

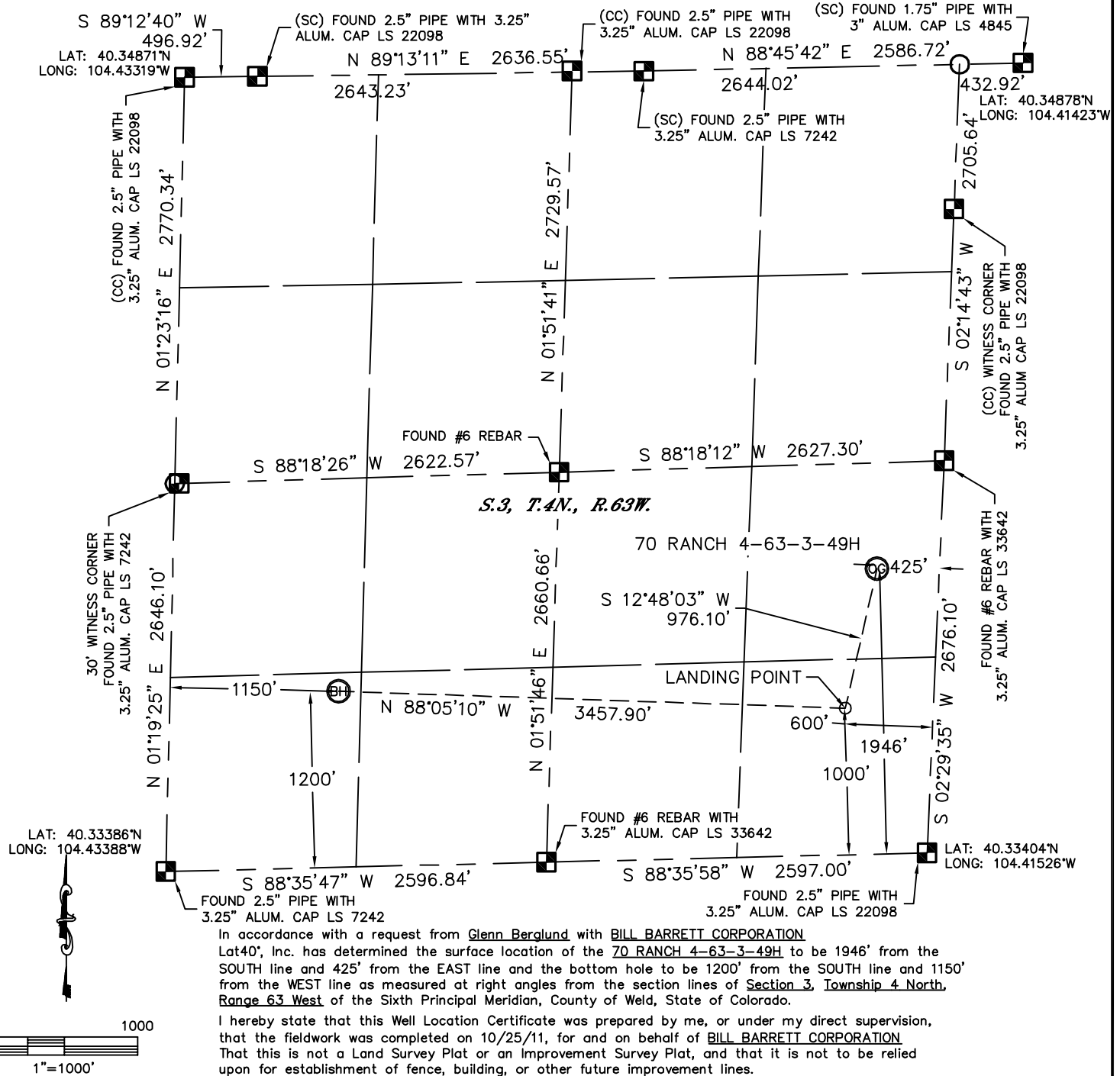


Lat40°, Inc. 1635 Foxtrail Drive, Suite 325 Loveland, CO 970-776-3321

# WELL LOCATION CERTIFICATE

SECTION: 3  
TOWNSHIP: 4N  
RANGE: 63W

THIS MAP DOES NOT REPRESENT A BOUNDARY SURVEY



## NOTE:

- 1) Bearings shown are Grid Bearings of the Colorado State Plane Coordinate System, North Zone, North American Datum 1983/2007. The lineal dimensions as contained herein are based upon the "U.S. Survey Foot."
- 2) Ground elevations are based on an observed GPS elevation (NAVD 1988 DATUM).
- 3) IMPROVEMENTS: See LOCATION DRAWING for all visible improvements within 400' of disturbed area.
- 4) SURFACE USE: RANGELAND
- 5) INSTRUMENT OPERATOR: ADAM KELLY

## NOTE

According to Colorado law, you must commence any legal action based upon any defect in this W.L.C. within three years after you discover such defect. In no event, may any action based upon any defect in this survey be commenced more than ten years after the date of the certificate shown hereon. (13-80-105 C.R.S.)

## LEGEND



= ALIQUOT MONUMENT AS DESCRIBED



= CALCULATED POSITION

## SURFACE LOCATION

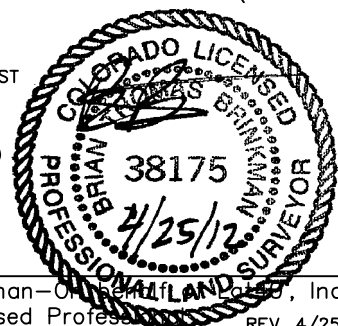
LAT: 40.33937°N (40°20'21.7"N)  
LONG: 104.41640°W (104°24'59.0"W)  
PDOP: 1.2  
ELEV: 4541'  
1/4, 1/4: NE1/4SE1/4  
NEAREST PROPERTY LINE: 425' EAST

## LANDING POINT

LAT: 40.33676°N (40°20'12.3"N)  
LONG: 104.41722°W (104°25'02.0"W)

## BOTTOM HOLE

LAT: 40.33719°N (40°20'13.9"N)  
LONG: 104.42960°W (104°25'46.6"W)



Brian T. Brinkman—Owner, Lat40°, Inc.

Colorado Licensed Professional  
Land Surveyor No. 38175

REV. 4/25/2012  
PROJECT#: 2011312

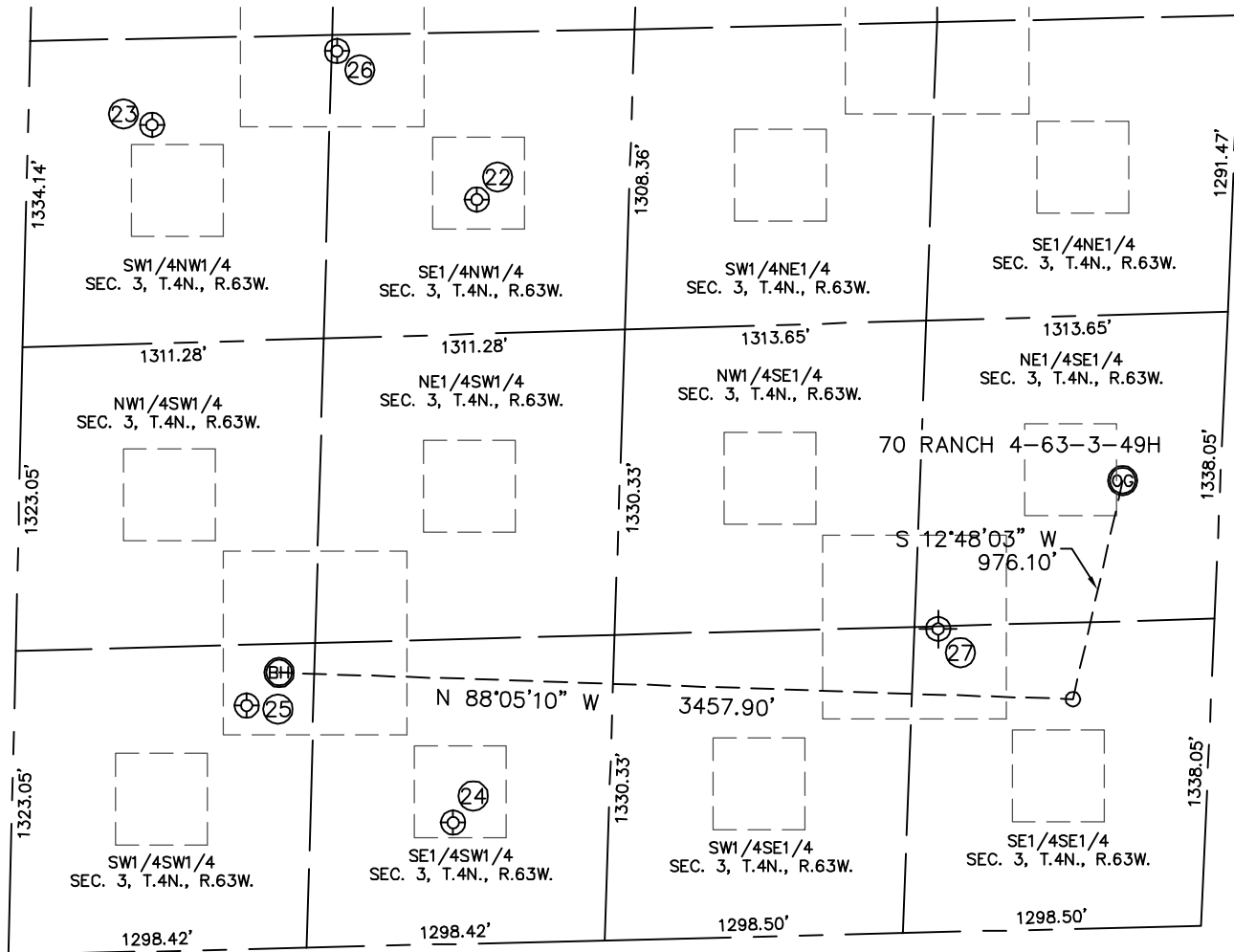


Lat40°, Inc. 1635 Foxtrail Drive, Suite 325 Loveland, CO 970-776-3321

## SITE SKETCH

70 RANCH 4-63-3-49H

SECTION: 3  
TOWNSHIP: 4N  
RANGE: 63W



- |                  |                  |                  |                  |                  |                          |
|------------------|------------------|------------------|------------------|------------------|--------------------------|
| ②②               | ②③               | ②④               | ②⑤               | ②⑥               | ②⑦                       |
| 70 RANCH 22-3    | NHF-LAURA 5-3    | CROISSANT 24-3   | CROISSANT 1      | 70 RANCH CNW-3   | RONALD #1-B              |
| SE1/4NW1/4       | SW1/4NW1/4       | SE1/4SW1/4       | SW1/4SW1/4       | SE1/4NW1/4       | SE1/4SE1/4               |
| 2152' FNL        | 1808' FNL        | 529' FSL         | 1060' FSL        | 1498' FNL        | 1320' FSL (COGCC)        |
| 1961' FWL        | 540' FWL         | 1922' FWL        | 1011' FWL        | 1337' FWL        | 1200' FEL (COGCC)        |
| LAT-40.34282°N   | LAT-40.34376°N   | LAT-40.33538°N   | LAT-40.33681°N   | LAT-40.34461°N   | LAT-40.33727°N (COGCC)   |
| LONG-104.42643°W | LONG-104.43149°W | LONG-104.42692°W | LONG-104.43012°W | LONG-104.42859°W | LONG-104.41899°W (COGCC) |
| PDOP: 1.2        | PDOP: 1.9        | PDOP: 1.3        | PDOP: 2.2        | PDOP: 2.1        | PDOP: N/A                |
| ELEV: 4530'      | ELEV: 4558'      | ELEV: 4567'      | ELEV: 4568'      | ELEV: 4529'      | ELEV: 4540' (COGCC)      |

