

T6N, R92W, 6th P.M.

QUICKSILVER RESOURCES, INC.

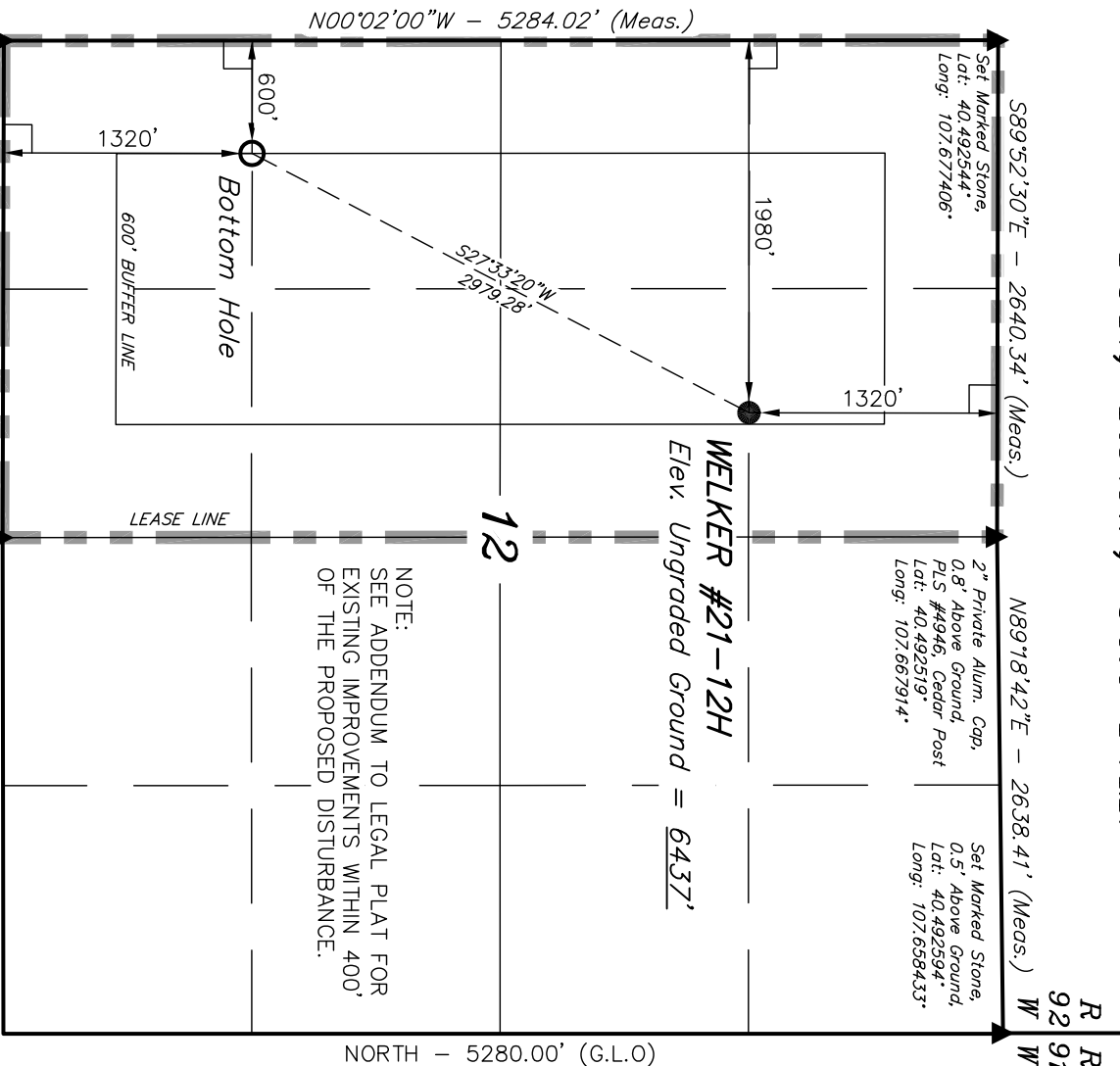
Well location, WELKER #21-12H, located as shown in the NE 1/4 NW 1/4 of Section 12, T6N, R92W, 6th P.M., Moffat County, Colorado.

BASIS OF ELEVATION

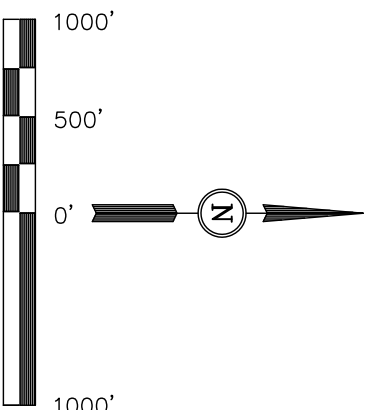
SPOT ELEVATION LOCATED AT THE NORTHEAST CORNER OF SECTION 10, T6N, R93W, 6th, P.M., TAKEN FROM THE HORSE GULCH QUADRANGLE, COLORADO, MOFFAT COUNTY, 7.5 MINUTE QUAD. (TOPOGRAPHIC MAP) PUBLISHED BY THE UNITED STATES DEPARTMENT OF THE INTERIOR, GEOLOGICAL SURVEY. SAID ELEVATION IS MARKED AS BEING 6246 FEET.

BASIS OF BEARINGS

BASIS OF BEARINGS IS A G.P.S. OBSERVATION.



NORTH - 5280.00' (G.L.O)



CERTIFICATE

THIS IS TO CERTIFY THAT THE ABOVE PLAT WAS PREPARED FROM FIELD NOTES OF ACTUAL SURVEYS MADE BY ME OR UNDER MY SUPERVISION AND THAT THE SAME ARE TRUE AND CORRECT TO THE BEST OF MY KNOWLEDGE AND BELIEF.

REGISTERED LAND SURVEYOR
REGISTRATION NO. 14922
STATE OF COLORADO
09-21-12

UINTAH ENGINEERING & LAND SURVEYING
85 SOUTH 200 EAST - VERNAL, UTAH 84078
(435) 789-1017

SCALE 1" = 1000'
DATE SURVEYED: 02-15-12
DATE DRAWN: 02-23-12

PARTY G.M. T.B. M.D.
REFERENCES G.L.O. PLAT

WEATHER COOL
FILE QUICKSILVER RESOURCES, INC

2012 UELS Alum. Cap,
0.2' Below Ground,
Lat: 40.478044°
Long: 107.677422°

1994 Private Alum. Cap,
1.0' Above Ground,
Lat: 40.478017°
Long: 107.667931°

PDOP = 1.3

LEGEND:

└ = 90° SYMBOL

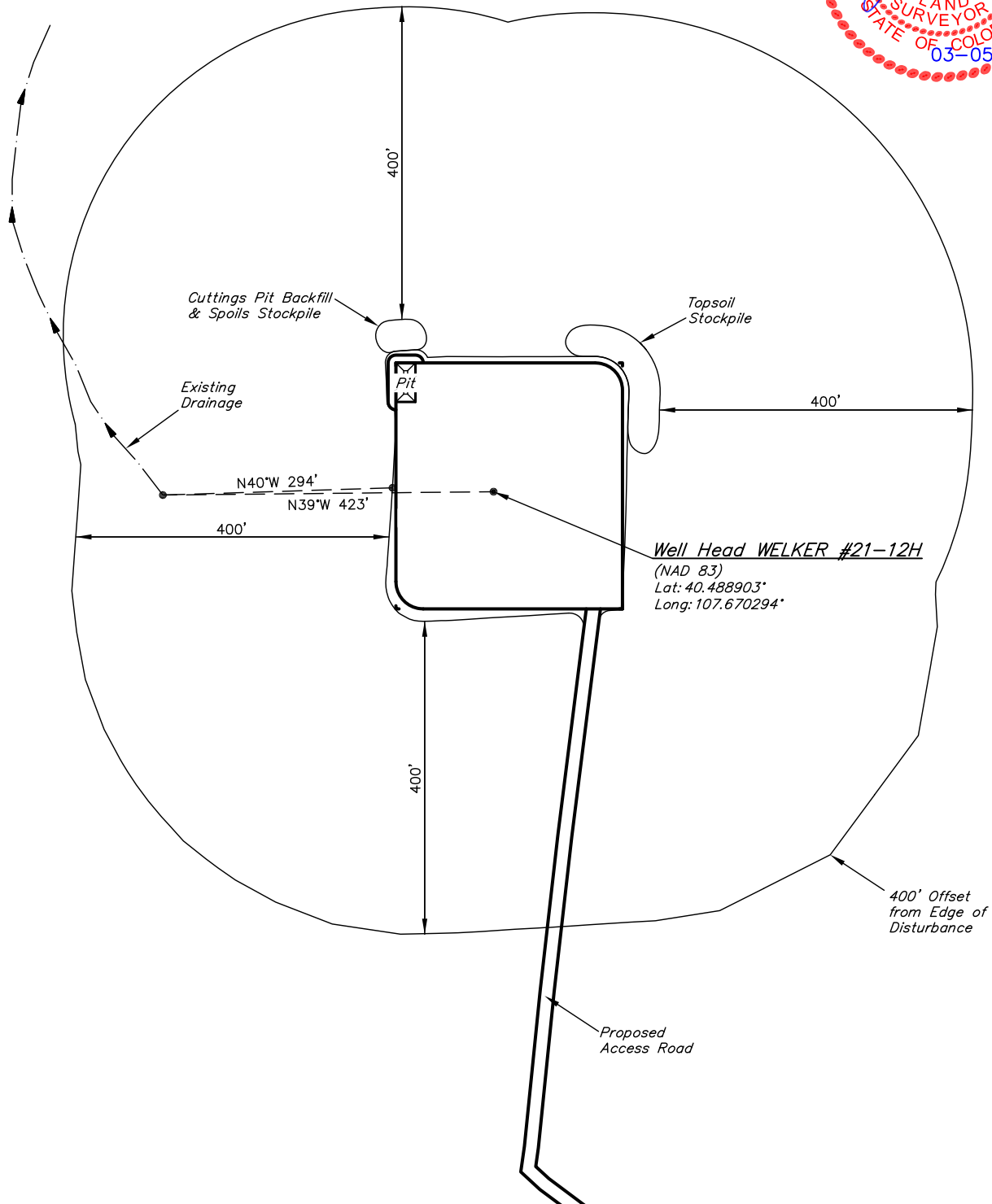
● = PROPOSED WELL HEAD.

▲ = SECTION CORNERS LOCATED.

NAD 83 (TARGET BOTTOM HOLE)		NAD 83 (SURFACE LOCATION)	
LATITUDE = 40°28'53.98" (40.481661)	LATITUDE = 40°29'20.05" (40.488903)	LATITUDE = 40°29'20.05" (40.488903)	LATITUDE = 40°29'20.05" (40.488903)
LONGITUDE = 107°40'30.94" (107.675261)	LONGITUDE = 107°40'13.06" (107.670294)	LONGITUDE = 107°40'13.06" (107.670294)	LONGITUDE = 107°40'13.06" (107.670294)
NAD 27 (TARGET BOTTOM HOLE)		NAD 27 (SURFACE LOCATION)	
LATITUDE = 40°28'54.08" (40.481689)	LATITUDE = 40°29'20.15" (40.488931)	LATITUDE = 40°29'20.15" (40.488931)	LATITUDE = 40°29'20.15" (40.488931)
LONGITUDE = 107°40'28.69" (107.674636)	LONGITUDE = 107°40'10.81" (107.669669)	LONGITUDE = 107°40'10.81" (107.669669)	LONGITUDE = 107°40'10.81" (107.669669)
STATE PLANE NAD 83		STATE PLANE NAD 83	
N: 1425731.00 E: 2394957.71	N: 1428334.53 E: 2396403.46	N: 1428334.53 E: 2396403.46	N: 1428334.53 E: 2396403.46
STATE PLANE NAD 27		STATE PLANE NAD 27	
N: 425729.94 E: 1395115.59	N: 428333.47 E: 1396561.33	N: 428333.47 E: 1396561.33	N: 428333.47 E: 1396561.33

DRAWN BY: M.D.

1320' FNL 1980' FWL



85 So. 200 East * Vernal, Utah 84078 * (435) 789-1017