

## The Road to Excellence Starts with Safety

|  |   |                         |                        |
|--|---|-------------------------|------------------------|
| Sold To #: 300721                                    | Ship To #: 2885878                                      | Quote #:                | Sales Order #: 9000066 |
| Customer: WILLIAMS PRODUCTION RMT INC - EBUS         | Customer Rep: Moore, Frank                              |                         |                        |
| Well Name: RWF                                       | Well #: 533-31  | API/UWI #: 05-045-19789 |                        |
| Field: Rulison                                       | City (SAP): RIFLE                                       | County/Parish: Garfield | State: Colorado        |
| Lat: N 39.475 deg. OR N 39 deg. 28 min. 31.044 secs. | Long: W 107.929 deg. OR W -108 deg. 4 min. 14.376 secs. |                         |                        |
| Contractor: NABORS                                   | Rig/Platform Name/Num: NABORS 573                       |                         |                        |
| Job Purpose: Cement Surface Casing                   |   |                         |                        |
| Well Type: Development Well                          | Job Type: Cement Surface Casing                         |                         |                        |
| Sales Person: KOHL, KYLE                             | Srv Supervisor: ARNOLD, EDWARD                          | MBU ID Emp #: 439784    |                        |

## Job Personnel

| HES Emp Name                   | Exp Hrs | Emp #  | HES Emp Name             | Exp Hrs | Emp #  | HES Emp Name   | Exp Hrs | Emp #  |
|--------------------------------|---------|--------|--------------------------|---------|--------|----------------|---------|--------|
| ARNOLD, EDWARD<br>John         | 7       | 439784 | BLUST, CHARLES<br>Thomas | 7       | 386662 | HYDE, DUSTIN C | 7       | 453940 |
| MILLER II,<br>MATTHEW Reginald | 7       | 425164 |                          |         |        |                |         |        |

## Equipment

| HES Unit # | Distance-1 way | HES Unit # | Distance-1 way | HES Unit # | Distance-1 way | HES Unit # | Distance-1 way |
|------------|----------------|------------|----------------|------------|----------------|------------|----------------|
| 10784080   | 60 mile        | 10804579   | 60 mile        | 11360871   | 60 mile        | 11542767   | 60 mile        |
| 11583933   | 60 mile        |            |                |            |                |            |                |

## Job Hours

| Date       | On Location Hours | Operating Hours | Date | On Location Hours | Operating Hours | Date | On Location Hours | Operating Hours |
|------------|-------------------|-----------------|------|-------------------|-----------------|------|-------------------|-----------------|
| 11.19.2011 | 7                 | 3               |      |                   |                 |      |                   |                 |

TOTAL Total is the sum of each column separately

## Job

## Job Times

| Formation Name         | Top      | Bottom            | Called Out    | Date            | Time  | Time Zone |
|------------------------|----------|-------------------|---------------|-----------------|-------|-----------|
| Formation Depth (MD)   |          |                   | On Location   | 19 - Nov - 2011 | 13:00 | MST       |
| Form Type              | BHST     |                   | Job Started   | 19 - Nov - 2011 | 14:20 | MST       |
| Job depth MD           | 1145. ft | Job Depth TVD     | Job Completed | 19 - Nov - 2011 | 21:17 | MST       |
| Water Depth            |          | Wk Ht Above Floor | Job Completed | 19 - Nov - 2011 | 22:27 | MST       |
| Perforation Depth (MD) | From     | To                | Departed Loc  | 19 - Nov - 2011 | 23:45 | MST       |

## Well Data

| Description    | New / Used | Max pressure psig | Size In | ID In | Weight lbm/ft | Thread | Grade | Top MD ft | Bottom MD ft | Top TVD ft | Bottom TVD ft |
|----------------|------------|-------------------|---------|-------|---------------|--------|-------|-----------|--------------|------------|---------------|
| Open Hole      |            |                   |         | 13.5  |               |        |       | .         | 1145.        |            |               |
| Surface Casing | Unknown    |                   | 9.625   | 9.001 | 32.3          |        | H-40  | .         | 1105.        |            |               |

Sales/Rental/3<sup>rd</sup> Party (HES)

| Description                              | Qty | Qty uom | Depth | Supplier |
|--|-----|---------|-------|----------|
| PLUG,CMTG,TOP,9 5/8,HWE,8.16 MIN/9.06 MA | 1   | EA      |       |          |

## Tools and Accessories

| Type         | Size | Qty | Make | Depth | Type        | Size | Qty | Make | Depth | Type           | Size  | Qty | Make |
|--------------|------|-----|------|-------|-------------|------|-----|------|-------|----------------|-------|-----|------|
| Guide Shoe   |      |     |      |       | Packer      |      |     |      |       | Top Plug       | 9.625 | 1   | HES  |
| Float Shoe   |      |     |      |       | Bridge Plug |      |     |      |       | Bottom Plug    |       |     |      |
| Float Collar |      |     |      |       | Retainer    |      |     |      |       | SSR plug set   |       |     |      |
| Insert Float |      |     |      |       |             |      |     |      |       | Plug Container | 9.625 | 1   | HES  |
| Stage Tool   |      |     |      |       |             |      |     |      |       | Centralizers   |       |     |      |

## Miscellaneous Materials

| Gelling Agt   | Conc | Surfactant | Conc | Acid Type | Qty  | Conc | % |
|---------------|------|------------|------|-----------|------|------|---|
| Treatment Fld | Conc | Inhibitor  | Conc | Sand Type | Size | Qty  |   |

## Fluid Data

Stage/Plug #: 1

**HALLIBURTON*****Cementing Job Summary***

| Fluid #                                  | Stage Type         | Fluid Name                    | Qty    | Qty uom                           | Mixing Density lbm/gal | Yield ft <sup>3</sup> /sk | Mix Fluid Gal/sk | Rate bbl/min | Total Mix Fluid Gal/sk |
|--|--------------------|-------------------------------|--------|-----------------------------------|------------------------|---------------------------|------------------|--------------|------------------------|
| 1  | Water Spacer       |                               | 20.00  | bbl                               | 8.34                   | .0                        | .0               | 4            |                        |
| 2  | Lead Cement        | VERSACEM (TM) SYSTEM (452010) | 160.0  | sacks                             | 12.3                   | 2.38                      | 13.75            | 6            | 13.75                  |
| 3  | Tail Cement        | VERSACEM (TM) SYSTEM (452010) | 160.0  | sacks                             | 12.79                  | 2.11                      | 11.75            | 6            | 11.75                  |
| 4  | Displacement Fluid |                               |        | bbl                               | 8.34                   | .0                        | .0               | 10           |                        |
| <b>Calculated Values</b>                 |                    | <b>Pressures</b>              |        | <b>Volumes</b>                    |                        |                           |                  |              |                        |
| Displacement                             | 86.5               | Shut In: Instant              |        | Lost Returns                      |                        | Cement Slurry             | 127.9            | Pad          |                        |
| Top Of Cement                            | SURFACE            | 5 Min                         |        | Cement Returns                    | 12                     | Actual Displacement       | 86.5             | Treatment    |                        |
| Frac Gradient                            |                    | 15 Min                        |        | Spacers                           | 20                     | Load and Breakdown        |                  | Total Job    | 234.4                  |
| <b>Rates</b>                             |                    |                               |        |                                   |                        |                           |                  |              |                        |
| Circulating                              | RIG                | Mixing                        | 6      | Displacement                      | 10                     | Avg. Job                  | 8                |              |                        |
| Cement Left In Pipe                      | Amount             | 43.2 ft                       | Reason | Shoe Joint                        |                        |                           |                  |              |                        |
| Frac Ring # 1 @                          | ID                 | Frac ring # 2 @               | ID     | Frac Ring # 3 @                   | ID                     | Frac Ring # 4 @           | ID               |              |                        |
| The Information Stated Herein Is Correct |                    |                               |        | Customer Representative Signature |                        |                           |                  |              |                        |

# HALLIBURTON

## Cementing Job Log

*The Road to Excellence Starts with Safety*

|  |                                   |   |                        |
|--|-----------------------------------|---|------------------------|
| Sold To #: 300721                                    | Ship To #: 2885878                | Quote #:  | Sales Order #: 9000066 |
| Customer: WILLIAMS PRODUCTION RMT INC - EBUS         | Customer Rep: Moore, Frank        |   |                        |
| Well Name: RWF                                       | Well #: 533-31                    | API/UWI #: 05-045-19789                                 |                        |
| Field: Rulison                                       | City (SAP): RIFLE                 | County/Parish: Garfield                                 | State: Colorado        |
| Legal Description:                                   |                                   |   |                        |
| Lat: N 39.475 deg. OR N 39 deg. 28 min. 31.044 secs. |                                   | Long: W 107.929 deg. OR W -108 deg. 4 min. 14.376 secs. |                        |
| Contractor: NABORS                                   | Rig/Platform Name/Num: NABORS 573 |   |                        |
| Job Purpose: Cement Surface Casing                   | Ticket Amount:                    |   |                        |
| Well Type: Development Well                          | Job Type: Cement Surface Casing   |   |                        |
| Sales Person: KOHL, KYLE                             | Srvc Supervisor: ARNOLD, EDWARD   | MBU ID Emp #: 439784                                    |                        |

| Activity Description                  | Date/Time        | Cht # | Rate bbl/min | Volume bbl |       | Pressure psig |        | Comments   |
|---------------------------------------|------------------|-------|--------------|------------|-------|---------------|--------|--|
|                                       |                  |       |              | Stage      | Total | Tubing        | Casing |  |
| Call Out                              | 11/19/2011 13:00 |       |              |            |       |               |        |  |
| Pre-Convoy Safety Meeting             | 11/19/2011 14:45 |       |              |            |       |               |        | Including entire cement crew.  |
| Crew Leave Yard                       | 11/19/2011 15:00 |       |              |            |       |               |        |  |
| Arrive At Loc                         | 11/19/2011 16:20 |       |              |            |       |               |        | Rig Rigging up casing crew.  |
| Assessment Of Location Safety Meeting | 11/19/2011 16:25 |       |              |            |       |               |        | Water; PH 7; KCL 250; So4 <200; Fe 0; Calcium 120; Chlorides 0; Temp 40; TDS 170.                            |
| Pre-Rig Up Safety Meeting             | 11/19/2011 20:30 |       |              |            |       |               |        | Including entire cement crew.  |
| Rig-Up Equipment                      | 11/19/2011 20:40 |       |              |            |       |               |        | 1 Elite # 1; 1 660 bulk truck; 1 hard line to floor; 2 lines to rig tank. 9.625" compact head.               |
| Rig-Up Completed                      | 11/19/2011 21:00 |       |              |            |       |               |        |  |
| Pre-Job Safety Meeting                | 11/19/2011 21:05 |       |              |            |       |               |        | Including everyone on location.  |
| Start Job                             | 11/19/2011 21:17 |       |              |            |       |               |        | TD 1145; TP 1105+38' landing joint; SJ 43.22; OH 13.5; Casing 9.625" 32.3# H-40; Mud 9.5 ppg.                |
| Pump Water                            | 11/19/2011 21:18 |       | 2            | 2          |       |               | 26.0   | Fill lines with fresh water.   |
| Test Lines                            | 11/19/2011 21:22 |       |              |            |       | 6000.0        |        | Good pressure test, no leaks. Pressure jumped while staging test. held pressure for 4 min and had good test. |
| Pump Spacer 1                         | 11/19/2011 21:26 |       | 4            | 20         |       |               | 105.0  | 20 BBL fresh water spacer.   |

Sold To #: 300721

Ship To #: 2885878

Quote #:

Sales Order #:

9000066

SUMMIT Version: 7.2.27

Wednesday, November 23, 2011 12:31:00

# HALLIBURTON

## Cementing Job Log

| Activity Description        | Date/Time        | Cht # | Rate bbl/min | Volume bbl |       | Pressure psig |        | Comments   |
|-----------------------------|------------------|-------|--------------|------------|-------|---------------|--------|--|
|                             |                  |       |              | Stage      | Total | Tubing        | Casing |  |
| Pump Lead Cement            | 11/19/2011 21:36 |       | 6            | 67.8       |       |               | 200.0  | 160 sks Lead Cement, 12.3 ppg, 2.38 cf3, 13.75 gal/sk. Had trouble getting water at 8 BBL/Min. Got problem fixed pumped rest of cement at 6 BBL/Min. |
| Pump Tail Cement            | 11/19/2011 21:48 |       | 6            | 60.1       |       |               | 215.0  | 160 sks Tail Cement, 12.8 ppg, 2.11 cf3, 11.75 gal/sk.   |
| Shutdown                    | 11/19/2011 21:58 |       |              |            |       |               |        |  |
| Drop Plug                   | 11/19/2011 22:00 |       |              |            |       |               |        | Plug left container. Suction pulled plug past plug indicator, had to pull cap to ensure plug left container.   |
| Pump Displacement           | 11/19/2011 22:01 |       | 10           | 76.5       |       |               | 550.0  | Fresh water displacement. 12 BBL good cement to surface.   |
| Slow Rate                   | 11/19/2011 22:20 |       | 2            | 10         |       |               | 250.0  | Slow rate 10 BBL's prior to bumping the plug.  |
| Bump Plug                   | 11/19/2011 22:25 |       |              |            | 86.5  |               | 775.0  | Bumped plug, took 500 PSI over.  |
| Check Floats                | 11/19/2011 22:26 |       |              |            |       |               |        | Floats held, 1 BBL back. No Derrick Charge. No Add Hours.  |
| End Job                     | 11/19/2011 22:27 |       |              |            |       |               |        |  |
| Pre-Rig Down Safety Meeting | 11/19/2011 22:30 |       |              |            |       |               |        | Including entire cement crew.  |
| Rig-Down Equipment          | 11/19/2011 22:35 |       |              |            |       |               |        |  |
| Rig-Down Completed          | 11/19/2011 23:30 |       |              |            |       |               |        |  |
| Pre-Convoy Safety Meeting   | 11/19/2011 23:35 |       |              |            |       |               |        | Including entire cement crew.  |
| Crew Leave Location         | 11/19/2011 23:45 |       |              |            |       |               |        | Crew leave location for Service Center or another location.  |
| Other                       | 11/19/2011 23:45 |       |              |            |       |               |        | Thank You for using Halliburton. Ed Arnold and Crew.   |

Sold To #: 300721

Ship To #: 2885878

Quote #:

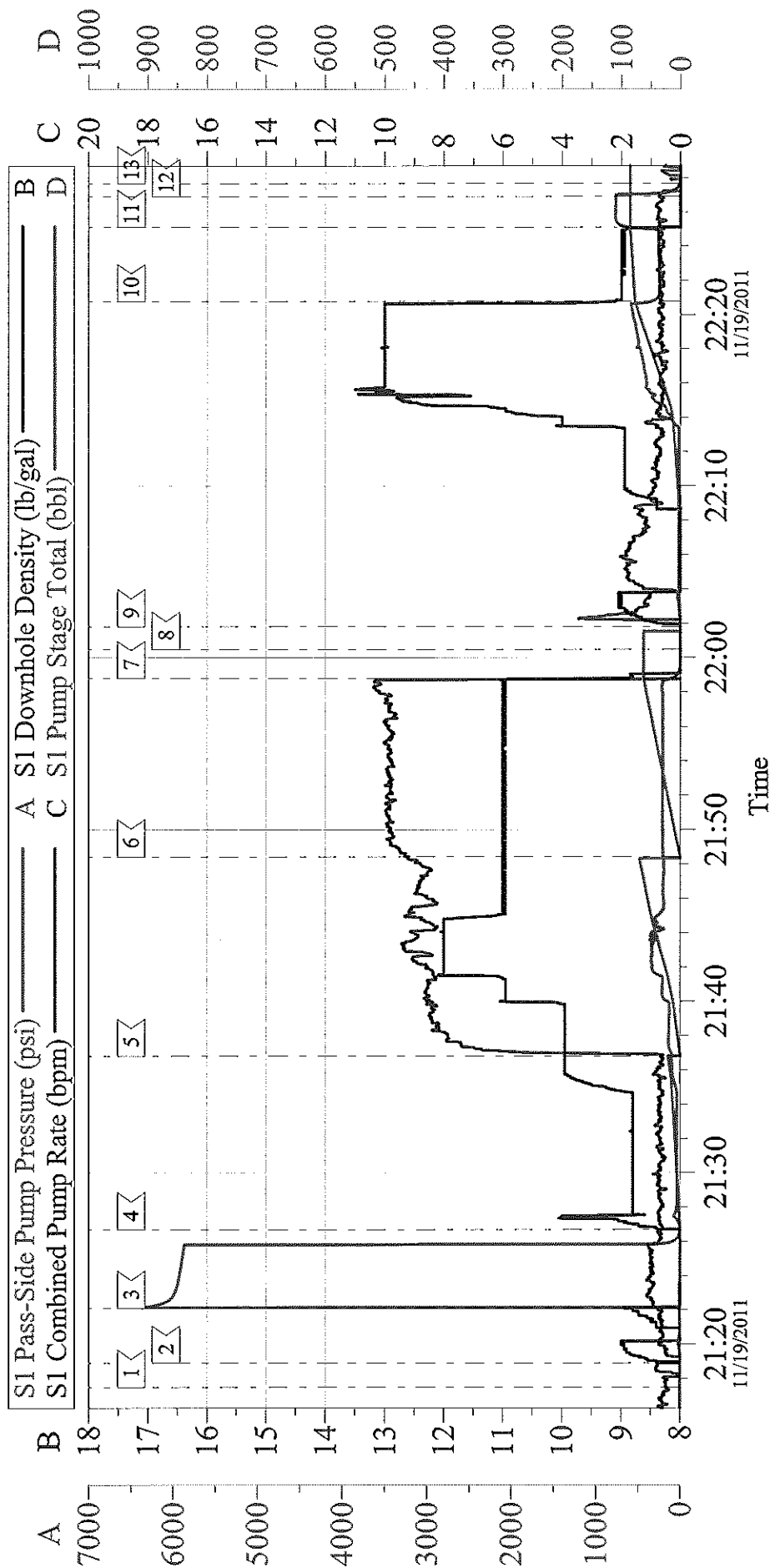
Sales Order #:

9000066

SUMMIT Version: 7.2.27

Wednesday, November 23, 2011 12:31:00

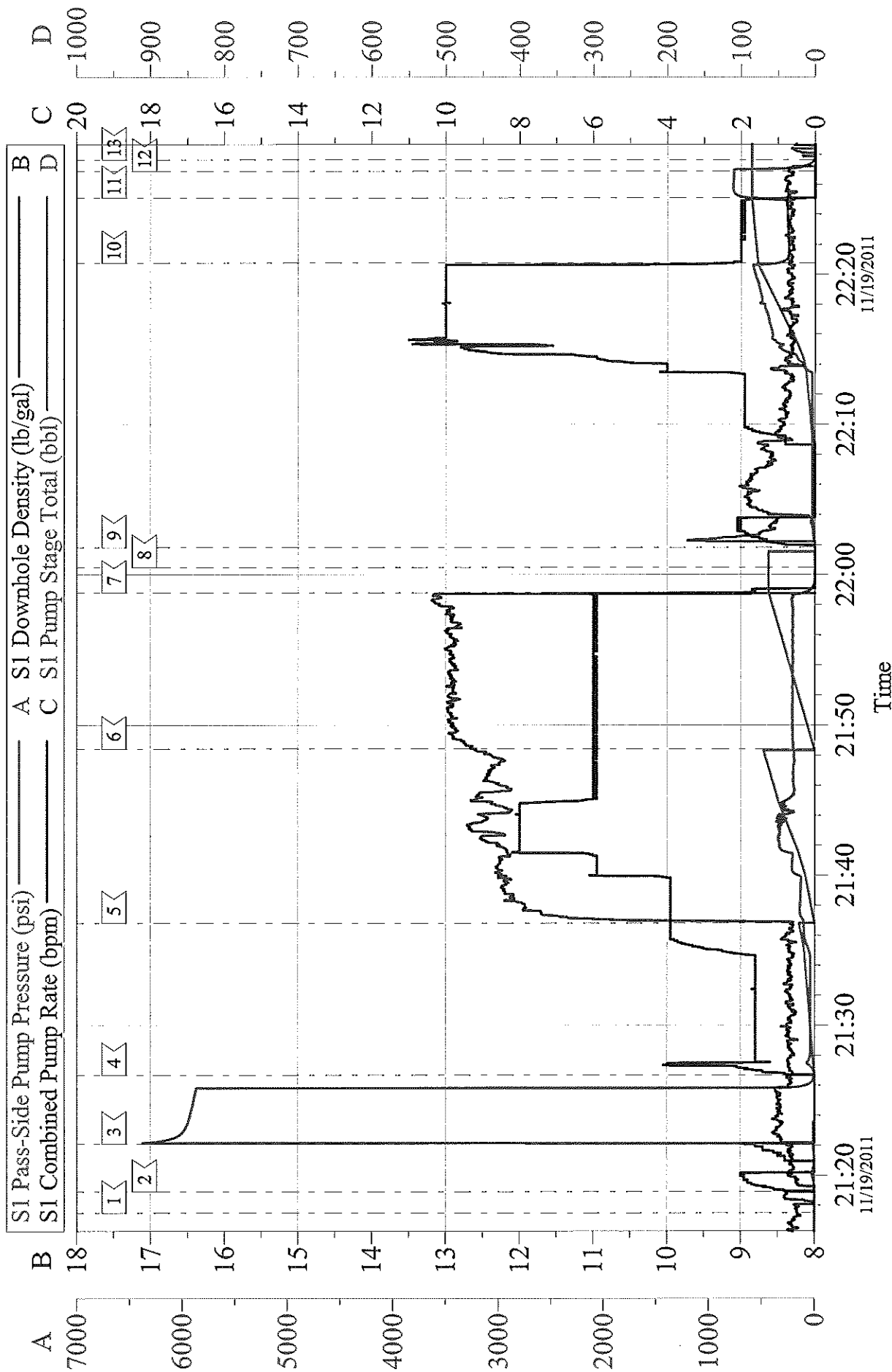
# WILLIAMS RWF 533-31 Surface 9.625"



| Local Event Log |            |          |    |                  |          |
|-----------------|------------|----------|----|------------------|----------|
| 1               | Start Job  | 21:17:30 | 2  | Fill Lines       | 21:18:54 |
| 4               | H2O Spacer | 21:26:42 | 5  | Lead Cement      | 21:36:49 |
| 7               | Shut Down  | 21:58:48 | 8  | Drop Plug        | 22:00:29 |
| 10              | Slow Rate  | 22:20:46 | 11 | Bump Plug        | 22:25:06 |
| 13              | End Job    | 22:27:39 | 12 | Check Floats     | 22:26:54 |
|                 |            |          | 3  | Test Lines       | 21:22:07 |
|                 |            |          | 6  | Tail Cement      | 21:48:25 |
|                 |            |          | 9  | H2O Displacement | 22:01:49 |

|                              |                              |                         |
|------------------------------|------------------------------|-------------------------|
| Customer: Williams           | Job Date: 19-Nov-2011        | Sales Order #: 9000066  |
| Well Description: RWF 533-31 | Job Type: Surface            | ADC Used: Yes           |
| Company Rep: Frank Morre     | Cement Supervisor: Ed Arnold | Elite #1: Reggie Miller |

# WILLIAMS RWF 533-31 Surface 9.625"



|                              |                              |                         |
|------------------------------|------------------------------|-------------------------|
| Customer: Williams           | Job Date: 19-Nov-2011        | Sales Order #: 9000066  |
| Well Description: RWF 533-31 | Job Type: Surface            | ADC Used: Yes           |
| Company Rep: Frank Morre     | Cement Supervisor: Ed Arnold | Elite #1: Reggie Miller |