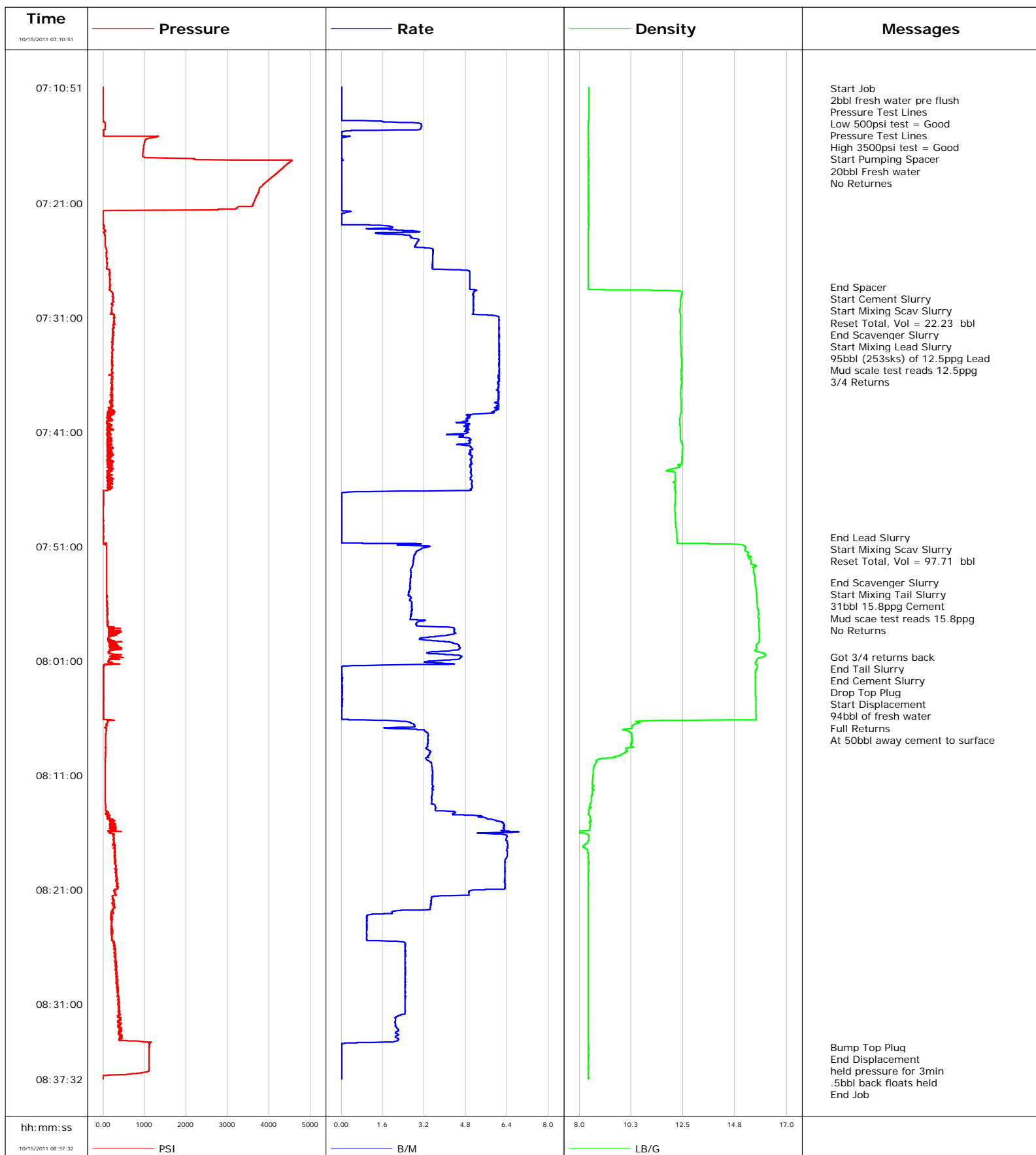


Well Federal 28-5
Field Mamm Creek
Engineer Dustin C Krueger
Country United States

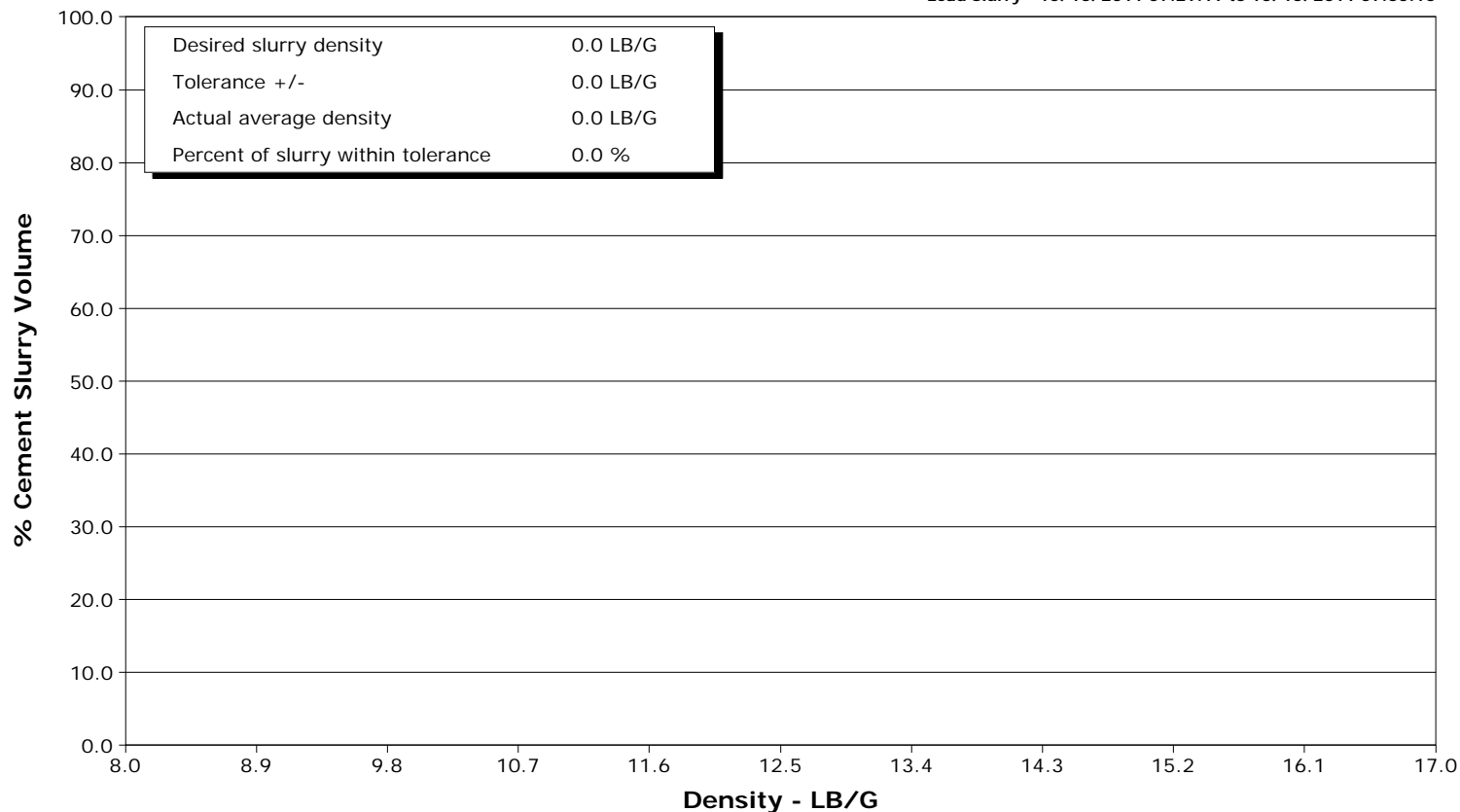
Client Encana Oil Gas
SIR No. 000649629
Job Type 9 5/8 Surface
Job Date 10-15-2011



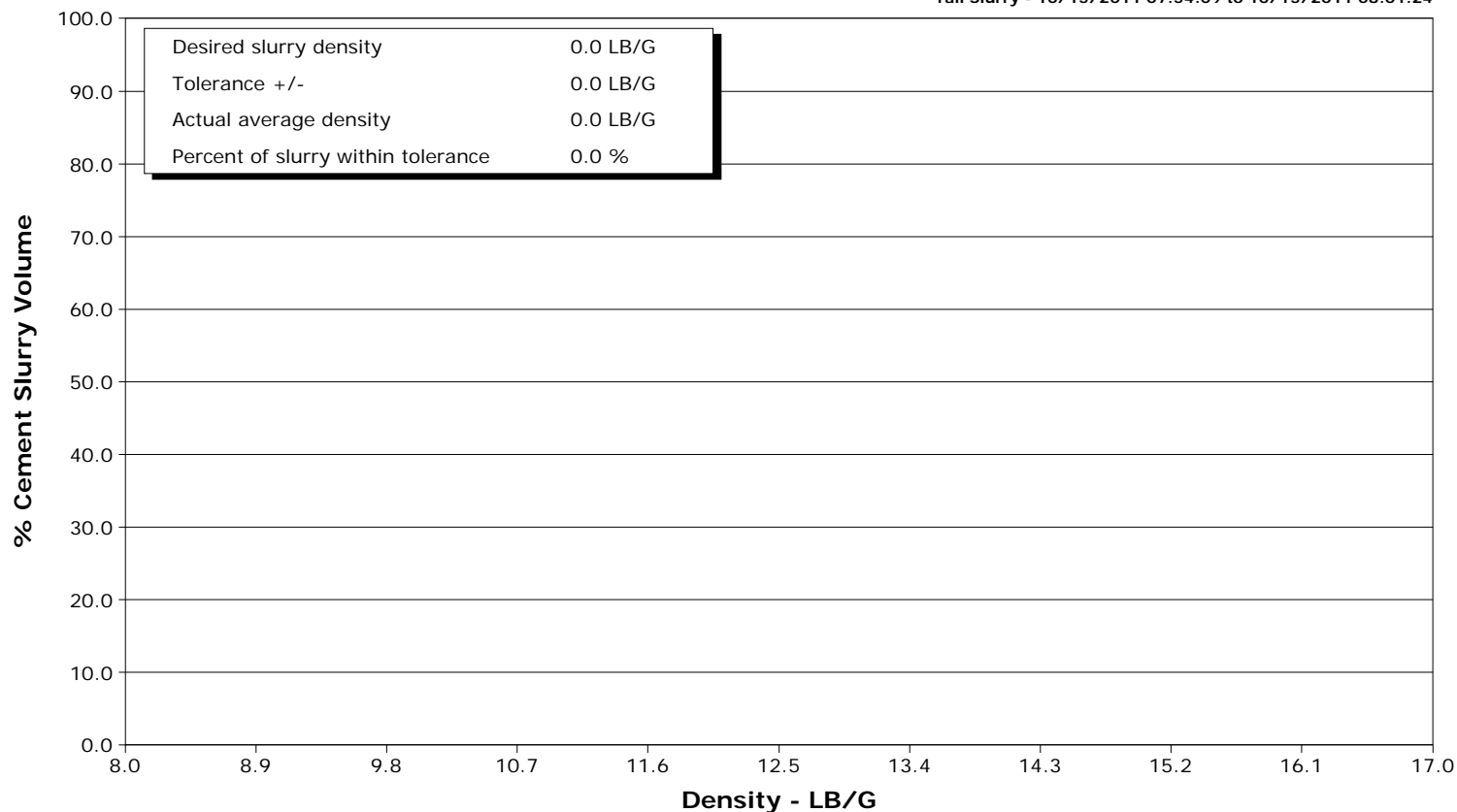
Well Federal 28-5
Field Mamm Creek
Engineer Dustin C Krueger
Country United States

Client Encana Oil Gas
SIR No. 000649629
Job Type 9 5/8 Surface
Job Date 10-15-2011

Lead Slurry - 10/15/2011 07:29:19 to 10/15/2011 07:50:10



Tail Slurry - 10/15/2011 07:54:09 to 10/15/2011 08:01:24



Cementing Service Report

				Customer Encana Oil & Gas			Job Number 000649629				
Well Federal 28-5 Federal 28-5			Location (legal) Nabors M-15			Schlumberger Location GRAND JUNCTION			Job Start Oct/15/2011		
Field Mamm Creek		Formation Name/Type Shale		Deviation 15 deg		Bit Size 12.3 in		Well MD 1263.0 ft		Well TVD 1263.0 ft	
County Garfield		State/Province Colorado		BHP psi		BHST 95 degF		BHCT 82 degF		Pore Press. Gradient lb/gal	
Well Master 063123623		API/UWI 05045202150000									
Rig Name NABORS M-15		Drilled For Gas		Service Via Land		Casing/Liner					
						Depth, ft		Size, in		Weight, lb/ft	
										Grade	
										Thread	
Offshore Zone		Well Class New		Well Type New Well Completion		40.0		16.0		65.0	
						1263.0		9.6		36.0	
										K-55	
										8RD	
Drilling Fluid Type Bentonite		Max. Density 8.90 lb/gal		Plastic Viscosity 20.000 cP		Tubing/Drill Pipe					
						T/D		Depth, ft		Size, in	
										Weight, lb/ft	
										Grade	
										Thread	
Service Line Cementing		Job Type 9 5/8 Surface									
Max. Allowed Tub. Press 3000 psi		Max. Allowed Ann. Press 500 psi		WH Connection Single Cement head		Perforations/Open Hole					
						Top, ft		Bottom, ft		shot/ft	
										No. of Shots	
										Total Interval ft	
										Diameter in	
						Treat Down Casing		Displacement 94.0 bbl		Packer Type	
										Packer Depth ft	
						Tubing Vol. bbl		Casing Vol. 97.6 bbl		Annular Vol. 74.0 bbl	
										Openhole Vol. 175.0 bbl	
Casing/Tubing Secured <input checked="" type="checkbox"/>		1 Hole Vol. Circulated prior to Cement <input checked="" type="checkbox"/>				Casing Tools			Squeeze Job		
Lift Pressure 296 psi						Shoe Type Guide			Squeeze Type		
Pipe Rotated <input type="checkbox"/>		Pipe Reciprocated <input type="checkbox"/>				Shoe Depth 1263.0 ft			Tool Type		
No. Centralizers		Top Plugs 1		Bottom Plugs 0		Stage Tool Type			Tool Depth ft		
Cement Head Type Single						Stage Tool Depth ft			Tail Pipe Size in		
Job Scheduled For Oct/15/2011 01:00		Arrived on Location Oct/15/2011 01:00		Leave Location Oct/15/2011 10:00		Collar Type Float			Tail Pipe Depth ft		
						Collar Depth 1216.0 ft			Sqz. Total Vol. bbl		
Date	Time 24-hr clock	Treating Pressure PSI	Flow Rate B/M	Density LB/G	Volume BBL	Message					
10/15/2011	07:10:51	-10	0.0	8.41	14.6	Started Acquisition					
10/15/2011	07:10:56	-10	0.0	8.41	14.6	Start Job					
10/15/2011	07:10:58	-10	0.0	8.41	14.6	2bbl fresh water pre flush					
10/15/2011	07:11:01	-10	0.0	8.41	14.6	Pressure Test Lines					
10/15/2011	07:11:02	-10	0.0	8.41	14.6	Low 500psi test = Good					
10/15/2011	07:11:04	-11	0.0	8.41	14.6	Pressure Test Lines					
10/15/2011	07:11:06	-10	0.0	8.41	14.6	High 3500psi test = Good					
10/15/2011	07:11:49	-10	0.0	8.41	14.6	Start Pumping Spacer					
10/15/2011	07:11:51	-10	0.0	8.41	14.6	20bbl Fresh water					
10/15/2011	07:13:21	-10	0.0	8.41	0.0						
10/15/2011	07:15:51	993	0.0	8.41	2.4						
10/15/2011	07:18:21	4195	0.0	8.41	2.4						
10/15/2011	07:20:51	3647	0.0	8.41	2.4						
10/15/2011	07:23:21	45	2.2	8.40	3.2						
10/15/2011	07:25:51	99	3.5	8.40	10.7						
10/15/2011	07:28:19	171	5.0	8.41	21.6	End Spacer					
10/15/2011	07:28:20	168	5.0	8.41	21.7	Start Cement Slurry					
10/15/2011	07:28:21	168	5.0	8.41	21.7						
10/15/2011	07:28:26	155	5.0	8.41	22.1	Reset Total, Vol = 22.23 bbl					
10/15/2011	07:29:19	240	5.1	12.41	26.7	End Scavenger Slurry					
10/15/2011	07:29:24	245	5.1	12.40	27.1	95bbl (253sks) of 12.5ppg Lead					

Well Federal 28-5 Federal 28-5			Field Mamm Creek		Job Start Oct/15/2011	Customer Encana Oil & Gas		Job Number 000649629
Date	Time 24-hr clock	Treating Pressure PSI	Flow Rate B/M	Density LB/G	Volume BBL	Message		
10/15/2011	07:33:21	221	6.1	12.41	49.8			
10/15/2011	07:35:51	222	6.1	12.42	65.0			
10/15/2011	07:38:21	161	6.1	12.42	80.2			
10/15/2011	07:40:51	132	4.9	12.37	93.5			
10/15/2011	07:43:21	105	5.0	12.46	105.7			
10/15/2011	07:45:51	107	5.0	12.15	118.3			
10/15/2011	07:48:21	-0	0.0	12.16	119.9			
10/15/2011	07:50:10	1	0.0	12.24	119.9	End Lead Slurry		
10/15/2011	07:50:12	1	0.0	12.24	119.9	Start Mixing Scav Slurry		
10/15/2011	07:50:22	2	0.0	12.25	119.9	Reset Total, Vol = 97.71 bbl		
10/15/2011	07:50:51	51	2.2	15.10	120.3			
10/15/2011	07:53:21	92	2.7	15.57	127.4			
10/15/2011	07:54:08	91	2.7	15.63	129.5	End Scavenger Slurry		
10/15/2011	07:54:09	91	2.7	15.63	129.5	Start Mixing Tail Slurry		
10/15/2011	07:54:11	91	2.7	15.64	129.6	31bbl 15.8ppg Cement		
10/15/2011	07:54:12	90	2.7	15.64	129.6	Mud scae test reads 15.8ppg		
10/15/2011	07:55:51	98	2.7	15.70	134.0			
10/15/2011	08:00:38	187	4.7	16.02	150.8	Got 3/4 returns back		
10/15/2011	08:00:51	400	4.5	15.71	151.8			
10/15/2011	08:01:24	18	0.9	15.72	153.8	End Tail Slurry		
10/15/2011	08:01:25	18	0.4	15.72	153.8	End Cement Slurry		
10/15/2011	08:01:28	16	0.1	15.72	153.8	Drop Top Plug		
10/15/2011	08:01:29	16	0.1	15.72	153.8	Start Displacement		
10/15/2011	08:01:31	12	0.0	15.71	153.8	94bbl of fresh water		
10/15/2011	08:01:32	12	0.0	15.72	153.8	At 50bbl away cement to surface		
10/15/2011	08:03:21	7	0.0	15.65	153.8			
10/15/2011	08:05:51	4	0.0	15.67	153.9			
10/15/2011	08:08:21	64	3.3	10.25	160.4			
10/15/2011	08:10:51	54	3.5	8.60	169.0			
10/15/2011	08:13:21	57	3.5	8.51	177.8			
10/15/2011	08:15:51	161	6.2	8.46	190.3			
10/15/2011	08:18:21	276	6.3	8.40	206.2			
10/15/2011	08:20:51	351	6.3	8.40	222.0			
10/15/2011	08:23:21	189	1.0	8.40	230.9			
10/15/2011	08:25:51	255	2.5	8.40	233.9			
10/15/2011	08:28:21	302	2.5	8.40	240.0			
10/15/2011	08:30:51	393	2.5	8.40	246.2			
10/15/2011	08:33:21	377	2.2	8.41	251.9			
10/15/2011	08:34:44	1118	0.0	8.41	254.1	Bump Top Plug		
10/15/2011	08:34:45	1120	0.0	8.41	254.1	End Displacement		
10/15/2011	08:34:49	1119	0.0	8.41	254.1	held pressure for 3min		
10/15/2011	08:35:51	1116	0.0	8.41	254.1			

Well Federal 28-5 Federal 28-5	Field Mamm Creek	Job Start Oct/15/2011	Customer Encana Oil & Gas	Job Number 000649629
--	----------------------------	---------------------------------	-------------------------------------	--------------------------------

Post Job Summary

Average Pump Rates, bbl/min					Volume of Fluid Injected, bbl						
Slurry 3.7	N2		Mud	Maximum Rate 6.9	Total Slurry 126.0	Mud 0.0		Spacer 20.0	N2		
Treating Pressure Summary, psi					Breakdown Fluid						
Maximum 3500	Final -10	Average 430	Bump Plug to 1150	Breakdown	Type FreshWater		Volume 283.0 bbl		Density 8.34 lb/gal		
Avg. N2 Percent %		Designed Slurry Volume 126.0 bbl		Displacement 94.0 bbl		Mix Water Temp 70 degF		Cement Circulated to Surface?	<input checked="" type="checkbox"/>	Volume 44.0 bbl	
								Washed Thru Perfs		<input type="checkbox"/>	To ft
Customer or Authorized Representative Erasmo Purras				Schlumberger Supervisor Dustin C Krueger				Circulation Lost	<input type="checkbox"/>	Job Completed	<input checked="" type="checkbox"/>
								-		-	