

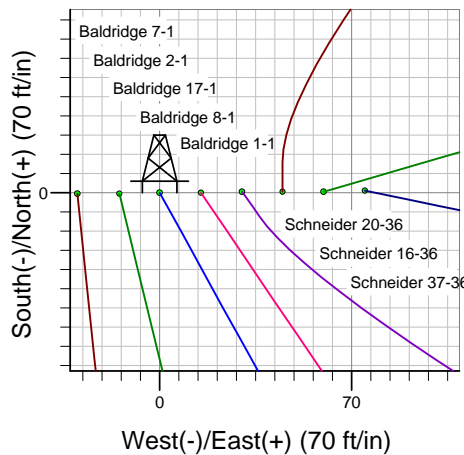
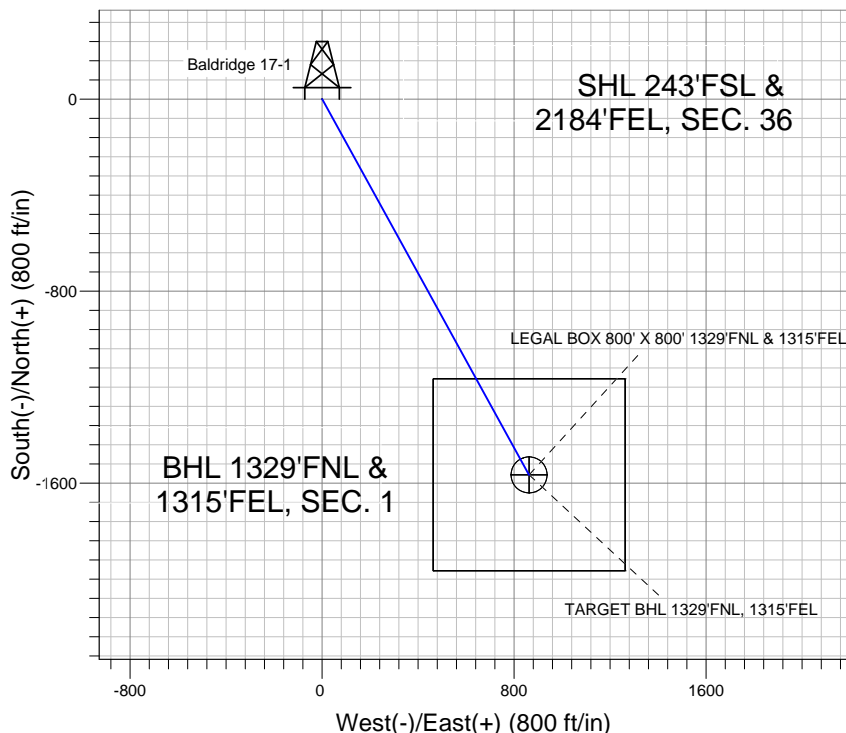
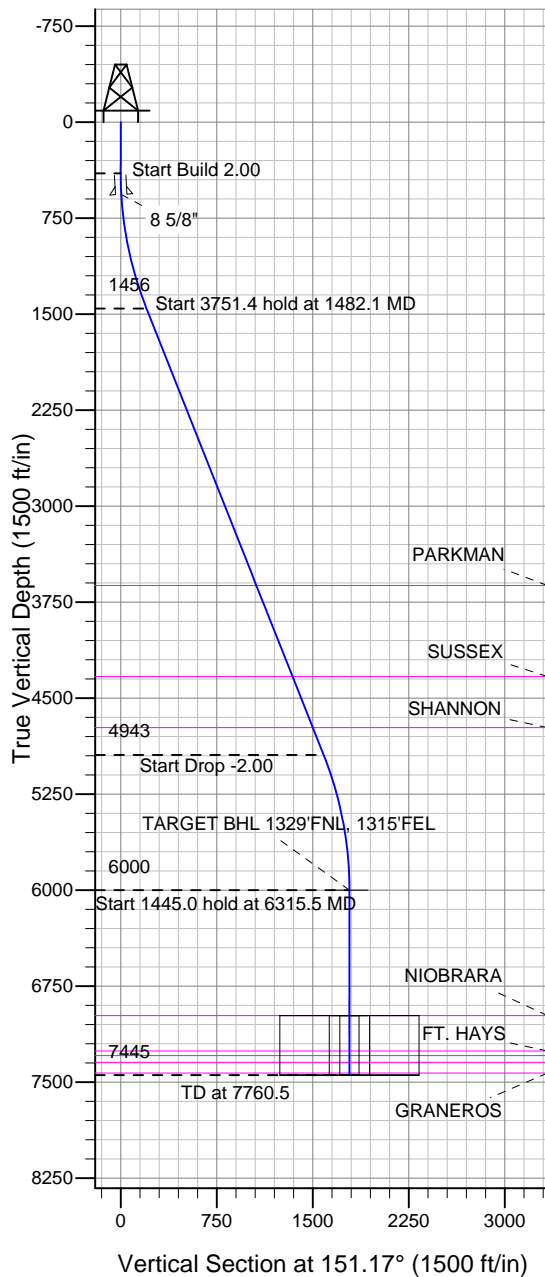
Well Name: Baldridge 17-1

Surface Location: Baldridge & Schneider Pad Sec.36-T7N-R67W
 North American Datum 1983 , US State Plane 1983 , Colorado Northern Zone
 Ground Elevation: 4877.0

+N/-S	+E/-W	Northing	Easting	Latitude	Longitude	Slot
0.0	0.0	1434452.58	3183460.86	40.524099	-104.840064	

Original Well Elev WELL @ 4893.0ft (Original Well Elev)

BAYSWATER EXPLORATION & PRODUCTION



Baldridge & Schneider Pad Sec.36-T7N-R67W
 Baldridge 17-1
 Plan #1 (4-12-12)
 9:38, April 20 2012



Azimuths to True North
 Magnetic North: 8.80°
 Magnetic Field
 Strength: 53100.7snT
 Dip Angle: 67.11°
 Date: 4/12/2012
 Model: IGRF2010

WELLBORE TARGET DETAILS (LAT/LONG)

Name	TVD	+N/-S	+E/-W	Latitude	Longitude	Shape
TARGET BHL 1329'FNL, 1315'FEL	6000.0	-1565.8	861.9	40.519801	-104.836964	Point
LEGAL BOX 800' X 800' 1329'FNL & 1315'FEL	6981.0	-1565.8	861.9	40.519801	-104.836964	Rectangle (Sides: L800.0 W800.0)
TARGET CIRCLE 1329'FNL & 1315'FEL	6981.0	-1565.8	861.9	40.519801	-104.836964	Circle (Radius: 75.0)

SECTION DETAILS

Sec	MD	Inc	Azi	TVD	+N/-S	+E/-W	DLeg	TFace	VSec	Target
1	0.0	0.00	0.00	0.0	0.0	0.0	0.00	0.00	0.0	
2	400.0	0.00	0.00	400.0	0.0	0.0	0.00	0.00	0.0	
3	1482.1	21.64	151.17	1456.5	-176.9	97.4	2.00	151.17	201.9	
4	5233.5	21.64	151.17	4943.5	-1388.9	764.5	0.00	0.00	1585.4	
5	6315.5	0.00	0.00	6000.0	-1565.8	861.9	2.00	180.00	1787.3	TARGET BHL 1329'FNL, 1315'FEL
6	7760.5	0.00	0.00	7445.0	-1565.8	861.9	0.00	0.00	1787.3	



BAYSWATER EXPLORATION & PRODUCTION

SEC.36-T7N-R67W

Baldrige & Schneider Pad Sec.36-T7N-R67W

Baldrige 17-1

Wellbore #1

Plan: Plan #1 (4-12-12)

Standard Planning Report

20 April, 2012

Measured Depth (ft)	Inclination (°)	Azimuth (°)	Vertical Depth (ft)	+N/-S (ft)	+E/-W (ft)	Dogleg Rate (°/100ft)	Build Rate (°/100ft)	Turn Rate (°/100ft)	TFO (°)	Target
0.0	0.00	0.00	0.0	0.0	0.0	0.00	0.00	0.00	0.00	
400.0	0.00	0.00	400.0	0.0	0.0	0.00	0.00	0.00	0.00	
1,482.1	21.64	151.17	1,456.5	-176.9	97.4	2.00	2.00	0.00	151.17	
5,233.5	21.64	151.17	4,943.5	-1,388.9	764.5	0.00	0.00	0.00	0.00	
6,315.5	0.00	0.00	6,000.0	-1,565.8	861.9	2.00	-2.00	0.00	180.00	TARGET BHL 1329
7,760.5	0.00	0.00	7,445.0	-1,565.8	861.9	0.00	0.00	0.00	0.00	

Database:	Landmark	Local Co-ordinate Reference:	Well Baldridge 17-1
Company:	BAYSWATER EXPLORATION & PRODUCTION	TVD Reference:	WELL @ 4893.0ft (Original Well Elev)
Project:	SEC.36-T7N-R67W	MD Reference:	WELL @ 4893.0ft (Original Well Elev)
Site:	Baldridge & Schneider Pad Sec.36-T7N-R67W	North Reference:	True
Well:	Baldridge 17-1	Survey Calculation Method:	Minimum Curvature
Wellbore:	Wellbore #1		
Design:	Plan #1 (4-12-12)		

Planned Survey									
Measured Depth (ft)	Inclination (°)	Azimuth (°)	Vertical Depth (ft)	+N/-S (ft)	+E/-W (ft)	Vertical Section (ft)	Dogleg Rate (°/100ft)	Build Rate (°/100ft)	Turn Rate (°/100ft)
0.0	0.00	0.00	0.0	0.0	0.0	0.0	0.00	0.00	0.00
40.0	0.00	0.00	40.0	0.0	0.0	0.0	0.00	0.00	0.00
80.0	0.00	0.00	80.0	0.0	0.0	0.0	0.00	0.00	0.00
120.0	0.00	0.00	120.0	0.0	0.0	0.0	0.00	0.00	0.00
160.0	0.00	0.00	160.0	0.0	0.0	0.0	0.00	0.00	0.00
200.0	0.00	0.00	200.0	0.0	0.0	0.0	0.00	0.00	0.00
240.0	0.00	0.00	240.0	0.0	0.0	0.0	0.00	0.00	0.00
280.0	0.00	0.00	280.0	0.0	0.0	0.0	0.00	0.00	0.00
320.0	0.00	0.00	320.0	0.0	0.0	0.0	0.00	0.00	0.00
360.0	0.00	0.00	360.0	0.0	0.0	0.0	0.00	0.00	0.00
400.0	0.00	0.00	400.0	0.0	0.0	0.0	0.00	0.00	0.00
440.0	0.80	151.17	440.0	-0.2	0.1	0.3	2.00	2.00	0.00
480.0	1.60	151.17	480.0	-1.0	0.5	1.1	2.00	2.00	0.00
520.0	2.40	151.17	520.0	-2.2	1.2	2.5	2.00	2.00	0.00
560.0	3.20	151.17	559.9	-3.9	2.2	4.5	2.00	2.00	0.00
565.1	3.30	151.17	565.0	-4.2	2.3	4.8	2.00	2.00	0.00
8 5/8"									
600.0	4.00	151.17	599.8	-6.1	3.4	7.0	2.00	2.00	0.00
640.0	4.80	151.17	639.7	-8.8	4.8	10.0	2.00	2.00	0.00
680.0	5.60	151.17	679.6	-12.0	6.6	13.7	2.00	2.00	0.00
720.0	6.40	151.17	719.3	-15.6	8.6	17.9	2.00	2.00	0.00
760.0	7.20	151.17	759.1	-19.8	10.9	22.6	2.00	2.00	0.00
800.0	8.00	151.17	798.7	-24.4	13.4	27.9	2.00	2.00	0.00
840.0	8.80	151.17	838.3	-29.5	16.3	33.7	2.00	2.00	0.00
880.0	9.60	151.17	877.8	-35.1	19.3	40.1	2.00	2.00	0.00
920.0	10.40	151.17	917.1	-41.2	22.7	47.1	2.00	2.00	0.00
960.0	11.20	151.17	956.4	-47.8	26.3	54.6	2.00	2.00	0.00
1,000.0	12.00	151.17	995.6	-54.8	30.2	62.6	2.00	2.00	0.00
1,040.0	12.80	151.17	1,034.7	-62.4	34.3	71.2	2.00	2.00	0.00
1,080.0	13.60	151.17	1,073.6	-70.4	38.7	80.3	2.00	2.00	0.00
1,120.0	14.40	151.17	1,112.4	-78.8	43.4	90.0	2.00	2.00	0.00
1,160.0	15.20	151.17	1,151.1	-87.8	48.3	100.2	2.00	2.00	0.00
1,200.0	16.00	151.17	1,189.6	-97.2	53.5	111.0	2.00	2.00	0.00
1,240.0	16.80	151.17	1,228.0	-107.1	59.0	122.3	2.00	2.00	0.00
1,280.0	17.60	151.17	1,266.2	-117.5	64.7	134.1	2.00	2.00	0.00
1,320.0	18.40	151.17	1,304.3	-128.3	70.6	146.5	2.00	2.00	0.00
1,360.0	19.20	151.17	1,342.1	-139.6	76.8	159.3	2.00	2.00	0.00
1,400.0	20.00	151.17	1,379.8	-151.4	83.3	172.8	2.00	2.00	0.00
1,440.0	20.80	151.17	1,417.3	-163.6	90.0	186.7	2.00	2.00	0.00
1,480.0	21.60	151.17	1,454.6	-176.2	97.0	201.2	2.00	2.00	0.00
1,482.1	21.64	151.17	1,456.5	-176.9	97.4	201.9	2.00	2.00	0.00
1,520.0	21.64	151.17	1,491.8	-189.2	104.1	215.9	0.00	0.00	0.00
1,560.0	21.64	151.17	1,529.0	-202.1	111.2	230.7	0.00	0.00	0.00
1,600.0	21.64	151.17	1,566.1	-215.0	118.3	245.4	0.00	0.00	0.00
1,640.0	21.64	151.17	1,603.3	-227.9	125.5	260.2	0.00	0.00	0.00
1,680.0	21.64	151.17	1,640.5	-240.9	132.6	274.9	0.00	0.00	0.00
1,720.0	21.64	151.17	1,677.7	-253.8	139.7	289.7	0.00	0.00	0.00
1,760.0	21.64	151.17	1,714.9	-266.7	146.8	304.4	0.00	0.00	0.00
1,800.0	21.64	151.17	1,752.0	-279.6	153.9	319.2	0.00	0.00	0.00
1,840.0	21.64	151.17	1,789.2	-292.5	161.0	333.9	0.00	0.00	0.00
1,880.0	21.64	151.17	1,826.4	-305.5	168.1	348.7	0.00	0.00	0.00
1,920.0	21.64	151.17	1,863.6	-318.4	175.3	363.4	0.00	0.00	0.00

Database:	Landmark	Local Co-ordinate Reference:	Well Baldridge 17-1
Company:	BAYSWATER EXPLORATION & PRODUCTION	TVD Reference:	WELL @ 4893.0ft (Original Well Elev)
Project:	SEC.36-T7N-R67W	MD Reference:	WELL @ 4893.0ft (Original Well Elev)
Site:	Baldridge & Schneider Pad Sec.36-T7N-R67W	North Reference:	True
Well:	Baldridge 17-1	Survey Calculation Method:	Minimum Curvature
Wellbore:	Wellbore #1		
Design:	Plan #1 (4-12-12)		

Planned Survey									
Measured Depth (ft)	Inclination (°)	Azimuth (°)	Vertical Depth (ft)	+N/-S (ft)	+E/-W (ft)	Vertical Section (ft)	Dogleg Rate (°/100ft)	Build Rate (°/100ft)	Turn Rate (°/100ft)
1,960.0	21.64	151.17	1,900.8	-331.3	182.4	378.2	0.00	0.00	0.00
2,000.0	21.64	151.17	1,937.9	-344.2	189.5	392.9	0.00	0.00	0.00
2,040.0	21.64	151.17	1,975.1	-357.2	196.6	407.7	0.00	0.00	0.00
2,080.0	21.64	151.17	2,012.3	-370.1	203.7	422.4	0.00	0.00	0.00
2,120.0	21.64	151.17	2,049.5	-383.0	210.8	437.2	0.00	0.00	0.00
2,160.0	21.64	151.17	2,086.7	-395.9	217.9	452.0	0.00	0.00	0.00
2,200.0	21.64	151.17	2,123.8	-408.9	225.1	466.7	0.00	0.00	0.00
2,240.0	21.64	151.17	2,161.0	-421.8	232.2	481.5	0.00	0.00	0.00
2,280.0	21.64	151.17	2,198.2	-434.7	239.3	496.2	0.00	0.00	0.00
2,320.0	21.64	151.17	2,235.4	-447.6	246.4	511.0	0.00	0.00	0.00
2,360.0	21.64	151.17	2,272.6	-460.5	253.5	525.7	0.00	0.00	0.00
2,400.0	21.64	151.17	2,309.8	-473.5	260.6	540.5	0.00	0.00	0.00
2,440.0	21.64	151.17	2,346.9	-486.4	267.7	555.2	0.00	0.00	0.00
2,480.0	21.64	151.17	2,384.1	-499.3	274.8	570.0	0.00	0.00	0.00
2,520.0	21.64	151.17	2,421.3	-512.2	282.0	584.7	0.00	0.00	0.00
2,560.0	21.64	151.17	2,458.5	-525.2	289.1	599.5	0.00	0.00	0.00
2,600.0	21.64	151.17	2,495.7	-538.1	296.2	614.2	0.00	0.00	0.00
2,640.0	21.64	151.17	2,532.8	-551.0	303.3	629.0	0.00	0.00	0.00
2,680.0	21.64	151.17	2,570.0	-563.9	310.4	643.7	0.00	0.00	0.00
2,720.0	21.64	151.17	2,607.2	-576.9	317.5	658.5	0.00	0.00	0.00
2,760.0	21.64	151.17	2,644.4	-589.8	324.6	673.2	0.00	0.00	0.00
2,800.0	21.64	151.17	2,681.6	-602.7	331.8	688.0	0.00	0.00	0.00
2,840.0	21.64	151.17	2,718.7	-615.6	338.9	702.7	0.00	0.00	0.00
2,880.0	21.64	151.17	2,755.9	-628.5	346.0	717.5	0.00	0.00	0.00
2,920.0	21.64	151.17	2,793.1	-641.5	353.1	732.2	0.00	0.00	0.00
2,960.0	21.64	151.17	2,830.3	-654.4	360.2	747.0	0.00	0.00	0.00
3,000.0	21.64	151.17	2,867.5	-667.3	367.3	761.7	0.00	0.00	0.00
3,040.0	21.64	151.17	2,904.6	-680.2	374.4	776.5	0.00	0.00	0.00
3,080.0	21.64	151.17	2,941.8	-693.2	381.5	791.2	0.00	0.00	0.00
3,120.0	21.64	151.17	2,979.0	-706.1	388.7	806.0	0.00	0.00	0.00
3,160.0	21.64	151.17	3,016.2	-719.0	395.8	820.7	0.00	0.00	0.00
3,200.0	21.64	151.17	3,053.4	-731.9	402.9	835.5	0.00	0.00	0.00
3,240.0	21.64	151.17	3,090.5	-744.9	410.0	850.2	0.00	0.00	0.00
3,280.0	21.64	151.17	3,127.7	-757.8	417.1	865.0	0.00	0.00	0.00
3,320.0	21.64	151.17	3,164.9	-770.7	424.2	879.7	0.00	0.00	0.00
3,360.0	21.64	151.17	3,202.1	-783.6	431.3	894.5	0.00	0.00	0.00
3,400.0	21.64	151.17	3,239.3	-796.6	438.5	909.3	0.00	0.00	0.00
3,440.0	21.64	151.17	3,276.4	-809.5	445.6	924.0	0.00	0.00	0.00
3,480.0	21.64	151.17	3,313.6	-822.4	452.7	938.8	0.00	0.00	0.00
3,520.0	21.64	151.17	3,350.8	-835.3	459.8	953.5	0.00	0.00	0.00
3,560.0	21.64	151.17	3,388.0	-848.2	466.9	968.3	0.00	0.00	0.00
3,600.0	21.64	151.17	3,425.2	-861.2	474.0	983.0	0.00	0.00	0.00
3,640.0	21.64	151.17	3,462.3	-874.1	481.1	997.8	0.00	0.00	0.00
3,680.0	21.64	151.17	3,499.5	-887.0	488.2	1,012.5	0.00	0.00	0.00
3,720.0	21.64	151.17	3,536.7	-899.9	495.4	1,027.3	0.00	0.00	0.00
3,760.0	21.64	151.17	3,573.9	-912.9	502.5	1,042.0	0.00	0.00	0.00
3,800.0	21.64	151.17	3,611.1	-925.8	509.6	1,056.8	0.00	0.00	0.00
3,810.7	21.64	151.17	3,621.0	-929.2	511.5	1,060.7	0.00	0.00	0.00
PARKMAN									
3,840.0	21.64	151.17	3,648.3	-938.7	516.7	1,071.5	0.00	0.00	0.00
3,880.0	21.64	151.17	3,685.4	-951.6	523.8	1,086.3	0.00	0.00	0.00
3,920.0	21.64	151.17	3,722.6	-964.6	530.9	1,101.0	0.00	0.00	0.00

Database:	Landmark	Local Co-ordinate Reference:	Well Baldrige 17-1
Company:	BAYSWATER EXPLORATION & PRODUCTION	TVD Reference:	WELL @ 4893.0ft (Original Well Elev)
Project:	SEC.36-T7N-R67W	MD Reference:	WELL @ 4893.0ft (Original Well Elev)
Site:	Baldrige & Schneider Pad Sec.36-T7N-R67W	North Reference:	True
Well:	Baldrige 17-1	Survey Calculation Method:	Minimum Curvature
Wellbore:	Wellbore #1		
Design:	Plan #1 (4-12-12)		

Planned Survey									
Measured Depth (ft)	Inclination (°)	Azimuth (°)	Vertical Depth (ft)	+N/-S (ft)	+E/-W (ft)	Vertical Section (ft)	Dogleg Rate (°/100ft)	Build Rate (°/100ft)	Turn Rate (°/100ft)
3,960.0	21.64	151.17	3,759.8	-977.5	538.0	1,115.8	0.00	0.00	0.00
4,000.0	21.64	151.17	3,797.0	-990.4	545.2	1,130.5	0.00	0.00	0.00
4,040.0	21.64	151.17	3,834.2	-1,003.3	552.3	1,145.3	0.00	0.00	0.00
4,080.0	21.64	151.17	3,871.3	-1,016.2	559.4	1,160.0	0.00	0.00	0.00
4,120.0	21.64	151.17	3,908.5	-1,029.2	566.5	1,174.8	0.00	0.00	0.00
4,160.0	21.64	151.17	3,945.7	-1,042.1	573.6	1,189.5	0.00	0.00	0.00
4,200.0	21.64	151.17	3,982.9	-1,055.0	580.7	1,204.3	0.00	0.00	0.00
4,240.0	21.64	151.17	4,020.1	-1,067.9	587.8	1,219.0	0.00	0.00	0.00
4,280.0	21.64	151.17	4,057.2	-1,080.9	595.0	1,233.8	0.00	0.00	0.00
4,320.0	21.64	151.17	4,094.4	-1,093.8	602.1	1,248.5	0.00	0.00	0.00
4,360.0	21.64	151.17	4,131.6	-1,106.7	609.2	1,263.3	0.00	0.00	0.00
4,400.0	21.64	151.17	4,168.8	-1,119.6	616.3	1,278.0	0.00	0.00	0.00
4,440.0	21.64	151.17	4,206.0	-1,132.6	623.4	1,292.8	0.00	0.00	0.00
4,480.0	21.64	151.17	4,243.1	-1,145.5	630.5	1,307.5	0.00	0.00	0.00
4,520.0	21.64	151.17	4,280.3	-1,158.4	637.6	1,322.3	0.00	0.00	0.00
4,560.0	21.64	151.17	4,317.5	-1,171.3	644.7	1,337.0	0.00	0.00	0.00
4,574.5	21.64	151.17	4,331.0	-1,176.0	647.3	1,342.4	0.00	0.00	0.00
SUSSEX									
4,600.0	21.64	151.17	4,354.7	-1,184.2	651.9	1,351.8	0.00	0.00	0.00
4,640.0	21.64	151.17	4,391.9	-1,197.2	659.0	1,366.5	0.00	0.00	0.00
4,680.0	21.64	151.17	4,429.0	-1,210.1	666.1	1,381.3	0.00	0.00	0.00
4,720.0	21.64	151.17	4,466.2	-1,223.0	673.2	1,396.1	0.00	0.00	0.00
4,760.0	21.64	151.17	4,503.4	-1,235.9	680.3	1,410.8	0.00	0.00	0.00
4,800.0	21.64	151.17	4,540.6	-1,248.9	687.4	1,425.6	0.00	0.00	0.00
4,840.0	21.64	151.17	4,577.8	-1,261.8	694.5	1,440.3	0.00	0.00	0.00
4,880.0	21.64	151.17	4,614.9	-1,274.7	701.7	1,455.1	0.00	0.00	0.00
4,920.0	21.64	151.17	4,652.1	-1,287.6	708.8	1,469.8	0.00	0.00	0.00
4,960.0	21.64	151.17	4,689.3	-1,300.6	715.9	1,484.6	0.00	0.00	0.00
5,000.0	21.64	151.17	4,726.5	-1,313.5	723.0	1,499.3	0.00	0.00	0.00
5,004.9	21.64	151.17	4,731.0	-1,315.0	723.9	1,501.1	0.00	0.00	0.00
SHANNON									
5,040.0	21.64	151.17	4,763.7	-1,326.4	730.1	1,514.1	0.00	0.00	0.00
5,080.0	21.64	151.17	4,800.8	-1,339.3	737.2	1,528.8	0.00	0.00	0.00
5,120.0	21.64	151.17	4,838.0	-1,352.2	744.3	1,543.6	0.00	0.00	0.00
5,160.0	21.64	151.17	4,875.2	-1,365.2	751.4	1,558.3	0.00	0.00	0.00
5,200.0	21.64	151.17	4,912.4	-1,378.1	758.6	1,573.1	0.00	0.00	0.00
5,233.5	21.64	151.17	4,943.5	-1,388.9	764.5	1,585.4	0.00	0.00	0.00
5,240.0	21.51	151.17	4,949.6	-1,391.0	765.7	1,587.8	2.00	-2.00	0.00
5,280.0	20.71	151.17	4,986.9	-1,403.6	772.6	1,602.2	2.00	-2.00	0.00
5,320.0	19.91	151.17	5,024.4	-1,415.8	779.3	1,616.1	2.00	-2.00	0.00
5,360.0	19.11	151.17	5,062.1	-1,427.5	785.8	1,629.5	2.00	-2.00	0.00
5,400.0	18.31	151.17	5,100.0	-1,438.7	791.9	1,642.3	2.00	-2.00	0.00
5,440.0	17.51	151.17	5,138.0	-1,449.5	797.9	1,654.6	2.00	-2.00	0.00
5,480.0	16.71	151.17	5,176.3	-1,459.8	803.5	1,666.4	2.00	-2.00	0.00
5,520.0	15.91	151.17	5,214.7	-1,469.7	809.0	1,677.6	2.00	-2.00	0.00
5,560.0	15.11	151.17	5,253.2	-1,479.0	814.1	1,688.3	2.00	-2.00	0.00
5,600.0	14.31	151.17	5,291.9	-1,487.9	819.0	1,698.5	2.00	-2.00	0.00
5,640.0	13.51	151.17	5,330.7	-1,496.4	823.7	1,708.1	2.00	-2.00	0.00
5,680.0	12.71	151.17	5,369.7	-1,504.3	828.0	1,717.1	2.00	-2.00	0.00
5,720.0	11.91	151.17	5,408.8	-1,511.8	832.1	1,725.7	2.00	-2.00	0.00
5,760.0	11.11	151.17	5,448.0	-1,518.8	836.0	1,733.7	2.00	-2.00	0.00
5,800.0	10.31	151.17	5,487.3	-1,525.3	839.6	1,741.1	2.00	-2.00	0.00

Database:	Landmark	Local Co-ordinate Reference:	Well Baldridge 17-1
Company:	BAYSWATER EXPLORATION & PRODUCTION	TVD Reference:	WELL @ 4893.0ft (Original Well Elev)
Project:	SEC.36-T7N-R67W	MD Reference:	WELL @ 4893.0ft (Original Well Elev)
Site:	Baldridge & Schneider Pad Sec.36-T7N-R67W	North Reference:	True
Well:	Baldridge 17-1	Survey Calculation Method:	Minimum Curvature
Wellbore:	Wellbore #1		
Design:	Plan #1 (4-12-12)		

Planned Survey									
Measured Depth (ft)	Inclination (°)	Azimuth (°)	Vertical Depth (ft)	+N/-S (ft)	+E/-W (ft)	Vertical Section (ft)	Dogleg Rate (°/100ft)	Build Rate (°/100ft)	Turn Rate (°/100ft)
5,840.0	9.51	151.17	5,526.7	-1,531.3	842.9	1,748.0	2.00	-2.00	0.00
5,880.0	8.71	151.17	5,566.2	-1,536.9	846.0	1,754.3	2.00	-2.00	0.00
5,920.0	7.91	151.17	5,605.7	-1,541.9	848.7	1,760.1	2.00	-2.00	0.00
5,960.0	7.11	151.17	5,645.4	-1,546.5	851.3	1,765.3	2.00	-2.00	0.00
6,000.0	6.31	151.17	5,685.1	-1,550.6	853.5	1,770.0	2.00	-2.00	0.00
6,040.0	5.51	151.17	5,724.9	-1,554.2	855.5	1,774.1	2.00	-2.00	0.00
6,080.0	4.71	151.17	5,764.7	-1,557.3	857.2	1,777.7	2.00	-2.00	0.00
6,120.0	3.91	151.17	5,804.6	-1,560.0	858.7	1,780.7	2.00	-2.00	0.00
6,160.0	3.11	151.17	5,844.6	-1,562.1	859.9	1,783.1	2.00	-2.00	0.00
6,200.0	2.31	151.17	5,884.5	-1,563.8	860.8	1,785.0	2.00	-2.00	0.00
6,240.0	1.51	151.17	5,924.5	-1,564.9	861.4	1,786.3	2.00	-2.00	0.00
6,280.0	0.71	151.17	5,964.5	-1,565.6	861.8	1,787.1	2.00	-2.00	0.00
6,315.5	0.00	0.00	6,000.0	-1,565.8	861.9	1,787.3	2.00	-2.00	-425.64
TARGET BHL 1329'FNL, 1315'FEL									
6,320.0	0.00	0.00	6,004.5	-1,565.8	861.9	1,787.3	0.00	0.00	0.00
6,360.0	0.00	0.00	6,044.5	-1,565.8	861.9	1,787.3	0.00	0.00	0.00
6,400.0	0.00	0.00	6,084.5	-1,565.8	861.9	1,787.3	0.00	0.00	0.00
6,440.0	0.00	0.00	6,124.5	-1,565.8	861.9	1,787.3	0.00	0.00	0.00
6,480.0	0.00	0.00	6,164.5	-1,565.8	861.9	1,787.3	0.00	0.00	0.00
6,520.0	0.00	0.00	6,204.5	-1,565.8	861.9	1,787.3	0.00	0.00	0.00
6,560.0	0.00	0.00	6,244.5	-1,565.8	861.9	1,787.3	0.00	0.00	0.00
6,600.0	0.00	0.00	6,284.5	-1,565.8	861.9	1,787.3	0.00	0.00	0.00
6,640.0	0.00	0.00	6,324.5	-1,565.8	861.9	1,787.3	0.00	0.00	0.00
6,680.0	0.00	0.00	6,364.5	-1,565.8	861.9	1,787.3	0.00	0.00	0.00
6,720.0	0.00	0.00	6,404.5	-1,565.8	861.9	1,787.3	0.00	0.00	0.00
6,760.0	0.00	0.00	6,444.5	-1,565.8	861.9	1,787.3	0.00	0.00	0.00
6,800.0	0.00	0.00	6,484.5	-1,565.8	861.9	1,787.3	0.00	0.00	0.00
6,840.0	0.00	0.00	6,524.5	-1,565.8	861.9	1,787.3	0.00	0.00	0.00
6,880.0	0.00	0.00	6,564.5	-1,565.8	861.9	1,787.3	0.00	0.00	0.00
6,920.0	0.00	0.00	6,604.5	-1,565.8	861.9	1,787.3	0.00	0.00	0.00
6,960.0	0.00	0.00	6,644.5	-1,565.8	861.9	1,787.3	0.00	0.00	0.00
7,000.0	0.00	0.00	6,684.5	-1,565.8	861.9	1,787.3	0.00	0.00	0.00
7,040.0	0.00	0.00	6,724.5	-1,565.8	861.9	1,787.3	0.00	0.00	0.00
7,080.0	0.00	0.00	6,764.5	-1,565.8	861.9	1,787.3	0.00	0.00	0.00
7,120.0	0.00	0.00	6,804.5	-1,565.8	861.9	1,787.3	0.00	0.00	0.00
7,160.0	0.00	0.00	6,844.5	-1,565.8	861.9	1,787.3	0.00	0.00	0.00
7,200.0	0.00	0.00	6,884.5	-1,565.8	861.9	1,787.3	0.00	0.00	0.00
7,240.0	0.00	0.00	6,924.5	-1,565.8	861.9	1,787.3	0.00	0.00	0.00
7,280.0	0.00	0.00	6,964.5	-1,565.8	861.9	1,787.3	0.00	0.00	0.00
7,296.5	0.00	0.00	6,981.0	-1,565.8	861.9	1,787.3	0.00	0.00	0.00
NIOBRARA - TARGET CIRCLE 1329'FNL & 1315'FEL - LEGAL BOX 800' X 800' 1329'FNL & 1315'FEL									
7,320.0	0.00	0.00	7,004.5	-1,565.8	861.9	1,787.3	0.00	0.00	0.00
7,360.0	0.00	0.00	7,044.5	-1,565.8	861.9	1,787.3	0.00	0.00	0.00
7,400.0	0.00	0.00	7,084.5	-1,565.8	861.9	1,787.3	0.00	0.00	0.00
7,440.0	0.00	0.00	7,124.5	-1,565.8	861.9	1,787.3	0.00	0.00	0.00
7,480.0	0.00	0.00	7,164.5	-1,565.8	861.9	1,787.3	0.00	0.00	0.00
7,520.0	0.00	0.00	7,204.5	-1,565.8	861.9	1,787.3	0.00	0.00	0.00
7,560.0	0.00	0.00	7,244.5	-1,565.8	861.9	1,787.3	0.00	0.00	0.00
7,572.5	0.00	0.00	7,257.0	-1,565.8	861.9	1,787.3	0.00	0.00	0.00
FT. HAYS									
7,600.0	0.00	0.00	7,284.5	-1,565.8	861.9	1,787.3	0.00	0.00	0.00
7,608.5	0.00	0.00	7,293.0	-1,565.8	861.9	1,787.3	0.00	0.00	0.00

Database:	Landmark	Local Co-ordinate Reference:	Well Baldrige 17-1
Company:	BAYSWATER EXPLORATION & PRODUCTION	TVD Reference:	WELL @ 4893.0ft (Original Well Elev)
Project:	SEC.36-T7N-R67W	MD Reference:	WELL @ 4893.0ft (Original Well Elev)
Site:	Baldrige & Schneider Pad Sec.36-T7N-R67W	North Reference:	True
Well:	Baldrige 17-1	Survey Calculation Method:	Minimum Curvature
Wellbore:	Wellbore #1		
Design:	Plan #1 (4-12-12)		

Planned Survey										
Measured Depth (ft)	Inclination (°)	Azimuth (°)	Vertical Depth (ft)	+N/-S (ft)	+E/-W (ft)	Vertical Section (ft)	Dogleg Rate (°/100ft)	Build Rate (°/100ft)	Turn Rate (°/100ft)	
CODELL										
7,640.0	0.00	0.00	7,324.5	-1,565.8	861.9	1,787.3	0.00	0.00	0.00	
7,660.5	0.00	0.00	7,345.0	-1,565.8	861.9	1,787.3	0.00	0.00	0.00	
GREENHORN										
7,680.0	0.00	0.00	7,364.5	-1,565.8	861.9	1,787.3	0.00	0.00	0.00	
7,720.0	0.00	0.00	7,404.5	-1,565.8	861.9	1,787.3	0.00	0.00	0.00	
7,744.5	0.00	0.00	7,429.0	-1,565.8	861.9	1,787.3	0.00	0.00	0.00	
GRANEROS										
7,760.0	0.00	0.00	7,444.5	-1,565.8	861.9	1,787.3	0.00	0.00	0.00	
7,760.5	0.00	0.00	7,445.0	-1,565.8	861.9	1,787.3	0.00	0.00	0.00	

Targets										
Target Name	Dip Angle (°)	Dip Dir. (°)	TVD (ft)	+N/-S (ft)	+E/-W (ft)	Northing (ft)	Easting (ft)	Latitude	Longitude	
- hit/miss target										
- Shape										
TARGET CIRCLE 132'	0.00	0.00	6,981.0	-1,565.8	861.9	1,432,893.28	3,184,334.34	40.519801	-104.836964	
- plan hits target center										
- Circle (radius 75.0)										
TARGET BHL 1329'F	0.00	0.00	6,000.0	-1,565.8	861.9	1,432,893.28	3,184,334.34	40.519801	-104.836964	
- plan hits target center										
- Point										
LEGAL BOX 800' X 800'	0.00	0.00	6,981.0	-1,565.8	861.9	1,432,893.28	3,184,334.34	40.519801	-104.836964	
- plan hits target center										
- Rectangle (sides W800.0 H800.0 D464.0)										

Casing Points						
Measured Depth (ft)	Vertical Depth (ft)	Name	Casing Diameter (")	Hole Diameter (")		
565.1	565.0	8 5/8"	8-5/8	12-1/4		

Formations						
Measured Depth (ft)	Vertical Depth (ft)	Name	Lithology	Dip (°)	Dip Direction (°)	
3,810.7	3,621.0	PARKMAN		0.00		
4,574.5	4,331.0	SUSSEX		0.00		
5,004.9	4,731.0	SHANNON		0.00		
7,296.5	6,981.0	NIOBRARA		0.00		
7,572.5	7,257.0	FT. HAYS		0.00		
7,608.5	7,293.0	CODELL		0.00		
7,660.5	7,345.0	GREENHORN		0.00		
7,744.5	7,429.0	GRANEROS		0.00		



BAYSWATER EXPLORATION & PRODUCTION

SEC.36-T7N-R67W

Baldrige & Schneider Pad Sec.36-T7N-R67W

Baldrige 17-1

Wellbore #1

Plan #1 (4-12-12)

Anticollision Report

20 April, 2012

Baldridge & Schneider Pad Sec.36-T7N-R67W - Baldridge 2-1 - Wellbore #1 - Plan #1 (4-12-12)													Offset Site Error:	0.0 ft
Survey Program: 0-MWD													Offset Well Error:	0.0 ft
Reference		Offset		Semi Major Axis			Distance							
Measured Depth	Vertical Depth	Measured Depth	Vertical Depth	Reference	Offset	Highside Toolface	Offset Wellbore Centre		Between Centres	Between Ellipses	Minimum Separation	Separation Factor	Warning	
(ft)	(ft)	(ft)	(ft)	(ft)	(ft)	(°)	+N/-S (ft)	+E/-W (ft)	(ft)	(ft)	(ft)			
2,000.0	1,937.9	1,995.9	1,978.5	8.8	5.4	164.32	-181.2	29.3	232.3	222.5	9.79	23.722		
2,100.0	2,030.9	2,094.2	2,074.7	9.6	5.8	164.20	-201.0	34.1	250.6	240.1	10.47	23.929		
2,200.0	2,123.8	2,192.5	2,170.9	10.3	6.3	164.10	-220.8	38.9	268.9	257.7	11.16	24.097		
2,300.0	2,216.8	2,290.8	2,267.1	11.1	6.7	164.02	-240.7	43.7	287.2	275.3	11.85	24.236		
2,400.0	2,309.8	2,389.1	2,363.2	11.8	7.1	163.94	-260.5	48.6	305.5	292.9	12.54	24.352		
2,500.0	2,402.7	2,487.4	2,459.4	12.6	7.6	163.88	-280.3	53.4	323.8	310.5	13.24	24.449		
2,600.0	2,495.7	2,585.7	2,555.6	13.3	8.0	163.82	-300.1	58.2	342.1	328.1	13.94	24.531		
2,700.0	2,588.6	2,684.1	2,651.8	14.1	8.4	163.77	-319.9	63.0	360.4	345.7	14.65	24.601		
2,800.0	2,681.6	2,782.4	2,747.9	14.9	8.9	163.72	-339.7	67.8	378.6	363.3	15.35	24.660		
2,900.0	2,774.5	2,880.7	2,844.1	15.6	9.3	163.67	-359.5	72.7	396.9	380.9	16.06	24.712		
3,000.0	2,867.5	2,979.0	2,940.3	16.4	9.8	163.63	-379.3	77.5	415.2	398.5	16.77	24.757		
3,100.0	2,960.4	3,077.3	3,036.5	17.1	10.2	163.60	-399.1	82.3	433.5	416.0	17.48	24.796		
3,200.0	3,053.4	3,175.6	3,132.7	17.9	10.6	163.56	-418.9	87.1	451.8	433.6	18.20	24.830		
3,300.0	3,146.3	3,273.9	3,228.8	18.7	11.1	163.53	-438.7	91.9	470.1	451.2	18.91	24.860		
3,400.0	3,239.3	3,372.2	3,325.0	19.4	11.5	163.50	-458.5	96.8	488.4	468.8	19.63	24.886		
3,500.0	3,332.2	3,470.6	3,421.2	20.2	12.0	163.48	-478.3	101.6	506.7	486.4	20.34	24.909		
3,600.0	3,425.2	3,568.9	3,517.4	21.0	12.4	163.45	-498.1	106.4	525.0	503.9	21.06	24.930		
3,700.0	3,518.1	3,667.2	3,613.5	21.7	12.9	163.43	-517.9	111.2	543.3	521.5	21.78	24.949		
3,800.0	3,611.1	3,765.5	3,709.7	22.5	13.3	163.41	-537.8	116.0	561.6	539.1	22.49	24.965		
3,900.0	3,704.0	3,863.8	3,805.9	23.3	13.8	163.39	-557.6	120.9	579.9	556.7	23.21	24.980		
4,000.0	3,797.0	3,962.1	3,902.1	24.0	14.2	163.37	-577.4	125.7	598.2	574.2	23.93	24.994		
4,100.0	3,889.9	4,060.4	3,998.2	24.8	14.7	163.35	-597.2	130.5	616.5	591.8	24.65	25.006		
4,200.0	3,982.9	4,158.7	4,094.4	25.6	15.1	163.33	-617.0	135.3	634.8	609.4	25.37	25.017		
4,300.0	4,075.8	4,257.1	4,190.6	26.3	15.6	163.32	-636.8	140.1	653.1	627.0	26.09	25.026		
4,400.0	4,168.8	4,355.4	4,286.8	27.1	16.0	163.30	-656.6	144.9	671.4	644.5	26.82	25.035		
4,500.0	4,261.7	4,453.7	4,382.9	27.9	16.4	163.29	-676.4	149.8	689.6	662.1	27.54	25.043		
4,600.0	4,354.7	4,552.0	4,479.1	28.6	16.9	163.27	-696.2	154.6	707.9	679.7	28.26	25.051		
4,700.0	4,447.6	4,650.3	4,575.3	29.4	17.3	163.26	-716.0	159.4	726.2	697.3	28.98	25.057		
4,800.0	4,540.6	4,748.6	4,671.5	30.2	17.8	163.25	-735.8	164.2	744.5	714.8	29.71	25.064		
4,900.0	4,633.5	4,846.9	4,767.6	30.9	18.2	163.24	-755.6	169.0	762.8	732.4	30.43	25.069		
5,000.0	4,726.5	4,945.2	4,863.8	31.7	18.7	163.23	-775.4	173.9	781.1	750.0	31.15	25.074		
5,100.0	4,819.4	5,043.5	4,960.0	32.5	19.1	163.22	-795.2	178.7	799.4	767.5	31.88	25.079		
5,200.0	4,912.4	5,141.9	5,056.2	33.2	19.6	163.21	-815.1	183.5	817.7	785.1	32.60	25.083		
5,233.5	4,943.5	5,174.8	5,088.3	33.5	19.7	163.20	-821.7	185.1	823.8	791.0	32.84	25.084		
5,300.0	5,005.6	5,240.3	5,152.5	33.9	20.0	163.25	-834.9	188.3	835.3	801.9	33.34	25.050		
5,400.0	5,100.0	5,330.3	5,240.6	34.4	20.4	163.26	-852.8	192.7	850.0	816.0	33.99	25.003		
5,500.0	5,195.5	5,400.0	5,309.1	34.9	20.6	163.29	-865.2	195.7	863.4	828.9	34.49	25.030		
5,600.0	5,291.9	5,488.1	5,396.1	35.3	20.9	163.33	-878.6	199.0	875.7	840.7	34.97	25.040		
5,700.0	5,389.2	5,566.8	5,474.2	35.7	21.0	163.40	-888.3	201.3	887.0	851.7	35.36	25.087		
5,800.0	5,487.3	5,645.4	5,552.4	36.0	21.2	163.47	-896.0	203.2	897.4	861.7	35.68	25.153		
5,900.0	5,585.9	5,723.9	5,630.6	36.3	21.4	163.57	-901.5	204.6	906.8	870.9	35.93	25.238		
6,000.0	5,685.1	5,800.0	5,706.6	36.5	21.5	163.67	-904.9	205.4	915.1	879.0	36.11	25.343		
6,100.0	5,784.7	5,880.6	5,787.2	36.7	21.6	163.79	-906.4	205.7	922.5	886.2	36.24	25.456		
6,200.0	5,884.5	5,976.9	5,883.5	36.8	21.7	163.92	-906.4	205.7	928.0	891.7	36.32	25.549		
6,300.0	5,984.5	6,076.9	5,983.5	36.9	21.8	163.97	-906.4	205.7	930.2	893.8	36.39	25.564		
6,315.5	6,000.0	6,092.4	5,999.0	36.9	21.8	-44.86	-906.4	205.7	930.2	893.8	36.40	25.558		
6,400.0	6,084.5	6,176.9	6,083.5	37.0	21.9	-44.86	-906.4	205.7	930.2	893.6	36.62	25.400		
6,500.0	6,184.5	6,276.9	6,183.5	37.1	22.0	-44.86	-906.4	205.7	930.2	893.4	36.88	25.221		
6,600.0	6,284.5	6,376.9	6,283.5	37.1	22.1	-44.86	-906.4	205.7	930.2	893.1	37.15	25.042		
6,700.0	6,384.5	6,476.9	6,383.5	37.2	22.2	-44.86	-906.4	205.7	930.2	892.8	37.41	24.864		
6,800.0	6,484.5	6,576.9	6,483.5	37.3	22.4	-44.86	-906.4	205.7	930.2	892.6	37.68	24.685		

Company:	BAYSWATER EXPLORATION & PRODUCTION	Local Co-ordinate Reference:	Well Baldrige 17-1
Project:	SEC.36-T7N-R67W	TVD Reference:	WELL @ 4893.0ft (Original Well Elev)
Reference Site:	Baldrige & Schneider Pad Sec.36-T7N-R67W	MD Reference:	WELL @ 4893.0ft (Original Well Elev)
Site Error:	0.0ft	North Reference:	True
Reference Well:	Baldrige 17-1	Survey Calculation Method:	Minimum Curvature
Well Error:	0.0ft	Output errors are at	2.00 sigma
Reference Wellbore	Wellbore #1	Database:	Landmark
Reference Design:	Plan #1 (4-12-12)	Offset TVD Reference:	Offset Datum

Offset Design												Offset Site Error:	0.0 ft
Baldrige & Schneider Pad Sec.36-T7N-R67W - Baldrige 2-1 - Wellbore #1 - Plan #1 (4-12-12)												Offset Well Error:	0.0 ft
Survey Program: 0-MWD													
Reference		Offset		Semi Major Axis			Distance						
Measured Depth (ft)	Vertical Depth (ft)	Measured Depth (ft)	Vertical Depth (ft)	Reference (ft)	Offset (ft)	Highside Toolface (°)	Offset Wellbore Centre +N/-S (ft)	+E/-W (ft)	Between Centres (ft)	Between Ellipses (ft)	Minimum Separation (ft)	Separation Factor	Warning
6,900.0	6,584.5	6,676.9	6,583.5	37.3	22.5	-44.86	-906.4	205.7	930.2	892.3	37.96	24.507	
7,000.0	6,684.5	6,776.9	6,683.5	37.4	22.6	-44.86	-906.4	205.7	930.2	892.0	38.23	24.330	
7,100.0	6,784.5	6,876.9	6,783.5	37.5	22.7	-44.86	-906.4	205.7	930.2	891.7	38.51	24.153	
7,200.0	6,884.5	6,976.9	6,883.5	37.6	22.8	-44.86	-906.4	205.7	930.2	891.4	38.80	23.976	
7,300.0	6,984.5	7,076.9	6,983.5	37.6	22.9	-44.86	-906.4	205.7	930.2	891.2	39.08	23.801	
7,400.0	7,084.5	7,176.9	7,083.5	37.7	23.1	-44.86	-906.4	205.7	930.2	890.9	39.37	23.626	
7,500.0	7,184.5	7,276.9	7,183.5	37.8	23.2	-44.86	-906.4	205.7	930.2	890.6	39.67	23.451	
7,600.0	7,284.5	7,376.9	7,283.5	37.9	23.3	-44.86	-906.4	205.7	930.2	890.3	39.96	23.278	
7,700.0	7,384.5	7,476.9	7,383.5	37.9	23.4	-44.86	-906.4	205.7	930.2	890.0	40.26	23.106	
7,760.5	7,445.0	7,537.4	7,444.0	38.0	23.5	-44.86	-906.4	205.7	930.2	889.8	40.44	23.002	

Company:	BAYSWATER EXPLORATION & PRODUCTION	Local Co-ordinate Reference:	Well Baldridge 17-1
Project:	SEC.36-T7N-R67W	TVD Reference:	WELL @ 4893.0ft (Original Well Elev)
Reference Site:	Baldridge & Schneider Pad Sec.36-T7N-R67W	MD Reference:	WELL @ 4893.0ft (Original Well Elev)
Site Error:	0.0ft	North Reference:	True
Reference Well:	Baldridge 17-1	Survey Calculation Method:	Minimum Curvature
Well Error:	0.0ft	Output errors are at	2.00 sigma
Reference Wellbore	Wellbore #1	Database:	Landmark
Reference Design:	Plan #1 (4-12-12)	Offset TVD Reference:	Offset Datum

Offset Design													Offset Site Error:	0.0ft
Survey Program: 0-MWD													Offset Well Error:	0.0ft
Reference														
Measured Depth (ft)	Vertical Depth (ft)	Measured Depth (ft)	Vertical Depth (ft)	Semi Major Axis Reference (ft)	Semi Major Axis Offset (ft)	Highside Toolface (°)	Offset Wellbore Centre +N/-S (ft)	Offset Wellbore Centre +E/-W (ft)	Distance Between Centres (ft)	Distance Between Ellipses (ft)	Minimum Separation (ft)	Separation Factor	Warning	
0.0	0.0	0.0	0.0	0.0	0.0	89.97	0.0	15.0	15.0	15.0	0.00	N/A		
100.0	100.0	100.0	100.0	0.1	0.1	89.97	0.0	15.0	15.0	14.8	0.22	66.792		
200.0	200.0	200.0	200.0	0.3	0.3	89.97	0.0	15.0	15.0	14.3	0.67	22.264 CC, ES		
300.0	300.0	299.7	299.6	0.6	0.5	95.10	-1.4	16.0	16.1	14.9	1.10	14.547		
400.0	400.0	399.1	398.9	0.8	0.8	106.83	-5.7	18.9	19.8	18.2	1.54	12.841		
500.0	500.0	498.2	497.7	1.0	1.0	-34.79	-12.8	23.7	25.6	23.7	1.96	13.071		
600.0	599.8	597.1	595.8	1.2	1.3	-29.43	-22.7	30.4	32.0	29.6	2.38	13.444		
700.0	699.5	695.7	693.2	1.4	1.6	-26.31	-35.4	39.0	38.7	35.9	2.83	13.680		
800.0	798.7	794.1	789.9	1.7	2.0	-24.50	-50.8	49.5	45.5	42.2	3.30	13.788		
900.0	897.5	892.3	885.6	2.0	2.4	-23.50	-68.9	61.7	52.4	48.6	3.80	13.788		
1,000.0	995.6	990.2	980.2	2.3	2.9	-23.02	-89.6	75.8	59.4	55.0	4.34	13.694		
1,100.0	1,093.1	1,087.9	1,073.8	2.8	3.5	-22.90	-113.0	91.6	66.4	61.5	4.91	13.519		
1,200.0	1,189.6	1,185.4	1,166.1	3.3	4.1	-23.04	-138.9	109.2	73.4	67.9	5.53	13.272		
1,300.0	1,285.3	1,282.7	1,257.1	3.8	4.8	-23.37	-167.3	128.4	80.5	74.3	6.21	12.964		
1,400.0	1,379.8	1,379.7	1,346.7	4.4	5.5	-23.84	-198.2	149.4	87.5	80.6	6.94	12.622		
1,482.1	1,456.5	1,459.2	1,419.0	5.0	6.2	-24.30	-225.4	167.8	93.4	85.8	7.59	12.293		
1,500.0	1,473.2	1,476.6	1,434.7	5.1	6.4	-24.41	-231.5	172.0	94.7	86.9	7.75	12.220		
1,600.0	1,566.1	1,575.3	1,523.4	5.8	7.2	-24.74	-267.4	196.3	103.2	94.5	8.62	11.966		
1,700.0	1,659.1	1,674.9	1,612.9	6.6	8.1	-25.00	-303.7	220.9	111.8	102.3	9.52	11.747		
1,800.0	1,752.0	1,774.5	1,702.4	7.3	9.0	-25.22	-340.0	245.5	120.4	110.0	10.42	11.550		
1,900.0	1,845.0	1,874.2	1,791.8	8.1	9.9	-25.41	-376.3	270.1	129.0	117.7	11.35	11.373		
2,000.0	1,937.9	1,973.8	1,881.3	8.8	10.8	-25.58	-412.6	294.7	137.7	125.4	12.28	11.214		
2,100.0	2,030.9	2,073.4	1,970.7	9.6	11.7	-25.73	-448.9	319.3	146.3	133.1	13.21	11.071		
2,200.0	2,123.8	2,173.0	2,060.2	10.3	12.6	-25.86	-485.2	343.9	154.9	140.8	14.16	10.943		
2,300.0	2,216.8	2,272.7	2,149.7	11.1	13.6	-25.98	-521.5	368.5	163.5	148.4	15.11	10.827		
2,400.0	2,309.8	2,372.3	2,239.1	11.8	14.5	-26.09	-557.8	393.1	172.2	156.1	16.06	10.722		
2,500.0	2,402.7	2,471.9	2,328.6	12.6	15.4	-26.18	-594.0	417.7	180.8	163.8	17.02	10.626		
2,600.0	2,495.7	2,571.6	2,418.0	13.3	16.3	-26.27	-630.3	442.3	189.4	171.5	17.98	10.539		
2,700.0	2,588.6	2,671.2	2,507.5	14.1	17.2	-26.35	-666.6	466.9	198.1	179.1	18.94	10.460		
2,800.0	2,681.6	2,770.8	2,597.0	14.9	18.1	-26.42	-702.9	491.5	206.7	186.8	19.90	10.386		
2,900.0	2,774.5	2,870.4	2,686.4	15.6	19.1	-26.49	-739.2	516.1	215.3	194.5	20.87	10.319		
3,000.0	2,867.5	2,970.1	2,775.9	16.4	20.0	-26.55	-775.5	540.7	224.0	202.1	21.84	10.257		
3,100.0	2,960.4	3,069.7	2,865.3	17.1	20.9	-26.61	-811.8	565.3	232.6	209.8	22.81	10.200		
3,200.0	3,053.4	3,169.3	2,954.8	17.9	21.8	-26.66	-848.1	589.9	241.2	217.5	23.78	10.146		
3,300.0	3,146.3	3,268.9	3,044.3	18.7	22.7	-26.71	-884.4	614.5	249.9	225.1	24.75	10.097		
3,400.0	3,239.3	3,368.6	3,133.7	19.4	23.6	-26.76	-920.7	639.1	258.5	232.8	25.72	10.051		
3,500.0	3,332.2	3,468.2	3,223.2	20.2	24.6	-26.80	-957.0	663.7	267.1	240.4	26.69	10.007		
3,600.0	3,425.2	3,567.8	3,312.6	21.0	25.5	-26.84	-993.3	688.3	275.8	248.1	27.67	9.967		
3,700.0	3,518.1	3,667.4	3,402.1	21.7	26.4	-26.88	-1,029.6	712.9	284.4	255.8	28.64	9.929		
3,800.0	3,611.1	3,767.1	3,491.5	22.5	27.3	-26.91	-1,065.9	737.5	293.0	263.4	29.62	9.893		
3,900.0	3,704.0	3,866.7	3,581.0	23.3	28.2	-26.95	-1,102.2	762.2	301.7	271.1	30.60	9.859		
4,000.0	3,797.0	3,966.3	3,670.5	24.0	29.2	-26.98	-1,138.5	786.8	310.3	278.7	31.58	9.828		
4,100.0	3,889.9	4,065.9	3,759.9	24.8	30.1	-27.01	-1,174.7	811.4	318.9	286.4	32.55	9.798		
4,200.0	3,982.9	4,165.6	3,849.4	25.6	31.0	-27.04	-1,211.0	836.0	327.6	294.0	33.53	9.769		
4,300.0	4,075.8	4,255.2	3,938.8	26.3	31.9	-27.07	-1,247.3	860.6	336.2	301.7	34.51	9.742		
4,400.0	4,168.8	4,346.8	4,028.3	27.1	32.8	-27.09	-1,283.6	885.2	344.8	309.4	35.49	9.717		
4,500.0	4,261.7	4,436.5	4,117.8	27.9	33.8	-27.12	-1,319.9	909.8	353.5	317.0	36.47	9.693		
4,600.0	4,354.7	4,524.1	4,207.2	28.6	34.7	-27.14	-1,356.2	934.4	362.1	324.7	37.45	9.670		
4,700.0	4,447.6	4,613.7	4,296.7	29.4	35.6	-27.16	-1,392.5	959.0	370.8	332.3	38.43	9.648		
4,800.0	4,540.6	4,703.3	4,386.1	30.2	36.5	-27.18	-1,428.8	983.6	379.4	340.0	39.41	9.627		
4,900.0	4,633.5	4,796.0	4,475.6	30.9	37.5	-27.20	-1,465.1	1,008.2	388.0	347.6	40.39	9.607		

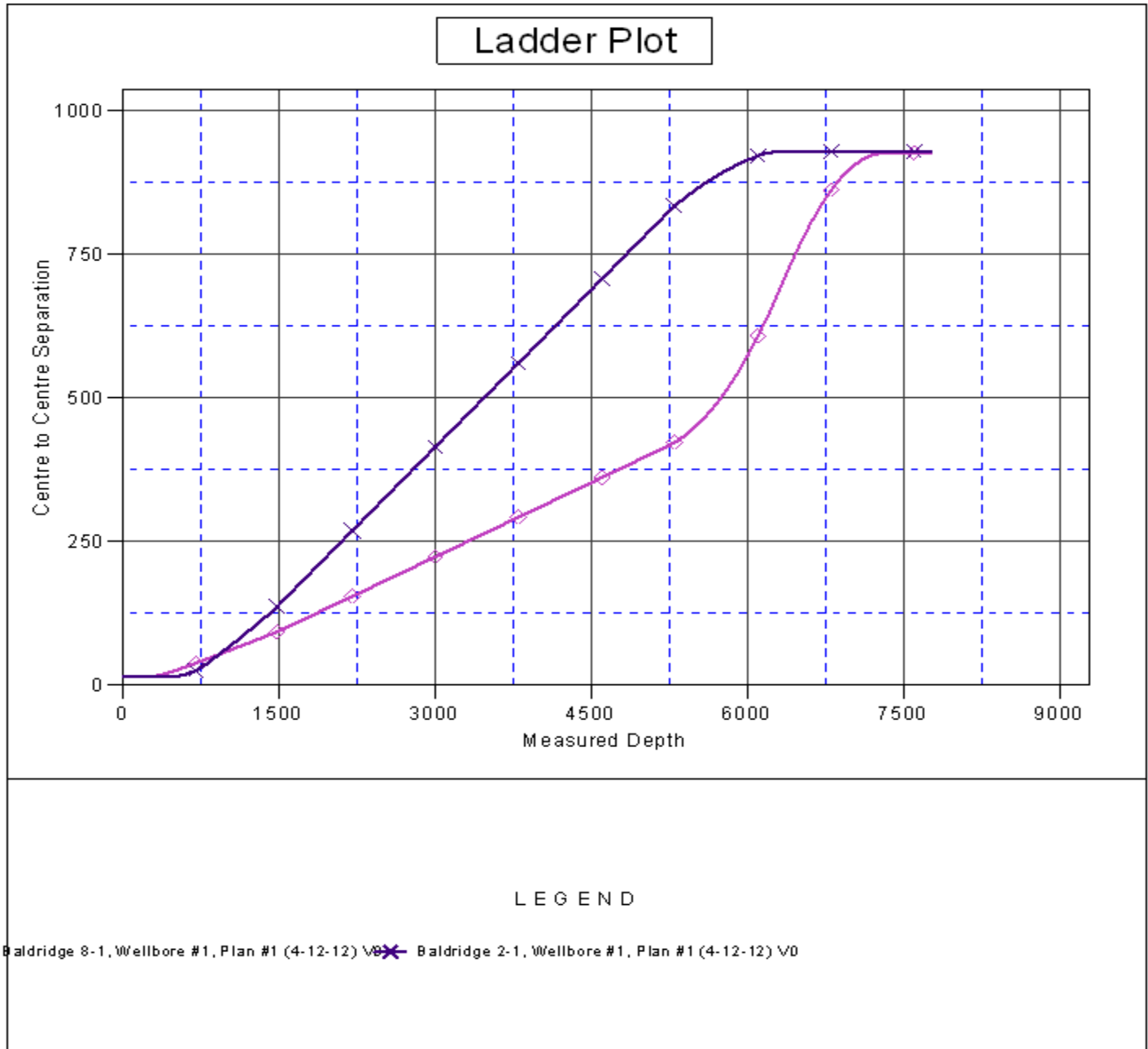
CC - Min centre to center distance or convergent point, SF - min separation factor, ES - min ellipse separation

Company:	BAYSWATER EXPLORATION & PRODUCTION	Local Co-ordinate Reference:	Well Baldridge 17-1
Project:	SEC.36-T7N-R67W	TVD Reference:	WELL @ 4893.0ft (Original Well Elev)
Reference Site:	Baldrige & Schneider Pad Sec.36-T7N-R67W	MD Reference:	WELL @ 4893.0ft (Original Well Elev)
Site Error:	0.0ft	North Reference:	True
Reference Well:	Baldrige 17-1	Survey Calculation Method:	Minimum Curvature
Well Error:	0.0ft	Output errors are at	2.00 sigma
Reference Wellbore	Wellbore #1	Database:	Landmark
Reference Design:	Plan #1 (4-12-12)	Offset TVD Reference:	Offset Datum

Offset Design													Offset Site Error:	0.0 ft
Baldrige & Schneider Pad Sec.36-T7N-R67W - Baldrige 8-1 - Wellbore #1 - Plan #1 (4-12-12)													Offset Well Error:	0.0 ft
Survey Program: 0-MWD														
Reference		Offset		Semi Major Axis			Distance							
Measured Depth (ft)	Vertical Depth (ft)	Measured Depth (ft)	Vertical Depth (ft)	Reference (ft)	Offset (ft)	Highside Toolface (°)	Offset Wellbore Centre +N/-S (ft)	+E/-W (ft)	Between Centres (ft)	Between Ellipses (ft)	Minimum Separation (ft)	Separation Factor	Warning	
5,000.0	4,726.5	4,962.6	4,565.1	31.7	38.4	-27.22	-1,501.4	1,032.8	396.7	355.3	41.37	9.588		
5,100.0	4,819.4	5,062.2	4,654.5	32.5	39.3	-27.24	-1,537.7	1,057.4	405.3	362.9	42.35	9.569		
5,200.0	4,912.4	5,161.8	4,744.0	33.2	40.2	-27.26	-1,574.0	1,082.0	413.9	370.6	43.33	9.552		
5,233.5	4,943.5	5,195.2	4,773.9	33.5	40.5	-27.27	-1,586.1	1,090.2	416.8	373.2	43.66	9.546 SF		
5,300.0	5,005.6	5,261.4	4,833.4	33.9	41.1	-27.29	-1,610.2	1,106.6	423.2	379.0	44.26	9.563		
5,400.0	5,100.0	5,360.6	4,922.5	34.4	42.1	-27.17	-1,646.4	1,131.1	435.5	390.5	44.96	9.686		
5,500.0	5,195.5	5,459.4	5,011.2	34.9	43.0	-26.89	-1,682.4	1,155.5	450.8	405.3	45.50	9.909		
5,600.0	5,291.9	5,557.6	5,099.3	35.3	43.9	-26.48	-1,718.1	1,179.7	469.2	423.4	45.87	10.229		
5,700.0	5,389.2	5,655.0	5,186.8	35.7	44.8	-25.95	-1,753.6	1,203.8	490.8	444.7	46.11	10.644		
5,800.0	5,487.3	5,751.7	5,273.6	36.0	45.7	-25.34	-1,788.8	1,227.6	515.5	469.3	46.21	11.154		
5,900.0	5,585.9	5,847.4	5,359.5	36.3	46.6	-24.67	-1,823.7	1,251.3	543.3	497.1	46.21	11.758		
6,000.0	5,685.1	5,942.0	5,444.5	36.5	47.4	-23.97	-1,858.2	1,274.6	574.3	528.2	46.11	12.456		
6,100.0	5,784.7	6,035.5	5,528.4	36.7	48.3	-23.26	-1,892.2	1,297.7	608.5	562.6	45.93	13.249		
6,200.0	5,884.5	6,127.6	5,611.2	36.8	49.1	-22.55	-1,925.8	1,320.5	645.9	600.2	45.68	14.140		
6,300.0	5,984.5	6,218.4	5,692.7	36.9	50.0	-21.86	-1,958.9	1,342.9	686.3	641.0	45.36	15.129		
6,315.5	6,000.0	6,232.4	5,705.2	36.9	50.1	129.41	-1,964.0	1,346.4	692.9	647.6	45.31	15.291		
6,400.0	6,084.5	6,320.7	5,784.7	37.0	50.8	130.35	-1,995.8	1,367.9	728.6	683.5	45.08	16.161		
6,500.0	6,184.5	6,443.2	5,896.8	37.1	51.6	131.42	-2,036.9	1,395.8	767.9	723.1	44.85	17.121		
6,600.0	6,284.5	6,570.3	6,015.1	37.1	52.4	132.30	-2,075.2	1,421.8	803.4	758.7	44.77	17.947		
6,700.0	6,384.5	6,701.6	6,139.4	37.2	53.1	133.01	-2,110.2	1,445.5	834.9	790.1	44.79	18.638		
6,800.0	6,484.5	6,836.9	6,269.3	37.3	53.7	133.58	-2,141.3	1,466.6	862.1	817.2	44.90	19.200		
6,900.0	6,584.5	6,975.6	6,404.2	37.3	54.2	134.04	-2,167.9	1,484.6	884.7	839.7	45.07	19.631		
7,000.0	6,684.5	7,117.2	6,543.4	37.4	54.6	134.38	-2,189.4	1,499.2	902.7	857.5	45.28	19.937		
7,100.0	6,784.5	7,261.1	6,686.0	37.5	55.0	134.62	-2,205.4	1,510.1	915.9	870.4	45.52	20.121		
7,200.0	6,884.5	7,406.6	6,831.0	37.6	55.2	134.77	-2,215.6	1,516.9	924.2	878.4	45.78	20.187		
7,300.0	6,984.5	7,553.0	6,977.3	37.6	55.3	134.83	-2,219.7	1,519.7	927.5	881.4	46.06	20.136		
7,400.0	7,084.5	7,660.2	7,084.5	37.7	55.4	134.83	-2,219.7	1,519.7	927.6	881.3	46.31	20.029		
7,500.0	7,184.5	7,760.2	7,184.5	37.8	55.4	134.83	-2,219.7	1,519.7	927.6	881.0	46.55	19.927		
7,600.0	7,284.5	7,860.2	7,284.5	37.9	55.5	134.83	-2,219.7	1,519.7	927.6	880.8	46.79	19.824		
7,700.0	7,384.5	7,960.2	7,384.5	37.9	55.5	134.83	-2,219.7	1,519.7	927.6	880.5	47.03	19.722		
7,760.5	7,445.0	8,020.7	7,445.0	38.0	55.6	134.83	-2,219.7	1,519.7	927.6	880.4	47.18	19.659		

Company:	BAYSWATER EXPLORATION & PRODUCTION	Local Co-ordinate Reference:	Well Baldridge 17-1
Project:	SEC.36-T7N-R67W	TVD Reference:	WELL @ 4893.0ft (Original Well Elev)
Reference Site:	Baldridge & Schneider Pad Sec.36-T7N-R67W	MD Reference:	WELL @ 4893.0ft (Original Well Elev)
Site Error:	0.0ft	North Reference:	True
Reference Well:	Baldridge 17-1	Survey Calculation Method:	Minimum Curvature
Well Error:	0.0ft	Output errors are at	2.00 sigma
Reference Wellbore	Wellbore #1	Database:	Landmark
Reference Design:	Plan #1 (4-12-12)	Offset TVD Reference:	Offset Datum

Reference Depths are relative to WELL @ 4893.0ft (Original Well Elev) Coordinates are relative to: Baldridge 17-1
Offset Depths are relative to Offset Datum Coordinate System is US State Plane 1983, Colorado Northern Zone
Central Meridian is -105.500000 ° Grid Convergence at Surface is: 0.43°



Company:	BAYSWATER EXPLORATION & PRODUCTION	Local Co-ordinate Reference:	Well Baldrige 17-1
Project:	SEC.36-T7N-R67W	TVD Reference:	WELL @ 4893.0ft (Original Well Elev)
Reference Site:	Baldrige & Schneider Pad Sec.36-T7N-R67W	MD Reference:	WELL @ 4893.0ft (Original Well Elev)
Site Error:	0.0ft	North Reference:	True
Reference Well:	Baldrige 17-1	Survey Calculation Method:	Minimum Curvature
Well Error:	0.0ft	Output errors are at	2.00 sigma
Reference Wellbore	Wellbore #1	Database:	Landmark
Reference Design:	Plan #1 (4-12-12)	Offset TVD Reference:	Offset Datum

Reference Depths are relative to WELL @ 4893.0ft (Original Well Elev) Coordinates are relative to: Baldrige 17-1
Offset Depths are relative to Offset Datum Coordinate System is US State Plane 1983, Colorado Northern Zone
Central Meridian is -105.500000 ° Grid Convergence at Surface is: 0.43°

