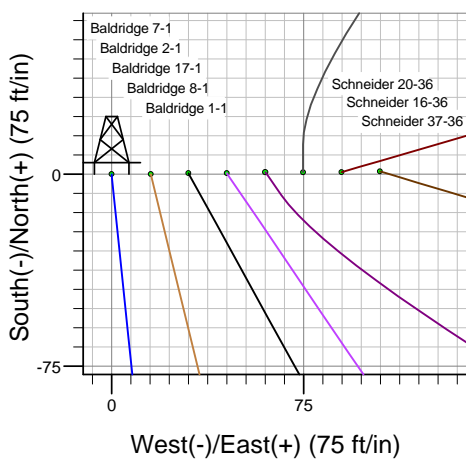
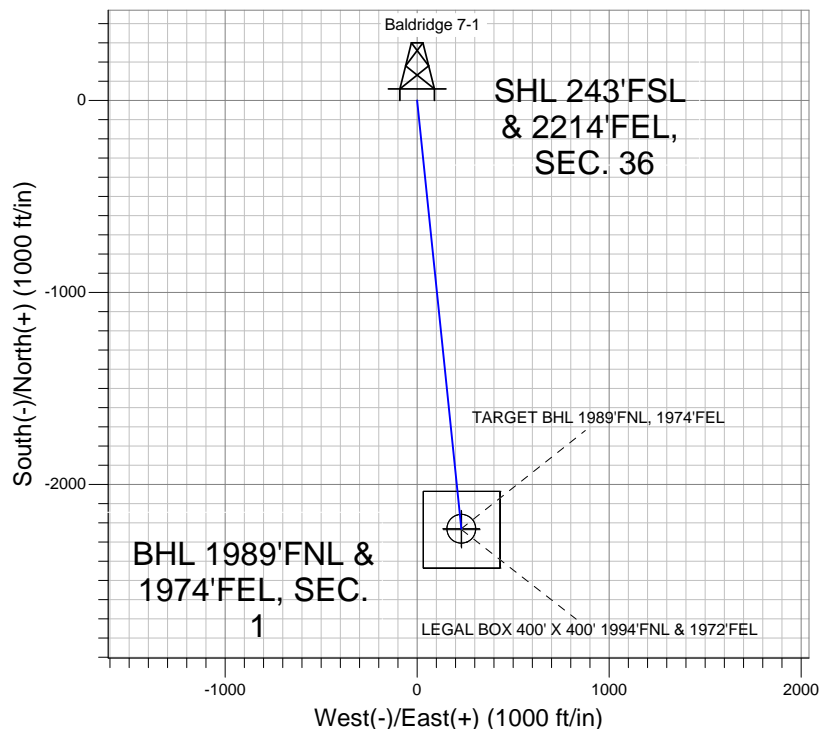
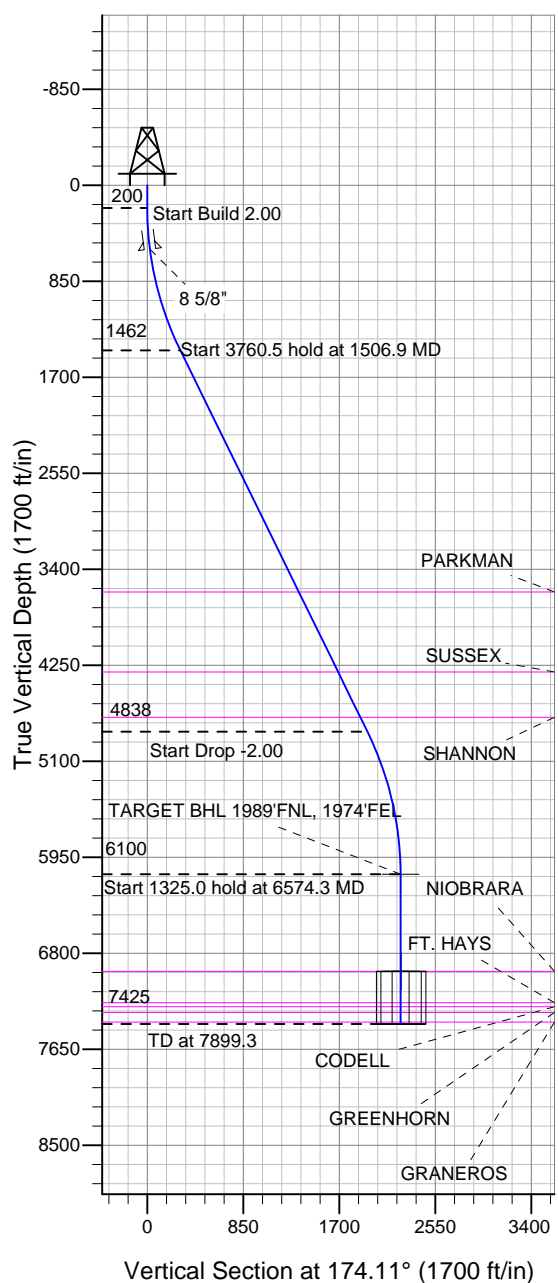


Well Name: Baldridge 7-1

Surface Location: Baldridge & Schneider Pad Sec.36-T7N-R67W
North American Datum 1983, US State Plane 1983Colorado Northern Zone
Ground Elevation: 4876.0

+N/-S	+E/-W	Northing	Easting	Latitude	Longitude	Slot
0.0	0.0	1434452.00	3183430.84	40.524098	-104.840172	
		Original Well Elev	WELL @ 4892.0ft (Original Well Elev)			

BAYSWATER EXPLORATION & PRODUCTION



Baldridge & Schneider Pad Sec.36-T7N-R67W
Baldridge 7-1
Plan #1 (4-12-12)
13:51, April 13 2012



Azimuths to True North
Magnetic North: 8.80°
Magnetic Field
Strength: 53100.7snT
Dip Angle: 67.11°
Date: 4/12/2012
Model: IGRF2010

WELLBORE TARGET DETAILS (LAT/LONG)

Name	TVD	+N/-S	+E/-W	Latitude	Longitude	Shape
TARGET BHL 1989'FNL, 1974'FEL	6100.0	-2230.7	229.9	40.517975	-104.839345	Point
LEGAL BOX 400' X 400' 1994'FNL & 1972'FEL	6960.0	-2235.7	231.9	40.517961	-104.839338	Rectangle (Sides: L400.0 W400.0)
TARGET CIRCLE 1989'FNL & 1974'FEL	6960.0	-2230.7	229.9	40.517975	-104.839345	Circle (Radius: 75.0)

SECTION DETAILS

Sec	MD	Inc	Azi	TVD	+N/-S	+E/-W	DLeg	TFace	VSec	Target
1	0.0	0.00	0.00	0.0	0.0	0.0	0.00	0.00	0.0	
2	200.0	0.00	0.00	200.0	0.0	0.0	0.00	0.00	0.0	
3	1506.9	26.14	174.11	1462.0	-291.4	30.0	2.00	174.11	293.0	
4	5267.4	26.14	174.11	4838.0	-1939.3	199.9	0.00	0.00	1949.6	
5	6574.3	0.00	0.00	6100.0	-2230.7	229.9	2.00	180.00	2242.5	TARGET BHL 1989'FNL, 1974'FEL
6	7899.3	0.00	0.00	7425.0	-2230.7	229.9	0.00	0.00	2242.5	



BAYSWATER EXPLORATION & PRODUCTION

SEC.36-T7N-R67W

Baldrige & Schneider Pad Sec.36-T7N-R67W

Baldrige 7-1

Wellbore #1

Plan: Plan #1 (4-12-12)

Standard Planning Report

13 April, 2012

Database:	Landmark	Local Co-ordinate Reference:	Well Baldridge 7-1
Company:	BAYSWATER EXPLORATION & PRODUCTION	TVD Reference:	WELL @ 4892.0ft (Original Well Elev)
Project:	SEC.36-T7N-R67W	MD Reference:	WELL @ 4892.0ft (Original Well Elev)
Site:	Baldridge & Schneider Pad Sec.36-T7N-R67W	North Reference:	True
Well:	Baldridge 7-1	Survey Calculation Method:	Minimum Curvature
Wellbore:	Wellbore #1		
Design:	Plan #1 (4-12-12)		

Project	SEC.36-T7N-R67W, Weld County, Colorado		
Map System:	US State Plane 1983	System Datum:	Mean Sea Level
Geo Datum:	North American Datum 1983		Using Well Reference Point
Map Zone:	Colorado Northern Zone		Using geodetic scale factor

Site						Baldridge & Schneider Pad Sec.36-T7N-R67W											
Site Position:						Northing:			1,434,452.01 ft			Latitude:			40.524098		
From:			Lat/Long			Easting:			3,183,430.84 ft			Longitude:			-104.840172		
Position Uncertainty:			0.0 ft			Slot Radius:			"			Grid Convergence:			0.43 °		

Well	Baldridge 7-1					
Well Position	+N-S	0.0 ft	Northing:	1,434,452.00 ft	Latitude:	40.524098
	+E-W	0.0 ft	Easting:	3,183,430.84 ft	Longitude:	-104.840172
Position Uncertainty		0.0 ft	Wellhead Elevation:	ft	Ground Level:	4,876.0 ft

Wellbore	Wellbore #1				
Magnetics	Model Name	Sample Date	Declination (°)	Dip Angle (°)	Field Strength (nT)
	IGRF2010	4/12/2012	8.81	67.11	53,101

Design	Plan #1 (4-12-12)			
Audit Notes:				
Version:	Phase:	PROTOTYPE	Tie On Depth:	0.0
Vertical Section:	Depth From (TVD) (ft)	+N/-S (ft)	+E/-W (ft)	Direction (°)
	0.0	0.0	0.0	174.11

Plan Sections										
Measured Depth (ft)	Inclination (°)	Azimuth (°)	Vertical Depth (ft)	+N/-S (ft)	+E/-W (ft)	Dogleg Rate (°/100ft)	Build Rate (°/100ft)	Turn Rate (°/100ft)	TFO (°)	Target
0.0	0.00	0.00	0.0	0.0	0.0	0.00	0.00	0.00	0.00	
200.0	0.00	0.00	200.0	0.0	0.0	0.00	0.00	0.00	0.00	
1,506.9	26.14	174.11	1,462.0	-291.4	30.0	2.00	2.00	0.00	174.11	
5,267.4	26.14	174.11	4,838.0	-1,939.3	199.9	0.00	0.00	0.00	0.00	
6,574.3	0.00	0.00	6,100.0	-2,230.7	229.9	2.00	-2.00	0.00	180.00	TARGET BHL 1989
7,899.3	0.00	0.00	7,425.0	-2,230.7	229.9	0.00	0.00	0.00	0.00	

Database:	Landmark	Local Co-ordinate Reference:	Well Baldrige 7-1
Company:	BAYSWATER EXPLORATION & PRODUCTION	TVD Reference:	WELL @ 4892.0ft (Original Well Elev)
Project:	SEC.36-T7N-R67W	MD Reference:	WELL @ 4892.0ft (Original Well Elev)
Site:	Baldrige & Schneider Pad Sec.36-T7N-R67W	North Reference:	True
Well:	Baldrige 7-1	Survey Calculation Method:	Minimum Curvature
Wellbore:	Wellbore #1		
Design:	Plan #1 (4-12-12)		

Planned Survey									
Measured Depth (ft)	Inclination (°)	Azimuth (°)	Vertical Depth (ft)	+N/-S (ft)	+E/-W (ft)	Vertical Section (ft)	Dogleg Rate (°/100ft)	Build Rate (°/100ft)	Turn Rate (°/100ft)
0.0	0.00	0.00	0.0	0.0	0.0	0.0	0.00	0.00	0.00
40.0	0.00	0.00	40.0	0.0	0.0	0.0	0.00	0.00	0.00
80.0	0.00	0.00	80.0	0.0	0.0	0.0	0.00	0.00	0.00
120.0	0.00	0.00	120.0	0.0	0.0	0.0	0.00	0.00	0.00
160.0	0.00	0.00	160.0	0.0	0.0	0.0	0.00	0.00	0.00
200.0	0.00	0.00	200.0	0.0	0.0	0.0	0.00	0.00	0.00
240.0	0.80	174.11	240.0	-0.3	0.0	0.3	2.00	2.00	0.00
280.0	1.60	174.11	280.0	-1.1	0.1	1.1	2.00	2.00	0.00
320.0	2.40	174.11	320.0	-2.5	0.3	2.5	2.00	2.00	0.00
360.0	3.20	174.11	359.9	-4.4	0.5	4.5	2.00	2.00	0.00
400.0	4.00	174.11	399.8	-6.9	0.7	7.0	2.00	2.00	0.00
440.0	4.80	174.11	439.7	-10.0	1.0	10.0	2.00	2.00	0.00
480.0	5.60	174.11	479.6	-13.6	1.4	13.7	2.00	2.00	0.00
520.0	6.40	174.11	519.3	-17.8	1.8	17.9	2.00	2.00	0.00
560.0	7.20	174.11	559.1	-22.5	2.3	22.6	2.00	2.00	0.00
566.0	7.32	174.11	565.0	-23.2	2.4	23.3	2.00	2.00	0.00
8 5/8"									
600.0	8.00	174.11	598.7	-27.7	2.9	27.9	2.00	2.00	0.00
640.0	8.80	174.11	638.3	-33.5	3.5	33.7	2.00	2.00	0.00
680.0	9.60	174.11	677.8	-39.9	4.1	40.1	2.00	2.00	0.00
720.0	10.40	174.11	717.1	-46.8	4.8	47.1	2.00	2.00	0.00
760.0	11.20	174.11	756.4	-54.3	5.6	54.6	2.00	2.00	0.00
800.0	12.00	174.11	795.6	-62.3	6.4	62.6	2.00	2.00	0.00
840.0	12.80	174.11	834.7	-70.8	7.3	71.2	2.00	2.00	0.00
880.0	13.60	174.11	873.6	-79.9	8.2	80.3	2.00	2.00	0.00
920.0	14.40	174.11	912.4	-89.5	9.2	90.0	2.00	2.00	0.00
960.0	15.20	174.11	951.1	-99.7	10.3	100.2	2.00	2.00	0.00
1,000.0	16.00	174.11	989.6	-110.4	11.4	111.0	2.00	2.00	0.00
1,040.0	16.80	174.11	1,028.0	-121.6	12.5	122.3	2.00	2.00	0.00
1,080.0	17.60	174.11	1,066.2	-133.4	13.7	134.1	2.00	2.00	0.00
1,120.0	18.40	174.11	1,104.3	-145.7	15.0	146.5	2.00	2.00	0.00
1,160.0	19.20	174.11	1,142.1	-158.5	16.3	159.3	2.00	2.00	0.00
1,200.0	20.00	174.11	1,179.8	-171.9	17.7	172.8	2.00	2.00	0.00
1,240.0	20.80	174.11	1,217.3	-185.7	19.1	186.7	2.00	2.00	0.00
1,280.0	21.60	174.11	1,254.6	-200.1	20.6	201.2	2.00	2.00	0.00
1,320.0	22.40	174.11	1,291.7	-215.0	22.2	216.2	2.00	2.00	0.00
1,360.0	23.20	174.11	1,328.6	-230.4	23.8	231.7	2.00	2.00	0.00
1,400.0	24.00	174.11	1,365.2	-246.4	25.4	247.7	2.00	2.00	0.00
1,440.0	24.80	174.11	1,401.6	-262.8	27.1	264.2	2.00	2.00	0.00
1,480.0	25.60	174.11	1,437.8	-279.7	28.8	281.2	2.00	2.00	0.00
1,506.9	26.14	174.11	1,462.0	-291.4	30.0	293.0	2.00	2.00	0.00
1,520.0	26.14	174.11	1,473.8	-297.2	30.6	298.7	0.00	0.00	0.00
1,560.0	26.14	174.11	1,509.7	-314.7	32.4	316.4	0.00	0.00	0.00
1,600.0	26.14	174.11	1,545.6	-332.2	34.2	334.0	0.00	0.00	0.00
1,640.0	26.14	174.11	1,581.5	-349.7	36.1	351.6	0.00	0.00	0.00
1,680.0	26.14	174.11	1,617.4	-367.3	37.9	369.2	0.00	0.00	0.00
1,720.0	26.14	174.11	1,653.3	-384.8	39.7	386.8	0.00	0.00	0.00
1,760.0	26.14	174.11	1,689.3	-402.3	41.5	404.5	0.00	0.00	0.00
1,800.0	26.14	174.11	1,725.2	-419.9	43.3	422.1	0.00	0.00	0.00
1,840.0	26.14	174.11	1,761.1	-437.4	45.1	439.7	0.00	0.00	0.00
1,880.0	26.14	174.11	1,797.0	-454.9	46.9	457.3	0.00	0.00	0.00
1,920.0	26.14	174.11	1,832.9	-472.4	48.7	474.9	0.00	0.00	0.00

Database:	Landmark	Local Co-ordinate Reference:	Well Baldridge 7-1
Company:	BAYSWATER EXPLORATION & PRODUCTION	TVD Reference:	WELL @ 4892.0ft (Original Well Elev)
Project:	SEC.36-T7N-R67W	MD Reference:	WELL @ 4892.0ft (Original Well Elev)
Site:	Baldridge & Schneider Pad Sec.36-T7N-R67W	North Reference:	True
Well:	Baldridge 7-1	Survey Calculation Method:	Minimum Curvature
Wellbore:	Wellbore #1		
Design:	Plan #1 (4-12-12)		

Planned Survey									
Measured Depth (ft)	Inclination (°)	Azimuth (°)	Vertical Depth (ft)	+N/-S (ft)	+E/-W (ft)	Vertical Section (ft)	Dogleg Rate (°/100ft)	Build Rate (°/100ft)	Turn Rate (°/100ft)
1,960.0	26.14	174.11	1,868.8	-490.0	50.5	492.6	0.00	0.00	0.00
2,000.0	26.14	174.11	1,904.7	-507.5	52.3	510.2	0.00	0.00	0.00
2,040.0	26.14	174.11	1,940.6	-525.0	54.1	527.8	0.00	0.00	0.00
2,080.0	26.14	174.11	1,976.5	-542.6	55.9	545.4	0.00	0.00	0.00
2,120.0	26.14	174.11	2,012.4	-560.1	57.7	563.1	0.00	0.00	0.00
2,160.0	26.14	174.11	2,048.4	-577.6	59.5	580.7	0.00	0.00	0.00
2,200.0	26.14	174.11	2,084.3	-595.1	61.3	598.3	0.00	0.00	0.00
2,240.0	26.14	174.11	2,120.2	-612.7	63.2	615.9	0.00	0.00	0.00
2,280.0	26.14	174.11	2,156.1	-630.2	65.0	633.5	0.00	0.00	0.00
2,320.0	26.14	174.11	2,192.0	-647.7	66.8	651.2	0.00	0.00	0.00
2,360.0	26.14	174.11	2,227.9	-665.3	68.6	668.8	0.00	0.00	0.00
2,400.0	26.14	174.11	2,263.8	-682.8	70.4	686.4	0.00	0.00	0.00
2,440.0	26.14	174.11	2,299.7	-700.3	72.2	704.0	0.00	0.00	0.00
2,480.0	26.14	174.11	2,335.6	-717.8	74.0	721.6	0.00	0.00	0.00
2,520.0	26.14	174.11	2,371.5	-735.4	75.8	739.3	0.00	0.00	0.00
2,560.0	26.14	174.11	2,407.4	-752.9	77.6	756.9	0.00	0.00	0.00
2,600.0	26.14	174.11	2,443.4	-770.4	79.4	774.5	0.00	0.00	0.00
2,640.0	26.14	174.11	2,479.3	-788.0	81.2	792.1	0.00	0.00	0.00
2,680.0	26.14	174.11	2,515.2	-805.5	83.0	809.8	0.00	0.00	0.00
2,720.0	26.14	174.11	2,551.1	-823.0	84.8	827.4	0.00	0.00	0.00
2,760.0	26.14	174.11	2,587.0	-840.5	86.6	845.0	0.00	0.00	0.00
2,800.0	26.14	174.11	2,622.9	-858.1	88.4	862.6	0.00	0.00	0.00
2,840.0	26.14	174.11	2,658.8	-875.6	90.3	880.2	0.00	0.00	0.00
2,880.0	26.14	174.11	2,694.7	-893.1	92.1	897.9	0.00	0.00	0.00
2,920.0	26.14	174.11	2,730.6	-910.7	93.9	915.5	0.00	0.00	0.00
2,960.0	26.14	174.11	2,766.5	-928.2	95.7	933.1	0.00	0.00	0.00
3,000.0	26.14	174.11	2,802.5	-945.7	97.5	950.7	0.00	0.00	0.00
3,040.0	26.14	174.11	2,838.4	-963.2	99.3	968.3	0.00	0.00	0.00
3,080.0	26.14	174.11	2,874.3	-980.8	101.1	986.0	0.00	0.00	0.00
3,120.0	26.14	174.11	2,910.2	-998.3	102.9	1,003.6	0.00	0.00	0.00
3,160.0	26.14	174.11	2,946.1	-1,015.8	104.7	1,021.2	0.00	0.00	0.00
3,200.0	26.14	174.11	2,982.0	-1,033.4	106.5	1,038.8	0.00	0.00	0.00
3,240.0	26.14	174.11	3,017.9	-1,050.9	108.3	1,056.5	0.00	0.00	0.00
3,280.0	26.14	174.11	3,053.8	-1,068.4	110.1	1,074.1	0.00	0.00	0.00
3,320.0	26.14	174.11	3,089.7	-1,085.9	111.9	1,091.7	0.00	0.00	0.00
3,360.0	26.14	174.11	3,125.6	-1,103.5	113.7	1,109.3	0.00	0.00	0.00
3,400.0	26.14	174.11	3,161.5	-1,121.0	115.5	1,126.9	0.00	0.00	0.00
3,440.0	26.14	174.11	3,197.5	-1,138.5	117.4	1,144.6	0.00	0.00	0.00
3,480.0	26.14	174.11	3,233.4	-1,156.1	119.2	1,162.2	0.00	0.00	0.00
3,520.0	26.14	174.11	3,269.3	-1,173.6	121.0	1,179.8	0.00	0.00	0.00
3,560.0	26.14	174.11	3,305.2	-1,191.1	122.8	1,197.4	0.00	0.00	0.00
3,600.0	26.14	174.11	3,341.1	-1,208.6	124.6	1,215.0	0.00	0.00	0.00
3,640.0	26.14	174.11	3,377.0	-1,226.2	126.4	1,232.7	0.00	0.00	0.00
3,680.0	26.14	174.11	3,412.9	-1,243.7	128.2	1,250.3	0.00	0.00	0.00
3,720.0	26.14	174.11	3,448.8	-1,261.2	130.0	1,267.9	0.00	0.00	0.00
3,760.0	26.14	174.11	3,484.7	-1,278.8	131.8	1,285.5	0.00	0.00	0.00
3,800.0	26.14	174.11	3,520.6	-1,296.3	133.6	1,303.1	0.00	0.00	0.00
3,840.0	26.14	174.11	3,556.5	-1,313.8	135.4	1,320.8	0.00	0.00	0.00
3,880.0	26.14	174.11	3,592.5	-1,331.3	137.2	1,338.4	0.00	0.00	0.00
3,888.4	26.14	174.11	3,600.0	-1,335.0	137.6	1,342.1	0.00	0.00	0.00
PARKMAN									
3,920.0	26.14	174.11	3,628.4	-1,348.9	139.0	1,356.0	0.00	0.00	0.00

Database:	Landmark	Local Co-ordinate Reference:	Well Baldridge 7-1
Company:	BAYSWATER EXPLORATION & PRODUCTION	TVD Reference:	WELL @ 4892.0ft (Original Well Elev)
Project:	SEC.36-T7N-R67W	MD Reference:	WELL @ 4892.0ft (Original Well Elev)
Site:	Baldridge & Schneider Pad Sec.36-T7N-R67W	North Reference:	True
Well:	Baldridge 7-1	Survey Calculation Method:	Minimum Curvature
Wellbore:	Wellbore #1		
Design:	Plan #1 (4-12-12)		

Planned Survey									
Measured Depth (ft)	Inclination (°)	Azimuth (°)	Vertical Depth (ft)	+N/-S (ft)	+E/-W (ft)	Vertical Section (ft)	Dogleg Rate (°/100ft)	Build Rate (°/100ft)	Turn Rate (°/100ft)
3,960.0	26.14	174.11	3,664.3	-1,366.4	140.8	1,373.6	0.00	0.00	0.00
4,000.0	26.14	174.11	3,700.2	-1,383.9	142.6	1,391.3	0.00	0.00	0.00
4,040.0	26.14	174.11	3,736.1	-1,401.4	144.5	1,408.9	0.00	0.00	0.00
4,080.0	26.14	174.11	3,772.0	-1,419.0	146.3	1,426.5	0.00	0.00	0.00
4,120.0	26.14	174.11	3,807.9	-1,436.5	148.1	1,444.1	0.00	0.00	0.00
4,160.0	26.14	174.11	3,843.8	-1,454.0	149.9	1,461.7	0.00	0.00	0.00
4,200.0	26.14	174.11	3,879.7	-1,471.6	151.7	1,479.4	0.00	0.00	0.00
4,240.0	26.14	174.11	3,915.6	-1,489.1	153.5	1,497.0	0.00	0.00	0.00
4,280.0	26.14	174.11	3,951.6	-1,506.6	155.3	1,514.6	0.00	0.00	0.00
4,320.0	26.14	174.11	3,987.5	-1,524.1	157.1	1,532.2	0.00	0.00	0.00
4,360.0	26.14	174.11	4,023.4	-1,541.7	158.9	1,549.8	0.00	0.00	0.00
4,400.0	26.14	174.11	4,059.3	-1,559.2	160.7	1,567.5	0.00	0.00	0.00
4,440.0	26.14	174.11	4,095.2	-1,576.7	162.5	1,585.1	0.00	0.00	0.00
4,480.0	26.14	174.11	4,131.1	-1,594.3	164.3	1,602.7	0.00	0.00	0.00
4,520.0	26.14	174.11	4,167.0	-1,611.8	166.1	1,620.3	0.00	0.00	0.00
4,560.0	26.14	174.11	4,202.9	-1,629.3	167.9	1,638.0	0.00	0.00	0.00
4,600.0	26.14	174.11	4,238.8	-1,646.8	169.8	1,655.6	0.00	0.00	0.00
4,640.0	26.14	174.11	4,274.7	-1,664.4	171.6	1,673.2	0.00	0.00	0.00
4,679.3	26.14	174.11	4,310.0	-1,681.6	173.3	1,690.5	0.00	0.00	0.00
SUSSEX									
4,680.0	26.14	174.11	4,310.6	-1,681.9	173.4	1,690.8	0.00	0.00	0.00
4,720.0	26.14	174.11	4,346.6	-1,699.4	175.2	1,708.4	0.00	0.00	0.00
4,760.0	26.14	174.11	4,382.5	-1,717.0	177.0	1,726.1	0.00	0.00	0.00
4,800.0	26.14	174.11	4,418.4	-1,734.5	178.8	1,743.7	0.00	0.00	0.00
4,840.0	26.14	174.11	4,454.3	-1,752.0	180.6	1,761.3	0.00	0.00	0.00
4,880.0	26.14	174.11	4,490.2	-1,769.5	182.4	1,778.9	0.00	0.00	0.00
4,920.0	26.14	174.11	4,526.1	-1,787.1	184.2	1,796.5	0.00	0.00	0.00
4,960.0	26.14	174.11	4,562.0	-1,804.6	186.0	1,814.2	0.00	0.00	0.00
5,000.0	26.14	174.11	4,597.9	-1,822.1	187.8	1,831.8	0.00	0.00	0.00
5,040.0	26.14	174.11	4,633.8	-1,839.7	189.6	1,849.4	0.00	0.00	0.00
5,080.0	26.14	174.11	4,669.7	-1,857.2	191.4	1,867.0	0.00	0.00	0.00
5,120.0	26.14	174.11	4,705.7	-1,874.7	193.2	1,884.6	0.00	0.00	0.00
5,124.8	26.14	174.11	4,710.0	-1,876.8	193.5	1,886.8	0.00	0.00	0.00
SHANNON									
5,160.0	26.14	174.11	4,741.6	-1,892.2	195.0	1,902.3	0.00	0.00	0.00
5,200.0	26.14	174.11	4,777.5	-1,909.8	196.9	1,919.9	0.00	0.00	0.00
5,240.0	26.14	174.11	4,813.4	-1,927.3	198.7	1,937.5	0.00	0.00	0.00
5,267.4	26.14	174.11	4,838.0	-1,939.3	199.9	1,949.6	0.00	0.00	0.00
5,280.0	25.89	174.11	4,849.3	-1,944.8	200.5	1,955.1	2.00	-2.00	0.00
5,320.0	25.09	174.11	4,885.4	-1,961.9	202.2	1,972.3	2.00	-2.00	0.00
5,360.0	24.29	174.11	4,921.8	-1,978.5	203.9	1,989.0	2.00	-2.00	0.00
5,400.0	23.49	174.11	4,958.3	-1,994.7	205.6	2,005.2	2.00	-2.00	0.00
5,440.0	22.69	174.11	4,995.1	-2,010.3	207.2	2,020.9	2.00	-2.00	0.00
5,480.0	21.89	174.11	5,032.1	-2,025.3	208.8	2,036.1	2.00	-2.00	0.00
5,520.0	21.09	174.11	5,069.4	-2,039.9	210.3	2,050.7	2.00	-2.00	0.00
5,560.0	20.29	174.11	5,106.8	-2,054.0	211.7	2,064.9	2.00	-2.00	0.00
5,600.0	19.49	174.11	5,144.4	-2,067.5	213.1	2,078.5	2.00	-2.00	0.00
5,640.0	18.69	174.11	5,182.2	-2,080.5	214.5	2,091.5	2.00	-2.00	0.00
5,680.0	17.89	174.11	5,220.2	-2,093.0	215.7	2,104.1	2.00	-2.00	0.00
5,720.0	17.09	174.11	5,258.3	-2,105.0	217.0	2,116.1	2.00	-2.00	0.00
5,760.0	16.29	174.11	5,296.6	-2,116.4	218.1	2,127.6	2.00	-2.00	0.00
5,800.0	15.49	174.11	5,335.1	-2,127.3	219.3	2,138.5	2.00	-2.00	0.00

Database:	Landmark	Local Co-ordinate Reference:	Well Baldridge 7-1
Company:	BAYSWATER EXPLORATION & PRODUCTION	TVD Reference:	WELL @ 4892.0ft (Original Well Elev)
Project:	SEC.36-T7N-R67W	MD Reference:	WELL @ 4892.0ft (Original Well Elev)
Site:	Baldridge & Schneider Pad Sec.36-T7N-R67W	North Reference:	True
Well:	Baldridge 7-1	Survey Calculation Method:	Minimum Curvature
Wellbore:	Wellbore #1		
Design:	Plan #1 (4-12-12)		

Planned Survey									
Measured Depth (ft)	Inclination (°)	Azimuth (°)	Vertical Depth (ft)	+N/-S (ft)	+E/-W (ft)	Vertical Section (ft)	Dogleg Rate (°/100ft)	Build Rate (°/100ft)	Turn Rate (°/100ft)
5,840.0	14.69	174.11	5,373.7	-2,137.6	220.3	2,149.0	2.00	-2.00	0.00
5,880.0	13.89	174.11	5,412.5	-2,147.4	221.4	2,158.8	2.00	-2.00	0.00
5,920.0	13.09	174.11	5,451.4	-2,156.7	222.3	2,168.1	2.00	-2.00	0.00
5,960.0	12.29	174.11	5,490.4	-2,165.5	223.2	2,176.9	2.00	-2.00	0.00
6,000.0	11.49	174.11	5,529.6	-2,173.7	224.1	2,185.2	2.00	-2.00	0.00
6,040.0	10.69	174.11	5,568.8	-2,181.3	224.8	2,192.9	2.00	-2.00	0.00
6,080.0	9.89	174.11	5,608.2	-2,188.4	225.6	2,200.0	2.00	-2.00	0.00
6,120.0	9.09	174.11	5,647.6	-2,195.0	226.2	2,206.6	2.00	-2.00	0.00
6,160.0	8.29	174.11	5,687.2	-2,201.0	226.9	2,212.6	2.00	-2.00	0.00
6,200.0	7.49	174.11	5,726.8	-2,206.4	227.4	2,218.1	2.00	-2.00	0.00
6,240.0	6.69	174.11	5,766.5	-2,211.3	227.9	2,223.1	2.00	-2.00	0.00
6,280.0	5.89	174.11	5,806.2	-2,215.7	228.4	2,227.4	2.00	-2.00	0.00
6,320.0	5.09	174.11	5,846.1	-2,219.5	228.8	2,231.3	2.00	-2.00	0.00
6,360.0	4.29	174.11	5,885.9	-2,222.8	229.1	2,234.5	2.00	-2.00	0.00
6,400.0	3.49	174.11	5,925.8	-2,225.4	229.4	2,237.2	2.00	-2.00	0.00
6,440.0	2.69	174.11	5,965.8	-2,227.6	229.6	2,239.4	2.00	-2.00	0.00
6,480.0	1.89	174.11	6,005.7	-2,229.2	229.8	2,241.0	2.00	-2.00	0.00
6,520.0	1.09	174.11	6,045.7	-2,230.2	229.9	2,242.0	2.00	-2.00	0.00
6,560.0	0.29	174.11	6,085.7	-2,230.7	229.9	2,242.5	2.00	-2.00	0.00
6,574.3	0.00	0.00	6,100.0	-2,230.7	229.9	2,242.5	2.00	-2.00	0.00
TARGET BHL 1989'FNL, 1974'FEL									
6,600.0	0.00	0.00	6,125.7	-2,230.7	229.9	2,242.5	0.00	0.00	0.00
6,640.0	0.00	0.00	6,165.7	-2,230.7	229.9	2,242.5	0.00	0.00	0.00
6,680.0	0.00	0.00	6,205.7	-2,230.7	229.9	2,242.5	0.00	0.00	0.00
6,720.0	0.00	0.00	6,245.7	-2,230.7	229.9	2,242.5	0.00	0.00	0.00
6,760.0	0.00	0.00	6,285.7	-2,230.7	229.9	2,242.5	0.00	0.00	0.00
6,800.0	0.00	0.00	6,325.7	-2,230.7	229.9	2,242.5	0.00	0.00	0.00
6,840.0	0.00	0.00	6,365.7	-2,230.7	229.9	2,242.5	0.00	0.00	0.00
6,880.0	0.00	0.00	6,405.7	-2,230.7	229.9	2,242.5	0.00	0.00	0.00
6,920.0	0.00	0.00	6,445.7	-2,230.7	229.9	2,242.5	0.00	0.00	0.00
6,960.0	0.00	0.00	6,485.7	-2,230.7	229.9	2,242.5	0.00	0.00	0.00
7,000.0	0.00	0.00	6,525.7	-2,230.7	229.9	2,242.5	0.00	0.00	0.00
7,040.0	0.00	0.00	6,565.7	-2,230.7	229.9	2,242.5	0.00	0.00	0.00
7,080.0	0.00	0.00	6,605.7	-2,230.7	229.9	2,242.5	0.00	0.00	0.00
7,120.0	0.00	0.00	6,645.7	-2,230.7	229.9	2,242.5	0.00	0.00	0.00
7,160.0	0.00	0.00	6,685.7	-2,230.7	229.9	2,242.5	0.00	0.00	0.00
7,200.0	0.00	0.00	6,725.7	-2,230.7	229.9	2,242.5	0.00	0.00	0.00
7,240.0	0.00	0.00	6,765.7	-2,230.7	229.9	2,242.5	0.00	0.00	0.00
7,280.0	0.00	0.00	6,805.7	-2,230.7	229.9	2,242.5	0.00	0.00	0.00
7,320.0	0.00	0.00	6,845.7	-2,230.7	229.9	2,242.5	0.00	0.00	0.00
7,360.0	0.00	0.00	6,885.7	-2,230.7	229.9	2,242.5	0.00	0.00	0.00
7,400.0	0.00	0.00	6,925.7	-2,230.7	229.9	2,242.5	0.00	0.00	0.00
7,434.3	0.00	0.00	6,960.0	-2,230.7	229.9	2,242.5	0.00	0.00	0.00
NIOBRARA - LEGAL BOX 400' X 400' 1994'FNL & 1972'FEL - TARGET CIRCLE 1989'FNL & 1974'FEL									
7,440.0	0.00	0.00	6,965.7	-2,230.7	229.9	2,242.5	0.00	0.00	0.00
7,480.0	0.00	0.00	7,005.7	-2,230.7	229.9	2,242.5	0.00	0.00	0.00
7,520.0	0.00	0.00	7,045.7	-2,230.7	229.9	2,242.5	0.00	0.00	0.00
7,560.0	0.00	0.00	7,085.7	-2,230.7	229.9	2,242.5	0.00	0.00	0.00
7,600.0	0.00	0.00	7,125.7	-2,230.7	229.9	2,242.5	0.00	0.00	0.00
7,640.0	0.00	0.00	7,165.7	-2,230.7	229.9	2,242.5	0.00	0.00	0.00
7,680.0	0.00	0.00	7,205.7	-2,230.7	229.9	2,242.5	0.00	0.00	0.00
7,710.3	0.00	0.00	7,236.0	-2,230.7	229.9	2,242.5	0.00	0.00	0.00

Database:	Landmark	Local Co-ordinate Reference:	Well Baldridge 7-1
Company:	BAYSWATER EXPLORATION & PRODUCTION	TVD Reference:	WELL @ 4892.0ft (Original Well Elev)
Project:	SEC.36-T7N-R67W	MD Reference:	WELL @ 4892.0ft (Original Well Elev)
Site:	Baldridge & Schneider Pad Sec.36-T7N-R67W	North Reference:	True
Well:	Baldridge 7-1	Survey Calculation Method:	Minimum Curvature
Wellbore:	Wellbore #1		
Design:	Plan #1 (4-12-12)		

Planned Survey										
Measured Depth (ft)	Inclination (°)	Azimuth (°)	Vertical Depth (ft)	+N/-S (ft)	+E/-W (ft)	Vertical Section (ft)	Dogleg Rate (°/100ft)	Build Rate (°/100ft)	Turn Rate (°/100ft)	
FT. HAYS										
7,720.0	0.00	0.00	7,245.7	-2,230.7	229.9	2,242.5	0.00	0.00	0.00	
7,746.3	0.00	0.00	7,272.0	-2,230.7	229.9	2,242.5	0.00	0.00	0.00	
CODELL										
7,760.0	0.00	0.00	7,285.7	-2,230.7	229.9	2,242.5	0.00	0.00	0.00	
7,798.3	0.00	0.00	7,324.0	-2,230.7	229.9	2,242.5	0.00	0.00	0.00	
GREENHORN										
7,800.0	0.00	0.00	7,325.7	-2,230.7	229.9	2,242.5	0.00	0.00	0.00	
7,840.0	0.00	0.00	7,365.7	-2,230.7	229.9	2,242.5	0.00	0.00	0.00	
7,880.0	0.00	0.00	7,405.7	-2,230.7	229.9	2,242.5	0.00	0.00	0.00	
7,882.3	0.00	0.00	7,408.0	-2,230.7	229.9	2,242.5	0.00	0.00	0.00	
GRANEROS										
7,899.3	0.00	0.00	7,425.0	-2,230.7	229.9	2,242.5	0.00	0.00	0.00	

Targets										
Target Name	Dip Angle (°)	Dip Dir. (°)	TVD (ft)	+N/-S (ft)	+E/-W (ft)	Northing (ft)	Easting (ft)	Latitude	Longitude	
- hit/miss target										
- Shape										
LEGAL BOX 400' X 400'	0.00	0.00	6,960.0	-2,235.7	231.9	1,432,218.17	3,183,679.36	40.517961	-104.839338	
- plan misses target center by 5.3ft at 7434.3ft MD (6960.0 TVD, -2230.7 N, 229.9 E)										
- Rectangle (sides W400.0 H400.0 D465.0)										
TARGET CIRCLE 19'	0.00	0.00	6,960.0	-2,230.7	229.9	1,432,223.13	3,183,677.36	40.517975	-104.839345	
- plan hits target center										
- Circle (radius 75.0)										
TARGET BHL 1989'F	0.00	0.00	6,100.0	-2,230.7	229.9	1,432,223.13	3,183,677.36	40.517975	-104.839345	
- plan hits target center										
- Point										

Casing Points						
Measured Depth (ft)	Vertical Depth (ft)	Name	Casing Diameter (")	Hole Diameter (")		
566.0	565.0	8 5/8"	8-5/8	12-1/4		

Database:	Landmark	Local Co-ordinate Reference:	Well Baldrige 7-1
Company:	BAYSWATER EXPLORATION & PRODUCTION	TVD Reference:	WELL @ 4892.0ft (Original Well Elev)
Project:	SEC.36-T7N-R67W	MD Reference:	WELL @ 4892.0ft (Original Well Elev)
Site:	Baldrige & Schneider Pad Sec.36-T7N-R67W	North Reference:	True
Well:	Baldrige 7-1	Survey Calculation Method:	Minimum Curvature
Wellbore:	Wellbore #1		
Design:	Plan #1 (4-12-12)		

Formations						
Measured Depth (ft)	Vertical Depth (ft)	Name	Lithology	Dip (°)	Dip Direction (°)	
3,888.4	3,600.0	PARKMAN		0.00		
4,679.3	4,310.0	SUSSEX		0.00		
5,124.8	4,710.0	SHANNON		0.00		
7,434.3	6,960.0	NIOBRARA		0.00		
7,710.3	7,236.0	FT. HAYS		0.00		
7,746.3	7,272.0	CODELL		0.00		
7,798.3	7,324.0	GREENHORN		0.00		
7,882.3	7,408.0	GRANEROS		0.00		



BAYSWATER EXPLORATION & PRODUCTION

SEC.36-T7N-R67W

Baldrige & Schneider Pad Sec.36-T7N-R67W

Baldrige 7-1

Wellbore #1

Plan #1 (4-12-12)

Anticollision Report

13 April, 2012

Company:	BAYSWATER EXPLORATION & PRODUCTION	Local Co-ordinate Reference:	Well Baldridge 7-1
Project:	SEC.36-T7N-R67W	TVD Reference:	WELL @ 4892.0ft (Original Well Elev)
Reference Site:	Baldridge & Schneider Pad Sec.36-T7N-R67W	MD Reference:	WELL @ 4892.0ft (Original Well Elev)
Site Error:	0.0ft	North Reference:	True
Reference Well:	Baldridge 7-1	Survey Calculation Method:	Minimum Curvature
Well Error:	0.0ft	Output errors are at	2.00 sigma
Reference Wellbore	Wellbore #1	Database:	Landmark
Reference Design:	Plan #1 (4-12-12)	Offset TVD Reference:	Offset Datum

Reference	Plan #1 (4-12-12)		
Filter type:	NO GLOBAL FILTER: Using user defined selection & filtering criteria		
Interpolation Method:	MD Interval 100.0ft	Error Model:	ISCWSA
Depth Range:	Unlimited	Scan Method:	Closest Approach 3D
Results Limited by:	Maximum center-center distance of 10,000.0ft	Error Surface:	Elliptical Conic
Warning Levels Evaluated at:	2.00 Sigma		

Survey Tool Program	Date 4/13/2012			
From (ft)	To (ft)	Survey (Wellbore)	Tool Name	Description
0.0	7,899.3	Plan #1 (4-12-12) (Wellbore #1)	MWD	MWD - Standard

Summary						
Site Name	Reference Measured Depth (ft)	Offset Measured Depth (ft)	Distance Between Centres (ft)	Distance Between Ellipses (ft)	Separation Factor	Warning
Offset Well - Wellbore - Design						
Baldridge & Schneider Pad Sec.36-T7N-R67W						
Baldridge 2-1 - Wellbore #1 - Plan #1 (4-12-12)	294.9	294.9	15.2	14.1	14.106	CC
Baldridge 2-1 - Wellbore #1 - Plan #1 (4-12-12)	300.0	300.0	15.2	14.1	13.829	ES
Baldridge 2-1 - Wellbore #1 - Plan #1 (4-12-12)	500.0	499.5	20.8	18.8	10.403	SF

Offset Design												Offset Site Error:	0.0 ft
Survey Program: 0-MWD												Offset Well Error:	0.0 ft
Reference		Offset		Semi Major Axis			Distance						
Measured Depth	Vertical Depth	Measured Depth	Vertical Depth	Reference	Offset	Highside Toolface	Offset Wellbore Centre		Between Centres	Between Ellipses	Minimum Separation	Separation Factor	Warning
Depth (ft)	Depth (ft)	Depth (ft)	Depth (ft)	(ft)	(ft)	(°)	+N/-S (ft)	+E/-W (ft)	(ft)	(ft)	(ft)		
0.0	0.0	0.0	0.0	0.0	0.0	90.02	0.0	15.3	15.3	15.3	0.00	N/A	
100.0	100.0	100.0	100.0	0.1	0.1	90.02	0.0	15.3	15.3	15.1	0.22	68.029	
200.0	200.0	200.0	200.0	0.3	0.3	90.02	0.0	15.3	15.3	14.6	0.67	22.676	
294.9	294.9	294.9	294.9	0.5	0.6	-90.00	0.0	15.3	15.2	14.1	1.08	14.106	CC
300.0	300.0	300.0	300.0	0.5	0.6	-90.65	0.0	15.3	15.2	14.1	1.10	13.829	ES
400.0	399.8	399.8	399.8	0.8	0.8	-109.53	0.0	15.3	16.1	14.6	1.53	10.531	
500.0	499.5	499.5	499.5	1.0	1.0	-132.72	0.0	15.3	20.8	18.8	1.99	10.403	SF
600.0	598.7	598.7	598.7	1.3	1.2	-149.72	0.0	15.3	30.4	27.9	2.46	12.356	
700.0	697.5	697.5	697.5	1.6	1.5	-159.79	0.0	15.3	44.6	41.7	2.92	15.284	
800.0	795.6	795.6	795.6	2.0	1.7	-165.71	0.0	15.3	62.9	59.5	3.38	18.609	
900.0	893.1	895.7	895.7	2.4	1.9	-169.11	-1.6	15.7	83.4	79.6	3.82	21.861	
1,000.0	989.6	996.6	996.5	3.0	2.1	-170.90	-6.6	16.9	104.2	100.0	4.23	24.609	
1,100.0	1,085.3	1,098.3	1,097.8	3.5	2.3	-171.86	-15.1	19.0	125.1	120.4	4.67	26.774	
1,200.0	1,179.8	1,200.8	1,199.5	4.1	2.5	-172.35	-27.2	21.9	146.0	140.9	5.13	28.450	
1,300.0	1,273.2	1,304.0	1,301.4	4.8	2.8	-172.54	-43.0	25.7	167.0	161.4	5.62	29.718	
1,400.0	1,365.2	1,407.4	1,402.9	5.6	3.1	-172.52	-62.3	30.5	187.9	181.8	6.13	30.678	
1,500.0	1,455.8	1,504.7	1,498.1	6.4	3.4	-172.51	-81.9	35.2	210.8	204.2	6.66	31.667	
1,600.0	1,545.6	1,601.6	1,592.9	7.2	3.8	-172.61	-101.5	40.0	235.6	228.4	7.25	32.522	
1,700.0	1,635.4	1,698.5	1,687.6	8.1	4.2	-172.69	-121.0	44.7	260.4	252.6	7.85	33.189	
1,800.0	1,725.2	1,795.4	1,782.4	9.0	4.6	-172.76	-140.5	49.5	285.2	276.8	8.46	33.733	
1,900.0	1,814.9	1,892.2	1,877.2	9.8	5.0	-172.82	-160.0	54.2	310.1	301.0	9.07	34.170	
2,000.0	1,904.7	1,989.1	1,971.9	10.7	5.4	-172.87	-179.5	59.0	334.9	325.2	9.70	34.534	

CC - Min centre to center distance or convergent point, SF - min separation factor, ES - min ellipse separation

Company:	BAYSWATER EXPLORATION & PRODUCTION	Local Co-ordinate Reference:	Well Baldridge 7-1
Project:	SEC.36-T7N-R67W	TVD Reference:	WELL @ 4892.0ft (Original Well Elev)
Reference Site:	Baldridge & Schneider Pad Sec.36-T7N-R67W	MD Reference:	WELL @ 4892.0ft (Original Well Elev)
Site Error:	0.0ft	North Reference:	True
Reference Well:	Baldridge 7-1	Survey Calculation Method:	Minimum Curvature
Well Error:	0.0ft	Output errors are at	2.00 sigma
Reference Wellbore	Wellbore #1	Database:	Landmark
Reference Design:	Plan #1 (4-12-12)	Offset TVD Reference:	Offset Datum

Offset Design		Baldridge & Schneider Pad Sec.36-T7N-R67W - Baldridge 2-1 - Wellbore #1 - Plan #1 (4-12-12)										Offset Site Error:		0.0 ft
Survey Program: 0-MWD												Offset Well Error:		0.0 ft
Reference		Offset		Semi Major Axis			Distance							Warning
Measured Depth (ft)	Vertical Depth (ft)	Measured Depth (ft)	Vertical Depth (ft)	Reference (ft)	Offset (ft)	Highside Toolface (°)	Offset Wellbore Centre +N/-S (ft)	+E/-W (ft)	Between Centres (ft)	Between Ellipses (ft)	Minimum Separation (ft)	Separation Factor		
2,100.0	1,994.5	2,086.0	2,066.7	11.5	5.8	-172.91	-199.0	63.7	359.7	349.4	10.32	34.839		
2,200.0	2,084.3	2,182.9	2,161.5	12.4	6.2	-172.95	-218.6	68.5	384.5	373.5	10.96	35.096		
2,300.0	2,174.0	2,279.7	2,256.2	13.3	6.6	-172.99	-238.1	73.2	409.3	397.7	11.59	35.317		
2,400.0	2,263.8	2,376.6	2,351.0	14.1	7.1	-173.01	-257.6	78.0	434.1	421.9	12.23	35.506		
2,500.0	2,353.6	2,473.5	2,445.8	15.0	7.5	-173.04	-277.1	82.7	458.9	446.1	12.87	35.670		
2,600.0	2,443.4	2,570.3	2,540.5	15.9	7.9	-173.06	-296.6	87.5	483.7	470.2	13.51	35.813		
2,700.0	2,533.1	2,667.2	2,635.3	16.8	8.4	-173.08	-316.1	92.2	508.5	494.4	14.15	35.939		
2,800.0	2,622.9	2,764.1	2,730.1	17.6	8.8	-173.10	-335.7	97.0	533.4	518.6	14.79	36.051		
2,900.0	2,712.7	2,861.0	2,824.8	18.5	9.2	-173.12	-355.2	101.7	558.2	542.7	15.44	36.150		
3,000.0	2,802.5	2,957.8	2,919.6	19.4	9.7	-173.14	-374.7	106.5	583.0	566.9	16.09	36.238		
3,100.0	2,892.2	3,054.7	3,014.4	20.2	10.1	-173.15	-394.2	111.2	607.8	591.1	16.74	36.317		
3,200.0	2,982.0	3,151.6	3,109.1	21.1	10.5	-173.17	-413.7	116.0	632.6	615.2	17.39	36.388		
3,300.0	3,071.8	3,248.5	3,203.9	22.0	11.0	-173.18	-433.2	120.7	657.4	639.4	18.03	36.453		
3,400.0	3,161.5	3,345.3	3,298.7	22.9	11.4	-173.19	-452.8	125.5	682.2	663.5	18.69	36.511		
3,500.0	3,251.3	3,442.2	3,393.4	23.7	11.8	-173.20	-472.3	130.2	707.0	687.7	19.34	36.564		
3,600.0	3,341.1	3,539.1	3,488.2	24.6	12.3	-173.21	-491.8	135.0	731.9	711.9	19.99	36.613		
3,700.0	3,430.9	3,635.9	3,583.0	25.5	12.7	-173.22	-511.3	139.7	756.7	736.0	20.64	36.658		
3,800.0	3,520.6	3,732.8	3,677.7	26.4	13.2	-173.23	-530.8	144.5	781.5	760.2	21.29	36.698		
3,900.0	3,610.4	3,829.7	3,772.5	27.2	13.6	-173.24	-550.3	149.2	806.3	784.3	21.95	36.736		
4,000.0	3,700.2	3,926.6	3,867.3	28.1	14.0	-173.24	-569.9	154.0	831.1	808.5	22.60	36.771		
4,100.0	3,790.0	4,023.4	3,962.0	29.0	14.5	-173.25	-589.4	158.7	855.9	832.7	23.26	36.803		
4,200.0	3,879.7	4,120.3	4,056.8	29.9	14.9	-173.26	-608.9	163.5	880.7	856.8	23.91	36.833		
4,300.0	3,969.5	4,217.2	4,151.6	30.7	15.4	-173.26	-628.4	168.2	905.5	881.0	24.57	36.860		
4,400.0	4,059.3	4,314.1	4,246.3	31.6	15.8	-173.27	-647.9	172.9	930.4	905.1	25.22	36.886		
4,500.0	4,149.1	4,410.9	4,341.1	32.5	16.3	-173.28	-667.4	177.7	955.2	929.3	25.88	36.910		
4,600.0	4,238.8	4,507.8	4,435.9	33.4	16.7	-173.28	-687.0	182.4	980.0	953.4	26.53	36.932		
4,700.0	4,328.6	4,604.7	4,530.6	34.2	17.1	-173.29	-706.5	187.2	1,004.8	977.6	27.19	36.953		
4,800.0	4,418.4	4,701.5	4,625.4	35.1	17.6	-173.29	-726.0	191.9	1,029.6	1,001.8	27.85	36.973		
4,900.0	4,508.2	4,798.4	4,720.2	36.0	18.0	-173.30	-745.5	196.7	1,054.4	1,025.9	28.50	36.991		
5,000.0	4,597.9	4,895.3	4,814.9	36.9	18.5	-173.30	-765.0	201.4	1,079.2	1,050.1	29.16	37.008		
5,100.0	4,687.7	4,992.2	4,909.7	37.7	18.9	-173.31	-784.5	206.2	1,104.0	1,074.2	29.82	37.025		
5,200.0	4,777.5	5,089.0	5,004.5	38.6	19.4	-173.31	-804.1	210.9	1,128.9	1,098.4	30.48	37.040		
5,300.0	4,867.3	5,186.0	5,099.3	39.4	19.8	-173.33	-823.6	215.7	1,153.5	1,122.3	31.17	37.012		
5,400.0	4,958.3	5,283.5	5,194.7	40.0	20.2	-173.37	-843.2	220.5	1,175.5	1,143.6	31.88	36.878		
5,500.0	5,050.7	5,356.8	5,266.5	40.6	20.5	-173.40	-857.4	223.9	1,195.1	1,162.6	32.45	36.833		
5,600.0	5,144.4	5,426.6	5,335.3	41.1	20.7	-173.44	-869.2	226.8	1,213.5	1,180.6	32.95	36.833		
5,700.0	5,239.2	5,500.0	5,407.9	41.6	20.9	-173.47	-879.9	229.4	1,230.9	1,197.5	33.40	36.855		
5,800.0	5,335.1	5,565.8	5,473.1	42.0	21.0	-173.52	-887.9	231.3	1,247.1	1,213.3	33.77	36.931		
5,900.0	5,431.9	5,635.1	5,542.1	42.4	21.2	-173.56	-894.8	233.0	1,262.3	1,228.2	34.09	37.028		
6,000.0	5,529.6	5,700.0	5,606.8	42.7	21.3	-173.61	-899.7	234.2	1,276.3	1,242.0	34.34	37.165		
6,100.0	5,627.9	5,773.5	5,680.2	43.0	21.4	-173.66	-903.6	235.2	1,289.2	1,254.7	34.55	37.319		
6,200.0	5,726.8	5,842.5	5,749.2	43.3	21.5	-173.71	-905.6	235.7	1,301.0	1,266.3	34.69	37.508		
6,300.0	5,826.1	5,919.5	5,826.1	43.5	21.6	-173.77	-906.1	235.8	1,311.6	1,276.8	34.78	37.710		
6,400.0	5,925.8	6,019.2	5,925.8	43.6	21.7	-173.83	-906.1	235.8	1,319.4	1,284.6	34.85	37.859		
6,500.0	6,025.7	6,119.1	6,025.7	43.8	21.8	-173.86	-906.1	235.8	1,323.7	1,288.8	34.87	37.958		
6,600.0	6,125.7	6,219.1	6,125.7	43.8	22.0	0.25	-906.1	235.8	1,324.7	1,289.7	34.94	37.911		
6,700.0	6,225.7	6,319.1	6,225.7	43.9	22.1	0.25	-906.1	235.8	1,324.7	1,289.5	35.22	37.608		
6,800.0	6,325.7	6,419.1	6,325.7	43.9	22.2	0.25	-906.1	235.8	1,324.7	1,289.2	35.51	37.307		
6,900.0	6,425.7	6,519.1	6,425.7	44.0	22.3	0.25	-906.1	235.8	1,324.7	1,288.9	35.80	37.007		
7,000.0	6,525.7	6,619.1	6,525.7	44.0	22.4	0.25	-906.1	235.8	1,324.7	1,288.6	36.09	36.708		
7,100.0	6,625.7	6,719.1	6,625.7	44.1	22.5	0.25	-906.1	235.8	1,324.7	1,288.3	36.38	36.411		

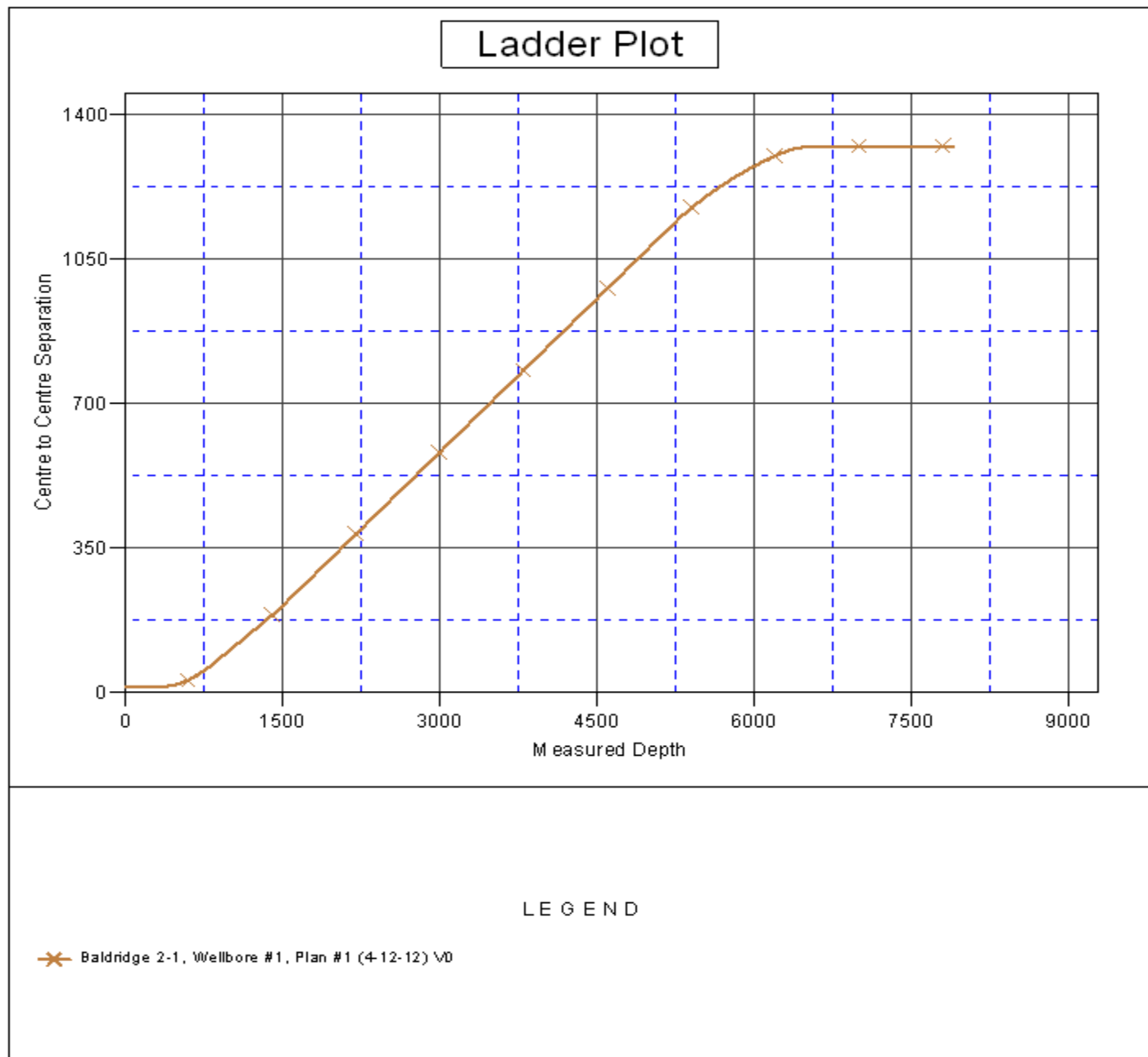
CC - Min centre to center distance or convergent point, SF - min separation factor, ES - min ellipse separation

Company:	BAYSWATER EXPLORATION & PRODUCTION	Local Co-ordinate Reference:	Well Baldrige 7-1
Project:	SEC.36-T7N-R67W	TVD Reference:	WELL @ 4892.0ft (Original Well Elev)
Reference Site:	Baldrige & Schneider Pad Sec.36-T7N-R67W	MD Reference:	WELL @ 4892.0ft (Original Well Elev)
Site Error:	0.0ft	North Reference:	True
Reference Well:	Baldrige 7-1	Survey Calculation Method:	Minimum Curvature
Well Error:	0.0ft	Output errors are at	2.00 sigma
Reference Wellbore	Wellbore #1	Database:	Landmark
Reference Design:	Plan #1 (4-12-12)	Offset TVD Reference:	Offset Datum

Offset Design													Baldridge & Schneider Pad Sec.36-T7N-R67W - Baldridge 2-1 - Wellbore #1 - Plan #1 (4-12-12)		Offset Site Error:		0.0 ft	
Survey Program: 0-MWD															Offset Well Error:		0.0 ft	
Reference		Offset		Semi Major Axis			Distance							Warning				
Measured Depth	Vertical Depth	Measured Depth	Vertical Depth	Reference	Offset	Highside Toolface	Offset Wellbore Centre		Between Centres	Between Ellipses	Minimum Separation	Separation Factor						
(ft)	(ft)	(ft)	(ft)	(ft)	(ft)	(°)	+N/-S (ft)	+E/-W (ft)	(ft)	(ft)	(ft)							
7,200.0	6,725.7	6,819.1	6,725.7	44.1	22.6	0.25	-906.1	235.8	1,324.7	1,288.0	36.68	36.116						
7,300.0	6,825.7	6,919.1	6,825.7	44.2	22.8	0.25	-906.1	235.8	1,324.7	1,287.7	36.98	35.822						
7,400.0	6,925.7	7,019.1	6,925.7	44.3	22.9	0.25	-906.1	235.8	1,324.7	1,287.4	37.28	35.531						
7,500.0	7,025.7	7,119.1	7,025.7	44.3	23.0	0.25	-906.1	235.8	1,324.7	1,287.1	37.59	35.242						
7,600.0	7,125.7	7,219.1	7,125.7	44.4	23.1	0.25	-906.1	235.8	1,324.7	1,286.8	37.90	34.955						
7,700.0	7,225.7	7,319.1	7,225.7	44.4	23.2	0.25	-906.1	235.8	1,324.7	1,286.5	38.21	34.670						
7,800.0	7,325.7	7,419.1	7,325.7	44.5	23.4	0.25	-906.1	235.8	1,324.7	1,286.2	38.52	34.387						
7,899.3	7,425.0	7,518.4	7,425.0	44.6	23.5	0.25	-906.1	235.8	1,324.7	1,285.8	38.84	34.109						

Company:	BAYSWATER EXPLORATION & PRODUCTION	Local Co-ordinate Reference:	Well Baldridge 7-1
Project:	SEC.36-T7N-R67W	TVD Reference:	WELL @ 4892.0ft (Original Well Elev)
Reference Site:	Baldridge & Schneider Pad Sec.36-T7N-R67W	MD Reference:	WELL @ 4892.0ft (Original Well Elev)
Site Error:	0.0ft	North Reference:	True
Reference Well:	Baldridge 7-1	Survey Calculation Method:	Minimum Curvature
Well Error:	0.0ft	Output errors are at	2.00 sigma
Reference Wellbore	Wellbore #1	Database:	Landmark
Reference Design:	Plan #1 (4-12-12)	Offset TVD Reference:	Offset Datum

Reference Depths are relative to WELL @ 4892.0ft (Original Well Elev) Coordinates are relative to: Baldridge 7-1
Offset Depths are relative to Offset Datum Coordinate System is US State Plane 1983, Colorado Northern Zone
Central Meridian is -105.500000 ° Grid Convergence at Surface is: 0.43°



Company:	BAYSWATER EXPLORATION & PRODUCTION	Local Co-ordinate Reference:	Well Baldridge 7-1
Project:	SEC.36-T7N-R67W	TVD Reference:	WELL @ 4892.0ft (Original Well Elev)
Reference Site:	Baldridge & Schneider Pad Sec.36-T7N-R67W	MD Reference:	WELL @ 4892.0ft (Original Well Elev)
Site Error:	0.0ft	North Reference:	True
Reference Well:	Baldridge 7-1	Survey Calculation Method:	Minimum Curvature
Well Error:	0.0ft	Output errors are at	2.00 sigma
Reference Wellbore	Wellbore #1	Database:	Landmark
Reference Design:	Plan #1 (4-12-12)	Offset TVD Reference:	Offset Datum

Reference Depths are relative to WELL @ 4892.0ft (Original Well Elev)Coordinates are relative to: Baldridge 7-1

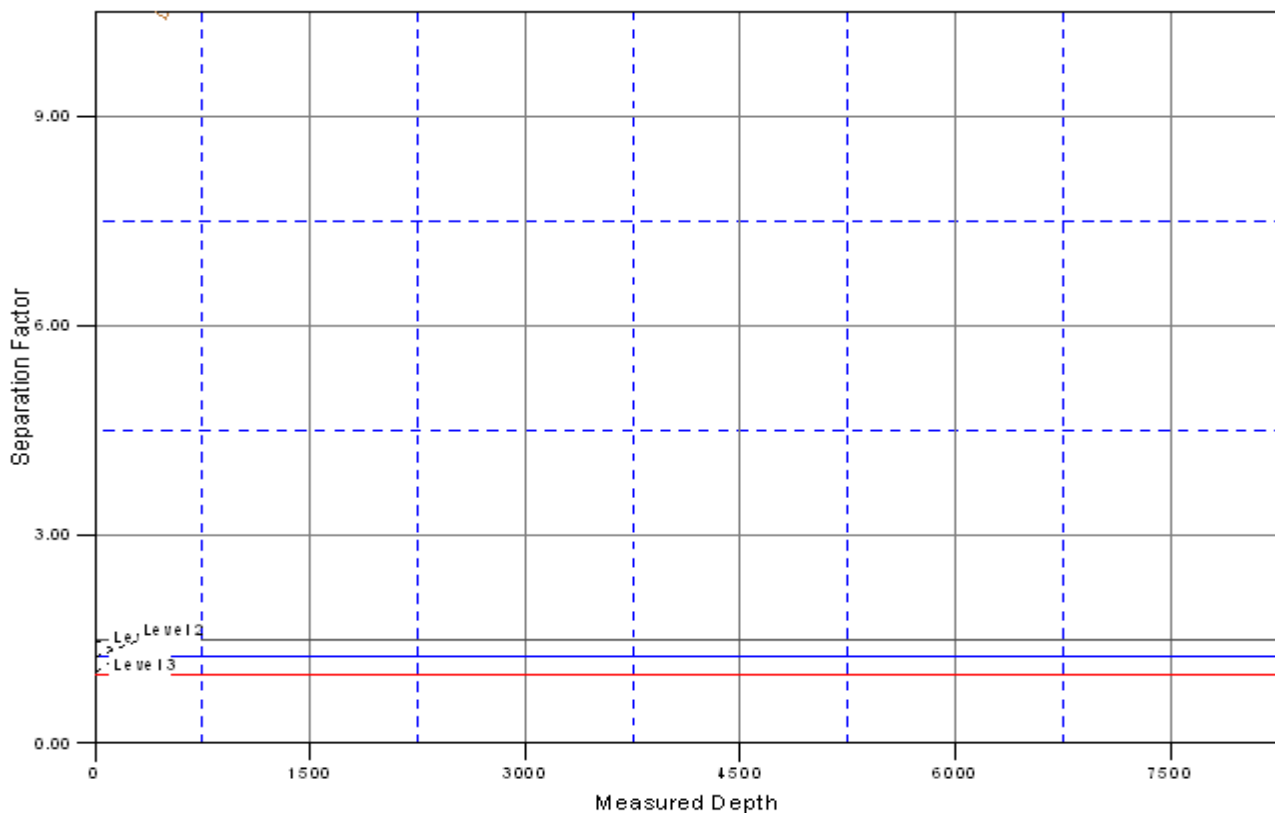
Offset Depths are relative to Offset Datum

Coordinate System is US State Plane 1983, Colorado Northern Zone

Central Meridian is -105.500000 °

Grid Convergence at Surface is: 0.43°

Separation Factor Plot



LEGEND

✂ Baldridge 2-1, Wellbore #1, Plan #1 (4-12-12) \0