

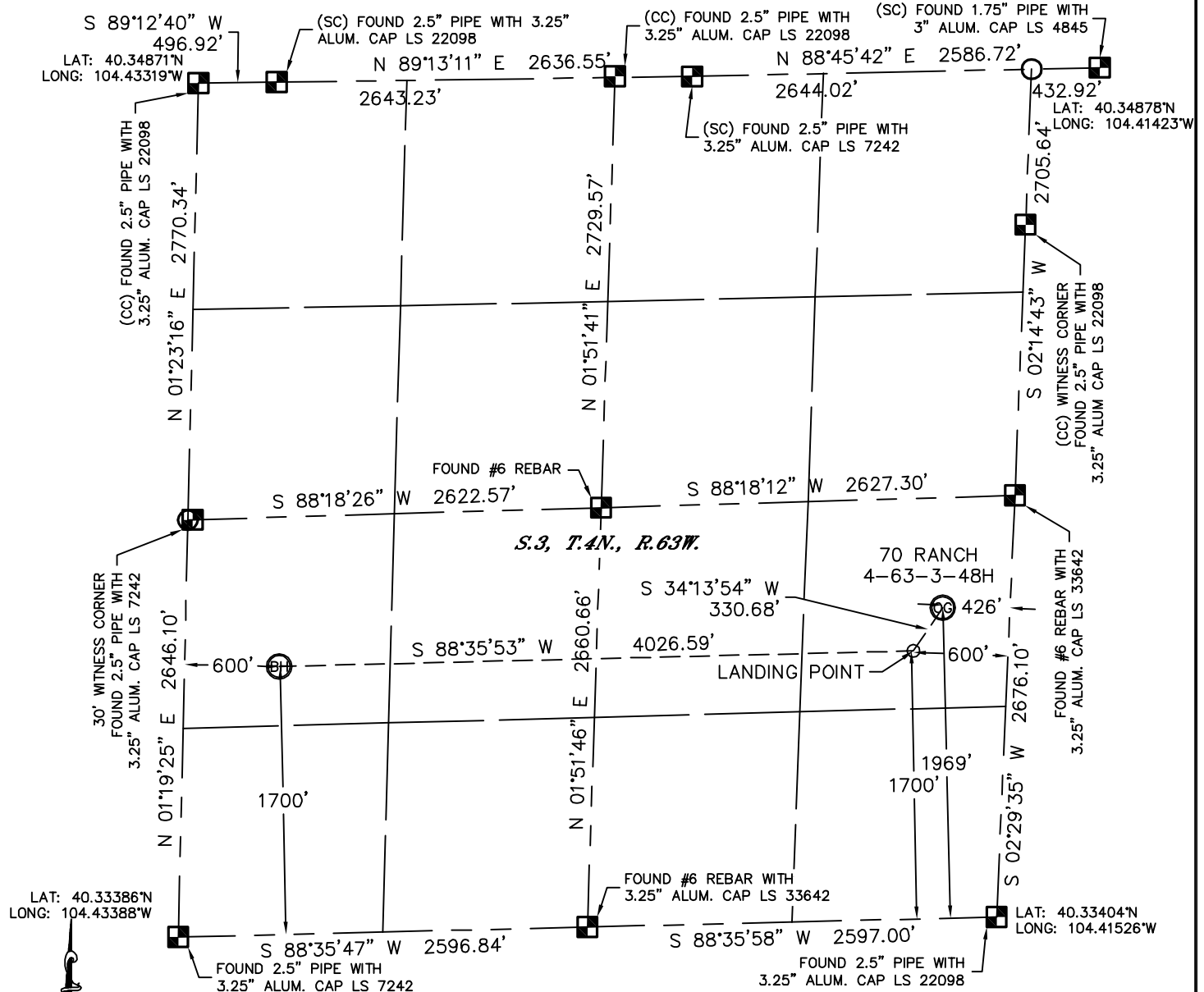


Lat40°, Inc. 1635 Foxtrail Drive, Suite 325 Loveland, CO 970-776-3321

# WELL LOCATION CERTIFICATE

SECTION: 3  
TOWNSHIP: 4N  
RANGE: 63W

THIS MAP DOES NOT REPRESENT A BOUNDARY SURVEY



LAT: 40.33386°N  
LONG: 104.43388°W

LAT: 40.33404°N  
LONG: 104.41526°W

In accordance with a request from Glenn Berglund with BILL BARRETT CORPORATION Lat40°, Inc. has determined the surface location of the 70 RANCH 4-63-3-48H to be 1969' from the SOUTH line and 426' from the EAST line and the bottom hole to be 1700' from the SOUTH line and 600' from the WEST line as measured at right angles from the section lines of Section 3, Township 4 North, Range 63 West of the Sixth Principal Meridian, County of Weld, State of Colorado.

I hereby state that this Well Location Certificate was prepared by me, or under my direct supervision, that the fieldwork was completed on 10/25/11, for and on behalf of BILL BARRETT CORPORATION. That this is not a Land Survey Plat or an Improvement Survey Plat, and that it is not to be relied upon for establishment of fence, building, or other future improvement lines.

## NOTE:

- 1) Bearings shown are Grid Bearings of the Colorado State Plane Coordinate System, North Zone, North American Datum 1983/2007. The lineal dimensions as contained herein are based upon the "U.S. Survey Foot."
- 2) Ground elevations are based on an observed GPS elevation (NAVD 1988 DATUM).
- 3) IMPROVEMENTS: See LOCATION DRAWING for all visible improvements within 400' of disturbed area.
- 4) SURFACE USE: RANGELAND
- 5) INSTRUMENT OPERATOR: ADAM KELLY

## NOTE

According to Colorado law, you must commence any legal action based upon any defect in this W.L.C. within three years after you discover such defect. In no event, may any action based upon any defect in this survey be commenced more than ten years after the date of the certificate shown hereon. (13-80-105 C.R.S.)

## LEGEND



= ALIQUOT MONUMENT AS DESCRIBED



= CALCULATED POSITION

## SURFACE LOCATION

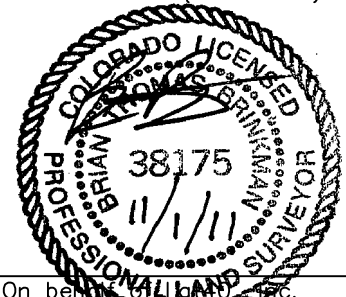
LAT: 40.33943°N (40°20'21.9"N)  
LONG: 104.41640°W (104°24'59.0"W)  
PDOP: 1.2  
ELEV: 4541'  
1/4, 1/4: NE1/4SE1/4  
NEAREST PROPERTY LINE: 426' EAST

## LANDING POINT

LAT: 40.33868°N (40°20'19.3"N)  
LONG: 104.41708°W (104°25'01.5"W)

## BOTTOM HOLE

LAT: 40.33855°N (40°20'18.8"N)  
LONG: 104.43152°W (104°25'53.5"W)

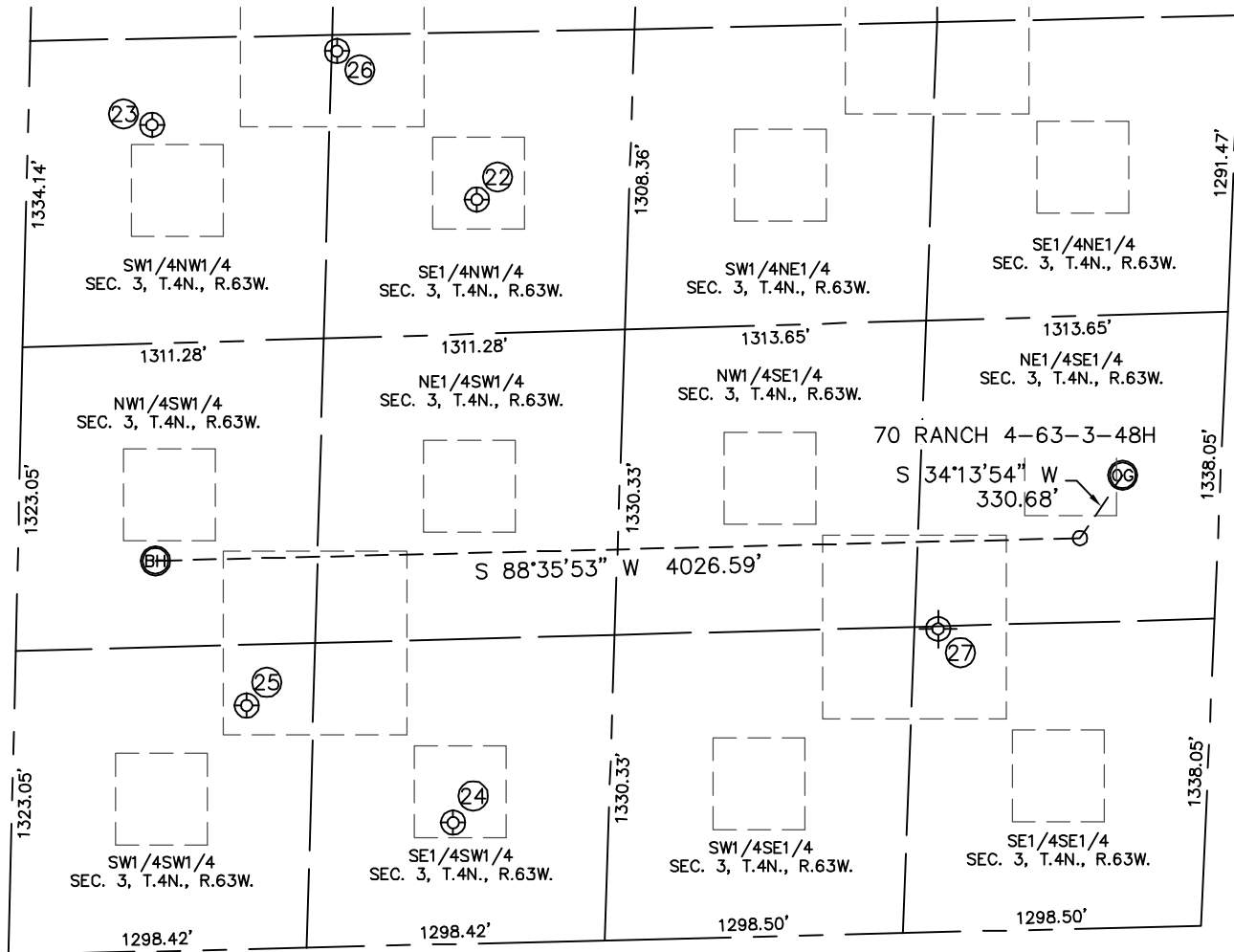


Brian T. Brinkman—On behalf of  
Colorado Licensed Professional Land Surveyor No. 38175  
REV. 1-26-2012  
PROJECT#: 2011312

## SITE SKETCH

70 RANCH 4-63-3-48H

SECTION: 3  
TOWNSHIP: 4N  
RANGE: 63W



- |   |  |   |   |  |   |
|---|--|---|---|--|---|
| <p>②②</p> <p>70 RANCH 22-3<br/>SE1/4NW1/4<br/>2152' FNL<br/>1961' FWL<br/>LAT-40.34282°N<br/>LONG-104.42643°W<br/>PDOP: 1.2<br/>ELEV: 4530'</p> | <p>②③</p> <p>NHF-LAURA 5-3<br/>SW1/4NW1/4<br/>1808' FNL<br/>540' FWL<br/>LAT-40.34376°N<br/>LONG-104.43149°W<br/>PDOP: 1.9<br/>ELEV: 4558'</p> | <p>②④</p> <p>CROISSANT 24-3<br/>SE1/4SW1/4<br/>529' FSL<br/>1922' FWL<br/>LAT-40.33538°N<br/>LONG-104.42692°W<br/>PDOP: 1.3<br/>ELEV: 4567'</p> | <p>②⑤</p> <p>CROISSANT 1<br/>SW1/4SW1/4<br/>1060' FSL<br/>1011' FWL<br/>LAT-40.33681°N<br/>LONG-104.43012°W<br/>PDOP: 2.2<br/>ELEV: 4568'</p> | <p>②⑥</p> <p>70 RANCH CNW-3<br/>SE1/4NW1/4<br/>1498' FNL<br/>1337' FWL<br/>LAT-40.34461°N<br/>LONG-104.42859°W<br/>PDOP: 2.1<br/>ELEV: 4529'</p> | <p>②⑦</p> <p>RONALD #1-B<br/>SE1/4SE1/4<br/>1320' FSL (COGCC)<br/>1200' FEL (COGCC)<br/>LAT-40.33727°N (COGCC)<br/>LONG-104.41899°W (COGCC)<br/>PDOP: N/A<br/>ELEV: 4540' (COGCC)</p> |
|---|--|---|---|--|---|

