

## The Road to Excellence Starts with Safety

<b>Sold To #:</b> 304535	<b>Ship To #:</b> 2281495	<b>Quote #:</b>	<b>Sales Order #:</b> 9450174
<b>Customer:</b> PDC ENERGY EBUS		<b>Customer Rep:</b> SALIORS, CHAD	
<b>Well Name:</b> State 6524	<b>Well #:</b> 21-28	<b>API/UVI #:</b> 05-123-20877-00	
<b>Field:</b> Wattenberg	<b>City (SAP):</b> PLATTEVILLE	<b>County/Parish:</b> Weld	<b>State:</b> Colorado
<b>Lat:</b> N 40.463 deg. OR N 40 deg. 27 min. 47.088 secs.	<b>Long:</b> W 104.443 deg. OR W -105 deg. 33 min. 23.616 secs.		
<b>Job Purpose:</b> Recement Service			
<b>Well Type:</b> Development Well	<b>Job Type:</b> Recement Service		
<b>Sales Person:</b> FLING, MATTHEW	<b>Srvc Supervisor:</b> NIELSON, BRANDON	<b>MBU ID Emp #:</b> 479703	

Job Personnel									
HES Emp Name	Exp Hrs	Emp #	HES Emp Name	Exp Hrs	Emp #	HES Emp Name	Exp Hrs	Emp #	
BARNES, BRIAN L	4.3	485204	CHAVEZ, JEROME	4.3	458288	NIELSON, BRANDON	4.3	479703	
STOEBER, KEITH A	4.3	486734	CHRISTOPHE						

Equipment									
HES Unit #	Distance-1 way	HES Unit #	Distance-1 way	HES Unit #	Distance-1 way	HES Unit #	Distance-1 way		
10248062C	54 mile	10951212	54 mile	11036301	54 mile	11362287C	54 mile		

Job Hours									
Date	On Location Hours	Operating Hours	Date	On Location Hours	Operating Hours	Date	On Location Hours	Operating Hours	
4/19/12	4.3	2							
<b>TOTAL</b>			<i>Total is the sum of each column separately</i>						

Job Times									
Formation Name	Formation Depth (MD)	Top	Bottom	Called Out	Date	Time	Time Zone		
<b>Form Type</b>									
Job depth MD	3009. ft		BHST	On Location	19 - Apr - 2012	02:30	MST		
Water Depth			Job Depth TVD	Job Started	19 - Apr - 2012	06:00	MST		
Perforation Depth (MD)	From		Wk Ht Above Floor	Job Completed	19 - Apr - 2012	07:30	MST		
	To			Departed Loc	19 - Apr - 2012	09:18	MST		
						10:15	MST		

Well Data												
Description	New / Used	Max pressure psig	Size in	ID in	Weight lbm/ft	Thread	Grade	Top MD ft	Bottom MD ft	Top TVD ft	Bottom TVD ft	Make
Open Hole				12.					449.	4000.		
Production Casing	Used		4.5	4.052	10.5		J-55		8450.			
Surface Casing	Used		8.625	8.097	24.		J-55		449.			
TUBING	Used		1.25	.671	3.02				3020.			

Tools and Accessories													
Type	Size	Qty	Make	Depth	Type	Size	Qty	Make	Depth	Type	Size	Qty	Make
Guide Shoe					Packer					Top Plug			
Float Shoe					Bridge Plug					Bottom Plug			
Float Collar					Retainer					SSR plug set			
Insert Float										Plug Container			
Stage Tool										Centralizers			

Miscellaneous Materials									
Gelling Agt	Conc	Conc	Surfactant	Conc	Conc	Acid Type	Qty	Conc	%
Treatment Fld			Inhibitor			Sand Type	Size		

Fluid Data									
Stage/Plug #: 1	Fluid Name	Qty	Qty uom	Mixing Density lbm/gal	Yield ft3/sk	Mix Fluid Gal/sk	Rate bbl/min	Total Mix Fluid Gal/sk	
<b>Fluid #</b>	<b>Stage Type</b>								

Stage/Plug #: 1													
Fluid #	Stage Type	Fluid Name		Qty	Qty uom	Mixing Density lbm/gal	Yield ft <sup>3</sup> /sk	Mix Fluid Gal/sk	Rate bbl/min	Total Mix Fluid Gal/sk			
1	ClayWeb Water Spacer			10.00	bbl	8.33	.0	.0	2.0				
2	MUD FLUSH III	MUD FLUSH III - SBM (528788)		12.00	bbl	8.4	.0	.0	2.0				
3	ClayWeb Water Spacer			10.00	bbl	8.33	.0	.0	2.0				
		59.525 gal/Mgal CLA-WEB - TOTE (101985045)											
4	Varicem 12#	VARICEM (TM) CEMENT (452009)		360.0	sacks	12.	2.18	12.34	2.0	12.34			
		12.34 Gal FRESH WATER											
Calculated Values				Pressures		Volumes							
Displacement		Shut In: Instant		Lost Returns		Cement Slurry		Pad					
Top Of Cement		5 Min		Cement Returns 6 BBL		Actual Displacement		Treatment					
Frac Gradient		15 Min		Spacers		Load and Breakdown		Total Job					
Rates													
Circulating		Mixing		Displacement		Avg. Job							
Cement Left In Pipe		Amount	0 ft	Reason	Shoe Joint								
Frac Ring # 1 @	ID	Frac ring # 2 @	ID	Frac Ring # 3 @	ID	Frac Ring # 4 @	ID						
The Information Stated Herein Is Correct					Customer Representative Signature								

## Cementing Job Log

### The Road to Excellence Starts with Safety

<b>Sold To #:</b> 304535		<b>Ship To #:</b> 2281495		<b>Quote #:</b>		<b>Sales Order #:</b> 9450174	
<b>Customer:</b> PDC ENERGY EBUS				<b>Customer Rep:</b> SALIORS, CHAD			
<b>Well Name:</b> State 6524		<b>Well #:</b> 21-28		<b>API/UWI #:</b> 05-123-20877-00		<b>State:</b> Colorado	
<b>Field:</b> Wattenberg				<b>City (SAP):</b> PLATTEVILLE		<b>County/Parish:</b> Weld	
<b>Legal Description:</b>							
<b>Lat:</b> N 40.463 deg. OR N 40 deg. 27 min. 47.088 secs.				<b>Long:</b> W 104.443 deg. OR W -105 deg. 33 min. 23.616 secs.			
<b>Contractor:</b>				<b>Rig/Platform Name/Num:</b>			
<b>Job Purpose:</b> Recement Service				<b>Ticket Amount:</b>			
<b>Well Type:</b> Development Well				<b>Job Type:</b> Recement Service			
<b>Sales Person:</b> FLING, MATTHEW				<b>Svc Supervisor:</b> NIELSON, BRANDON		<b>MBU ID Emp #:</b> 479703	

Activity Description	Date/Time	Cht #	Rate bbl/min	Volume bbl		Pressure psig		Comments
				Stage	Total	Tubing	Casing	
Test Lines	04/19/2012 07:32							PRESSURE TEST TO 3500 PSI NO VISIBLE LEAKS
Pump Spacer 1	04/19/2012 07:36		2		10			FRESH WATER
Pump Spacer 2	04/19/2012 07:42		2		12			FRESH WATER MIXED WITH MUD FLUSH
Pump Spacer 1	04/19/2012 07:49		2		10			FRESH WATER
Pump Cement	04/19/2012 07:54		2		141			360 SKS VARICEM MIXED @ 12 PPG WITH FRESH WATER. CALLED 6 BBL CMT BACK TO SURFACE
Pump Displacement	04/19/2012 09:12		1.5		1.5			FRESH WATER
End Job	04/19/2012 09:30							

Sold To # : 304535

Ship To # :2281495

Quote # :

Sales Order # :

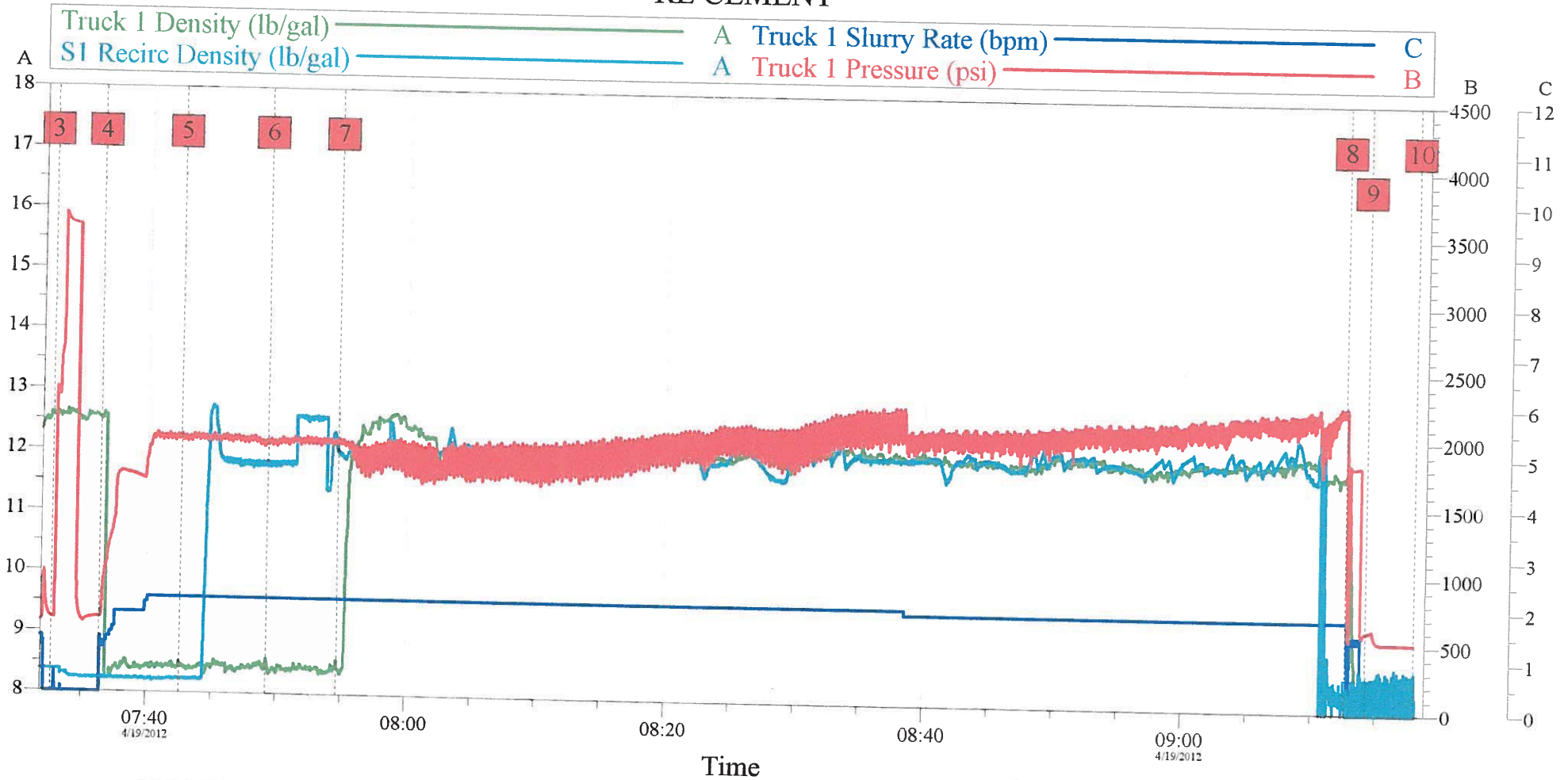
9450174

SUMMIT Version: 7.3.0021

Thursday, April 19, 2012 09:52:00

PDC STATE 6524 21-28

RE CEMENT



### Global Event Log

#### Intersection

- 1 Starting Job
- 4 Pump Spacer 1
- 7 Pump Cement
- 10 Ending Job

07:17:17  
07:36:21  
07:54:43  
09:18:01

#### Intersection

- 2 Start Job
- 5 Pump Spacer 2
- 8 Pump Displacement

07:31:24  
07:42:37  
09:12:38

#### Intersection

- 3 Test Lines
- 6 Pump Spacer 1
- 9 End Job

07:32:39  
07:49:15  
09:14:18

Customer:

Well Description:

Job Date: 19-Apr-2012

UWI:

Sales Order #: 9450174

OptiCem v6.4.10  
19-Apr-12 09:30