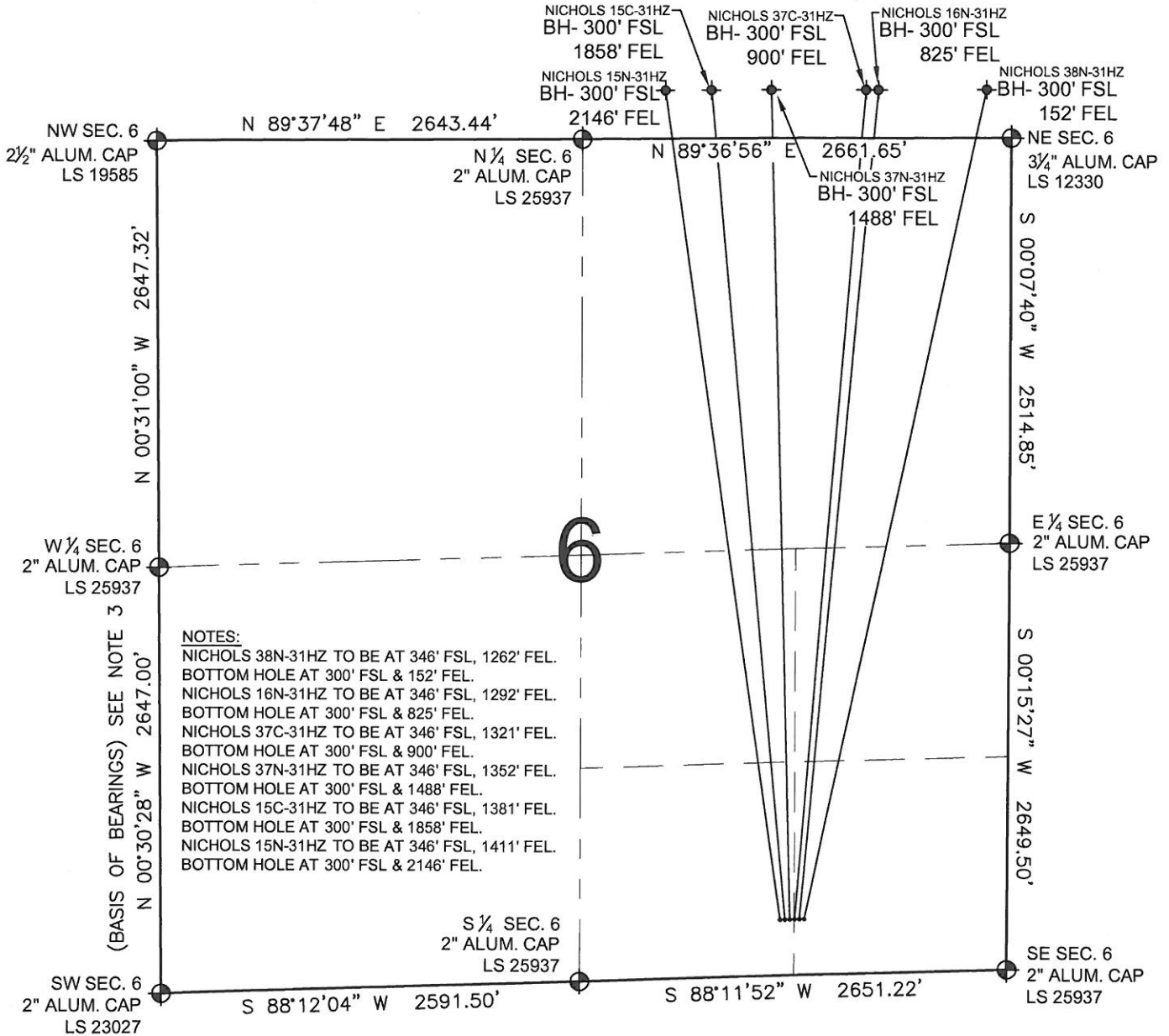


PAD DRAWING: NICHOLS 6 PAD

SECTION 6, TOWNSHIP 2 NORTH, RANGE 65 WEST, 6TH P.M.



NOTES:

NICHOLS 38N-31HZ TO BE AT 346' FSL, 1262' FEL.
 BOTTOM HOLE AT 300' FSL & 152' FEL.

NICHOLS 16N-31HZ TO BE AT 346' FSL, 1292' FEL.
 BOTTOM HOLE AT 300' FSL & 825' FEL.

NICHOLS 37C-31HZ TO BE AT 346' FSL, 1321' FEL.
 BOTTOM HOLE AT 300' FSL & 900' FEL.

NICHOLS 37N-31HZ TO BE AT 346' FSL, 1352' FEL.
 BOTTOM HOLE AT 300' FSL & 1488' FEL.

NICHOLS 15C-31HZ TO BE AT 346' FSL, 1381' FEL.
 BOTTOM HOLE AT 300' FSL & 1858' FEL.

NICHOLS 15N-31HZ TO BE AT 346' FSL, 1411' FEL.
 BOTTOM HOLE AT 300' FSL & 2146' FEL.

- NOTES:**
- THIS FIELD SURVEY CONFORMS TO THE MINIMUM STANDARDS SET BY THE C.O.G.C.C., RULE NO. 215
 - HORIZONTAL POSITIONS AND ORTHOMETRIC ELEVATIONS SHOWN AT THE WELL HEAD, ARE BASED ON GPS-RTK POSITIONS DERIVED FROM MINIMUM 2-HOUR STATIC OBSERVATIONS CORRECTED BY THE NATIONAL GEODETIC SURVEY ONLINE POSITIONING USER SERVICE, O.P.U.S. DATUM: HORIZONTAL = NAD83/2007, VERTICAL = NAVD88
 - THE BASIS OF BEARINGS ARE STATE PLANE COORDINATE SYSTEM GRID BEARINGS SHOWN HEREON BETWEEN THE DESCRIBED THE MONUMENTS SHOWN HEREON.
 - GRID DISTANCES ARE SHOWN, AS MEASURED IN THE FIELD, WITH TIES TO WELLS MEASURED PERPENDICULAR TO SECTION LINES.

LEGEND

- ⊕ = EXISTING MONUMENT
- ⊙ = PROPOSED WELL
- ⊕ = BOTTOM HOLE
- ⊙ = EXISTING WELL
- BH = BOTTOM HOLE

PREPARED BY:



KERR-MCGEE OIL & GAS ONSHORE LP

FIELD DATE: 12-20-11	PAD NAME: NICHOLS 6 PAD
DRAWING DATE: 01-24-12	SURFACE LOCATION: WELD COUNTY, COLORADO SW 1/4 SE 1/4, SEC. 6, T2N, R65W, 6TH P.M. SE 1/4 SE 1/4, SEC. 6, T2N, R65W, 6TH P.M.
BY: SMF	

