

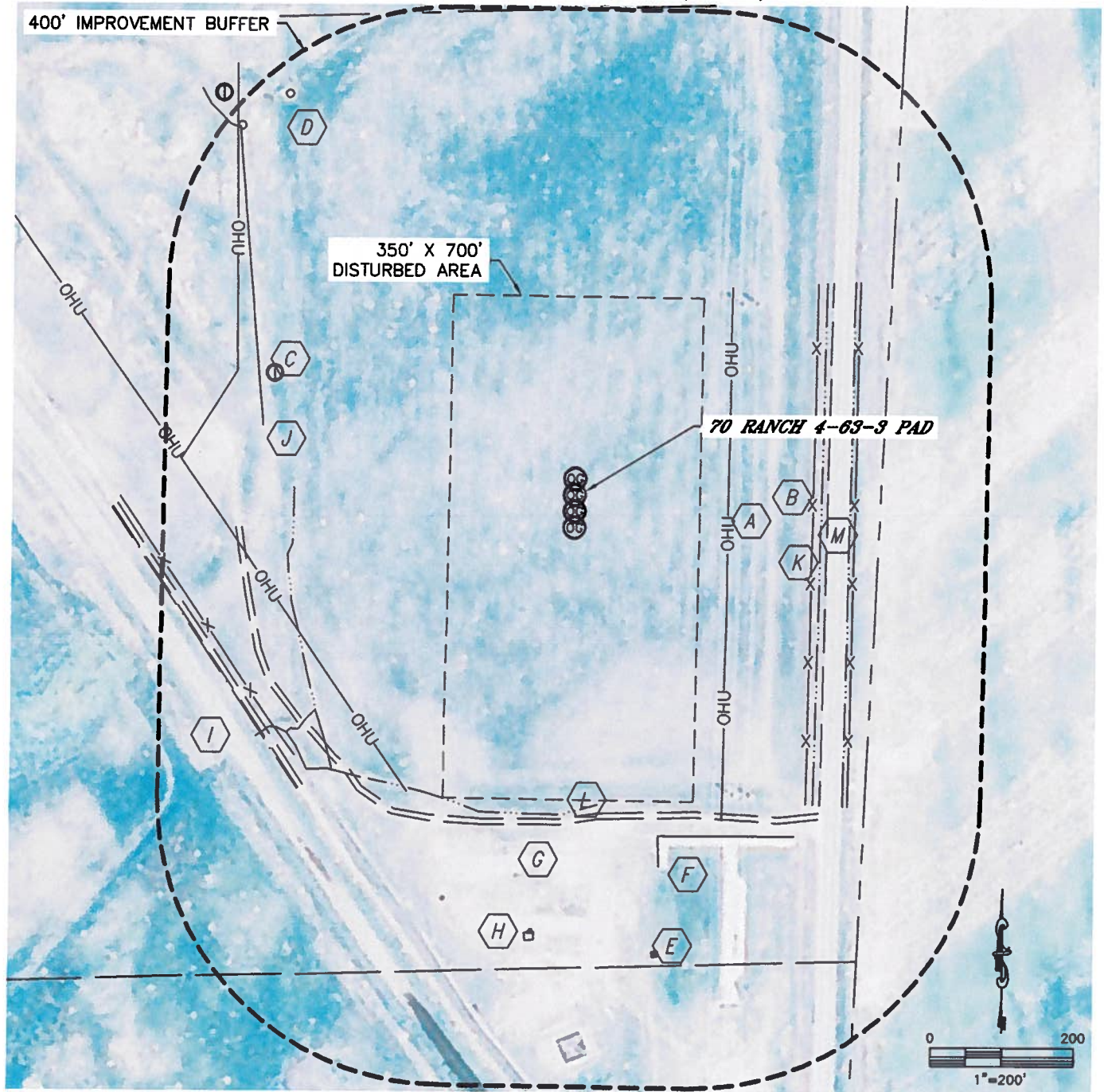


Lat40°, Inc. 1635 Foxtrail Drive, Suite 325 Loveland, CO 970-776-3321

LOCATION DRAWING

70 RANCH 4-63-3-32H, 33H, 48H, 49H

SECTION: 3
TOWNSHIP: 4N
RANGE: 63W



IMPROVEMENTS:

(MEASURED FROM 70 RANCH 4-63-3-33H LOCATION)

- | | | |
|--|---|--|
| A OVERHEAD UTILITY 215' E, 425' SW, 502' NW | G FIELD ROAD 444' S, 538' SW | L DITCH 432' S, 392' W, 696' NW |
| B FENCE 333' E, 391' E, 528' SW | H FUEL TANK 609' S | M COUNTY ROAD 69 353' E |
| C IRRIGATION WELL 453' NW, 746' NW | I CANAL 548' SW | |
| D IRRIGATION VENT PIPE 687' NW, 695' NW | J IRRIGATION PIPES 492' SW, 486' SW, 487' SW, 535' SW, 447' NW | |
| E BUILDING 645' SE | K BARROW DITCH 345' E, 385' E | |
| F CONCRETE SLAB 490' SE | | |

NEAREST: BUILDING 645' E, PUBLIC ROAD (CR 69) 353' E, ABOVE GROUND UTILITY 215' E, RAILROAD 5280'+, PROPERTY LINE 427' E

DATE: rev.3/22/2012
PROJECT#: 2011312

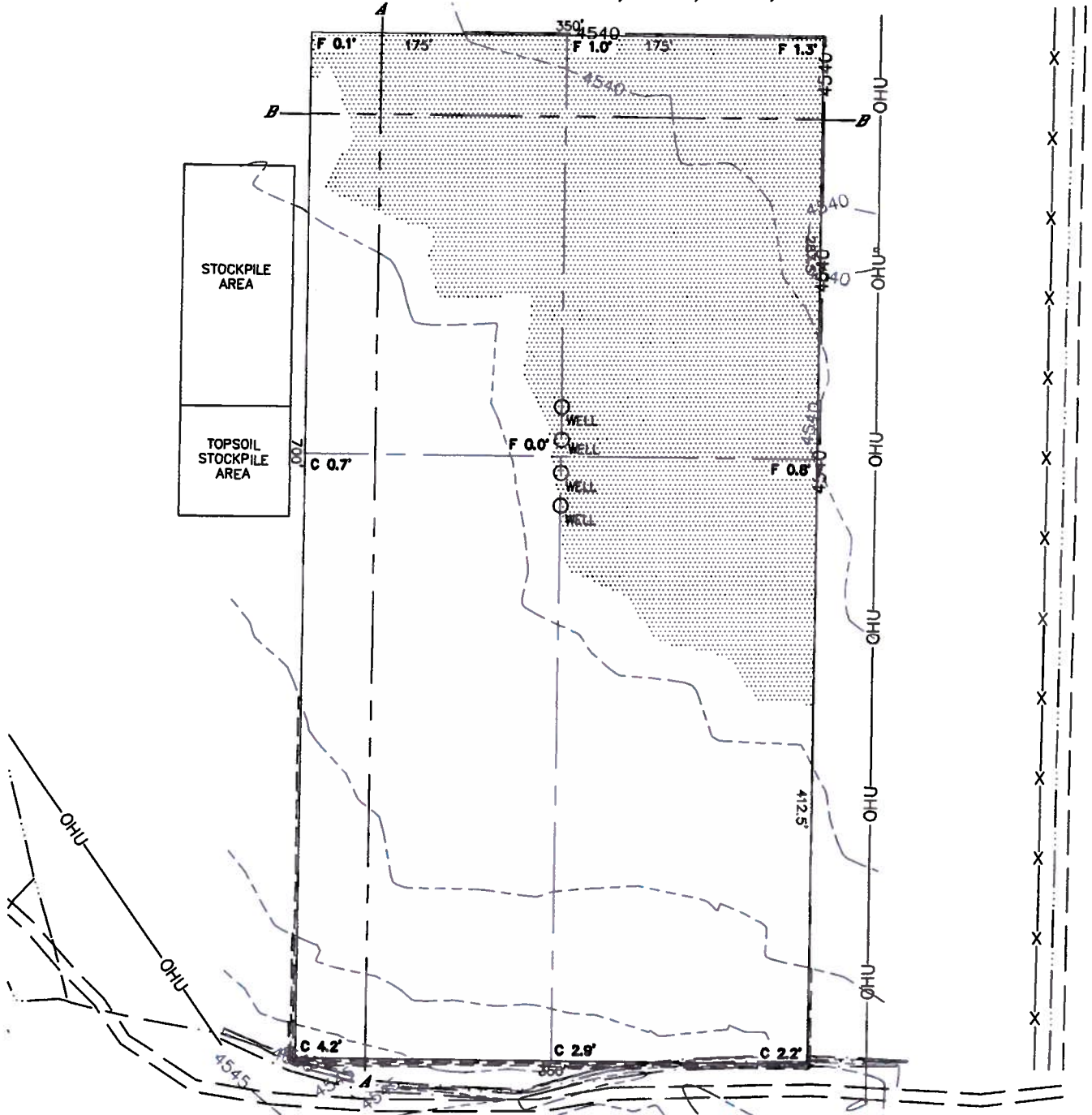


Lat40°, Inc. 1635 Foxtrail Drive, Suite 325 Loveland, CO 970-776-3321

CUT & FILL DIAGRAM

70 RANCH 4-63-3-32H, 33H, 48H, 49H

SECTION: 3
TOWNSHIP: 4N
RANGE: 63W



OPERATOR: BILL BARRETT CORP
LOCATION: 2014' FSL, 427' FEL
EXISTING ELEV=4540.8'
PROPOSED ELEV=4540.8'
DISTURBANCE= 5.7 ACRES

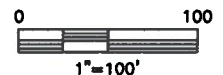
ESTIMATED EARTHWORK:
TOPSOIL= 9,074 CY
CUT= 5,250 CY
FILL= 1,747 CY
EXCESS= 3,503 CY

NOTE:

- 1) Ground elevations are based on an observed GPS elevation (NAVD 1988 DATUM).
- 2) No allowance has been made for soil expansion or compaction
- 3) Proposed elevation does not account for top soil removal.
- 4) Top soil volume assumes 12" depth across entire location.
- 5) Fill slopes 2:1
- 6) Cut slopes 1.5:1

LEGEND

EX. CONTOUR	---
PRO. CONTOUR	---
FILL AREA	



REV. 3/23/2012
PROJECT#: 2011312

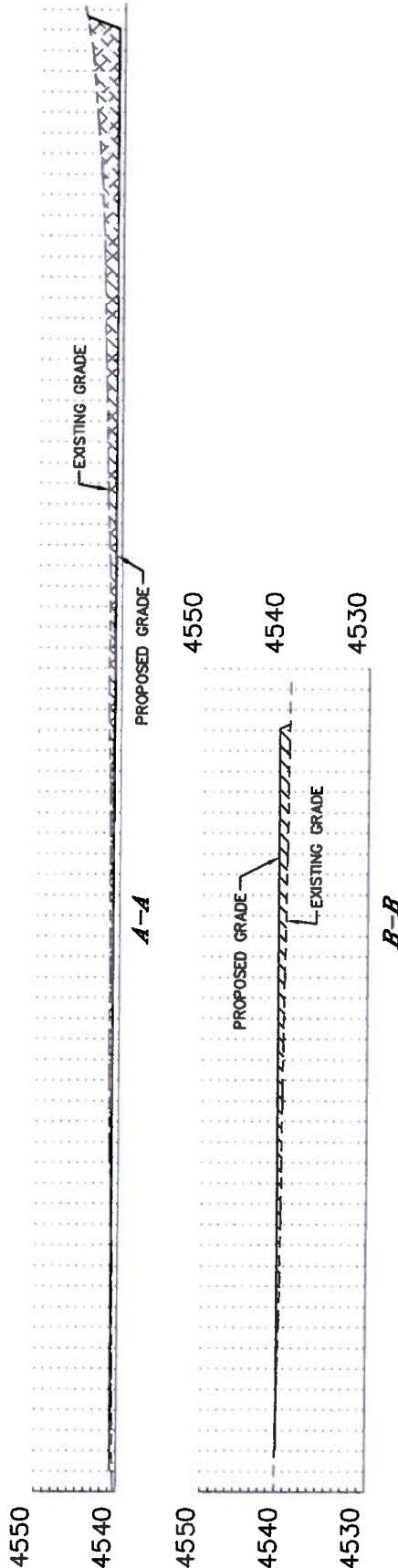


Lat40°, Inc. 1635 Foxtrail Drive, Suite 325 Loveland, CO 970-776-3321

CROSS SECTION DIAGRAM

70 RANCH 4-63-3-32H, 33H, 48H, 49H

SECTION: 3
TOWNSHIP: 4N
RANGE: 63W



HORIZONTAL SCALE: 1"=80', VERTICAL SCALE: 1"=20'