

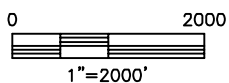
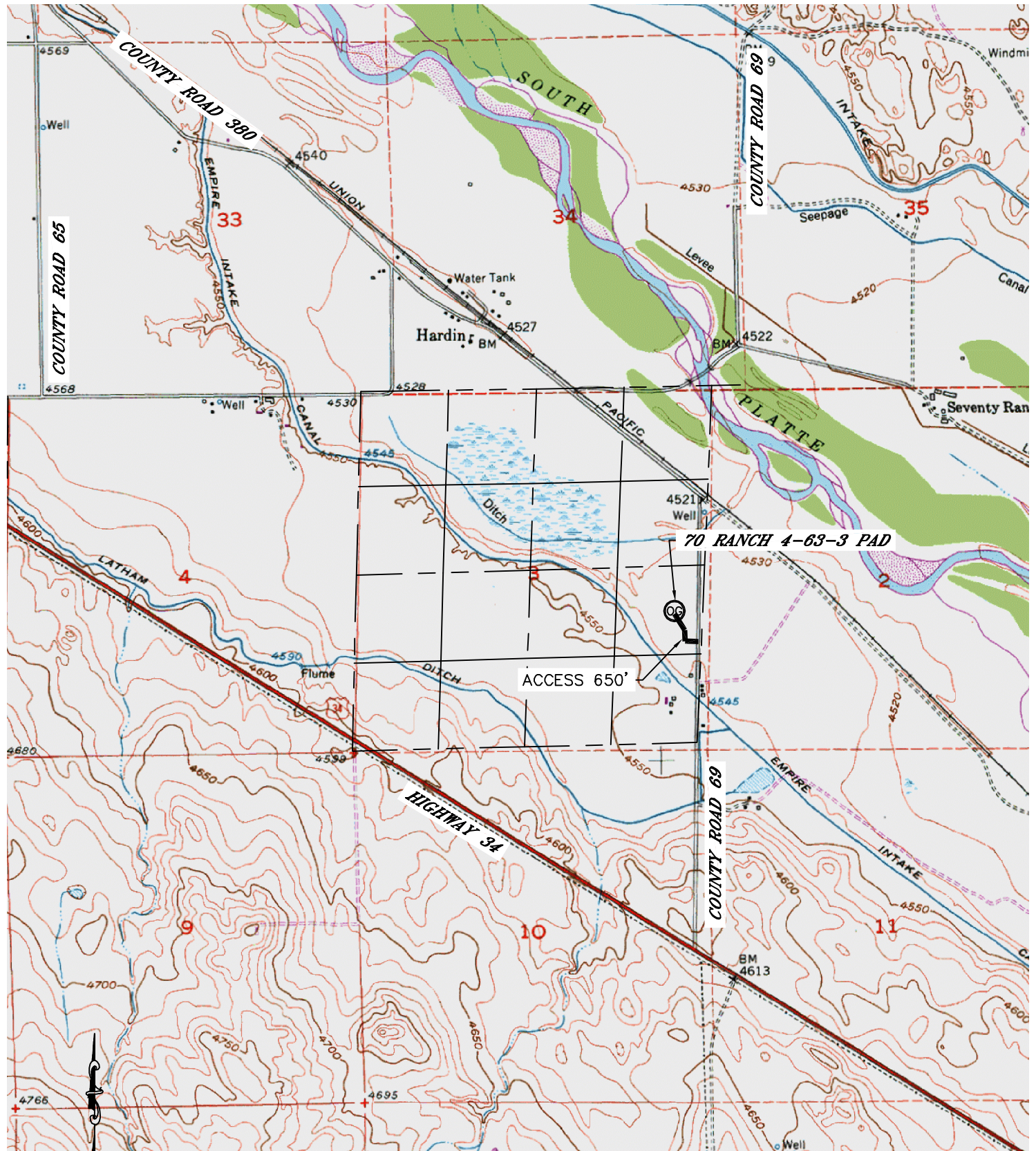


Lat40°, Inc. 1635 Foxtrail Drive, Suite 325 Loveland, CO 970-776-3321

ACCESS ROAD MAP

70 RANCH 4-63-3-32H, 33H, 48H, 49H

SECTION: 3
TOWNSHIP: 4N
RANGE: 63W



DIRECTIONS:
FROM THE INTERSECTION OF HIGHWAY 34 AND COUNTY ROAD 69,
DRIVE 0.9 MILE NORTH ON COUNTY ROAD 69, THEN WEST ON ACCESS ROAD 650' TO WELL PAD.

REV. 1-26-2012
PROJECT#: 2011312