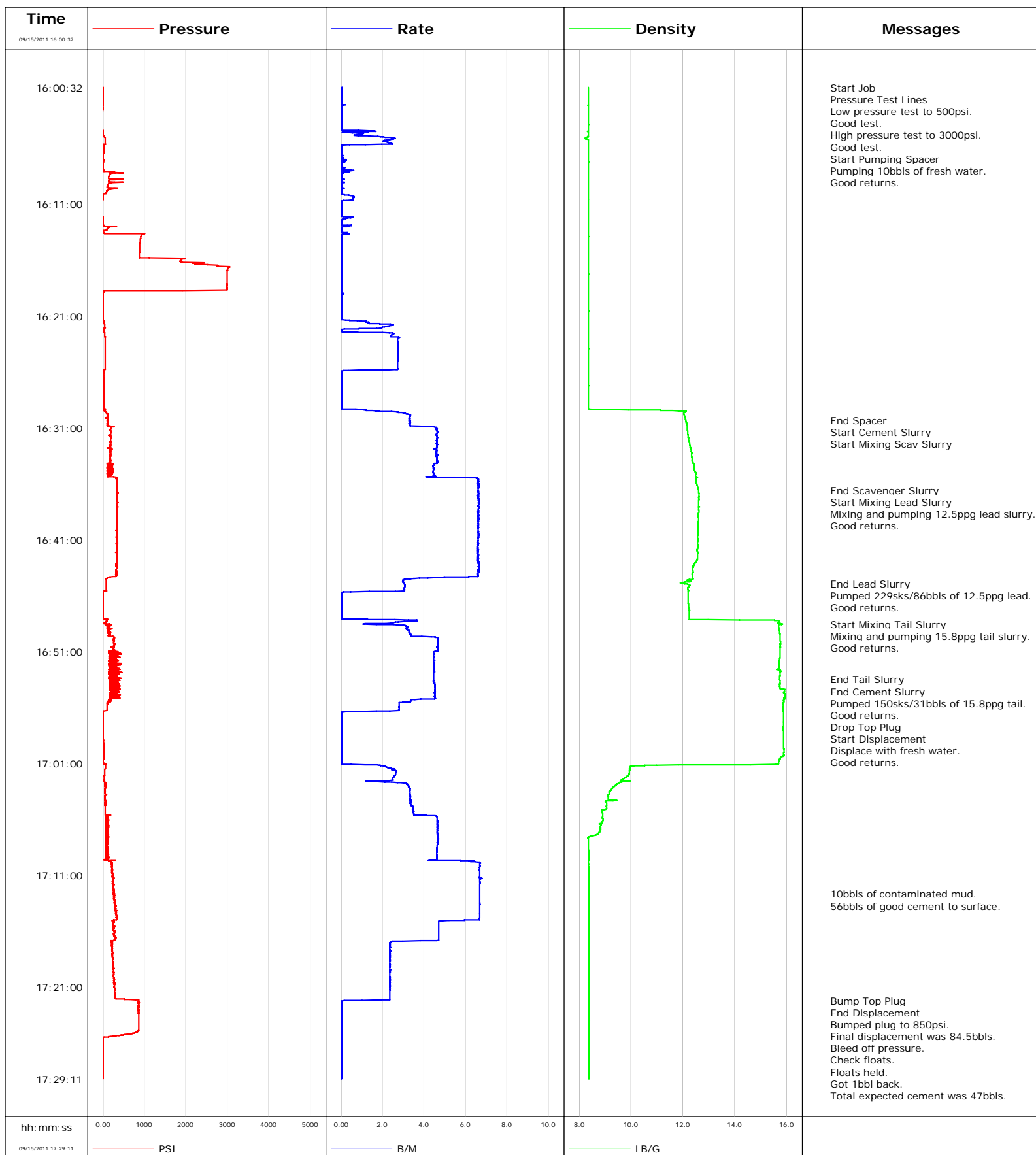


Well FED 25-5D
Field S. PARACHUTE
Engineer Jeff Patterson
Country United States

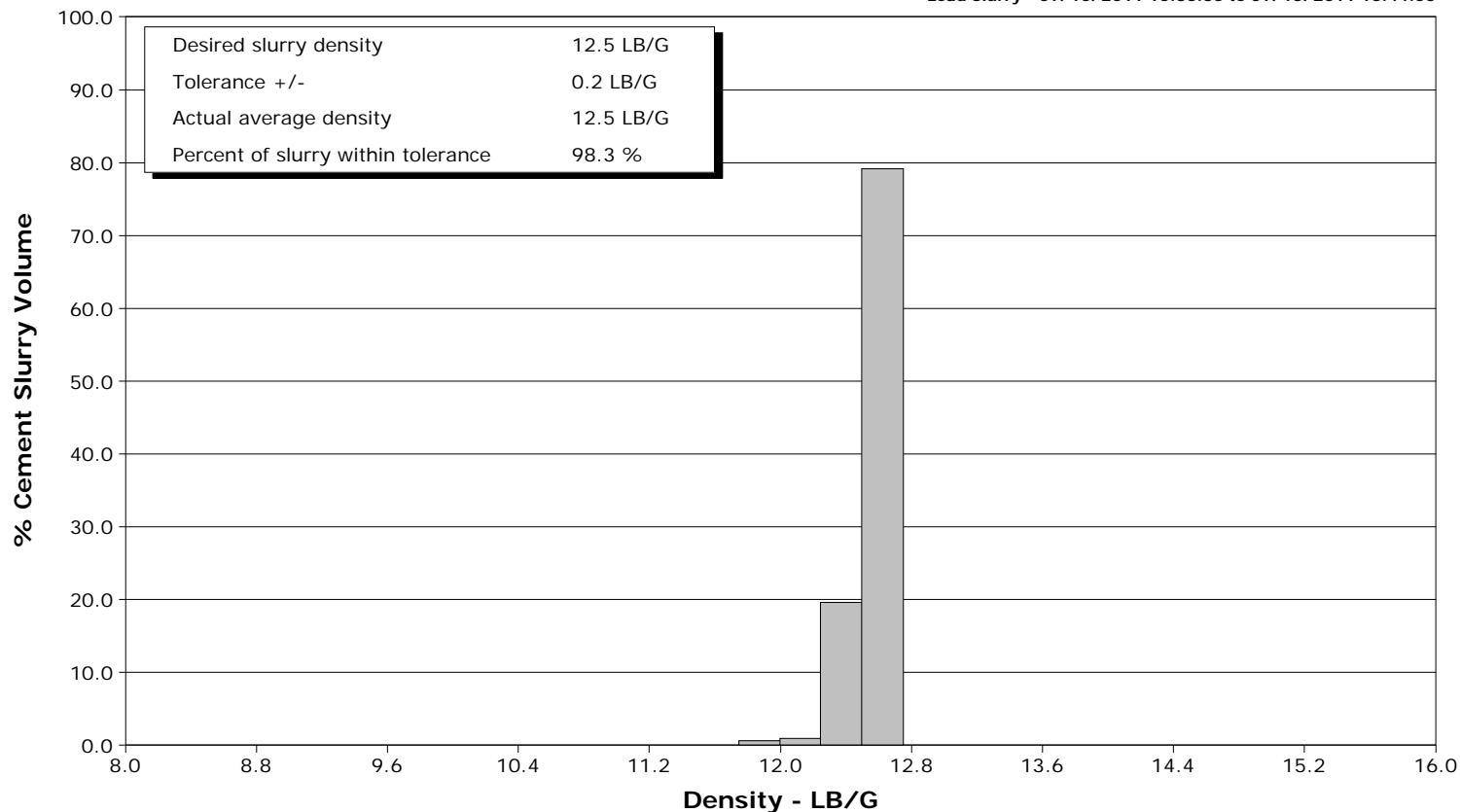
Client ENCANA
SIR No. BQMF-00146
Job Type 9 5/8" SURFACE
Job Date 09-15-2011



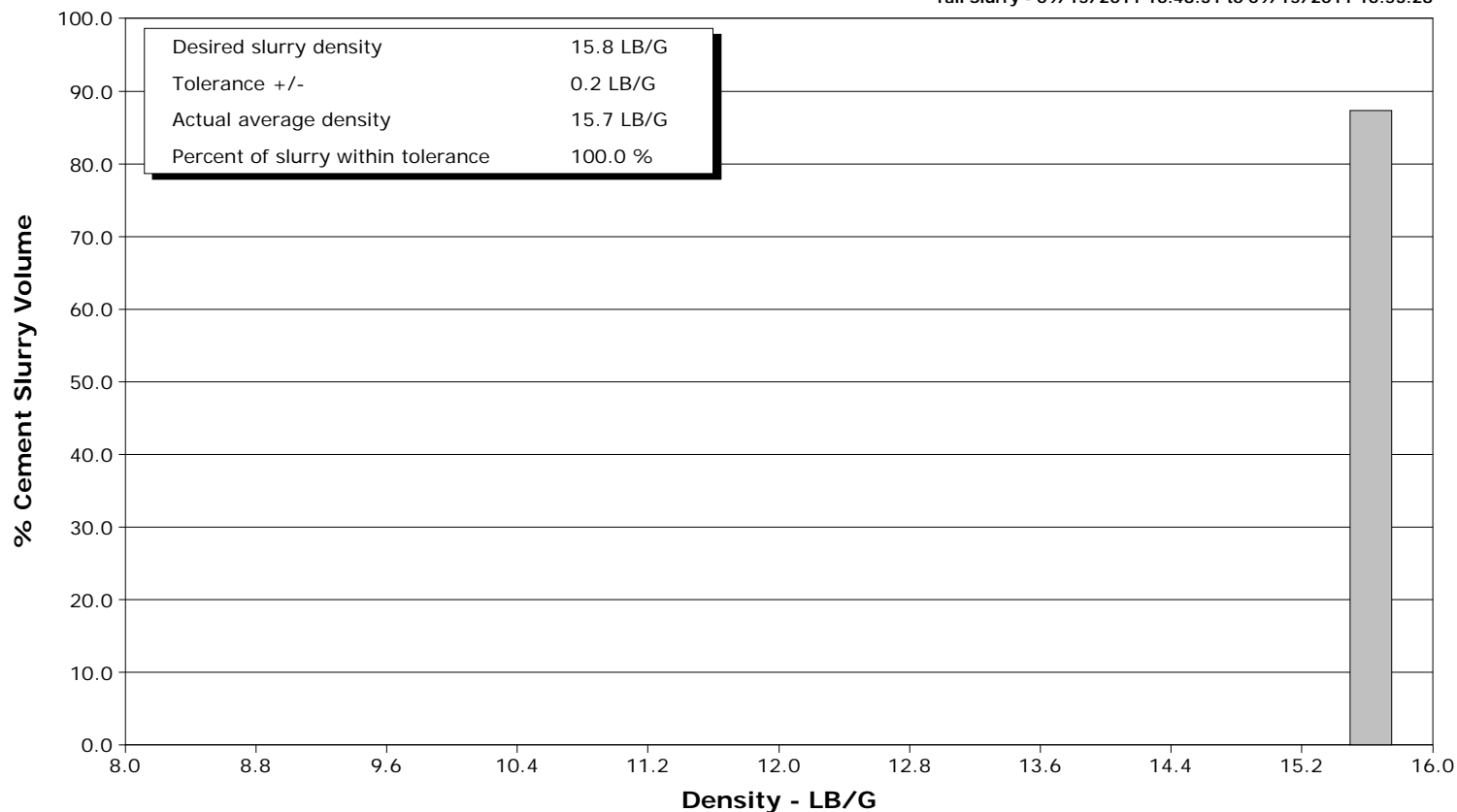
Well FED 25-5D
Field S. PARACHUTE
Engineer Jeff Patterson
Country United States

Client ENCANA
SIR No. BQMF-00146
Job Type 9 5/8" SURFACE
Job Date 09-15-2011

Lead Slurry - 09/15/2011 16:36:35 to 09/15/2011 16:44:55



Tail Slurry - 09/15/2011 16:48:31 to 09/15/2011 16:53:28





Cementing Service Report

				Customer ENCANA		Job Number BQMF-00146	
Well FED 25-5D FED 25-5D			Location (legal) PE-25		Schlumberger Location Grand Junction, Colorado		Job Start Sep/15/2011
Field S. PARACHUTE		Formation Name/Type SHALE		Deviation 0 deg	Bit Size 12.3 in	Well MD 1134.0 ft	Well TVD 1134.0 ft
County GARFIELD		State/Province Colorado		BHP	BHST 95 degF	BHCT 81 degF	Pore Press. Gradient
Well Master 0631277975		API/UWI					
Rig Name PATTERSON 330		Drilled For Gas	Service Via Land	Casing/Liner			
				Depth, ft	Size, in	Weight, lb/ft	Grade
							Thread
Offshore Zone		Well Class New	Well Type Development	1134.0	9.630	36.0	J55
				0.0	0.000	0.0	8RD
Drilling Fluid Type		Max. Density	Plastic Viscosity	Tubing/Drill Pipe			
				Depth,	Size,	Weight,	Grade
							Thread
Service Line Cementing		Job Type 9 5/8" SURFACE					
Max. Allowed Tub. Press 3000 psi		Max. Allowed Ann. Press	WH Connection 9 5/8" CEMENT HEAD	Perforations/Open Hole			
				Top,	Bottom,	No. of Shots	Total Interval
							Diameter
				Treat Down Casing	Displacement 84.0 bbl	Packer Type	Packer Depth
				Tubing Vol.	Casing Vol. 87.6 bbl	Annular Vol. 66.0 bbl	Openhole Vol. 157.0 bbl
Casing/Tubing Secured <input checked="" type="checkbox"/>		1 Hole Vol. Circulated prior to Cement <input checked="" type="checkbox"/>		Casing Tools		Squeeze Job	
Lift Pressure 561 psi				Shoe Type Guide		Squeeze Type	
Pipe Rotated <input type="checkbox"/>		Pipe Reciprocated <input type="checkbox"/>		Shoe Depth 1134.0 ft		Tool Type	
No. Centralizers		Top Plugs 1	Bottom Plugs	Stage Tool Type		Tool Depth	
Cement Head Type Single				Stage Tool Depth		Tail Pipe Size	
Job Scheduled For Sep/15/2011		Arrived on Location Sep/15/2011	Leave Location Sep/15/2011	Collar Type Float		Tail Pipe Depth	
				Collar Depth 1090.0 ft		Sqz. Total Vol.	
Date	Time 24-hr clock	Treating Pressure PSI	Flow Rate B/M	Density LB/G	Volume BBL	Message	
09/15/2011	15:59:58					Started Acquisition	
09/15/2011	16:00:32	-9	0.0	8.35	0.0		
09/15/2011	16:00:33					Start Job	
09/15/2011	16:00:33	-9	0.0	8.35	0.0		
09/15/2011	16:00:34					Pressure Test Lines	
09/15/2011	16:00:34	-9	0.0	8.35	0.0		
09/15/2011	16:00:37					Low pressure test to 500psi.	
09/15/2011	16:00:37					Good test.	
09/15/2011	16:00:37					High pressure test to 3000psi.	
09/15/2011	16:00:37	-9	0.0	8.35	0.0		
09/15/2011	16:00:38					Good test.	
09/15/2011	16:00:38	-10	0.0	8.35	0.0		
09/15/2011	16:00:39					Start Pumping Spacer	
09/15/2011	16:00:39	-10	0.0	8.35	0.0		
09/15/2011	16:00:40					Pumping 10bbls of fresh water.	
09/15/2011	16:00:40	-10	0.0	8.35	0.0		
09/15/2011	16:00:41					Good returns.	
09/15/2011	16:00:41	-10	0.0	8.35	0.0		
09/15/2011	16:00:58	-10	0.0	8.35	0.0		
09/15/2011	16:01:28	-11	0.0	8.35	0.0		
09/15/2011	16:01:58	-11	0.0	8.35	0.0		

Well FED 25-5D FED 25-5D			Field S. PARACHUTE		Job Start Sep/15/2011	Customer ENCANA	Job Number BQMF-00146
Date	Time 24-hr clock	Treating Pressure PSI	Flow Rate B/M	Density LB/G	Volume BBL	Message	
09/15/2011	16:02:58	-12	0.0	8.36	0.1		
09/15/2011	16:03:28	-13	0.0	8.36	0.1		
09/15/2011	16:03:58	-13	0.0	8.36	0.1		
09/15/2011	16:04:28	-6	1.7	8.32	0.2		
09/15/2011	16:04:58	35	1.9	8.32	0.6		
09/15/2011	16:05:28	49	2.3	8.36	1.8		
09/15/2011	16:05:58	3	0.0	8.36	2.2		
09/15/2011	16:06:28	2	0.0	8.36	2.2		
09/15/2011	16:06:58	-4	0.0	8.36	2.3		
09/15/2011	16:07:28	-5	0.0	8.36	2.3		
09/15/2011	16:07:58	8	0.5	8.36	2.3		
09/15/2011	16:08:28	146	0.0	8.36	2.4		
09/15/2011	16:08:58	134	0.0	8.36	2.4		
09/15/2011	16:09:28	106	0.0	8.36	2.4		
09/15/2011	16:09:58	79	0.0	8.36	2.4		
09/15/2011	16:10:28	-11	0.6	8.36	2.6		
09/15/2011	16:10:58	-13	0.0	8.36	2.7		
09/15/2011	16:11:28	-13	0.0	8.36	2.7		
09/15/2011	16:11:58	-13	0.0	8.36	2.7		
09/15/2011	16:12:28	-8	0.0	8.36	2.7		
09/15/2011	16:12:58	45	0.2	8.36	2.8		
09/15/2011	16:13:28	-2	0.0	8.36	2.8		
09/15/2011	16:13:58	910	0.0	8.36	2.8		
09/15/2011	16:14:28	892	0.0	8.36	2.8		
09/15/2011	16:14:58	884	0.0	8.36	2.8		
09/15/2011	16:15:28	880	0.0	8.36	2.8		
09/15/2011	16:15:58	1893	0.0	8.36	2.8		
09/15/2011	16:16:28	2766	0.0	8.36	2.8		
09/15/2011	16:16:58	2994	0.0	8.36	2.8		
09/15/2011	16:17:28	2990	0.0	8.36	2.8		
09/15/2011	16:17:58	2988	0.0	8.36	2.8		
09/15/2011	16:18:28	2988	0.0	8.36	2.8		
09/15/2011	16:18:58	-7	0.1	8.36	2.8		
09/15/2011	16:19:28	-4	0.0	8.36	2.9		
09/15/2011	16:19:58	-5	0.0	8.36	2.9		
09/15/2011	16:20:28	-5	0.0	8.36	2.9		
09/15/2011	16:20:58	-5	0.0	8.36	2.9		
09/15/2011	16:21:28	11	1.2	8.36	2.9		
09/15/2011	16:21:58	43	2.1	8.35	3.9		
09/15/2011	16:22:28	43	1.4	8.36	4.2		
09/15/2011	16:22:58	52	2.7	8.36	5.5		
09/15/2011	16:23:28	54	2.7	8.36	6.8		
09/15/2011	16:23:58	52	2.7	8.35	8.2		
09/15/2011	16:24:28	52	2.7	8.35	9.6		
09/15/2011	16:24:58	53	2.7	8.36	11.0		
09/15/2011	16:25:28	53	2.7	8.36	12.3		
09/15/2011	16:25:58	4	0.0	8.36	13.3		
09/15/2011	16:26:28	5	0.0	8.36	13.3		
09/15/2011	16:26:58	7	0.0	8.36	13.3		
09/15/2011	16:27:28	3	0.0	8.36	13.3		
09/15/2011	16:27:58	5	0.0	8.36	13.3		
09/15/2011	16:28:28	5	0.0	8.36	13.3		
09/15/2011	16:28:58	6	0.0	8.36	13.3		
09/15/2011	16:29:28	28	1.7	11.86	13.5		

Well FED 25-5D FED 25-5D			Field S. PARACHUTE		Job Start Sep/15/2011	Customer ENCANA	Job Number BQMF-00146
Date	Time 24-hr clock	Treating Pressure PSI	Flow Rate B/M	Density LB/G	Volume BBL	Message	
09/15/2011	16:30:18					End Spacer	
09/15/2011	16:30:18	107	3.3	12.10	16.1		
09/15/2011	16:30:19					Start Cement Slurry	
09/15/2011	16:30:19	120	3.3	12.10	16.1		
09/15/2011	16:30:20					Start Mixing Scav Slurry	
09/15/2011	16:30:20	113	3.3	12.11	16.2		
09/15/2011	16:30:28	126	3.3	12.12	16.6		
09/15/2011	16:30:58	195	4.6	12.16	18.4		
09/15/2011	16:31:28	182	4.6	12.18	20.7		
09/15/2011	16:31:58	185	4.6	12.22	23.0		
09/15/2011	16:32:28	180	4.6	12.26	25.3		
09/15/2011	16:32:58	184	4.6	12.31	27.6		
09/15/2011	16:33:28	177	4.6	12.34	29.9		
09/15/2011	16:33:58	169	4.7	12.35	32.2		
09/15/2011	16:34:28	99	4.4	12.43	34.5		
09/15/2011	16:34:58	124	4.4	12.49	36.7		
09/15/2011	16:35:28	328	6.4	12.51	39.0		
09/15/2011	16:35:58	330	6.6	12.53	42.3		
09/15/2011	16:36:28	331	6.6	12.59	45.7		
09/15/2011	16:36:34					End Scavenger Slurry	
09/15/2011	16:36:34	339	6.6	12.60	46.3		
09/15/2011	16:36:35					Start Mixing Lead Slurry	
09/15/2011	16:36:35	336	6.6	12.60	46.4		
09/15/2011	16:36:36					Mixing and pumping 12.5ppg lead slurry.	
09/15/2011	16:36:36	339	6.6	12.61	46.5		
09/15/2011	16:36:37					Good returns.	
09/15/2011	16:36:37	335	6.6	12.61	46.6		
09/15/2011	16:36:58	338	6.6	12.62	49.0		
09/15/2011	16:37:28	334	6.6	12.61	52.3		
09/15/2011	16:37:58	348	6.6	12.61	55.6		
09/15/2011	16:38:28	349	6.6	12.62	58.9		
09/15/2011	16:38:58	326	6.6	12.59	62.2		
09/15/2011	16:39:28	329	6.6	12.59	65.5		
09/15/2011	16:39:58	332	6.6	12.58	68.8		
09/15/2011	16:40:28	337	6.6	12.57	72.1		
09/15/2011	16:40:58	324	6.6	12.57	75.4		
09/15/2011	16:41:28	339	6.6	12.57	78.7		
09/15/2011	16:41:58	332	6.6	12.55	82.0		
09/15/2011	16:42:28	329	6.6	12.56	85.4		
09/15/2011	16:42:58	337	6.6	12.50	88.7		
09/15/2011	16:43:28	340	6.7	12.38	92.0		
09/15/2011	16:43:58	313	6.6	12.37	95.3		
09/15/2011	16:44:28	105	3.5	12.38	98.3		
09/15/2011	16:44:55					End Lead Slurry	
09/15/2011	16:44:55	78	3.0	12.07	99.6		
09/15/2011	16:44:58					Pumped 229sks/86bbbls of 12.5ppg lead.	
09/15/2011	16:44:58					Good returns.	
09/15/2011	16:44:58	79	3.1	12.16	99.8		
09/15/2011	16:45:28	78	3.1	12.19	101.3		
09/15/2011	16:45:58	-5	0.0	12.20	101.8		
09/15/2011	16:46:28	-7	0.0	12.20	101.8		
09/15/2011	16:46:58	-6	0.0	12.22	101.8		
09/15/2011	16:47:28	-6	0.0	12.23	101.8		
09/15/2011	16:47:58	-5	0.0	12.24	101.8		

Well FED 25-5D FED 25-5D			Field S. PARACHUTE		Job Start Sep/15/2011	Customer ENCANA	Job Number BQMF-00146
Date	Time 24-hr clock	Treating Pressure PSI	Flow Rate B/M	Density LB/G	Volume BBL	Message	
09/15/2011	16:48:31					Start Mixing Tail Slurry	
09/15/2011	16:48:31	56	1.1	15.82	102.9		
09/15/2011	16:48:34					Mixing and pumping 15.8ppg tail slurry.	
09/15/2011	16:48:34	71	2.2	15.74	103.0		
09/15/2011	16:48:35					Good returns.	
09/15/2011	16:48:35	88	2.5	15.69	103.0		
09/15/2011	16:48:58	218	3.1	15.70	104.2		
09/15/2011	16:49:28	174	3.4	15.73	105.9		
09/15/2011	16:49:58	257	4.7	15.75	107.9		
09/15/2011	16:50:28	265	4.7	15.74	110.3		
09/15/2011	16:50:58	258	4.5	15.75	112.6		
09/15/2011	16:51:28	410	4.5	15.74	114.8		
09/15/2011	16:51:58	278	4.5	15.70	117.1		
09/15/2011	16:52:28	350	4.5	15.71	119.3		
09/15/2011	16:52:58	386	4.5	15.74	121.5		
09/15/2011	16:53:28					End Tail Slurry	
09/15/2011	16:53:28	181	4.5	15.73	123.8		
09/15/2011	16:53:30					End Cement Slurry	
09/15/2011	16:53:30	178	4.5	15.73	123.9		
09/15/2011	16:53:31					Pumped 150sks/31bbls of 15.8ppg tail.	
09/15/2011	16:53:31	385	4.5	15.73	124.0		
09/15/2011	16:53:32					Good returns.	
09/15/2011	16:53:32	150	4.5	15.73	124.1		
09/15/2011	16:53:33					Drop Top Plug	
09/15/2011	16:53:33	191	4.5	15.73	124.2		
09/15/2011	16:53:34					Start Displacement	
09/15/2011	16:53:34	416	4.5	15.73	124.2		
09/15/2011	16:53:36					Displace with fresh water.	
09/15/2011	16:53:36					Good returns.	
09/15/2011	16:53:36	302	4.4	15.73	124.4		
09/15/2011	16:53:58	167	4.5	15.71	126.0		
09/15/2011	16:54:28	366	4.5	15.92	128.3		
09/15/2011	16:54:58	264	4.5	15.93	130.5		
09/15/2011	16:55:28	176	3.3	15.89	132.5		
09/15/2011	16:55:58	105	2.8	15.86	134.0		
09/15/2011	16:56:28	-3	0.0	15.88	135.0		
09/15/2011	16:56:58	-2	0.0	15.87	135.0		
09/15/2011	16:57:28	-2	0.0	15.87	135.0		
09/15/2011	16:57:58	-2	0.0	15.87	135.0		
09/15/2011	16:58:28	-2	0.0	15.87	135.0		
09/15/2011	16:58:58	-1	0.0	15.88	135.0		
09/15/2011	16:59:28	1	0.0	15.88	135.0		
09/15/2011	16:59:58	1	0.0	15.89	135.0		
09/15/2011	17:00:28	1	0.0	15.77	135.0		
09/15/2011	17:00:58	-17	0.0	15.68	135.0		
09/15/2011	17:01:28	65	2.5	9.95	135.8		
09/15/2011	17:01:58	37	2.6	9.92	137.1		
09/15/2011	17:02:28	34	2.5	9.65	138.3		
09/15/2011	17:02:58	51	3.2	9.39	139.7		
09/15/2011	17:03:28	59	3.3	9.19	141.3		
09/15/2011	17:03:58	51	3.3	9.11	143.0		
09/15/2011	17:04:28	41	3.4	9.04	144.6		
09/15/2011	17:04:58	56	3.5	9.05	146.3		
09/15/2011	17:05:28	54	3.5	8.90	148.1		

Well FED 25-5D FED 25-5D			Field S. PARACHUTE		Job Start Sep/15/2011	Customer ENCANA	Job Number BQMF-00146
Date	Time 24-hr clock	Treating Pressure PSI	Flow Rate B/M	Density LB/G	Volume BBL	Message	
09/15/2011	17:06:28	81	4.6	8.83	152.5		
09/15/2011	17:06:58	109	4.6	8.81	154.8		
09/15/2011	17:07:28	125	4.7	8.52	157.1		
09/15/2011	17:07:58	100	4.7	8.34	159.5		
09/15/2011	17:08:28	64	4.6	8.36	161.8		
09/15/2011	17:08:58	82	4.6	8.36	164.1		
09/15/2011	17:09:28	75	4.6	8.36	166.4		
09/15/2011	17:09:58	209	6.7	8.36	169.3		
09/15/2011	17:10:28	226	6.7	8.36	172.7		
09/15/2011	17:10:58	221	6.7	8.36	176.0		
09/15/2011	17:11:28	234	6.7	8.36	179.3		
09/15/2011	17:11:58	247	6.7	8.36	182.7		
09/15/2011	17:12:28	266	6.7	8.36	186.0		
09/15/2011	17:12:39					10bbbls of contaminated mud.	
09/15/2011	17:12:39					56bbbls of good cement to surface.	
09/15/2011	17:12:39	278	6.7	8.36	187.2		
09/15/2011	17:12:58	282	6.7	8.36	189.4		
09/15/2011	17:13:28	276	6.7	8.36	192.7		
09/15/2011	17:13:58	312	6.7	8.36	196.0		
09/15/2011	17:14:28	327	6.7	8.36	199.4		
09/15/2011	17:14:58	322	6.7	8.36	202.7		
09/15/2011	17:15:28	237	4.7	8.36	205.2		
09/15/2011	17:15:58	284	4.7	8.36	207.5		
09/15/2011	17:16:28	271	4.7	8.36	209.9		
09/15/2011	17:16:58	219	2.4	8.37	212.0		
09/15/2011	17:17:28	221	2.4	8.36	213.1		
09/15/2011	17:17:58	241	2.4	8.36	214.3		
09/15/2011	17:18:28	238	2.4	8.36	215.5		
09/15/2011	17:18:58	242	2.4	8.37	216.7		
09/15/2011	17:19:28	257	2.4	8.36	217.8		
09/15/2011	17:19:58	257	2.4	8.37	219.0		
09/15/2011	17:20:28	265	2.4	8.37	220.2		
09/15/2011	17:20:58	266	2.4	8.37	221.4		
09/15/2011	17:21:28	284	2.4	8.37	222.6		
09/15/2011	17:21:58	285	2.3	8.37	223.7		
09/15/2011	17:22:10					Bump Top Plug	
09/15/2011	17:22:10	863	1.0	8.37	224.2		
09/15/2011	17:22:11					End Displacement	
09/15/2011	17:22:11	863	0.4	8.37	224.2		
09/15/2011	17:22:13					Bumped plug to 850psi.	
09/15/2011	17:22:13					Final displacement was 84.5bbbls.	
09/15/2011	17:22:13					Bleed off pressure.	
09/15/2011	17:22:13					Check floats.	
09/15/2011	17:22:13	861	0.1	8.37	224.2		
09/15/2011	17:22:14					Floats held.	
09/15/2011	17:22:14					Got 1bbl back.	
09/15/2011	17:22:14					Total expected cement was 47bbbls.	
09/15/2011	17:22:14					Actual cement to surface was 56bbbls.	
09/15/2011	17:22:14	866	0.0	8.37	224.2		
09/15/2011	17:22:15					Good returns for entire job.	
09/15/2011	17:22:15	856	0.0	8.37	224.2		
09/15/2011	17:22:28	856	0.0	8.37	224.2		
09/15/2011	17:22:58	857	0.0	8.37	224.2		
09/15/2011	17:23:28	857	0.0	8.37	224.2		

Well FED 25-5D FED 25-5D			Field S. PARACHUTE		Job Start Sep/15/2011		Customer ENCANA		Job Number BQMF-00146	
Date	Time 24-hr clock	Treating Pressure PSI	Flow Rate B/M	Density LB/G	Volume BBL	Message				
09/15/2011	17:24:28	857	0.0	8.37	224.2					
09/15/2011	17:24:58	829	0.0	8.37	224.2					
09/15/2011	17:25:28	-5	0.0	8.37	224.2					
09/15/2011	17:25:58	-8	0.0	8.37	224.2					
09/15/2011	17:26:28	-8	0.0	8.37	224.2					
09/15/2011	17:26:58	-8	0.0	8.37	224.2					
09/15/2011	17:27:28	-7	0.0	8.37	224.2					
09/15/2011	17:27:58	-7	0.0	8.37	224.2					
09/15/2011	17:28:28	-7	0.0	8.37	224.2					
09/15/2011	17:28:58	-6	0.0	8.37	224.2					
09/15/2011	17:29:06					End Job				

Post Job Summary

Average Pump Rates, bbl/min					Volume of Fluid Injected, bbl			
Slurry 6.0	N2	Mud	Maximum Rate 6.0	Total Slurry 117.0	Mud	Spacer 10.0	N2	
Treating Pressure Summary, psi					Breakdown Fluid			
Maximum 3000	Final 850	Average 200	Bump Plug to 850	Breakdown	Type	Volume	Density	
Avg. N2 Percent	Designed Slurry Volume 117.0 bbl		Displacement 84.0 bbl	Mix Water Temp 65 degF	Cement Circulated to Surface? <input checked="" type="checkbox"/>	Volume 56.0 bbl		
					Washed Thru Perfs <input type="checkbox"/>	To		
Customer or Authorized Representative ARVID MOSNES			Schlumberger Supervisor Jeff Patterson			Circulation Lost <input type="checkbox"/>	Job Completed <input checked="" type="checkbox"/>	
					-			