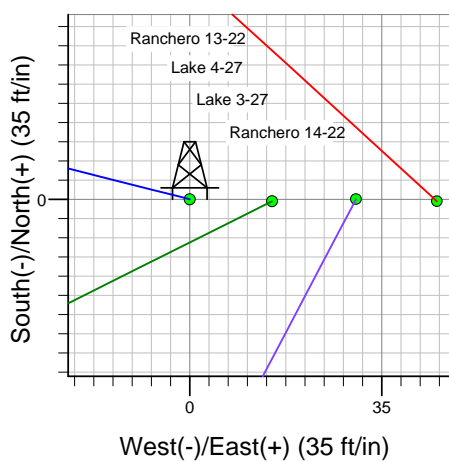
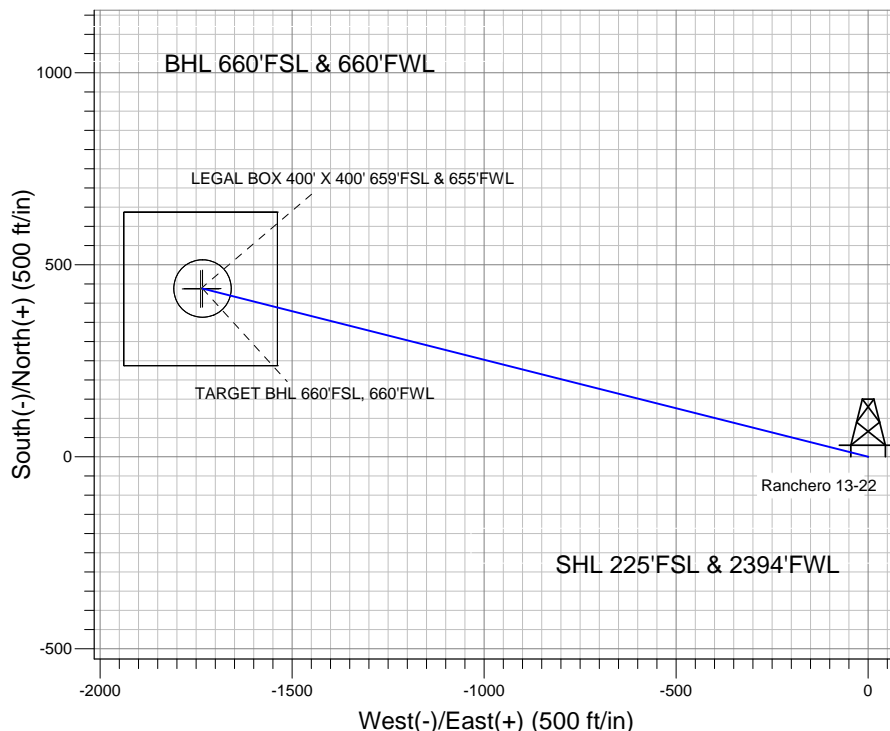
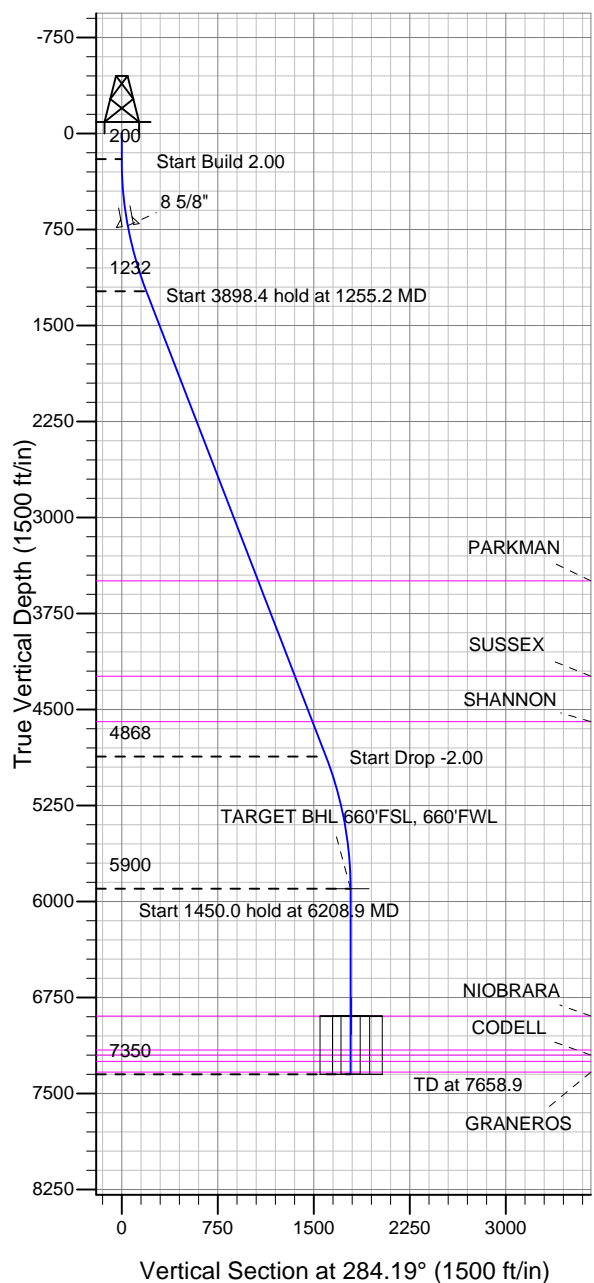


Well Name: Rancho 13-22

Surface Location: Lake - Rancho Pad Sec.22-T7N-R67W
 North American Datum 1983 US State Plane 1983 Colorado Northern Zone
 Ground Elevation: 5004.0
 +N/-S +E/-W Northing Easting Latitude Longitude Slot
 0.0 0.0 1444921.77 3172219.02 40.553058 -104.880238
 Original Well Elev WELL @ 5020.0ft (Original Well Elev)

BAYSWATER EXPLORATION & PRODUCTION



Lake - Rancho Pad Sec.22-T7N-R67W
 Rancho 13-22
 Plan #1 (4-09-12)
 13:38, April 11 2012



Azimuths to True North
 Magnetic North: 8.83°

Magnetic Field
 Strength: 53110.7snT
 Dip Angle: 67.13°
 Date: 4/11/2012
 Model: IGRF2010

WELLBORE TARGET DETAILS (LAT/LONG)

Name	TVD	+N/-S	+E/-W	Latitude	Longitude	Shape
TARGET BHL 660'FSL, 660'FWL	5900.0	438.3	-1733.4	40.554261	-104.886476	Point
LEGAL BOX 400' X 400' 659'FSL & 655'FWL	6895.0	437.3	-1738.4	40.554258	-104.886494	Rectangle (Sides: L400.0 W400.0)
TARGET CIRCLE 660'FSL & 660'FWL	6895.0	438.3	-1733.4	40.554261	-104.886476	Circle (Radius: 75.0)

SECTION DETAILS

Sec	MD	Inc	Azi	TVD	+N/-S	+E/-W	DLeg	TFace	VSec	Target
1	0.0	0.00	0.00	0.0	0.0	0.0	0.00	0.00	0.0	
2	200.0	0.00	0.00	200.0	0.0	0.0	0.00	0.00	0.0	
3	1255.2	21.10	284.19	1231.5	47.1	-186.3	2.00	284.19	192.2	
4	5153.7	21.10	284.19	4868.5	391.2	-1547.2	0.00	0.00	1595.9	
5	6208.9	0.00	0.00	5900.0	438.3	-1733.4	2.00	180.00	1788.0	TARGET BHL 660'FSL, 660'FWL
6	7658.9	0.00	0.00	7350.0	438.3	-1733.4	0.00	0.00	1788.0	



Directional

BAYSWATER EXPLORATION & PRODUCTION

SEC.22-T7N-R67W

Lake - Rancho Pad Sec.22-T7N-R67W

Rancho 13-22

Wellbore #1

Plan: Plan #1 (4-09-12)

Standard Planning Report

11 April, 2012

Plan Sections										
Measured Depth (ft)	Inclination (°)	Azimuth (°)	Vertical Depth (ft)	+N/-S (ft)	+E/-W (ft)	Dogleg Rate (°/100ft)	Build Rate (°/100ft)	Turn Rate (°/100ft)	TFO (°)	Target
0.0	0.00	0.00	0.0	0.0	0.0	0.00	0.00	0.00	0.00	
200.0	0.00	0.00	200.0	0.0	0.0	0.00	0.00	0.00	0.00	
1,255.2	21.10	284.19	1,231.5	47.1	-186.3	2.00	2.00	0.00	284.19	
5,153.7	21.10	284.19	4,868.5	391.2	-1,547.2	0.00	0.00	0.00	0.00	
6,208.9	0.00	0.00	5,900.0	438.3	-1,733.4	2.00	-2.00	0.00	180.00	TARGET BHL 660°
7,658.9	0.00	0.00	7,350.0	438.3	-1,733.4	0.00	0.00	0.00	0.00	

Database:	Landmark	Local Co-ordinate Reference:	Well Ranchero 13-22
Company:	BAYSWATER EXPLORATION & PRODUCTION	TVD Reference:	WELL @ 5020.0ft (Original Well Elev)
Project:	SEC.22-T7N-R67W	MD Reference:	WELL @ 5020.0ft (Original Well Elev)
Site:	Lake - Ranchero Pad Sec.22-T7N-R67W	North Reference:	True
Well:	Ranchero 13-22	Survey Calculation Method:	Minimum Curvature
Wellbore:	Wellbore #1		
Design:	Plan #1 (4-09-12)		

Planned Survey									
Measured Depth (ft)	Inclination (°)	Azimuth (°)	Vertical Depth (ft)	+N/-S (ft)	+E/-W (ft)	Vertical Section (ft)	Dogleg Rate (°/100ft)	Build Rate (°/100ft)	Turn Rate (°/100ft)
0.0	0.00	0.00	0.0	0.0	0.0	0.0	0.00	0.00	0.00
40.0	0.00	0.00	40.0	0.0	0.0	0.0	0.00	0.00	0.00
80.0	0.00	0.00	80.0	0.0	0.0	0.0	0.00	0.00	0.00
120.0	0.00	0.00	120.0	0.0	0.0	0.0	0.00	0.00	0.00
160.0	0.00	0.00	160.0	0.0	0.0	0.0	0.00	0.00	0.00
200.0	0.00	0.00	200.0	0.0	0.0	0.0	0.00	0.00	0.00
240.0	0.80	284.19	240.0	0.1	-0.3	0.3	2.00	2.00	0.00
280.0	1.60	284.19	280.0	0.3	-1.1	1.1	2.00	2.00	0.00
320.0	2.40	284.19	320.0	0.6	-2.4	2.5	2.00	2.00	0.00
360.0	3.20	284.19	359.9	1.1	-4.3	4.5	2.00	2.00	0.00
400.0	4.00	284.19	399.8	1.7	-6.8	7.0	2.00	2.00	0.00
440.0	4.80	284.19	439.7	2.5	-9.7	10.0	2.00	2.00	0.00
480.0	5.60	284.19	479.6	3.4	-13.3	13.7	2.00	2.00	0.00
520.0	6.40	284.19	519.3	4.4	-17.3	17.9	2.00	2.00	0.00
560.0	7.20	284.19	559.1	5.5	-21.9	22.6	2.00	2.00	0.00
600.0	8.00	284.19	598.7	6.8	-27.0	27.9	2.00	2.00	0.00
640.0	8.80	284.19	638.3	8.3	-32.7	33.7	2.00	2.00	0.00
680.0	9.60	284.19	677.8	9.8	-38.9	40.1	2.00	2.00	0.00
720.0	10.40	284.19	717.1	11.5	-45.6	47.1	2.00	2.00	0.00
722.9	10.46	284.19	720.0	11.7	-46.1	47.6	2.00	2.00	0.00
8 5/8"									
760.0	11.20	284.19	756.4	13.4	-52.9	54.6	2.00	2.00	0.00
800.0	12.00	284.19	795.6	15.3	-60.7	62.6	2.00	2.00	0.00
840.0	12.80	284.19	834.7	17.5	-69.0	71.2	2.00	2.00	0.00
880.0	13.60	284.19	873.6	19.7	-77.9	80.3	2.00	2.00	0.00
920.0	14.40	284.19	912.4	22.1	-87.3	90.0	2.00	2.00	0.00
960.0	15.20	284.19	951.1	24.6	-97.2	100.2	2.00	2.00	0.00
1,000.0	16.00	284.19	989.6	27.2	-107.6	111.0	2.00	2.00	0.00
1,040.0	16.80	284.19	1,028.0	30.0	-118.5	122.3	2.00	2.00	0.00
1,080.0	17.60	284.19	1,066.2	32.9	-130.0	134.1	2.00	2.00	0.00
1,120.0	18.40	284.19	1,104.3	35.9	-142.0	146.5	2.00	2.00	0.00
1,160.0	19.20	284.19	1,142.1	39.1	-154.5	159.3	2.00	2.00	0.00
1,200.0	20.00	284.19	1,179.8	42.4	-167.5	172.8	2.00	2.00	0.00
1,240.0	20.80	284.19	1,217.3	45.8	-181.0	186.7	2.00	2.00	0.00
1,255.2	21.10	284.19	1,231.5	47.1	-186.3	192.2	2.00	2.00	0.00
1,280.0	21.10	284.19	1,254.6	49.3	-194.9	201.1	0.00	0.00	0.00
1,320.0	21.10	284.19	1,292.0	52.8	-208.9	215.5	0.00	0.00	0.00
1,360.0	21.10	284.19	1,329.3	56.4	-222.9	229.9	0.00	0.00	0.00
1,400.0	21.10	284.19	1,366.6	59.9	-236.8	244.3	0.00	0.00	0.00
1,440.0	21.10	284.19	1,403.9	63.4	-250.8	258.7	0.00	0.00	0.00
1,480.0	21.10	284.19	1,441.2	67.0	-264.8	273.1	0.00	0.00	0.00
1,520.0	21.10	284.19	1,478.5	70.5	-278.7	287.5	0.00	0.00	0.00
1,560.0	21.10	284.19	1,515.9	74.0	-292.7	301.9	0.00	0.00	0.00
1,600.0	21.10	284.19	1,553.2	77.5	-306.6	316.3	0.00	0.00	0.00
1,640.0	21.10	284.19	1,590.5	81.1	-320.6	330.7	0.00	0.00	0.00
1,680.0	21.10	284.19	1,627.8	84.6	-334.6	345.1	0.00	0.00	0.00
1,720.0	21.10	284.19	1,665.1	88.1	-348.5	359.5	0.00	0.00	0.00
1,760.0	21.10	284.19	1,702.4	91.7	-362.5	373.9	0.00	0.00	0.00
1,800.0	21.10	284.19	1,739.8	95.2	-376.5	388.3	0.00	0.00	0.00
1,840.0	21.10	284.19	1,777.1	98.7	-390.4	402.7	0.00	0.00	0.00
1,880.0	21.10	284.19	1,814.4	102.3	-404.4	417.1	0.00	0.00	0.00
1,920.0	21.10	284.19	1,851.7	105.8	-418.4	431.5	0.00	0.00	0.00
1,960.0	21.10	284.19	1,889.0	109.3	-432.3	445.9	0.00	0.00	0.00

Database:	Landmark	Local Co-ordinate Reference:	Well Ranchero 13-22
Company:	BAYSWATER EXPLORATION & PRODUCTION	TVD Reference:	WELL @ 5020.0ft (Original Well Elev)
Project:	SEC.22-T7N-R67W	MD Reference:	WELL @ 5020.0ft (Original Well Elev)
Site:	Lake - Ranchero Pad Sec.22-T7N-R67W	North Reference:	True
Well:	Ranchero 13-22	Survey Calculation Method:	Minimum Curvature
Wellbore:	Wellbore #1		
Design:	Plan #1 (4-09-12)		

Planned Survey									
Measured Depth (ft)	Inclination (°)	Azimuth (°)	Vertical Depth (ft)	+N/-S (ft)	+E/-W (ft)	Vertical Section (ft)	Dogleg Rate (°/100ft)	Build Rate (°/100ft)	Turn Rate (°/100ft)
2,000.0	21.10	284.19	1,926.3	112.9	-446.3	460.3	0.00	0.00	0.00
2,040.0	21.10	284.19	1,963.7	116.4	-460.2	474.7	0.00	0.00	0.00
2,080.0	21.10	284.19	2,001.0	119.9	-474.2	489.1	0.00	0.00	0.00
2,120.0	21.10	284.19	2,038.3	123.4	-488.2	503.5	0.00	0.00	0.00
2,160.0	21.10	284.19	2,075.6	127.0	-502.1	517.9	0.00	0.00	0.00
2,200.0	21.10	284.19	2,112.9	130.5	-516.1	532.3	0.00	0.00	0.00
2,240.0	21.10	284.19	2,150.2	134.0	-530.1	546.7	0.00	0.00	0.00
2,280.0	21.10	284.19	2,187.6	137.6	-544.0	561.1	0.00	0.00	0.00
2,320.0	21.10	284.19	2,224.9	141.1	-558.0	575.5	0.00	0.00	0.00
2,360.0	21.10	284.19	2,262.2	144.6	-571.9	589.9	0.00	0.00	0.00
2,400.0	21.10	284.19	2,299.5	148.2	-585.9	604.4	0.00	0.00	0.00
2,440.0	21.10	284.19	2,336.8	151.7	-599.9	618.8	0.00	0.00	0.00
2,480.0	21.10	284.19	2,374.1	155.2	-613.8	633.2	0.00	0.00	0.00
2,520.0	21.10	284.19	2,411.5	158.8	-627.8	647.6	0.00	0.00	0.00
2,560.0	21.10	284.19	2,448.8	162.3	-641.8	662.0	0.00	0.00	0.00
2,600.0	21.10	284.19	2,486.1	165.8	-655.7	676.4	0.00	0.00	0.00
2,640.0	21.10	284.19	2,523.4	169.3	-669.7	690.8	0.00	0.00	0.00
2,680.0	21.10	284.19	2,560.7	172.9	-683.7	705.2	0.00	0.00	0.00
2,720.0	21.10	284.19	2,598.1	176.4	-697.6	719.6	0.00	0.00	0.00
2,760.0	21.10	284.19	2,635.4	179.9	-711.6	734.0	0.00	0.00	0.00
2,800.0	21.10	284.19	2,672.7	183.5	-725.5	748.4	0.00	0.00	0.00
2,840.0	21.10	284.19	2,710.0	187.0	-739.5	762.8	0.00	0.00	0.00
2,880.0	21.10	284.19	2,747.3	190.5	-753.5	777.2	0.00	0.00	0.00
2,920.0	21.10	284.19	2,784.6	194.1	-767.4	791.6	0.00	0.00	0.00
2,960.0	21.10	284.19	2,822.0	197.6	-781.4	806.0	0.00	0.00	0.00
3,000.0	21.10	284.19	2,859.3	201.1	-795.4	820.4	0.00	0.00	0.00
3,040.0	21.10	284.19	2,896.6	204.7	-809.3	834.8	0.00	0.00	0.00
3,080.0	21.10	284.19	2,933.9	208.2	-823.3	849.2	0.00	0.00	0.00
3,120.0	21.10	284.19	2,971.2	211.7	-837.2	863.6	0.00	0.00	0.00
3,160.0	21.10	284.19	3,008.5	215.3	-851.2	878.0	0.00	0.00	0.00
3,200.0	21.10	284.19	3,045.9	218.8	-865.2	892.4	0.00	0.00	0.00
3,240.0	21.10	284.19	3,083.2	222.3	-879.1	906.8	0.00	0.00	0.00
3,280.0	21.10	284.19	3,120.5	225.8	-893.1	921.2	0.00	0.00	0.00
3,320.0	21.10	284.19	3,157.8	229.4	-907.1	935.6	0.00	0.00	0.00
3,360.0	21.10	284.19	3,195.1	232.9	-921.0	950.0	0.00	0.00	0.00
3,400.0	21.10	284.19	3,232.4	236.4	-935.0	964.4	0.00	0.00	0.00
3,440.0	21.10	284.19	3,269.8	240.0	-949.0	978.8	0.00	0.00	0.00
3,480.0	21.10	284.19	3,307.1	243.5	-962.9	993.2	0.00	0.00	0.00
3,520.0	21.10	284.19	3,344.4	247.0	-976.9	1,007.6	0.00	0.00	0.00
3,560.0	21.10	284.19	3,381.7	250.6	-990.8	1,022.0	0.00	0.00	0.00
3,600.0	21.10	284.19	3,419.0	254.1	-1,004.8	1,036.4	0.00	0.00	0.00
3,640.0	21.10	284.19	3,456.3	257.6	-1,018.8	1,050.8	0.00	0.00	0.00
3,680.0	21.10	284.19	3,493.7	261.2	-1,032.7	1,065.2	0.00	0.00	0.00
3,681.4	21.10	284.19	3,495.0	261.3	-1,033.2	1,065.8	0.00	0.00	0.00
PARKMAN									
3,720.0	21.10	284.19	3,531.0	264.7	-1,046.7	1,079.6	0.00	0.00	0.00
3,760.0	21.10	284.19	3,568.3	268.2	-1,060.7	1,094.0	0.00	0.00	0.00
3,800.0	21.10	284.19	3,605.6	271.7	-1,074.6	1,108.4	0.00	0.00	0.00
3,840.0	21.10	284.19	3,642.9	275.3	-1,088.6	1,122.9	0.00	0.00	0.00
3,880.0	21.10	284.19	3,680.2	278.8	-1,102.5	1,137.3	0.00	0.00	0.00
3,920.0	21.10	284.19	3,717.6	282.3	-1,116.5	1,151.7	0.00	0.00	0.00
3,960.0	21.10	284.19	3,754.9	285.9	-1,130.5	1,166.1	0.00	0.00	0.00
4,000.0	21.10	284.19	3,792.2	289.4	-1,144.4	1,180.5	0.00	0.00	0.00

Database:	Landmark	Local Co-ordinate Reference:	Well Ranchero 13-22
Company:	BAYSWATER EXPLORATION & PRODUCTION	TVD Reference:	WELL @ 5020.0ft (Original Well Elev)
Project:	SEC.22-T7N-R67W	MD Reference:	WELL @ 5020.0ft (Original Well Elev)
Site:	Lake - Ranchero Pad Sec.22-T7N-R67W	North Reference:	True
Well:	Ranchero 13-22	Survey Calculation Method:	Minimum Curvature
Wellbore:	Wellbore #1		
Design:	Plan #1 (4-09-12)		

Planned Survey									
Measured Depth (ft)	Inclination (°)	Azimuth (°)	Vertical Depth (ft)	+N/-S (ft)	+E/-W (ft)	Vertical Section (ft)	Dogleg Rate (°/100ft)	Build Rate (°/100ft)	Turn Rate (°/100ft)
4,040.0	21.10	284.19	3,829.5	292.9	-1,158.4	1,194.9	0.00	0.00	0.00
4,080.0	21.10	284.19	3,866.8	296.5	-1,172.4	1,209.3	0.00	0.00	0.00
4,120.0	21.10	284.19	3,904.1	300.0	-1,186.3	1,223.7	0.00	0.00	0.00
4,160.0	21.10	284.19	3,941.5	303.5	-1,200.3	1,238.1	0.00	0.00	0.00
4,200.0	21.10	284.19	3,978.8	307.1	-1,214.3	1,252.5	0.00	0.00	0.00
4,240.0	21.10	284.19	4,016.1	310.6	-1,228.2	1,266.9	0.00	0.00	0.00
4,280.0	21.10	284.19	4,053.4	314.1	-1,242.2	1,281.3	0.00	0.00	0.00
4,320.0	21.10	284.19	4,090.7	317.6	-1,256.1	1,295.7	0.00	0.00	0.00
4,360.0	21.10	284.19	4,128.0	321.2	-1,270.1	1,310.1	0.00	0.00	0.00
4,400.0	21.10	284.19	4,165.4	324.7	-1,284.1	1,324.5	0.00	0.00	0.00
4,440.0	21.10	284.19	4,202.7	328.2	-1,298.0	1,338.9	0.00	0.00	0.00
4,480.0	21.10	284.19	4,240.0	331.8	-1,312.0	1,353.3	0.00	0.00	0.00
SUSSEX									
4,520.0	21.10	284.19	4,277.3	335.3	-1,326.0	1,367.7	0.00	0.00	0.00
4,560.0	21.10	284.19	4,314.6	338.8	-1,339.9	1,382.1	0.00	0.00	0.00
4,600.0	21.10	284.19	4,352.0	342.4	-1,353.9	1,396.5	0.00	0.00	0.00
4,640.0	21.10	284.19	4,389.3	345.9	-1,367.8	1,410.9	0.00	0.00	0.00
4,680.0	21.10	284.19	4,426.6	349.4	-1,381.8	1,425.3	0.00	0.00	0.00
4,720.0	21.10	284.19	4,463.9	353.0	-1,395.8	1,439.7	0.00	0.00	0.00
4,760.0	21.10	284.19	4,501.2	356.5	-1,409.7	1,454.1	0.00	0.00	0.00
4,800.0	21.10	284.19	4,538.5	360.0	-1,423.7	1,468.5	0.00	0.00	0.00
4,840.0	21.10	284.19	4,575.9	363.6	-1,437.7	1,482.9	0.00	0.00	0.00
4,860.5	21.10	284.19	4,595.0	365.4	-1,444.8	1,490.3	0.00	0.00	0.00
SHANNON									
4,880.0	21.10	284.19	4,613.2	367.1	-1,451.6	1,497.3	0.00	0.00	0.00
4,920.0	21.10	284.19	4,650.5	370.6	-1,465.6	1,511.7	0.00	0.00	0.00
4,960.0	21.10	284.19	4,687.8	374.1	-1,479.6	1,526.1	0.00	0.00	0.00
5,000.0	21.10	284.19	4,725.1	377.7	-1,493.5	1,540.5	0.00	0.00	0.00
5,040.0	21.10	284.19	4,762.4	381.2	-1,507.5	1,554.9	0.00	0.00	0.00
5,080.0	21.10	284.19	4,799.8	384.7	-1,521.4	1,569.3	0.00	0.00	0.00
5,120.0	21.10	284.19	4,837.1	388.3	-1,535.4	1,583.7	0.00	0.00	0.00
5,153.7	21.10	284.19	4,868.5	391.2	-1,547.2	1,595.9	0.00	0.00	0.00
5,160.0	20.98	284.19	4,874.4	391.8	-1,549.4	1,598.1	2.00	-2.00	0.00
5,200.0	20.18	284.19	4,911.8	395.2	-1,563.0	1,612.2	2.00	-2.00	0.00
5,240.0	19.38	284.19	4,949.5	398.6	-1,576.1	1,625.7	2.00	-2.00	0.00
5,280.0	18.58	284.19	4,987.3	401.8	-1,588.7	1,638.7	2.00	-2.00	0.00
5,320.0	17.78	284.19	5,025.3	404.8	-1,600.8	1,651.2	2.00	-2.00	0.00
5,360.0	16.98	284.19	5,063.5	407.7	-1,612.4	1,663.2	2.00	-2.00	0.00
5,400.0	16.18	284.19	5,101.8	410.5	-1,623.5	1,674.6	2.00	-2.00	0.00
5,440.0	15.38	284.19	5,140.3	413.2	-1,634.0	1,685.5	2.00	-2.00	0.00
5,480.0	14.58	284.19	5,179.0	415.7	-1,644.0	1,695.8	2.00	-2.00	0.00
5,520.0	13.78	284.19	5,217.7	418.1	-1,653.5	1,705.6	2.00	-2.00	0.00
5,560.0	12.98	284.19	5,256.6	420.4	-1,662.5	1,714.8	2.00	-2.00	0.00
5,600.0	12.18	284.19	5,295.7	422.5	-1,671.0	1,723.6	2.00	-2.00	0.00
5,640.0	11.38	284.19	5,334.8	424.5	-1,678.9	1,731.7	2.00	-2.00	0.00
5,680.0	10.58	284.19	5,374.1	426.4	-1,686.3	1,739.3	2.00	-2.00	0.00
5,720.0	9.78	284.19	5,413.5	428.1	-1,693.1	1,746.4	2.00	-2.00	0.00
5,760.0	8.98	284.19	5,452.9	429.7	-1,699.4	1,752.9	2.00	-2.00	0.00
5,800.0	8.18	284.19	5,492.5	431.2	-1,705.2	1,758.9	2.00	-2.00	0.00
5,840.0	7.38	284.19	5,532.1	432.5	-1,710.5	1,764.3	2.00	-2.00	0.00
5,880.0	6.58	284.19	5,571.8	433.7	-1,715.2	1,769.2	2.00	-2.00	0.00
5,920.0	5.78	284.19	5,611.6	434.8	-1,719.3	1,773.5	2.00	-2.00	0.00
5,960.0	4.98	284.19	5,651.4	435.7	-1,723.0	1,777.2	2.00	-2.00	0.00

Database:	Landmark	Local Co-ordinate Reference:	Well Ranchero 13-22
Company:	BAYSWATER EXPLORATION & PRODUCTION	TVD Reference:	WELL @ 5020.0ft (Original Well Elev)
Project:	SEC.22-T7N-R67W	MD Reference:	WELL @ 5020.0ft (Original Well Elev)
Site:	Lake - Ranchero Pad Sec.22-T7N-R67W	North Reference:	True
Well:	Ranchero 13-22	Survey Calculation Method:	Minimum Curvature
Wellbore:	Wellbore #1		
Design:	Plan #1 (4-09-12)		

Planned Survey

Measured Depth (ft)	Inclination (°)	Azimuth (°)	Vertical Depth (ft)	+N/-S (ft)	+E/-W (ft)	Vertical Section (ft)	Dogleg Rate (°/100ft)	Build Rate (°/100ft)	Turn Rate (°/100ft)
6,000.0	4.18	284.19	5,691.3	436.5	-1,726.1	1,780.4	2.00	-2.00	0.00
6,040.0	3.38	284.19	5,731.2	437.1	-1,728.6	1,783.0	2.00	-2.00	0.00
6,080.0	2.58	284.19	5,771.2	437.6	-1,730.6	1,785.1	2.00	-2.00	0.00
6,120.0	1.78	284.19	5,811.1	438.0	-1,732.1	1,786.6	2.00	-2.00	0.00
6,160.0	0.98	284.19	5,851.1	438.2	-1,733.0	1,787.6	2.00	-2.00	0.00
6,200.0	0.18	284.19	5,891.1	438.3	-1,733.4	1,788.0	2.00	-2.00	0.00
6,208.9	0.00	0.00	5,900.0	438.3	-1,733.4	1,788.0	2.00	-2.00	0.00
TARGET BHL 660'FSL, 660'FWL									
6,240.0	0.00	0.00	5,931.1	438.3	-1,733.4	1,788.0	0.00	0.00	0.00
6,280.0	0.00	0.00	5,971.1	438.3	-1,733.4	1,788.0	0.00	0.00	0.00
6,320.0	0.00	0.00	6,011.1	438.3	-1,733.4	1,788.0	0.00	0.00	0.00
6,360.0	0.00	0.00	6,051.1	438.3	-1,733.4	1,788.0	0.00	0.00	0.00
6,400.0	0.00	0.00	6,091.1	438.3	-1,733.4	1,788.0	0.00	0.00	0.00
6,440.0	0.00	0.00	6,131.1	438.3	-1,733.4	1,788.0	0.00	0.00	0.00
6,480.0	0.00	0.00	6,171.1	438.3	-1,733.4	1,788.0	0.00	0.00	0.00
6,520.0	0.00	0.00	6,211.1	438.3	-1,733.4	1,788.0	0.00	0.00	0.00
6,560.0	0.00	0.00	6,251.1	438.3	-1,733.4	1,788.0	0.00	0.00	0.00
6,600.0	0.00	0.00	6,291.1	438.3	-1,733.4	1,788.0	0.00	0.00	0.00
6,640.0	0.00	0.00	6,331.1	438.3	-1,733.4	1,788.0	0.00	0.00	0.00
6,680.0	0.00	0.00	6,371.1	438.3	-1,733.4	1,788.0	0.00	0.00	0.00
6,720.0	0.00	0.00	6,411.1	438.3	-1,733.4	1,788.0	0.00	0.00	0.00
6,760.0	0.00	0.00	6,451.1	438.3	-1,733.4	1,788.0	0.00	0.00	0.00
6,800.0	0.00	0.00	6,491.1	438.3	-1,733.4	1,788.0	0.00	0.00	0.00
6,840.0	0.00	0.00	6,531.1	438.3	-1,733.4	1,788.0	0.00	0.00	0.00
6,880.0	0.00	0.00	6,571.1	438.3	-1,733.4	1,788.0	0.00	0.00	0.00
6,920.0	0.00	0.00	6,611.1	438.3	-1,733.4	1,788.0	0.00	0.00	0.00
6,960.0	0.00	0.00	6,651.1	438.3	-1,733.4	1,788.0	0.00	0.00	0.00
7,000.0	0.00	0.00	6,691.1	438.3	-1,733.4	1,788.0	0.00	0.00	0.00
7,040.0	0.00	0.00	6,731.1	438.3	-1,733.4	1,788.0	0.00	0.00	0.00
7,080.0	0.00	0.00	6,771.1	438.3	-1,733.4	1,788.0	0.00	0.00	0.00
7,120.0	0.00	0.00	6,811.1	438.3	-1,733.4	1,788.0	0.00	0.00	0.00
7,160.0	0.00	0.00	6,851.1	438.3	-1,733.4	1,788.0	0.00	0.00	0.00
7,200.0	0.00	0.00	6,891.1	438.3	-1,733.4	1,788.0	0.00	0.00	0.00
7,203.9	0.00	0.00	6,895.0	438.3	-1,733.4	1,788.0	0.00	0.00	0.00
NIOBRARA - TARGET CIRCLE 660'FSL & 660'FWL - LEGAL BOX 400' X 400' 659'FSL & 655'FWL									
7,240.0	0.00	0.00	6,931.1	438.3	-1,733.4	1,788.0	0.00	0.00	0.00
7,280.0	0.00	0.00	6,971.1	438.3	-1,733.4	1,788.0	0.00	0.00	0.00
7,320.0	0.00	0.00	7,011.1	438.3	-1,733.4	1,788.0	0.00	0.00	0.00
7,360.0	0.00	0.00	7,051.1	438.3	-1,733.4	1,788.0	0.00	0.00	0.00
7,400.0	0.00	0.00	7,091.1	438.3	-1,733.4	1,788.0	0.00	0.00	0.00
7,440.0	0.00	0.00	7,131.1	438.3	-1,733.4	1,788.0	0.00	0.00	0.00
7,468.9	0.00	0.00	7,160.0	438.3	-1,733.4	1,788.0	0.00	0.00	0.00
FT. HAYS									
7,480.0	0.00	0.00	7,171.1	438.3	-1,733.4	1,788.0	0.00	0.00	0.00
7,508.9	0.00	0.00	7,200.0	438.3	-1,733.4	1,788.0	0.00	0.00	0.00
CODELL									
7,520.0	0.00	0.00	7,211.1	438.3	-1,733.4	1,788.0	0.00	0.00	0.00
7,556.9	0.00	0.00	7,248.0	438.3	-1,733.4	1,788.0	0.00	0.00	0.00
GREENHORN									
7,560.0	0.00	0.00	7,251.1	438.3	-1,733.4	1,788.0	0.00	0.00	0.00
7,600.0	0.00	0.00	7,291.1	438.3	-1,733.4	1,788.0	0.00	0.00	0.00
7,640.0	0.00	0.00	7,331.1	438.3	-1,733.4	1,788.0	0.00	0.00	0.00

Database:	Landmark	Local Co-ordinate Reference:	Well Ranchero 13-22
Company:	BAYSWATER EXPLORATION & PRODUCTION	TVD Reference:	WELL @ 5020.0ft (Original Well Elev)
Project:	SEC.22-T7N-R67W	MD Reference:	WELL @ 5020.0ft (Original Well Elev)
Site:	Lake - Ranchero Pad Sec.22-T7N-R67W	North Reference:	True
Well:	Ranchero 13-22	Survey Calculation Method:	Minimum Curvature
Wellbore:	Wellbore #1		
Design:	Plan #1 (4-09-12)		

Planned Survey									
Measured Depth (ft)	Inclination (°)	Azimuth (°)	Vertical Depth (ft)	+N/-S (ft)	+E/-W (ft)	Vertical Section (ft)	Dogleg Rate (°/100ft)	Build Rate (°/100ft)	Turn Rate (°/100ft)
7,640.9	0.00	0.00	7,332.0	438.3	-1,733.4	1,788.0	0.00	0.00	0.00
GRANEROS									
7,658.9	0.00	0.00	7,350.0	438.3	-1,733.4	1,788.0	0.00	0.00	0.00

Casing Points				
Measured Depth (ft)	Vertical Depth (ft)	Name	Casing Diameter (")	Hole Diameter (")
722.9	720.0	8 5/8"	8-5/8	12-1/4

Formations					
Measured Depth (ft)	Vertical Depth (ft)	Name	Lithology	Dip (°)	Dip Direction (°)
3,681.4	3,495.0	PARKMAN		0.00	
4,480.0	4,240.0	SUSSEX		0.00	
4,860.5	4,595.0	SHANNON		0.00	
7,203.9	6,895.0	NIOBRARA		0.00	
7,468.9	7,160.0	FT. HAYS		0.00	
7,508.9	7,200.0	CODELL		0.00	
7,556.9	7,248.0	GREENHORN		0.00	
7,640.9	7,332.0	GRANEROS		0.00	



Directional

BAYSWATER EXPLORATION & PRODUCTION

SEC.22-T7N-R67W

Lake - Rancho Pad Sec.22-T7N-R67W

Rancho 13-22

Wellbore #1

Plan #1 (4-09-12)

Anticollision Report

11 April, 2012

Company:	BAYSWATER EXPLORATION & PRODUCTION	Local Co-ordinate Reference:	Well Ranchero 13-22
Project:	SEC.22-T7N-R67W	TVD Reference:	WELL @ 5020.0ft (Original Well Elev)
Reference Site:	Lake - Ranchero Pad Sec.22-T7N-R67W	MD Reference:	WELL @ 5020.0ft (Original Well Elev)
Site Error:	0.0ft	North Reference:	True
Reference Well:	Ranchero 13-22	Survey Calculation Method:	Minimum Curvature
Well Error:	0.0ft	Output errors are at	2.00 sigma
Reference Wellbore	Wellbore #1	Database:	Landmark
Reference Design:	Plan #1 (4-09-12)	Offset TVD Reference:	Offset Datum

Reference	Plan #1 (4-09-12)		
Filter type:	NO GLOBAL FILTER: Using user defined selection & filtering criteria		
Interpolation Method:	Stations	Error Model:	ISCWSA
Depth Range:	Unlimited	Scan Method:	Closest Approach 3D
Results Limited by:	Maximum center-center distance of 10,000.0ft	Error Surface:	Elliptical Conic
Warning Levels Evaluated at:	2.00 Sigma		

Survey Tool Program	Date 4/11/2012			
From (ft)	To (ft)	Survey (Wellbore)	Tool Name	Description
0.0	7,658.9	Plan #1 (4-09-12) (Wellbore #1)	MWD	MWD - Standard

Summary						
Site Name	Reference Measured Depth (ft)	Offset Measured Depth (ft)	Distance Between Centres (ft)	Separation Between Ellipses (ft)	Warning	
Offset Well - Wellbore - Design						
Lake - Ranchero Pad Sec.22-T7N-R67W						
Lake 4-27 - Wellbore #1 - Plan #1 (4-09-12)	200.0	200.0	15.0	14.3	22.261 CC, ES	
Lake 4-27 - Wellbore #1 - Plan #1 (4-09-12)	400.0	399.8	21.9	20.3	13.896 SF	

Offset Design		Lake - Ranchero Pad Sec.22-T7N-R67W - Lake 4-27 - Wellbore #1 - Plan #1 (4-09-12)										Offset Site Error:		0.0 ft
Survey Program: 0-MWD												Offset Well Error:		0.0 ft
Reference		Offset		Semi Major Axis		Distance								
Measured Depth	Vertical Depth	Measured Depth	Vertical Depth	Reference	Offset	Highside Toolface	Offset Wellbore Centre		Between Centres	Between Ellipses	Minimum Separation	Separation Factor	Warning	
(ft)	(ft)	(ft)	(ft)	(ft)	(ft)	(°)	+N/-S (ft)	+E/-W (ft)	(ft)	(ft)	(ft)			
0.0	0.0	0.0	0.0	0.0	0.0	91.39	-0.4	15.0	15.0	15.0	0.00	N/A		
100.0	100.0	100.0	100.0	0.1	0.1	91.39	-0.4	15.0	15.0	14.8	0.22	66.783		
200.0	200.0	200.0	200.0	0.3	0.3	91.39	-0.4	15.0	15.0	14.3	0.67	22.261	CC, ES	
300.0	300.0	300.0	300.0	0.6	0.6	168.52	-0.4	15.0	16.7	15.6	1.12	14.892		
400.0	399.8	399.8	399.8	0.8	0.8	171.23	-0.4	15.0	21.9	20.3	1.57	13.896	SF	
500.0	499.5	500.3	500.3	1.0	1.0	175.69	-1.1	13.4	29.1	27.1	2.01	14.499		
600.0	598.7	600.8	600.6	1.3	1.2	-178.04	-3.5	8.7	37.3	34.8	2.43	15.303		
700.0	697.5	701.2	700.7	1.7	1.4	-171.35	-7.4	0.9	46.8	43.9	2.90	16.158		
800.0	795.6	801.5	800.2	2.0	1.7	-164.91	-12.9	-10.1	58.1	54.7	3.42	17.011		
900.0	893.1	901.6	899.1	2.5	2.0	-159.05	-20.0	-24.2	71.5	67.4	4.02	17.768		
1,000.0	989.6	1,001.4	997.0	3.0	2.4	-153.88	-28.5	-41.2	86.9	82.2	4.73	18.364		
1,100.0	1,085.3	1,100.8	1,093.8	3.6	2.8	-149.38	-38.5	-61.3	104.7	99.1	5.57	18.787		
1,200.0	1,179.8	1,199.7	1,189.3	4.2	3.3	-145.48	-50.0	-84.2	124.7	118.2	6.55	19.057		
1,255.2	1,231.5	1,254.1	1,241.5	4.6	3.6	-143.55	-56.9	-98.0	136.8	129.6	7.15	19.135		
1,300.0	1,273.3	1,298.1	1,283.5	4.9	3.8	-142.13	-62.8	-109.9	146.8	139.1	7.66	19.158		
1,400.0	1,366.6	1,396.3	1,376.3	5.7	4.5	-138.75	-77.1	-138.4	169.0	160.0	8.93	18.927		
1,500.0	1,459.9	1,494.0	1,467.6	6.4	5.2	-135.15	-92.7	-169.5	191.2	180.9	10.32	18.519		
1,600.0	1,553.2	1,591.1	1,557.0	7.2	5.9	-131.43	-109.6	-203.3	213.8	202.0	11.84	18.060		
1,700.0	1,646.5	1,687.4	1,644.8	7.9	6.7	-127.81	-127.3	-238.8	237.1	223.7	13.42	17.665		
1,800.0	1,739.8	1,783.6	1,732.3	8.7	7.5	-124.80	-145.2	-274.4	261.2	246.2	15.01	17.401		
1,900.0	1,833.1	1,879.8	1,819.9	9.5	8.3	-122.30	-163.0	-310.1	285.9	269.3	16.59	17.232		
2,000.0	1,926.3	1,976.0	1,907.5	10.2	9.2	-120.19	-180.8	-345.7	311.0	292.8	18.16	17.125		
2,100.0	2,019.6	2,072.2	1,995.0	11.0	10.0	-118.40	-198.7	-381.4	336.4	316.7	19.72	17.060		
2,200.0	2,112.9	2,168.4	2,082.6	11.8	10.8	-116.86	-216.5	-417.0	362.1	340.9	21.27	17.023		

CC - Min centre to center distance or convergent point, SF - min separation factor, ES - min ellipse separation

Company:	BAYSWATER EXPLORATION & PRODUCTION	Local Co-ordinate Reference:	Well Ranchero 13-22
Project:	SEC.22-T7N-R67W	TVD Reference:	WELL @ 5020.0ft (Original Well Elev)
Reference Site:	Lake - Ranchero Pad Sec.22-T7N-R67W	MD Reference:	WELL @ 5020.0ft (Original Well Elev)
Site Error:	0.0ft	North Reference:	True
Reference Well:	Ranchero 13-22	Survey Calculation Method:	Minimum Curvature
Well Error:	0.0ft	Output errors are at	2.00 sigma
Reference Wellbore	Wellbore #1	Database:	Landmark
Reference Design:	Plan #1 (4-09-12)	Offset TVD Reference:	Offset Datum

Offset Design Lake - Ranchero Pad Sec.22-T7N-R67W - Lake 4-27 - Wellbore #1 - Plan #1 (4-09-12)													Offset Site Error:	0.0 ft
Survey Program: 0-MWD													Offset Well Error:	0.0 ft
Measured Depth (ft)	Vertical Depth (ft)	Measured Depth (ft)	Vertical Depth (ft)	Reference	Offset	Semi Major Axis	Highside Toolface (°)	Offset Wellbore Centre +N/-S (ft)	+E/-W (ft)	Between Centres (ft)	Between Ellipses (ft)	Minimum Separation (ft)	Separation Factor	Warning
2,300.0	2,206.2	2,264.6	2,170.2	12.5	11.7	-115.52	-234.3	-452.7	388.1	365.2	22.82	17.005		
2,400.0	2,299.5	2,360.8	2,257.7	13.3	12.5	-114.35	-252.2	-488.3	414.2	389.8	24.36	17.001		
2,500.0	2,392.8	2,457.0	2,345.3	14.1	13.3	-113.31	-270.0	-524.0	440.4	414.5	25.90	17.006		
2,600.0	2,486.1	2,553.2	2,432.8	14.8	14.2	-112.39	-287.8	-559.6	466.8	439.3	27.43	17.018		
2,700.0	2,579.4	2,649.4	2,520.4	15.6	15.0	-111.57	-305.7	-595.3	493.2	464.3	28.96	17.034		
2,800.0	2,672.7	2,745.7	2,608.0	16.4	15.9	-110.84	-323.5	-630.9	519.8	489.3	30.48	17.053		
2,900.0	2,766.0	2,841.9	2,695.5	17.1	16.7	-110.17	-341.3	-666.5	546.4	514.4	32.00	17.074		
3,000.0	2,859.3	2,938.1	2,783.1	17.9	17.6	-109.57	-359.2	-702.2	573.1	539.5	33.52	17.096		
3,100.0	2,952.6	3,034.3	2,870.7	18.7	18.4	-109.02	-377.0	-737.8	599.8	564.8	35.04	17.119		
3,200.0	3,045.9	3,130.5	2,958.2	19.5	19.3	-108.52	-394.8	-773.5	626.6	590.0	36.55	17.142		
3,300.0	3,139.1	3,226.7	3,045.8	20.2	20.1	-108.06	-412.7	-809.1	653.4	615.3	38.07	17.164		
3,400.0	3,232.4	3,322.9	3,133.3	21.0	21.0	-107.63	-430.5	-844.8	680.3	640.7	39.58	17.187		
3,500.0	3,325.7	3,419.1	3,220.9	21.8	21.8	-107.24	-448.3	-880.4	707.2	666.1	41.09	17.210		
3,600.0	3,419.0	3,515.3	3,308.5	22.6	22.7	-106.87	-466.2	-916.1	734.1	691.5	42.60	17.232		
3,700.0	3,512.3	3,611.5	3,396.0	23.3	23.5	-106.53	-484.0	-951.7	761.0	716.9	44.11	17.253		
3,800.0	3,605.6	3,707.7	3,483.6	24.1	24.4	-106.22	-501.8	-987.4	788.0	742.4	45.62	17.274		
3,900.0	3,698.9	3,803.9	3,571.1	24.9	25.2	-105.92	-519.7	-1,023.0	815.0	767.9	47.12	17.294		
4,000.0	3,792.2	3,900.1	3,658.7	25.6	26.1	-105.65	-537.5	-1,058.7	842.0	793.4	48.63	17.314		
4,100.0	3,885.5	3,996.3	3,746.3	26.4	26.9	-105.39	-555.3	-1,094.3	869.0	818.9	50.14	17.333		
4,200.0	3,978.8	4,092.6	3,833.8	27.2	27.8	-105.15	-573.2	-1,129.9	896.0	844.4	51.64	17.351		
4,300.0	4,072.1	4,188.8	3,921.4	28.0	28.6	-104.92	-591.0	-1,165.6	923.1	870.0	53.15	17.369		
4,400.0	4,165.4	4,285.0	4,009.0	28.7	29.5	-104.70	-608.8	-1,201.2	950.2	895.5	54.65	17.386		
4,500.0	4,258.7	4,381.2	4,096.5	29.5	30.3	-104.50	-626.7	-1,236.9	977.2	921.1	56.15	17.403		
4,600.0	4,352.0	4,477.4	4,184.1	30.3	31.2	-104.30	-644.5	-1,272.5	1,004.3	946.7	57.66	17.419		
4,700.0	4,445.2	4,573.6	4,271.6	31.1	32.0	-104.12	-662.3	-1,308.2	1,031.4	972.3	59.16	17.435		
4,800.0	4,538.5	4,669.8	4,359.2	31.8	32.9	-103.95	-680.2	-1,343.8	1,058.5	997.9	60.66	17.450		
4,900.0	4,631.8	4,766.0	4,446.8	32.6	33.7	-103.78	-698.0	-1,379.5	1,085.7	1,023.5	62.16	17.464		
5,000.0	4,725.1	4,862.2	4,534.3	33.4	34.6	-103.63	-715.8	-1,415.1	1,112.8	1,049.1	63.67	17.478		
5,100.0	4,818.4	4,958.4	4,621.9	34.1	35.4	-103.48	-733.7	-1,450.8	1,139.9	1,074.7	65.17	17.492		
5,153.7	4,868.5	5,010.0	4,668.9	34.6	35.9	-103.40	-743.2	-1,469.9	1,154.5	1,088.5	65.97	17.499		
5,200.0	4,911.8	5,054.6	4,709.5	34.9	36.3	-103.57	-751.5	-1,486.4	1,167.0	1,100.3	66.68	17.500		
5,300.0	5,006.3	5,150.9	4,797.1	35.4	37.1	-103.80	-769.3	-1,522.1	1,193.4	1,125.3	68.08	17.529		
5,400.0	5,101.8	5,264.7	4,901.3	35.9	37.9	-103.84	-789.8	-1,562.9	1,218.4	1,149.1	69.37	17.563		
5,500.0	5,198.3	5,383.9	5,012.3	36.4	38.7	-103.85	-809.2	-1,601.7	1,241.1	1,170.5	70.53	17.597		
5,600.0	5,295.7	5,504.7	5,126.5	36.8	39.3	-103.83	-826.7	-1,636.8	1,261.2	1,189.6	71.56	17.624		
5,700.0	5,393.8	5,626.8	5,243.6	37.1	39.9	-103.78	-842.3	-1,667.9	1,278.6	1,206.2	72.46	17.646		
5,800.0	5,492.5	5,750.3	5,363.4	37.4	40.4	-103.72	-855.7	-1,694.8	1,293.4	1,220.2	73.23	17.662		
5,900.0	5,591.7	5,874.9	5,485.4	37.6	40.8	-103.63	-866.9	-1,717.2	1,305.5	1,231.7	73.88	17.671		
6,000.0	5,691.3	6,000.5	5,609.4	37.8	41.2	-103.52	-875.8	-1,734.9	1,314.9	1,240.5	74.40	17.673		
6,100.0	5,791.1	6,126.8	5,734.9	37.9	41.4	-103.38	-882.3	-1,747.8	1,321.4	1,246.6	74.78	17.671		
6,208.9	5,900.0	6,265.0	5,872.7	38.0	41.7	-179.01	-886.5	-1,756.3	1,325.3	1,250.3	75.06	17.658		
6,300.0	5,991.1	6,381.0	5,988.7	38.1	41.8	-178.90	-887.8	-1,758.8	1,326.4	1,251.2	75.21	17.635		
6,400.0	6,091.1	6,483.4	6,091.1	38.2	41.8	-178.90	-887.8	-1,758.8	1,326.4	1,251.0	75.36	17.600		
6,500.0	6,191.1	6,583.4	6,191.1	38.3	41.9	-178.90	-887.8	-1,758.8	1,326.4	1,250.9	75.51	17.565		
6,600.0	6,291.1	6,683.4	6,291.1	38.3	42.0	-178.90	-887.8	-1,758.8	1,326.4	1,250.7	75.67	17.529		
6,700.0	6,391.1	6,783.4	6,391.1	38.4	42.0	-178.90	-887.8	-1,758.8	1,326.4	1,250.5	75.82	17.493		
6,800.0	6,491.1	6,883.4	6,491.1	38.5	42.1	-178.90	-887.8	-1,758.8	1,326.4	1,250.4	75.98	17.457		
6,900.0	6,591.1	6,983.4	6,591.1	38.6	42.2	-178.90	-887.8	-1,758.8	1,326.4	1,250.2	76.14	17.420		
7,000.0	6,691.1	7,083.4	6,691.1	38.7	42.2	-178.90	-887.8	-1,758.8	1,326.4	1,250.1	76.30	17.383		
7,100.0	6,791.1	7,183.4	6,791.1	38.7	42.3	-178.90	-887.8	-1,758.8	1,326.4	1,249.9	76.47	17.346		
7,200.0	6,891.1	7,283.4	6,891.1	38.8	42.4	-178.90	-887.8	-1,758.8	1,326.4	1,249.7	76.63	17.308		

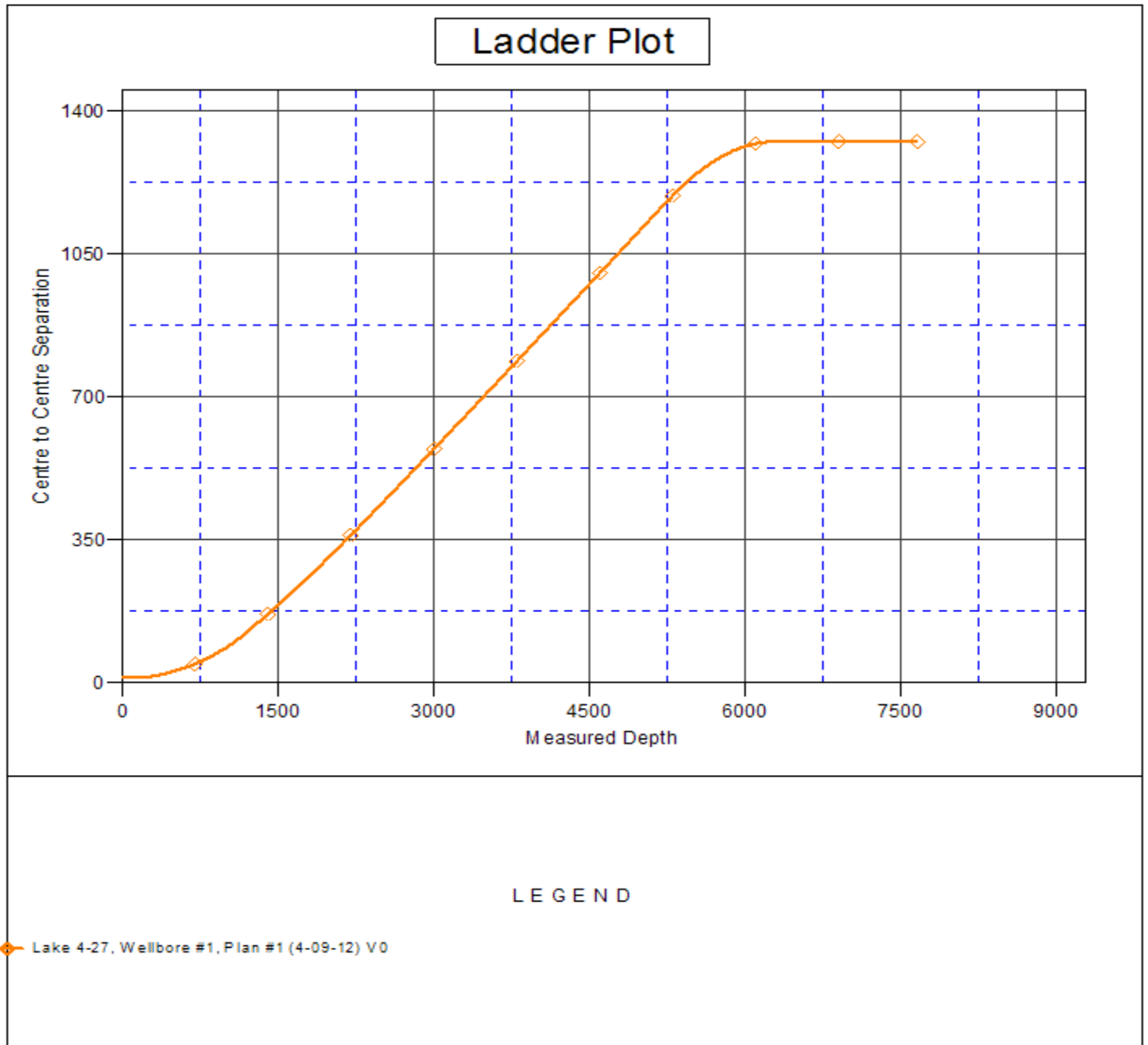
CC - Min centre to center distance or convergent point, SF - min separation factor, ES - min ellipse separation

Company:	BAYSWATER EXPLORATION & PRODUCTION	Local Co-ordinate Reference:	Well Ranchero 13-22
Project:	SEC.22-T7N-R67W	TVD Reference:	WELL @ 5020.0ft (Original Well Elev)
Reference Site:	Lake - Ranchero Pad Sec.22-T7N-R67W	MD Reference:	WELL @ 5020.0ft (Original Well Elev)
Site Error:	0.0ft	North Reference:	True
Reference Well:	Ranchero 13-22	Survey Calculation Method:	Minimum Curvature
Well Error:	0.0ft	Output errors are at	2.00 sigma
Reference Wellbore	Wellbore #1	Database:	Landmark
Reference Design:	Plan #1 (4-09-12)	Offset TVD Reference:	Offset Datum

Offset Design										Lake - Ranchero Pad Sec.22-T7N-R67W - Lake 4-27 - Wellbore #1 - Plan #1 (4-09-12)				Offset Site Error:		0.0 ft
Survey Program: 0-MWD												Offset Well Error:		0.0 ft		
Reference		Offset		Semi Major Axis			Distance							Warning		
Measured Depth (ft)	Vertical Depth (ft)	Measured Depth (ft)	Vertical Depth (ft)	Reference (ft)	Offset (ft)	Highside Toolface (°)	Offset Wellbore Centre +N/-S (ft)	+E/-W (ft)	Between Centres (ft)	Between Ellipses (ft)	Minimum Separation (ft)	Separation Factor				
7,300.0	6,991.1	7,383.4	6,991.1	38.9	42.4	-178.90	-887.8	-1,758.8	1,326.4	1,249.6	76.80	17.270				
7,400.0	7,091.1	7,483.4	7,091.1	39.0	42.5	-178.90	-887.8	-1,758.8	1,326.4	1,249.4	76.97	17.231				
7,500.0	7,191.1	7,583.4	7,191.1	39.1	42.6	-178.90	-887.8	-1,758.8	1,326.4	1,249.2	77.15	17.192				
7,600.0	7,291.1	7,683.4	7,291.1	39.2	42.7	-178.90	-887.8	-1,758.8	1,326.4	1,249.0	77.32	17.153				
7,658.9	7,350.0	7,742.3	7,350.0	39.2	42.7	-178.90	-887.8	-1,758.8	1,326.4	1,248.9	77.43	17.130				

Company:	BAYSWATER EXPLORATION & PRODUCTION	Local Co-ordinate Reference:	Well Ranchero 13-22
Project:	SEC.22-T7N-R67W	TVD Reference:	WELL @ 5020.0ft (Original Well Elev)
Reference Site:	Lake - Ranchero Pad Sec.22-T7N-R67W	MD Reference:	WELL @ 5020.0ft (Original Well Elev)
Site Error:	0.0ft	North Reference:	True
Reference Well:	Ranchero 13-22	Survey Calculation Method:	Minimum Curvature
Well Error:	0.0ft	Output errors are at	2.00 sigma
Reference Wellbore	Wellbore #1	Database:	Landmark
Reference Design:	Plan #1 (4-09-12)	Offset TVD Reference:	Offset Datum

Reference Depths are relative to WELL @ 5020.0ft (Original Well Elev) Coordinates are relative to: Ranchero 13-22
 Offset Depths are relative to Offset Datum Coordinate System is US State Plane 1983, Colorado Northern Zone
 Central Meridian is -105.500000 ° Grid Convergence at Surface is: 0.40°



Company:	BAYSWATER EXPLORATION & PRODUCTION	Local Co-ordinate Reference:	Well Ranchero 13-22
Project:	SEC.22-T7N-R67W	TVD Reference:	WELL @ 5020.0ft (Original Well Elev)
Reference Site:	Lake - Ranchero Pad Sec.22-T7N-R67W	MD Reference:	WELL @ 5020.0ft (Original Well Elev)
Site Error:	0.0ft	North Reference:	True
Reference Well:	Ranchero 13-22	Survey Calculation Method:	Minimum Curvature
Well Error:	0.0ft	Output errors are at	2.00 sigma
Reference Wellbore	Wellbore #1	Database:	Landmark
Reference Design:	Plan #1 (4-09-12)	Offset TVD Reference:	Offset Datum

Reference Depths are relative to WELL @ 5020.0ft (Original Well Elev) Coordinates are relative to: Ranchero 13-22
Offset Depths are relative to Offset Datum Coordinate System is US State Plane 1983, Colorado Northern Zone
Central Meridian is -105.500000 ° Grid Convergence at Surface is: 0.40°

