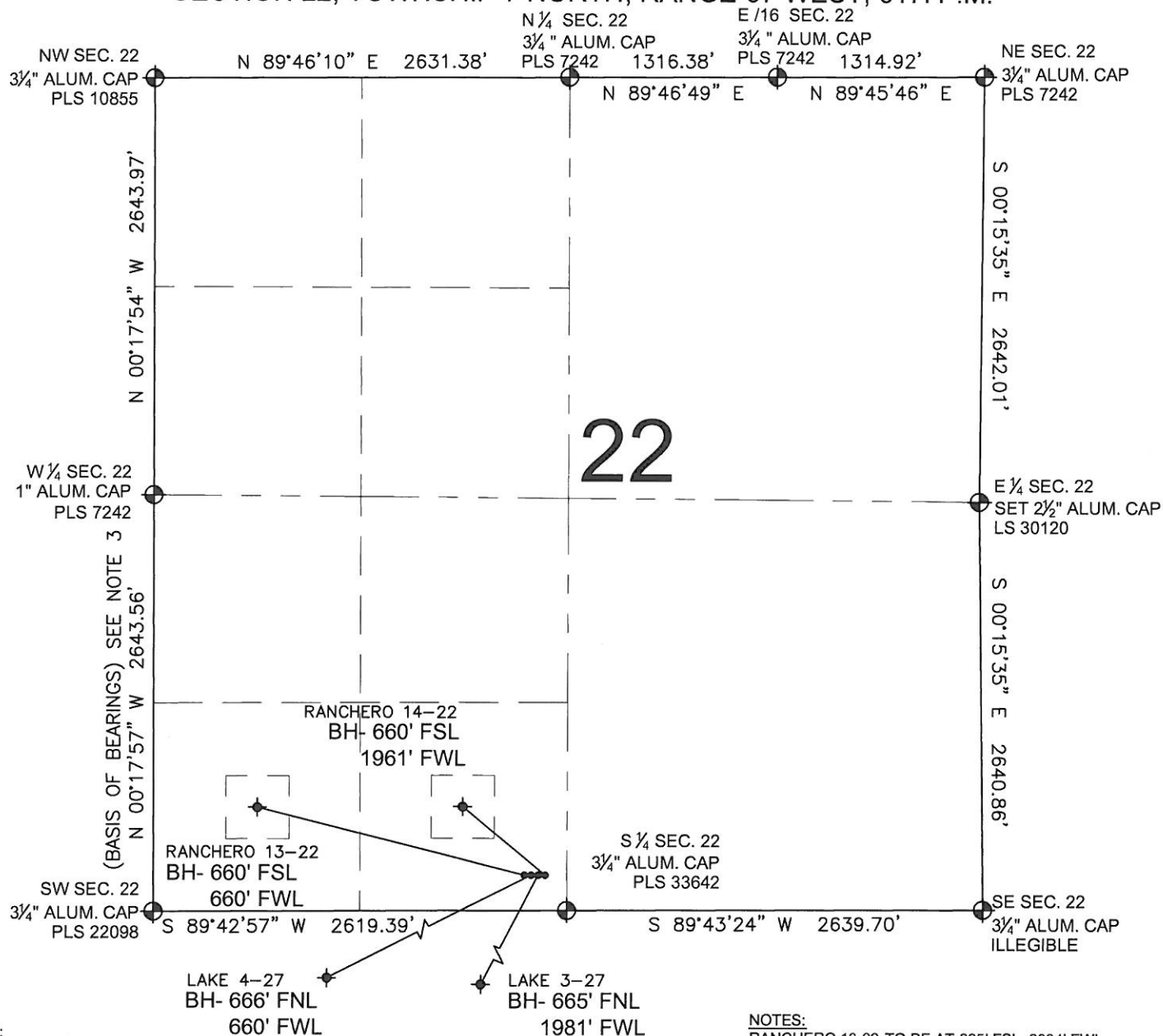


PAD DRAWING: RANCHERO & LAKE 4 PAD

SECTION 22, TOWNSHIP 7 NORTH, RANGE 67 WEST, 6TH P.M.



NOTES:

1. THIS FIELD SURVEY CONFORMS TO THE MINIMUM STANDARDS SET BY THE C.O.G.C.C., RULE NO. 215
2. HORIZONTAL POSITIONS AND ORTHOMETRIC ELEVATIONS SHOWN AT THE WELL HEAD, ARE BASED ON GPS-RTK POSITIONS DERIVED FROM MINIMUM 2-HOUR STATIC OBSERVATIONS CORRECTED BY THE NATIONAL GEODETIC SURVEY ONLINE POSITIONING USER SERVICE, O.P.U.S. DATUM: HORIZONTAL = NAD83/2007, VERTICAL = NAVD88
3. THE BASIS OF BEARINGS ARE STATE PLANE COORDINATE SYSTEM GRID BEARINGS SHOWN HEREON BETWEEN THE DESCRIBED THE MONUMENTS SHOWN HEREON.
4. GRID DISTANCES ARE SHOWN, AS MEASURED IN THE FIELD, WITH TIES TO WELLS MEASURED PERPENDICULAR TO SECTION LINES.

NOTES:

RANCHERO 13-22 TO BE AT 225' FSL, 2394' FWL.
 BOTTOM HOLE AT 660' FSL & 660' FWL.
 RANCHERO 14-22 TO BE AT 225' FSL, 2439' FWL.
 BOTTOM HOLE AT 660' FSL & 1961' FWL.
 LAKE 4-27 TO BE AT 225' FSL, 2409' FWL.
 BOTTOM HOLE AT 666' FNL & 660' FWL.
 LAKE 3-27 TO BE AT 225' FSL, 2424' FWL.
 BOTTOM HOLE AT 665' FNL & 1981' FWL.

LEGEND

- = EXISTING MONUMENT
 = BOTTOM HOLE
 BH= BOTTOM HOLE
 = PROPOSED WELL
 = EXISTING WELL

PREPARED BY:



KERR-MCGEE OIL & GAS ONSHORE LP

FIELD DATE:
03-08-12

PAD NAME:
RANCHERO & LAKE 4 PAD

DRAWING DATE:
03-16-12

SURFACE LOCATION:
WELD COUNTY, COLORADO

BY:
KAG

SE 1/4 SW 1/4, SEC. 22, T7N, R67W, 6TH P.M.

