

6S/91W

- 0344147B  
Permit Issued;  
Completion  
Status Unknown  
Depth 0'
- 0344147A  
Well  
Constructed  
Depth 100'
- 9500391  
Well  
Constructed  
Depth 153'
- 0019794  
Permit Issued;  
Completion  
Status Unknown  
Depth 0'

Intermittent Stream

East

2974' - NW 166.22°

3072' - NW 166.64°

120' - NW 129.08°

2112' - SW 193.26°

Intermittent Stream

7S/91W

- MDP 6 Pad**
- GGU MILLER FED 33C-32-691
  - GGU MILLER FED 33B-32-691
  - GGU MILLER FED 33A-32-691
  - GGU MILLER FED 34D-32-691
  - GGU MILLER FED 34C-32-691
  - GGU MILLER FED 34B-32-691
  - GGU MILLER FED 34A-32-691
  - GGU MILLER FED 24A-32-691
  - GGU MILLER FED 24B-32-691
  - GGU MILLER FED 24C-32-691
  - GGU MILLER FED 24D-32-691
  - GGU MILLER FED 23B-32-691
  - GGU MILLER FED 23C-32-691

# Hydrology Map

MDP 6 Pad  
SESW, Section 32, T6S R91W  
Garfield County, Colorado



0 250 500 1,000  
Feet

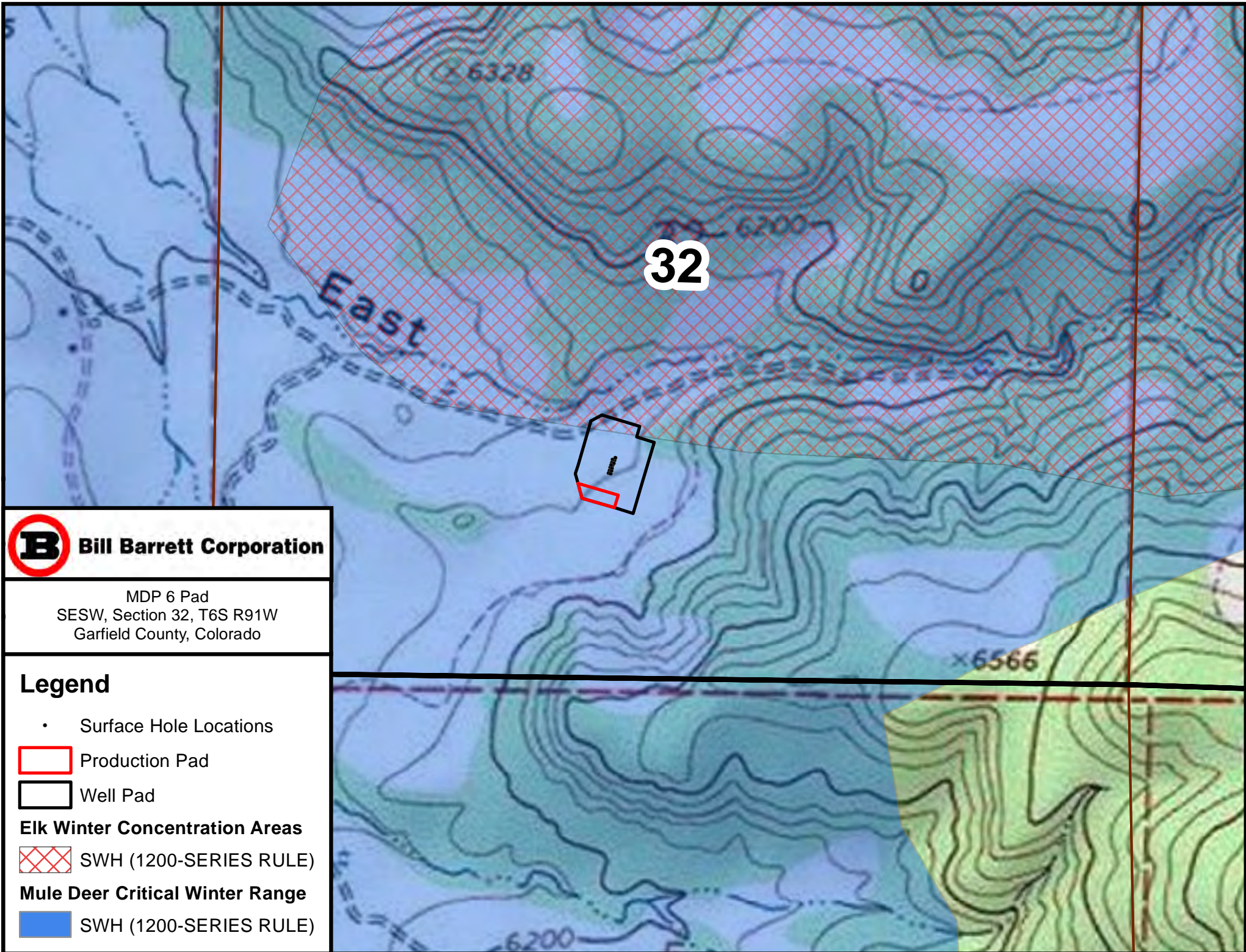
## Wells

- Water Wells
- O&G SH Location
- 1,000' Buffer



- Stream / River
- Canal / Ditch





**Bill Barrett Corporation**

MDP 6 Pad  
SESW, Section 32, T6S R91W  
Garfield County, Colorado

## Legend

- Surface Hole Locations



Production Pad



Well Pad

### Elk Winter Concentration Areas



SWH (1200-SERIES RULE)

### Mule Deer Critical Winter Range



SWH (1200-SERIES RULE)