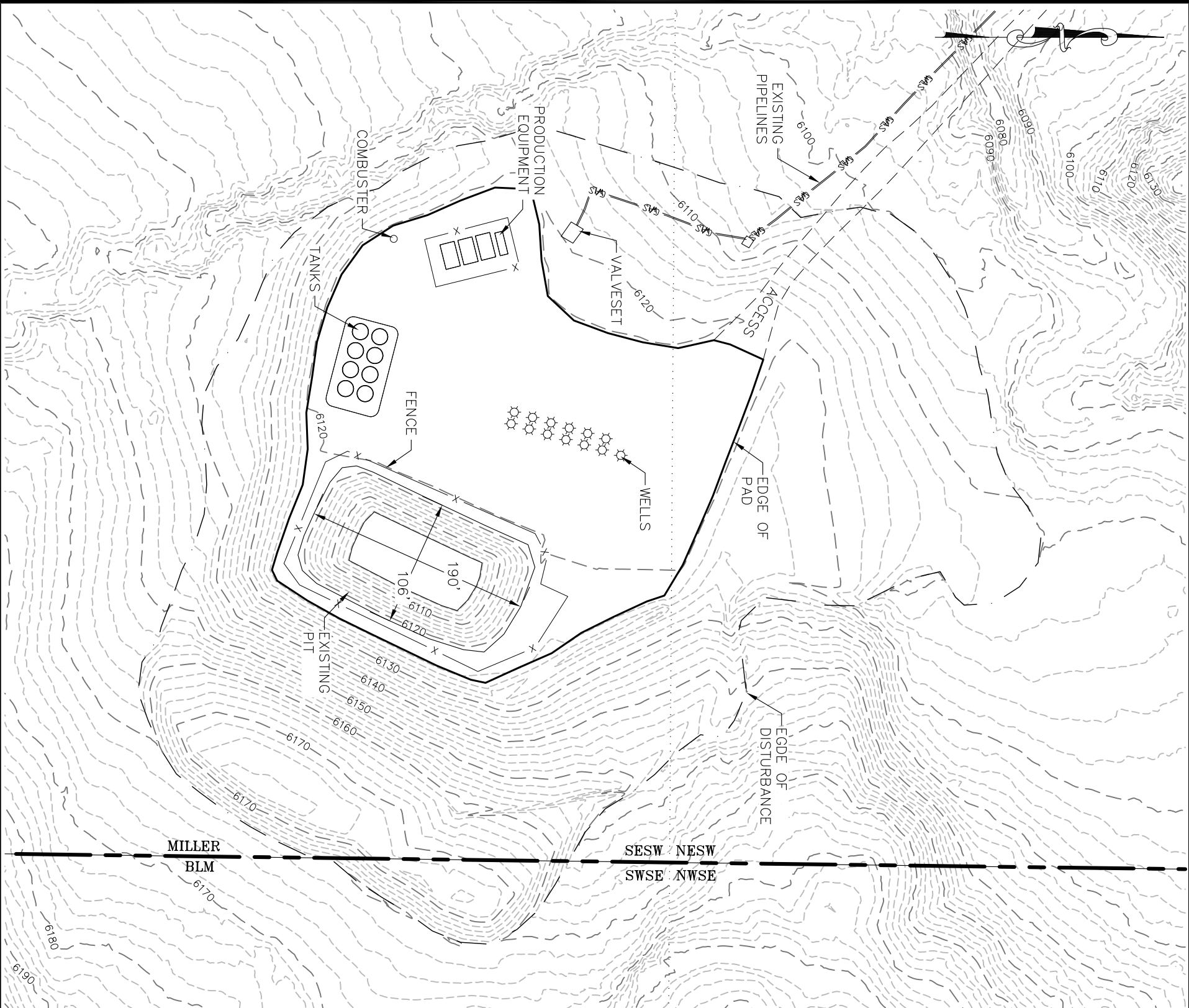


MDP 6 PAD - PIT EXHIBIT
SE1/4SW1/4 SEC. 32, T. 6 S., R. 91 W., 6TH P.M.
GARFIELD COUNTY, COLORADO



PIT VOLUME CALC'S (ASBUILT):

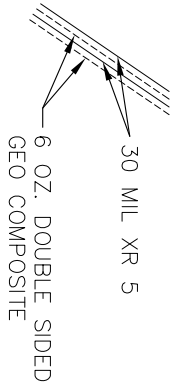
SURFACE AREA OF TOP =	19,110 SQ FT	TOP ELEV. =	6121.81
SURFACE AREA OF BOTTOM =	4,906 SQ FT	BOTTOM ELEV. =	6103.72
SURFACE AREA AT FREEBOARD =	17,415 SQ FT =	FREEBOARD ELEV. =	6119.81
(2 VERTICAL FEET OF FREEBOARD)			

TOTAL VOLUME = 38,711 BBL (8,050 CY)

WORKING VOLUME = 32,003 BBL

TOTAL DISTURBED AREA:


AREA INSIDE LIMITS OF DISTURBANCE LINE = 324,227 sq.ft. 7.44 acres



PIT LINER DETAIL

NOTES:

- 1) CONTOUR INTERVAL IS 2 FOOT
- 2) SURVEY DATE: 3/8/12
- 3) INSTRUMENT OPERATOR: TAB
- 4) PDOP MASK SET TO 6, ELEV MASK SET TO 15°
- 4) LATs AND LONGs ARE IN DECIMAL DEGREE FORMAT
- 5) DATUM IS COLORADO STATE PLANE, CENTRAL ZONE, NAD 83
- 6) PIT WAS FILLED WITH FLUID AT TIME OF SURVEY, THEREFORE, PIT DEPTH IS ESTIMATED.



ECCLIPSE

surveying

111 E. THIRD ST., SUITE 208, RIFLE, CO 81650

(970) 625-3048

REV. DATE:


SCALE: 1" = 100'

DATE: 3/8/12

SHEET: 1 OF 1

PROJECT: MDP 6

DFT: TAB

 Bill Barrett Corporation

MDP 6 PAD - PIT EXHIBIT
SEC 32, T.6S., R.91W., 6TH P.M.