

GREAT WESTERN OIL & GAS COMPANY

GREAT WESTERN #25-12-15, #25-24-24, #25-53, #25-24,
#25-24-23, #25-22-18, #25-23, #25-22-13 & #25-22-14
LOCATED IN WELD COUNTY, COLORADO
SECTION 25, T6N, R67W, 6th P.M.

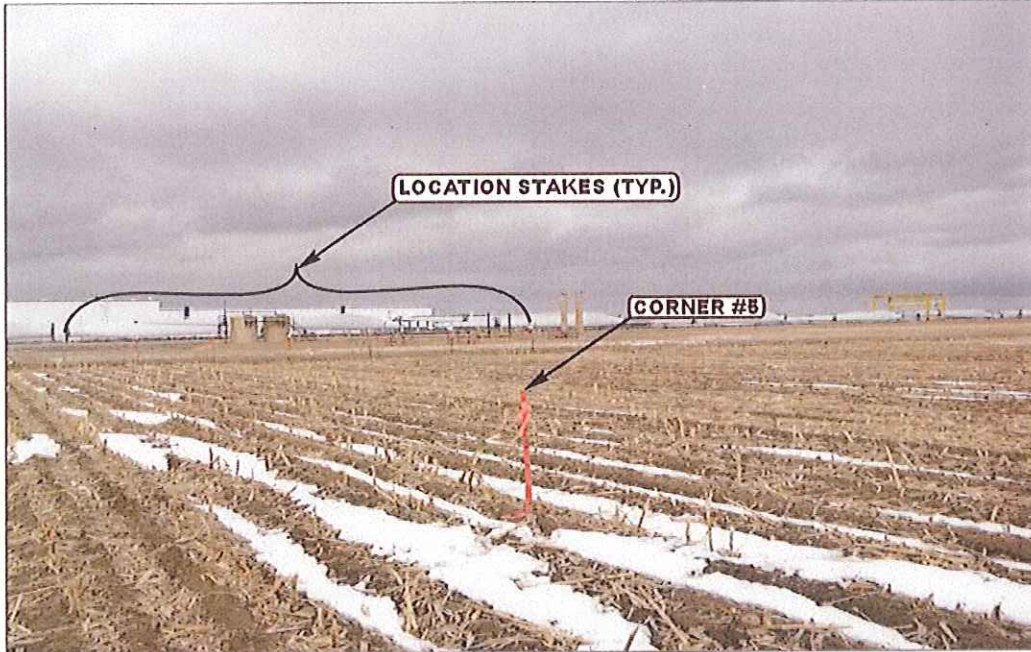


PHOTO: VIEW FROM CORNER #5 TO LOCATION STAKES

CAMERA ANGLE: NORTHEASTERLY



PHOTO: VIEW OF EXISTING ACCESS

CAMERA ANGLE: EASTERLY



Uintah Engineering & Land Surveying
85 South 200 East Vernal, Utah 84078
(435) 789-1017 * FAX (435) 789-1813

LOCATION PHOTOS

02 13 12
MONTH DAY YEAR

PHOTO
P1

TAKEN BY: D.N. DRAWN BY: A.T. REVISED: 00-00-00

GREAT WESTERN OIL & GAS COMPANY

GREAT WESTERN #25-12-15, #25-24-24, #25-53, #25-24,
#25-24-23, #25-22-18, #25-23, #25-22-13 & #25-22-14
LOCATED IN WELD COUNTY, COLORADO
SECTION 25, T6N, R67W, 6th P.M.



PHOTO: VIEW OF LOCATION STAKES

CAMERA ANGLE: NORTHERLY



PHOTO: VIEW OF LOCATION STAKES

CAMERA ANGLE: EASTERLY



Uintah Engineering & Land Surveying
85 South 200 East Vernal, Utah 84078
(435) 789-1017 * FAX (435) 789-1813

LOCATION PHOTOS

02 13 11
MONTH DAY YEAR

PHOTO

P2

TAKEN BY: D.N.

DRAWN BY: A.T.

REVISED: 00-00-00

GREAT WESTERN OIL & GAS COMPANY

GREAT WESTERN #25-12-15, #25-24-24, #25-53, #25-24,

#25-24-23, #25-22-18, #25-23, #25-22-13 & #25-22-14

LOCATED IN WELD COUNTY, COLORADO

SECTION 25, T6N, R67W, 6th P.M.

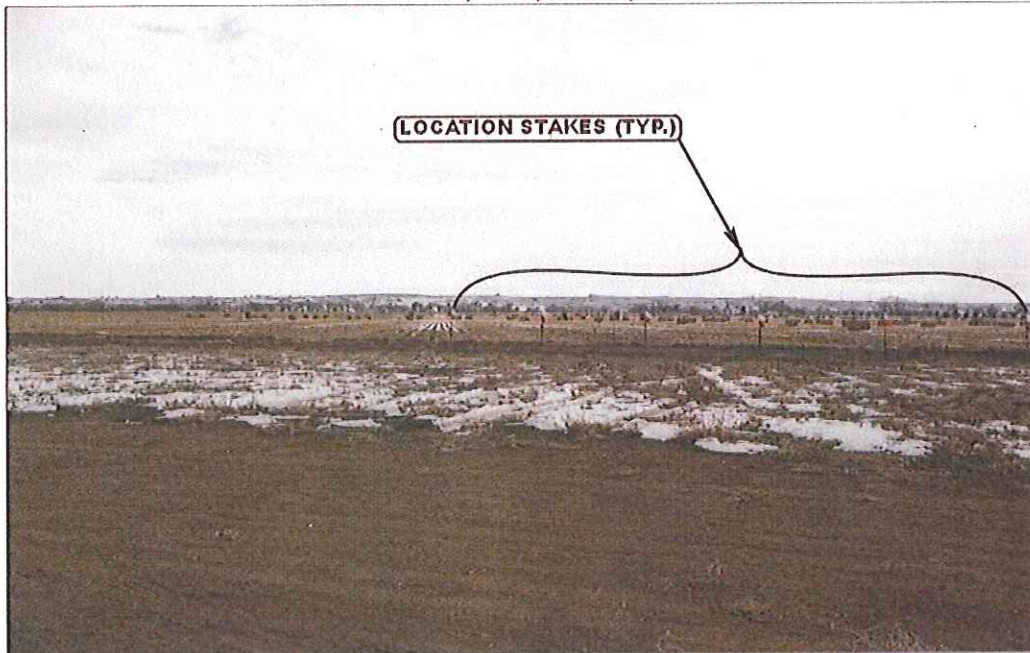


PHOTO: VIEW OF LOCATION STAKES

CAMERA ANGLE: SOUTHERLY

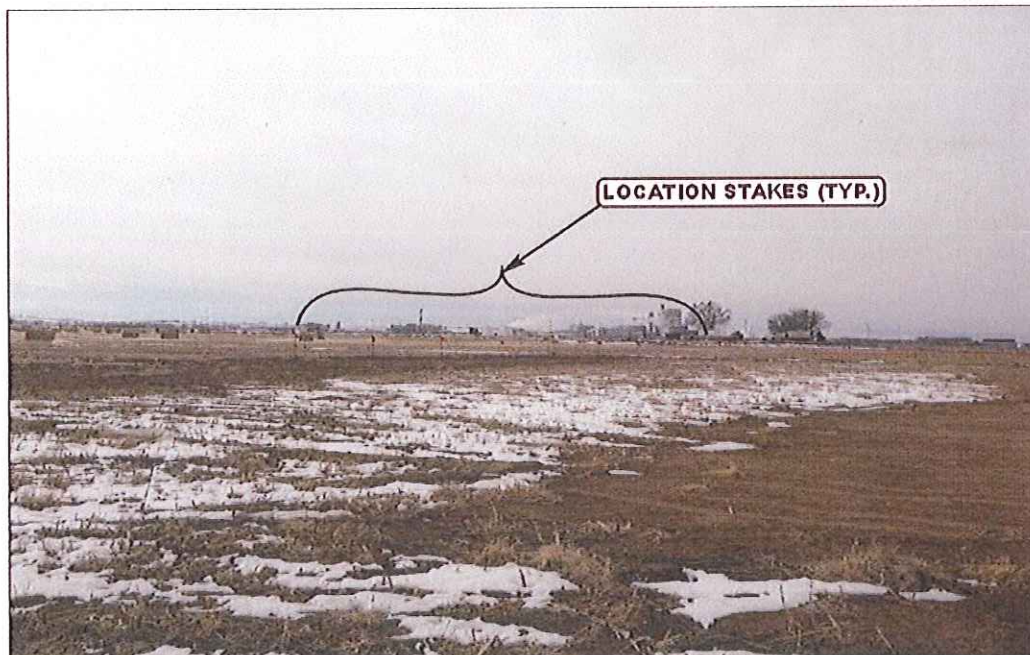


PHOTO: VIEW OF LOCATION STAKES

CAMERA ANGLE: WESTERLY



UEIS

Uintah Engineering & Land Surveying

85 South 200 East Vernal, Utah 84078

(435) 789-1017 * FAX (435) 789-1813

LOCATION PHOTOS

02 13 12
MONTH DAY YEAR

PHOTO

P3

TAKEN BY: D.N.

DRAWN BY: A.T.

REVISED: 00-00-00