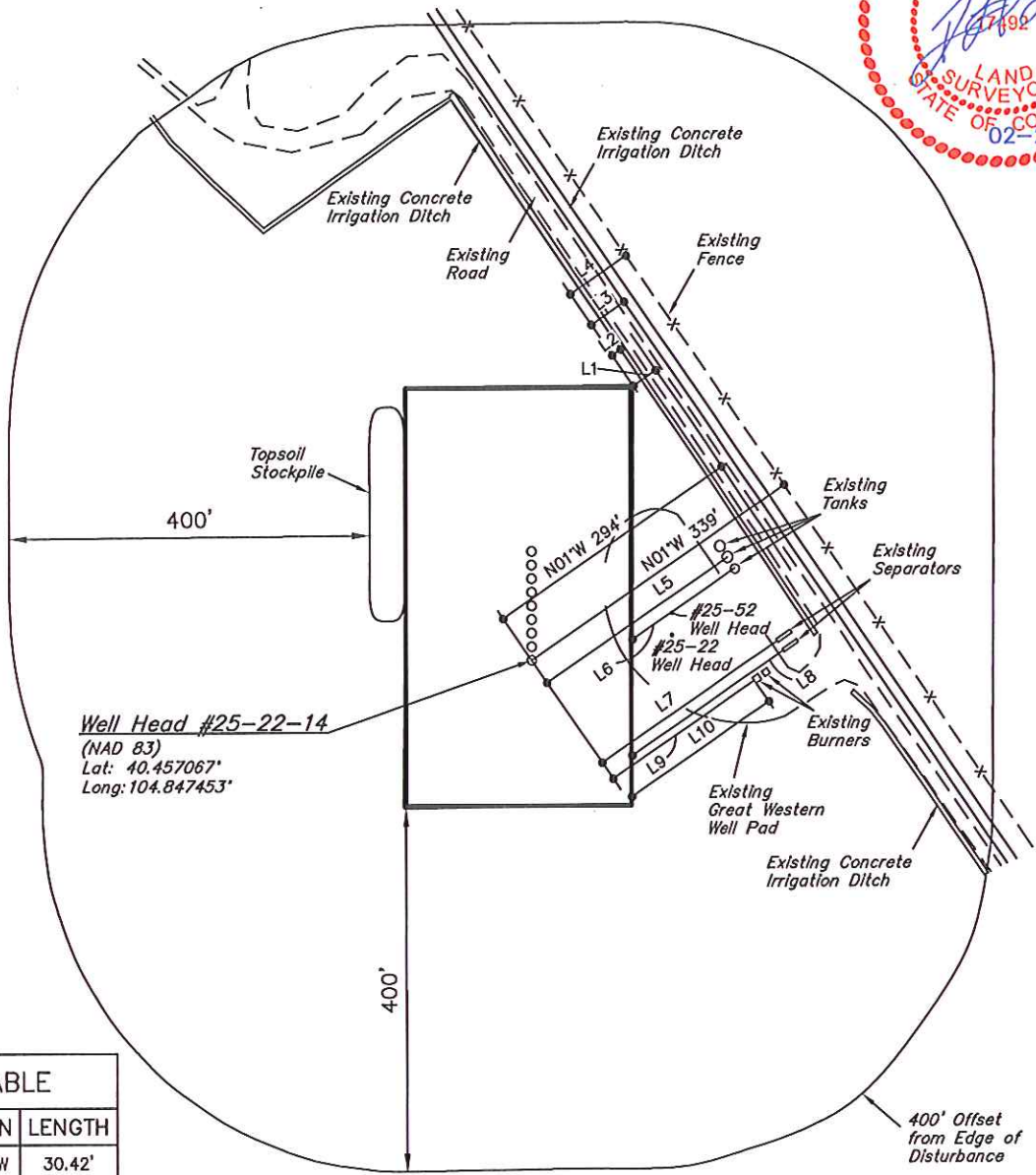


GREAT WESTERN OIL & GAS COMPANY

ADDENDUM TO LEGAL PLAT FOR

GREAT WESTERN #25-12-15, #25-24-24, #25-53,
 #25-24, #25-24-23, #25-22-18, #25-23,
 #25-22-13 & #25-22-14
 SECTION 25, T6N, R67W, 6th P.M.
 NW 1/4 SW 1/4

SCALE: 1" = 200'
 DATE: 02-16-12
 DRAWN BY: T.B.



Well Head #25-22-14
 (NAD 83)
 Lat: 40.457067°
 Long: 104.847453°

LINE TABLE		
LINE	DIRECTION	LENGTH
L1	N00°30'43"W	30.42'
L2	N00°30'43"W	11.33'
L3	N00°30'43"W	44.07'
L4	N00°30'43"W	74.51'
L5	N00°30'43"W	242.53'
L6	N00°30'43"W	137.67'
L7	N00°30'43"W	234.81'
L8	N00°30'43"W	202.95'
L9	N00°30'43"W	189.35'
L10	N00°30'43"W	183.56'