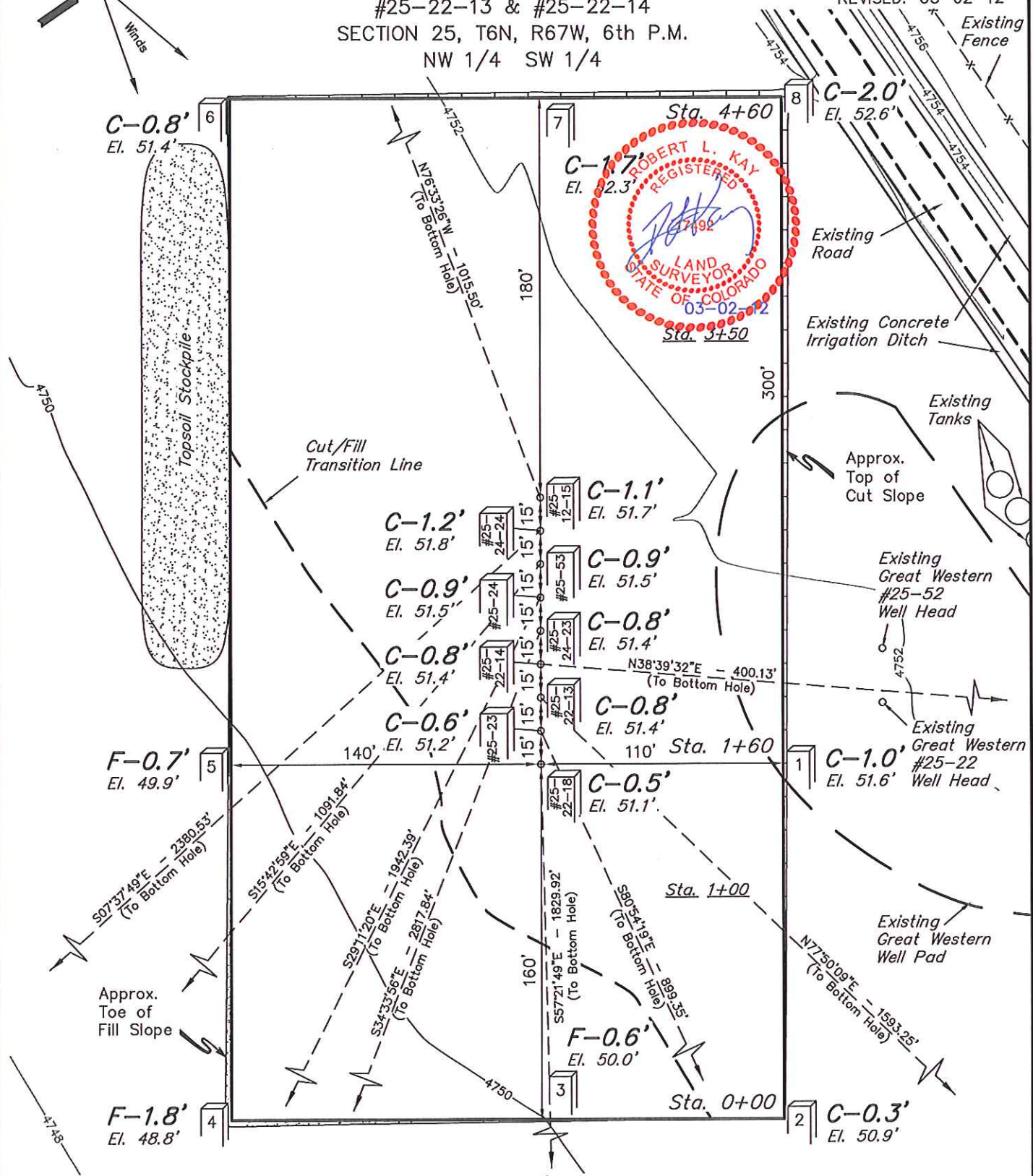
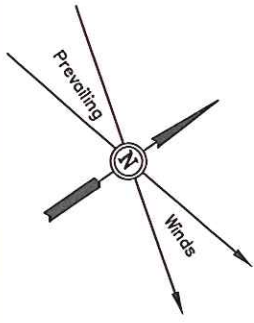


GREAT WESTERN OIL & GAS COMPANY
CONSTRUCTION LAYOUT FOR

GREAT WESTERN #25-12-15, #25-24-24, #25-53,
#25-24, #25-24-23, #25-22-18, #25-23,
#25-22-13 & #25-22-14
SECTION 25, T6N, R67W, 6th P.M.
NW 1/4 SW 1/4

FIGURE #1

SCALE: 1" = 60'
DATE: 02-16-12
DRAWN BY: T.B.
REVISED: 03-02-12

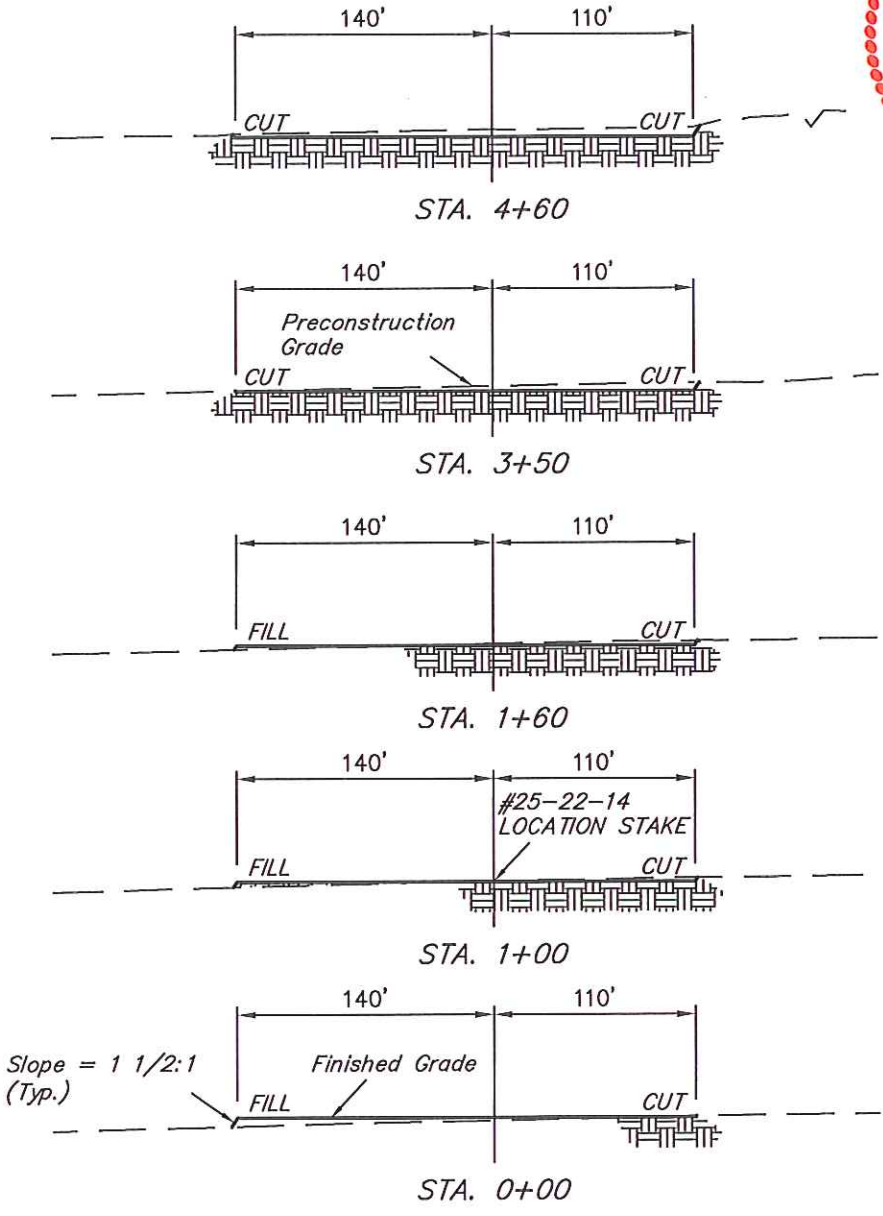


Elev. Ungraded Ground At #25-22-14 Loc. Stake = 4751.1'
FINISHED GRADE ELEV. AT #25-22-14 LOC. STAKE = 4750.6' UINTEH ENGINEERING & LAND SURVEYING
85 So. 200 East * Vernal, Utah 84078 * (435) 789-1017

GREAT WESTERN OIL & GAS COMPANY
CONSTRUCTION LAYOUT CROSS SECTIONS FOR
GREAT WESTERN #25-12-15, #25-24-24, #25-53,
#25-24, #25-24-23, #25-22-18, #25-23,
#25-22-13 & #25-22-14
SECTION 25, T6N, R67W, 6th P.M.
NW 1/4 SW 1/4

X-Section Scale
 1" = 40'
 1" = 100'

DATE: 02-16-12
 DRAWN BY: T.B.



NOTE:
 Topsoil should not be Stripped Below Finished Grade on Substructure Area.

APPROXIMATE ACREAGES
 WELL SITE DISTURBANCE = ± 2.898 ACRES

*** NOTE:**
 FILL QUANTITY INCLUDES 5% FOR COMPACTION

APPROXIMATE YARDAGES

(6") Topsoil Stripping	=	2,180 Cu. Yds.
Remaining Location	=	1,460 Cu. Yds.
TOTAL CUT	=	3,640 CU.YDS.
FILL	=	1,460 CU.YDS.

EXCESS MATERIAL	=	2,180 Cu. Yds.
Topsoil	=	2,180 Cu. Yds.
EXCESS UNBALANCE	=	0 Cu. Yds.
(After Interim Rehabilitation)		

UINTAH ENGINEERING & LAND SURVEYING
 85 So. 200 East * Vernal, Utah 84078 * (435) 789-1017

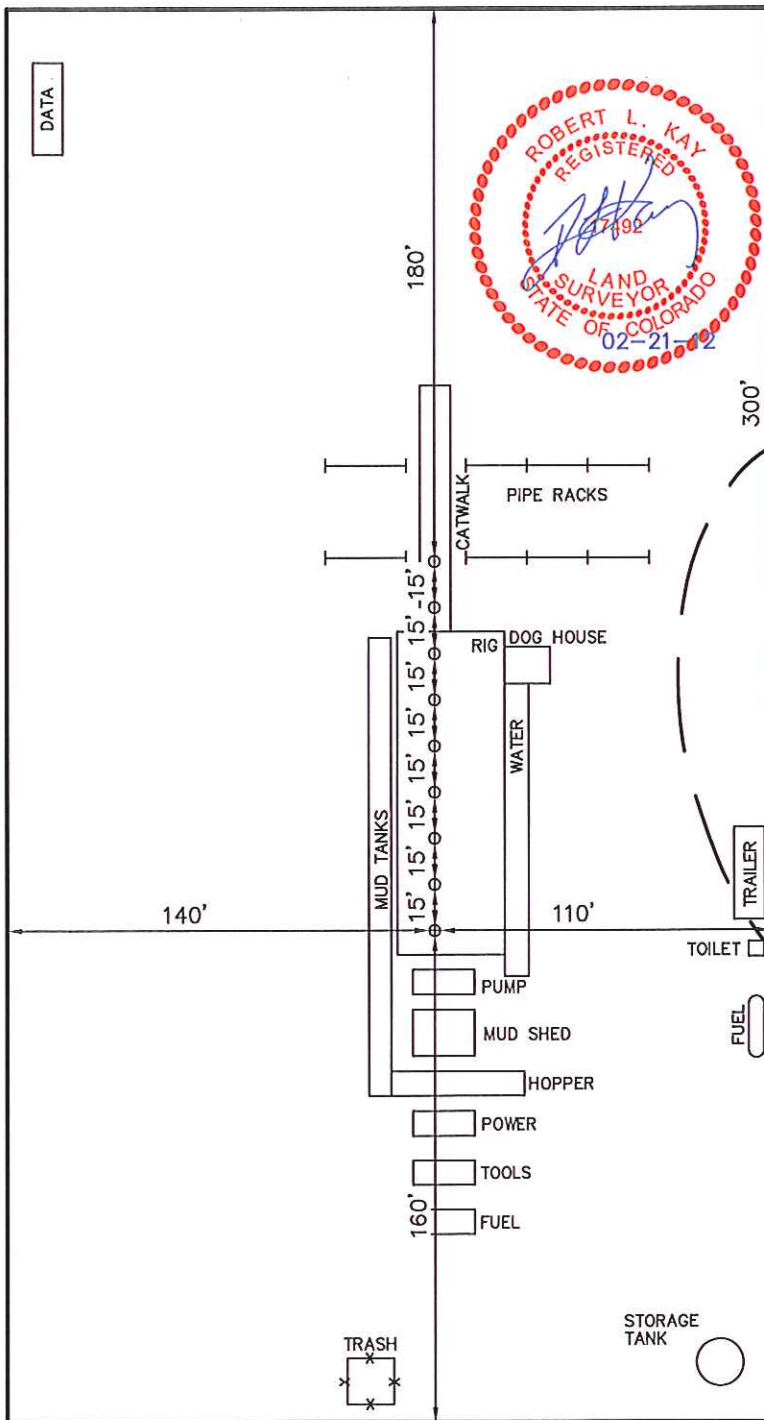
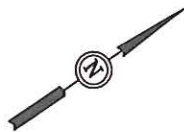
GREAT WESTERN OIL & GAS COMPANY

TYPICAL RIG LAYOUT FOR

GREAT WESTERN #25-12-15, #25-24-24, #25-53,
#25-24, #25-24-23, #25-22-18, #25-23,
#25-22-13 & #25-22-14
SECTION 25, T6N, R67W, 6th P.M.
NW 1/4 SW 1/4

FIGURE #3

SCALE: 1" = 60'
DATE: 02-16-12
DRAWN BY: T.B.



Existing Road

Existing Well Pad for Great Western #25-52 & #25-22