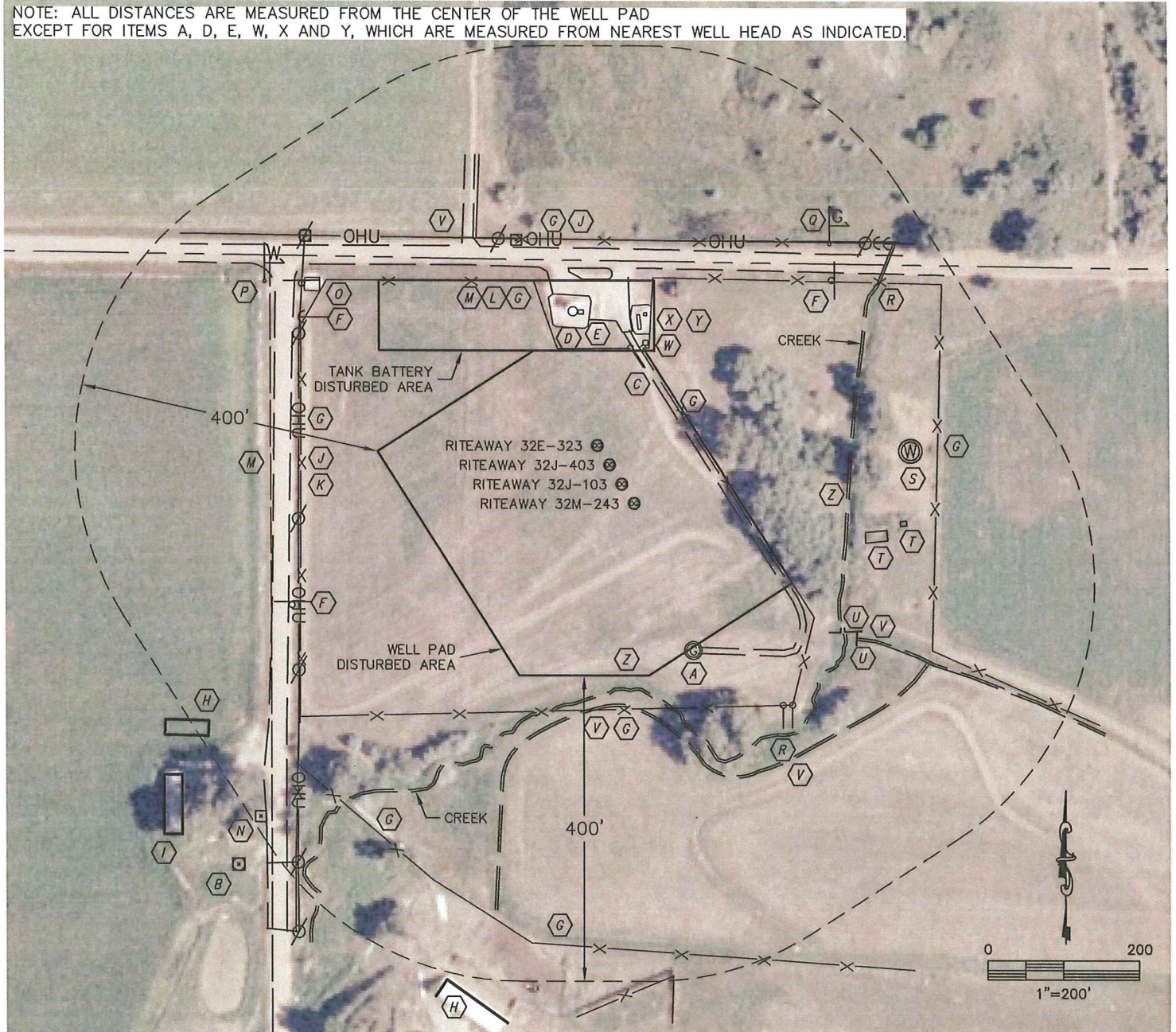


LOCATION DRAWING

RITEAWAY MULTI-WELL PAD

SECTION: 32
TOWNSHIP: 5N
RANGE: 67W

NOTE: ALL DISTANCES ARE MEASURED FROM THE CENTER OF THE WELL PAD EXCEPT FOR ITEMS A, D, E, W, X AND Y, WHICH ARE MEASURED FROM NEAREST WELL HEAD AS INDICATED.



- | | |
|---|---|
| (A) EXISTING WELL-MILLER 32-1 207' SE (FROM RITEAWAY 32M-243) | (N) TELEPHONE PEDESTAL 650' SW |
| (B) WATER METER 715' SW | (O) VALVE SET 471' NW |
| (C) SW EDGE WELL ROAD 108' NE | (P) WATER MARKER 528' NW |
| (D) OIL TANK 173' N (FROM RITEAWAY 32E-323) | (Q) GAS MARKER 415' NE |
| (E) PRODUCED WATER TANK 173' N (FROM RITEAWAY 32E-323) | (R) CMP CULVERT 429'NE, 402'SE |
| (F) ROAD SIGN 461'SW, 487'NW, 386'NE | (S) OLD BRICK WELL 391' E |
| (G) FENCE 307'S, 120'NE, 417'E, 254'N, 307'N,
417'W, 562'SW, 619'S | (T) OLD CONCRETE FOUNDATION 339'SE, 381'SE |
| (H) METAL SHED 629'SW, 699'SW | (U) CONCRETE IRRIGATION STRUCTURE 349'SE, 380' SE |
| (I) HOUSE 697' SW | (V) DIRT IRRIGATION DITCH 384'SE, 435'SE, 300'S, 368'NW |
| (J) OVER-HEAD UTILITY 420'W, 307'N | (W) BURNER 145' NE (FROM RITEAWAY 32E-323) |
| (K) EAST EDGE WCR 15 1/4 431' W | (X) SEPARATOR 162' NE (FROM RITEAWAY 32E-323) |
| (L) SOUTH EDGE WCR 52 270' N | (Y) METER HOUSE 181' NE (FROM RITEAWAY 32E-323) |
| (M) PROPERTY LINE 280'N, 457'W | (Z) CREEK (NEAR EDGE) 279'S, 307'E |