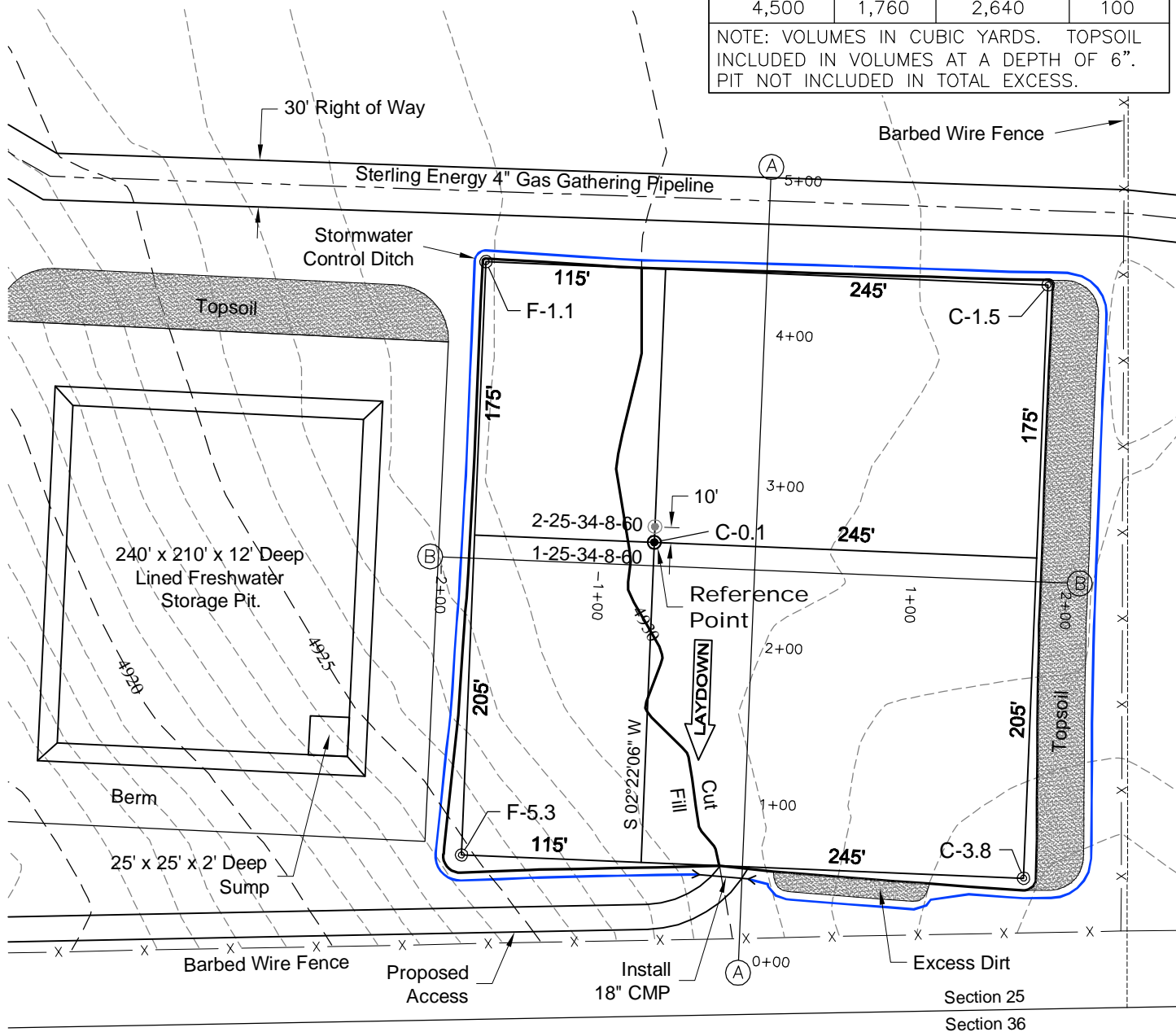


1 of 2

SURFACE USE:
NON CROP LAND

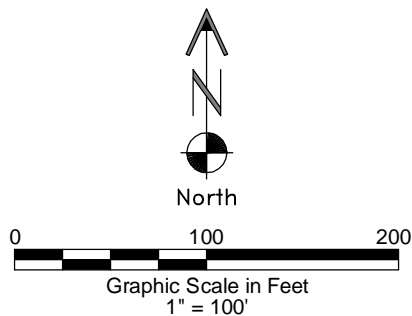
PAD 360'X380' ELEV= 4930'			
DISTURBED AREA= 4.0± ACRES			
ESTIMATED DIRT QUANTITIES			
CUTx10%	FILL	TOPSOIL	EXCESS
4,500	1,760	2,640	100
NOTE: VOLUMES IN CUBIC YARDS. TOPSOIL INCLUDED IN VOLUMES AT A DEPTH OF 6". PIT NOT INCLUDED IN TOTAL EXCESS.			



NOTE:
10% ALLOWANCE IS MADE FOR SOIL EXPANSION.

CARRIZO OIL & GAS, INC
HEMBERGER 25-34-8-60 PAD

SW1/4 SE1/4 SECTION 25 T8N R60W
6th PM WELD COUNTY COLORADO



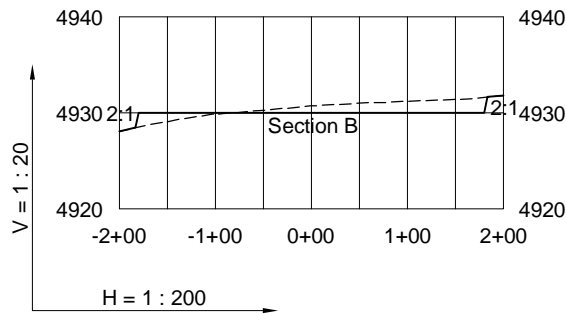
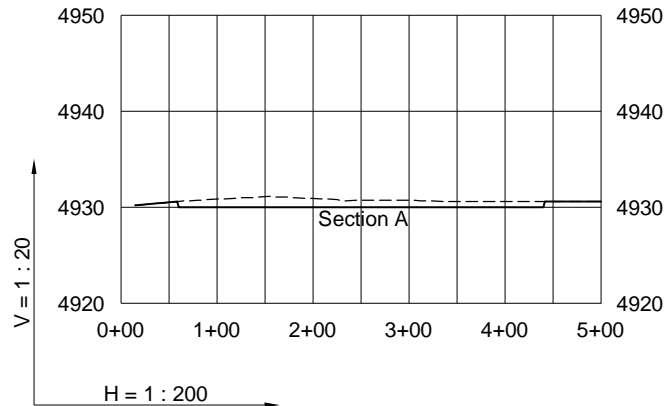
4/24/12



LAND SURVEYING AND MAPPING
LAFAYETTE - WINTER PARK
Ph 303 666 0379 Fx 303 665 6320

CONSTRUCTION LAYOUT DRAWING

2 of 2



4/24/12

----- Existing Ground
 _____ Proposed Grade



LAND SURVEYING AND MAPPING
LAFAYETTE - WINTER PARK
 Ph 303 666 0379 Fx 303 665 6320

CARRIZO OIL & GAS, INC
HEMBERGER 25-34-8-60 PAD

SW1/4 SE1/4 SECTION 25 T8N R60W
6th PM WELD COUNTY COLORADO