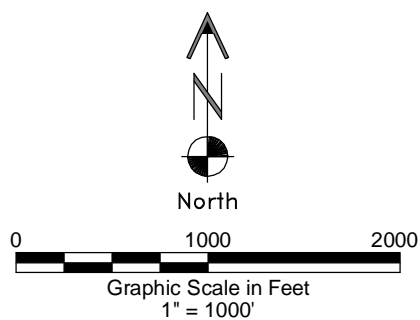
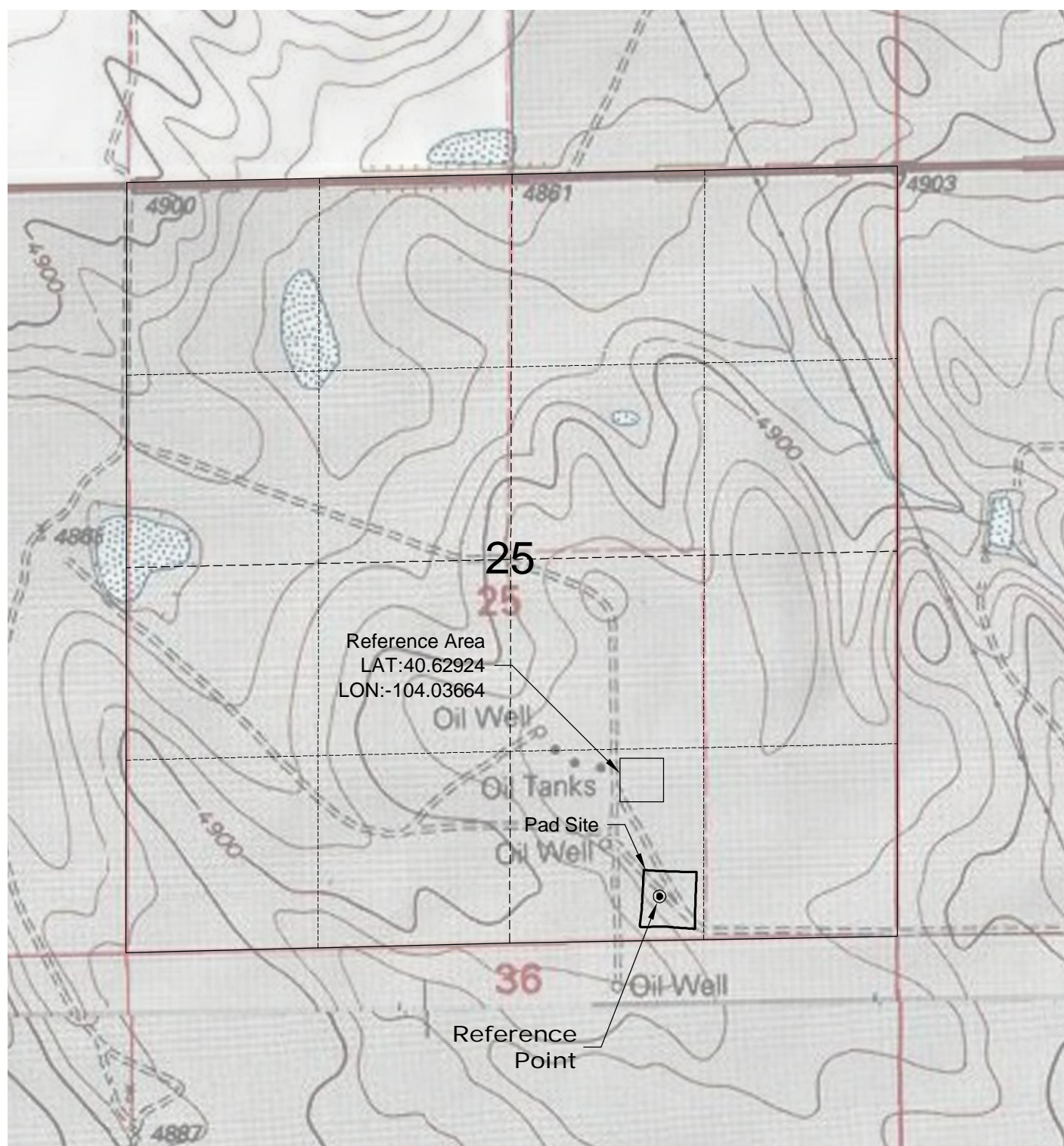


DWG: G:\GEOSURV\WeldzNorth\Corrizo 110004\Wellplats\Hemberger 25-34-8-50\Hemberger 25-34-8-50 F2A.dwg      USER: MTC      DATE: Apr 24, 2012 2:29pm



4/24/12



**LAND SURVEYING AND MAPPING**  
**LAFAYETTE - WINTER PARK**  
**Ph 303 666 0379 Fx 303 665 6320**

**CARRIZO OIL & GAS, INC**  
**HEMBERGER 25-34-8-60 PAD**

SW1/4 SE1/4 SECTION 25 T8N R60W  
6th PM WELD COUNTY COLORADO