

---

**WILLIAMS PRODUCTION RMT INC - EBUS**

---

PA 621-29  
Parachute  
Garfield County , Colorado

**Cement Surface Casing**

**Post Job Report**

## The Road to Excellence Starts with Safety

Sold To #: 300721	Ship To #: 2895941	Quote #:	Sales Order #: 9124153
Customer: WILLIAMS PRODUCTION RMT INC - EBUS		Customer Rep: David, Buddy	
Well Name: PA	Well #: 621-29	API/UWI #: 05-045-20260	
Field: Parachute	City (SAP): PARACHUTE	County/Parish: Garfield	State: Colorado
Lat: N 39.504 deg. OR N 39 deg. 30 min. 13.939 secs.		Long: W 108.019 deg. OR W -109 deg. 58 min. 51.031 secs.	
Contractor: NABORS	Rig/Platform Name/Num: NABORS 577		
Job Purpose: Cement Surface Casing			
Well Type: Development Well		Job Type: Cement Surface Casing	
Sales Person: MAYO, MARK	Srvc Supervisor: ROSS, CHARLES	MBU ID Emp #: 453128	

### Job Personnel

HES Emp Name	Exp Hrs	Emp #	HES Emp Name	Exp Hrs	Emp #	HES Emp Name	Exp Hrs	Emp #
KUKUS, CARLTON Dean		458577	ROSS, CHARLES Raymond		453128	WOLFE, JON P		485217
YOUNG, JEREMY R		418013						

### Equipment

HES Unit #	Distance-1 way	HES Unit #	Distance-1 way	HES Unit #	Distance-1 way	HES Unit #	Distance-1 way
10722398	60 mile	11139330	60 mile	11259881	60 mile	6564	60 mile

### Job Hours

Date	On Location Hours	Operating Hours	Date	On Location Hours	Operating Hours	Date	On Location Hours	Operating Hours

TOTAL	Total is the sum of each column separately							
-------	--	--	--	--	--	--	--	--

### Job

Formation Name							Date	Time	Time Zone
Formation Depth (MD)	Top			Bottom		Called Out	27 - Dec - 2011	00:45	MST
Form Type				BHST		On Location	27 - Dec - 2011	05:56	MST
Job depth MD	3268. ft			Job Depth TVD	3268. ft	Job Started	27 - Dec - 2011	22:58	MST
Water Depth				Wk Ht Above Floor	4. ft	Job Completed	27 - Dec - 2011	22:30	MST
Perforation Depth (MD)	From			To		Departed Loc	27 - Dec - 2011	23:50	MST

### Well Data

Description	New / Used	Max pressure psig	Size in	ID in	Weight lbm/ft	Thread	Grade	Top MD ft	Bottom MD ft	Top TVD ft	Bottom TVD ft
13 1/2 OPEN HOLE				13.5				.	3268.		
9 5/8" SURFACE CASING	Unknown		9.625	9.001	32.3			.	2530.		
9 5/8" SURFACE CASING	Unknown		9.625	8.921	36.			3250.	3520.		

### Sales/Rental/3<sup>rd</sup> Party (HES)

Description	Qty	Qty uom	Depth	Supplier
PLUG,CMTG,TOP,9 5/8,HWE,8.16 MIN/9.06 MA	1	EA		

### Tools and Accessories

Type	Size	Qty	Make	Depth	Type	Size	Qty	Make	Depth	Type	Size	Qty	Make
Guide Shoe					Packer					Top Plug			
Float Shoe					Bridge Plug					Bottom Plug			
Float Collar					Retainer					SSR plug set			
Insert Float										Plug Container			
Stage Tool										Centralizers			

### Miscellaneous Materials

Gelling Agt	Conc	Surfactant	Conc	Acid Type	Qty	Conc	%
Treatment Fld	Conc	Inhibitor	Conc	Sand Type	Size	Qty	

Fluid Data										
Stage/Plug #: 1										
Fluid #	Stage Type	Fluid Name	Qty	Qty uom	Mixing Density lbm/gal	Yield ft <sup>3</sup> /sk	Mix Fluid Gal/sk	Rate bbl/min	Total Mix Fluid Gal/sk	
1	Water Spacer		20.00	bbl	8.34	.0	.0	.0		
2	Lead Cement	VERSACEM (TM) SYSTEM (452010)	575.0	sacks	12.3	2.38	13.75		13.75	
		13.75 Gal FRESH WATER								
3	Tail Cement	VERSACEM (TM) SYSTEM (452010)	160.0	sacks	12.8	2.11	11.75		11.75	
		11.75 Gal FRESH WATER								
4	Displacement Fluid		251.00	bbl	8.34	.0	.0	.0		
Calculated Values		Pressures		Volumes						
Displacement		Shut In: Instant		Lost Returns		Cement Slurry		Pad		
Top Of Cement		5 Min		Cement Returns		Actual Displacement		Treatment		
Frac Gradient		15 Min		Spacers		Load and Breakdown		Total Job		
Rates										
Circulating		Mixing		Displacement		Avg. Job				
Cement Left In Pipe	Amount	43.2 ft	Reason	Shoe Joint						
Frac Ring # 1 @	ID	Frac ring # 2 @	ID	Frac Ring # 3 @	ID	Frac Ring # 4 @	ID			
The Information Stated Herein Is Correct				Customer Representative Signature						

*The Road to Excellence Starts with Safety*

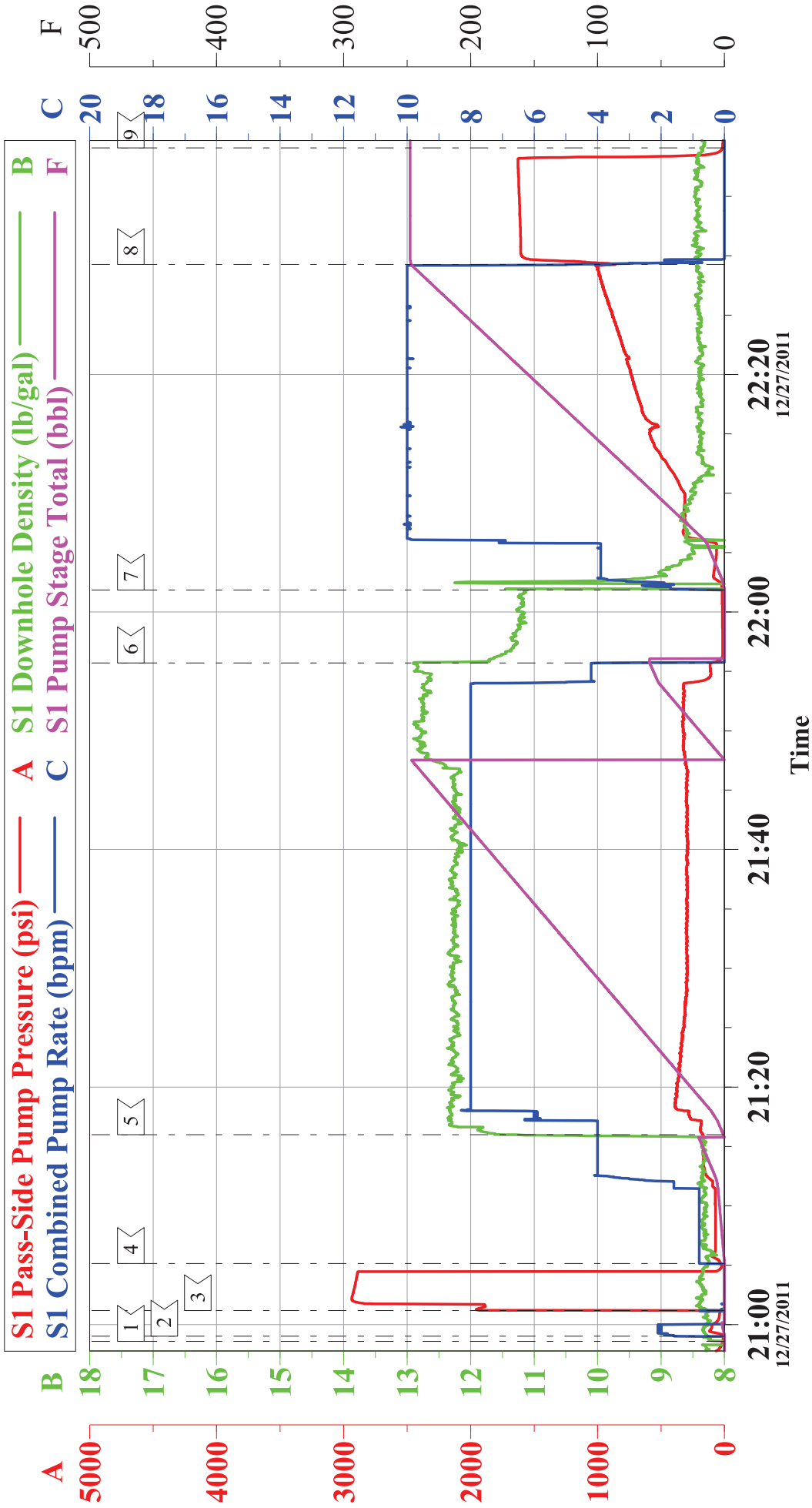
Sold To #: 300721	Ship To #: 2895941	Quote #:	Sales Order #: 9124153
Customer: WILLIAMS PRODUCTION RMT INC - EBUS		Customer Rep: David, Buddy	
Well Name: PA		Well #: 621-29	API/UWI #: 05-045-20260
Field: Parachute	City (SAP): PARACHUTE	County/Parish: Garfield	State: Colorado
Legal Description:			
Lat: N 39.504 deg. OR N 39 deg. 30 min. 13.939 secs.		Long: W 108.019 deg. OR W -109 deg. 58 min. 51.031 secs.	
Contractor: NABORS		Rig/Platform Name/Num: NABORS 577	
Job Purpose: Cement Surface Casing			Ticket Amount:
Well Type: Development Well		Job Type: Cement Surface Casing	
Sales Person: MAYO, MARK		Srvc Supervisor: ROSS, CHARLES	MBU ID Emp #: 453128

Activity Description	Date/Time	Cht #	Rate bbl/ min	Volume bbl		Pressure psig		Comments
				Stage	Total	Tubing	Casing	
Call Out	12/27/2011 00:45							
Pre-Convoy Safety Meeting	12/27/2011 03:35							WITH ALL HES EE'S
Depart from Service Center or Other Site	12/27/2011 03:45							
Arrive at Location from Service Center	12/27/2011 05:56							
Assessment Of Location Safety Meeting	12/27/2011 19:50							WITH ALL HES EE'S
Pre-Rig Up Safety Meeting	12/27/2011 19:55							WITH ALL HES EE'S
Rig-Up Equipment	12/27/2011 20:00							1-F550 PICKUP, 1-ELITE PUMP TRUCK, 1-660 CEMENT BULK TRUCK, 1-CEMENT BULK SILO, 1-HARD LINE TO RIG AND WASH UP OUT TO THE CELLAR FROM MANIFOLD, 1- 9 5/8" PLUG CONTAINER.
Pre-Job Safety Meeting	12/27/2011 20:40							WITH ALL HES EE'S AND RIG CREW
Start Job	12/27/2011 20:58							TD 3268, 9 5/8 32.3# CASING SET @ 2530, 36# CASING SET @ 3250, SJ 43.2, FC 3206.8 MW# 10, RIG CIRCULATED 1 HR 25 MIN PRIOR TO CEMENT JOB, HEAD AND CASING CHAINED DOWN BECAUSE OF PSI TO LIFT
Activity Description	Date/Time	Cht	Rate bbl/ min	Volume bbl		Pressure psig		Comments

		#		Stage	Total	Tubing	Casing	
Pump Water	12/27/2011 20:58		2	2			121.0	FILL LINES, FRESH WATER
Test Lines	12/27/2011 21:01							TEST TO 3000 PSI
Pump Spacer 1	12/27/2011 21:05		4	20			174.0	FRESH WATER
Pump Lead Cement	12/27/2011 21:15		8	243.7			388.0	575 SKS OF VERSACEM PUMPED @ 12.3 PPG, YIELD 2.38, WATER 13.75
Pump Tail Cement	12/27/2011 21:47		8	60.1			325.0	160 SKS OF VERSACEM PUMPED @ 12.8 PPG, YIELD 2.11, WATER 11.75
Shutdown	12/27/2011 21:56							
Drop Plug	12/27/2011 22:02							TOP PLUG, PLUG WENT
Pump Displacement	12/27/2011 22:02		10	241			1017.0	FRESH WATER
Slow Rate	12/27/2011 22:29		2	10			860.0	RATE SLOWED 10 BBL PRIOR TO CALCULATED DISPLACEMENT
Bump Plug	12/27/2011 22:30				251.4		800.0	BUMP PLUG. PRESSURED UP TO 1600 PSI.
Check Floats	12/27/2011 22:35							FLOATS HELD
End Job	12/27/2011 22:36							GOOD RETURNS THROUGHOUT JOB, NO MOVEMENT OF PIPE THROUGHOUT JOB, 100 BBLS OF CEMENT CIRCULATED TO THE PIT=235.9 SKS. USED 180 LBS OF SUGAR.
Post-Job Safety Meeting (Pre Rig-Down)	12/27/2011 22:40							WITH ALL HES EE'S
Rig-Down Equipment	12/27/2011 22:45							
Pre-Convoy Safety Meeting	12/27/2011 23:45							WITH ALL HES EE'S
Activity Description	Date/Time	Cht #	Rate bbl/min	Volume bbl		Pressure psig		Comments
				Stage	Total	Tubing	Casing	

Depart Location for Service Center or Other Site	12/27/2011 23:50							THANKS FOR USING GRAND JUNCTION HALLIBURTON CEMENT DEPARTMENT, CHUCK ROSS AND CREW
---	---------------------	--	--	--	--	--	--	---

# Williams Surface

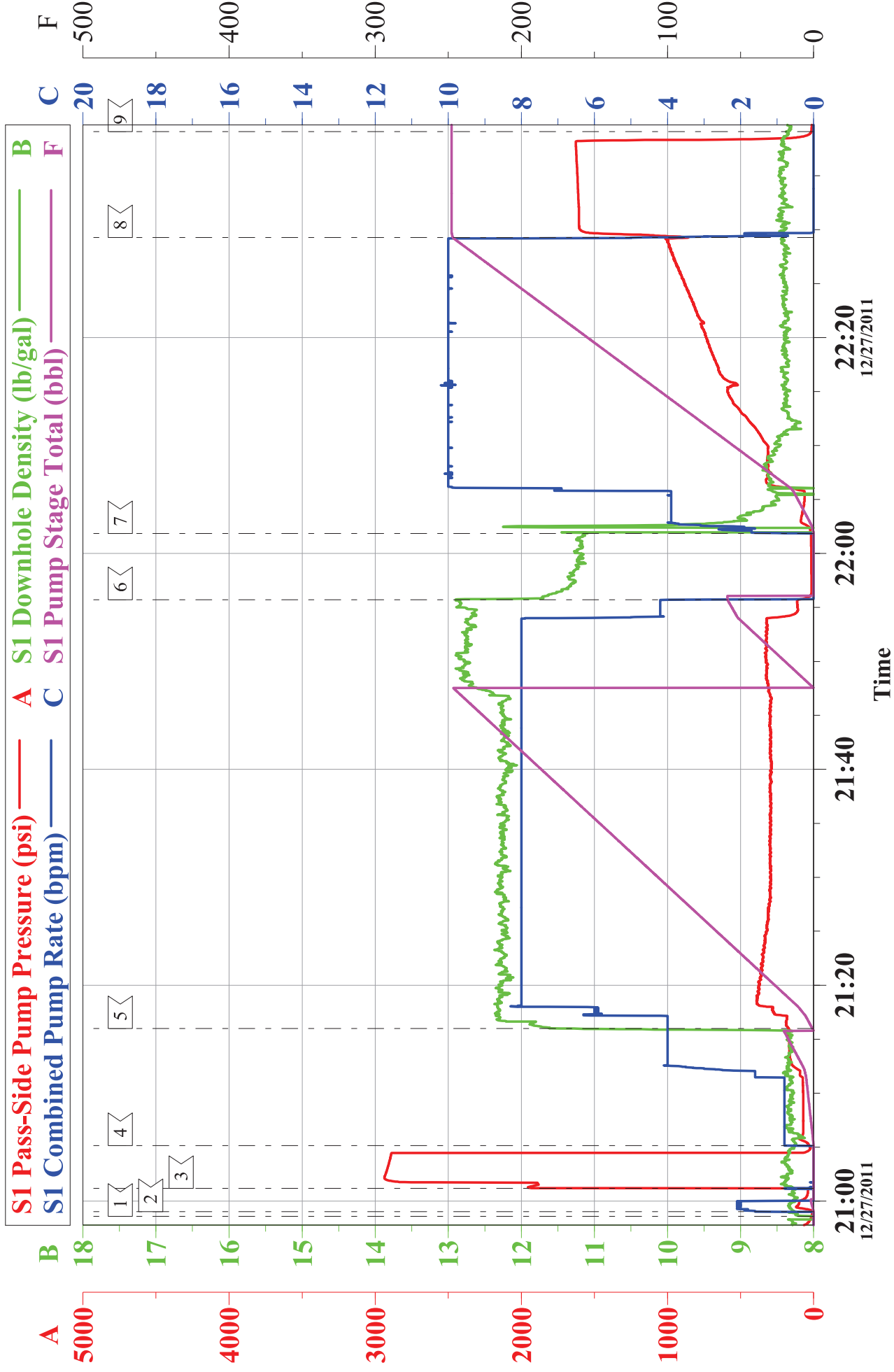


Local Event Log					
1	START JOB	20:58:35	2	FILL LINES	20:59:01
3	PRESSURE TEST	21:01:10	6	SHUT DOWN	21:55:43
4	PUMP SPACER	21:05:09	5	PUMP CEMENT	21:15:59
7	PUMP DISPLACEMENT	22:01:51	8	SHUT DOWN / BUMP PLUG	22:29:16
9	END JOB	22:39:05			

Customer:	Williams	Job Date:	27-Dec-2011	Sales Order #:	9124153
Well Description:	PA 621-29	Job type:	Surface	ADC Used:	Yes
Customer Rep:	Buddy David	Service Supervisor:	Chuck Ross	Operator/ Pump:	Carl Kukus / Elite 8

# Williams

## Surface



Customer: Williams	Job Date: 27-Dec-2011	Sales Order #: 9124153
Well Description: PA 621-29	Job type: Surface	ADC Used: Yes
Customer Rep: Buddy David	Service Supervisor: Chuck Ross	Operator/ Pump: Carl Kukus / Elite 8



# HALLIBURTON

## Water Analysis Report

Company: WILLIAMS  
Submitted by: CHUCK ROSS  
Attention: JON TROUT  
Lease: PA  
Well #: 621-29

Date: 12/27/2011  
Date Rec.: 12/27/2011  
S.O.#: 9124153  
Job Type: 9 5/8" SURFACE

Specific Gravity	MAX	1
pH	8	7
Potassium (K)	5000	200 Mg / L
Calcium (Ca)	500	120 Mg / L
Iron (FE2)	300	0 Mg / L
Chlorides (Cl)	3000	0 Mg / L
Sulfates (SO <sub>4</sub> )	1500	<200 Mg / L
Chlorine (Cl <sub>2</sub> )		NA Mg / L
Temp	40-80	55 Deg
Total Dissolved Solids		450 Mg / L

Respectfully: CHUCK ROSS

Title: CEMENTING SUPERVISOR

Location: Grand Junction, CO

NOTICE:

This report is limited to the described sample tested. Any person using or relying on this report agrees that Halliburton shall not be liable for any loss or damage whether due to act or omission resulting from such report or its use.

<b>Sales Order #:</b> 9124153	<b>Line Item:</b> 10	<b>Survey Conducted Date:</b> 12/27/2011
<b>Customer:</b> WILLIAMS PRODUCTION RMT INC - EBUS		<b>Job Type (BOM):</b> CMT SURFACE CASING BOM
<b>Customer Representative:</b> BUDDY DAVID		<b>API / UWI: (leave blank if unknown)</b> 05-045-20260
<b>Well Name:</b> PA		<b>Well Number:</b> 621-29
<b>Well Type:</b> Development Well	<b>Well Country:</b> United States of America	
<b>H2S Present:</b>	<b>Well State:</b> Colorado	<b>Well County:</b> Garfield

Dear Customer,

We hope that you were satisfied with the service quality of this job performed by Halliburton. It is the aim of our management and service personnel to deliver equipment and service of a standard unmatched in the service sector of the energy industry.

Please take the time to let us know if our performance met with your satisfaction. Please be as critical as possible to ensure we constantly improve our service. Your comments are of great value to us and are intended for the exclusive use of Halliburton.

### CUSTOMER SATISFACTION SURVEY

CATEGORY	CUSTOMER SATISFACTION RESPONSE	
Survey Conducted Date	The date the survey was conducted	12/27/2011
Survey Interviewer	The survey interviewer is the person who initiated the survey.	CHARLES ROSS (HB20648)
Customer Participation	Did the customer participate in this survey? (Y/N)	Yes
Customer Representative	Enter the Customer representative name	BUDDY DAVID
HSE	Was our HSE performance satisfactory? Circle Y or N	Yes
Equipment	Were you satisfied with our Equipment? Circle Y or N	Yes
Personnel	Were you satisfied with our people? Circle Y or N	Yes
Customer Comment	Customer's Comment	

CUSTOMER SIGNATURE

<b>Sales Order #:</b> 9124153	<b>Line Item:</b> 10	<b>Survey Conducted Date:</b> 12/27/2011
<b>Customer:</b> WILLIAMS PRODUCTION RMT INC - EBUS		<b>Job Type (BOM):</b> CMT SURFACE CASING BOM
<b>Customer Representative:</b> BUDDY DAVID		<b>API / UWI: (leave blank if unknown)</b> 05-045-20260
<b>Well Name:</b> PA		<b>Well Number:</b> 621-29
<b>Well Type:</b> Development Well	<b>Well Country:</b> United States of America	
<b>H2S Present:</b>	<b>Well State:</b> Colorado	<b>Well County:</b> Garfield

**KEY PERFORMANCE INDICATORS**

General	
<b>Survey Conducted Date</b> The date the survey was conducted	12/27/2011

Cementing KPI Survey	
<b>Type of Job</b> Select the type of job Cementing or Non-Cementing	0
<b>Select the Maximum Deviation range for this Job</b> What is the biggest deviation for the job you just completed? This may not be the maximum well deviation	Deviated
<b>Total Operating Time (hours)</b> Total Operating Hours Including Rig-up Pumping Rig-down Enter in decimal format	3.75
<b>HSE Incident/Accident/Injury</b> HSE Incident/Accident/Injury This should be recordable incidents only	No
<b>Was the job purpose achieved?</b> Was the job delivered correctly as per customer agreed design	Yes
<b>Operating Hours (Pumping Hours)</b> Total number of hours pumping fluid on this job Enter in decimal format	1.5
<b>Customer Non-Productive Rig Time (hrs)</b> Lost time due to Halliburton in the start execution or completion of an ordered service or product or delays in a follow-on service Enter in decimal format: 0 if none	0
<b>Type of Rig Classification Job Was Performed</b> Type Of Rig Classification Job Was Performed On	Drilling Rig Portable
<b>Number Of JSAs Performed</b> Number Of Jsas Performed	5
<b>Number of Unplanned Shutdowns</b> Unplanned shutdown is when injection stops for an period of time	0
<b>Was this a Primary Cement Job (Yes / No)</b>	Yes

<b>Sales Order #:</b> 9124153	<b>Line Item:</b> 10	<b>Survey Conducted Date:</b> 12/27/2011
<b>Customer:</b> WILLIAMS PRODUCTION RMT INC - EBUS		<b>Job Type (BOM):</b> CMT SURFACE CASING BOM
<b>Customer Representative:</b> BUDDY DAVID		<b>API / UWI: (leave blank if unknown)</b> 05-045-20260
<b>Well Name:</b> PA		<b>Well Number:</b> 621-29
<b>Well Type:</b> Development Well	<b>Well Country:</b> United States of America	
<b>H2S Present:</b>	<b>Well State:</b> Colorado	<b>Well County:</b> Garfield

Primar <input type="checkbox"/> Cement Job <input type="checkbox"/> Casing Job <input type="checkbox"/> Liner Job <input type="checkbox"/> or Tie-back <input type="checkbox"/> Job <input type="checkbox"/>	
<b>Did We Run Wiper Plugs?</b> Did We Run Top And Bottom Casing Wiper Plugs <input type="checkbox"/>	Top
<b>Min Density of Job Stayed in Design Density Range (0-100%)</b> Density Range defined as +/- 20 ppg Calculation: Total BBLs cement mixed at designed density divided by total BBLs of cement multiplied by 100	98
<b>Was Automated Density Control Used?</b> Was Automated Density Control (ADC) Used <input type="checkbox"/>	Yes
<b>Pump Rate (percent) of Job Stayed At Design Pump Rate</b> Pump Rate range defined as +/- 1 bbl/min Calculation: Total BBLs of fluid pumped at the designed rate divided by Total BBLs of fluid pumped multiplied by 100	98
<b>Nbr of Remedial Square Jobs Rqd by Competition</b> Number Of Remedial Square Jobs Required After Primary Job Performed By Competition	0
<b>Nbr of Remedial Plug Jobs Rqd by HES</b> Number Of Remedial Plug Jobs Needed After Primary Plug Pumped By HES	0
<b>Nbr of Remedial Square Jobs Rqd by HES</b> Number Of Remedial Square Jobs Required After Primary Job Performed By HES	0