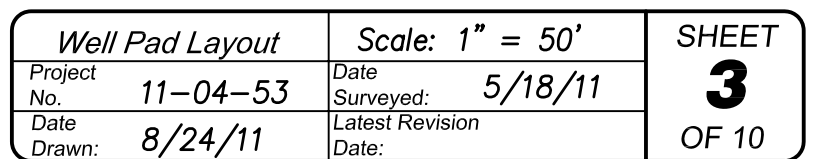
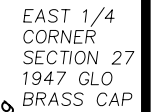


NE1/4 SE1/4, SECTION 27, T7S, R93W, 6th P.M.  
WELL PAD LAYOUT





SOUTHEAST  
CORNER  
SECTION 27  
1947 GLO  
BRASS CAP



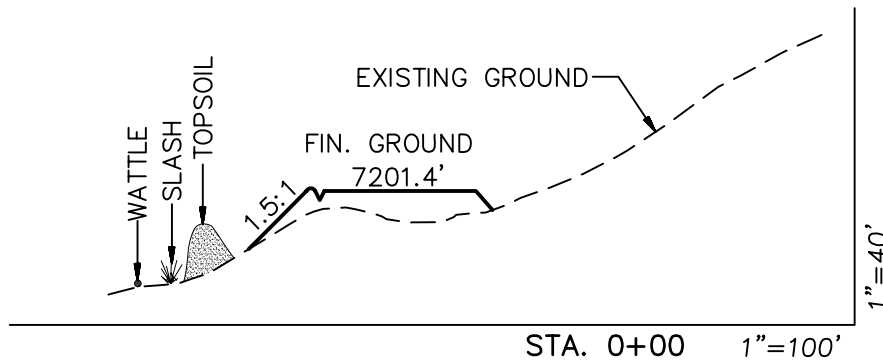
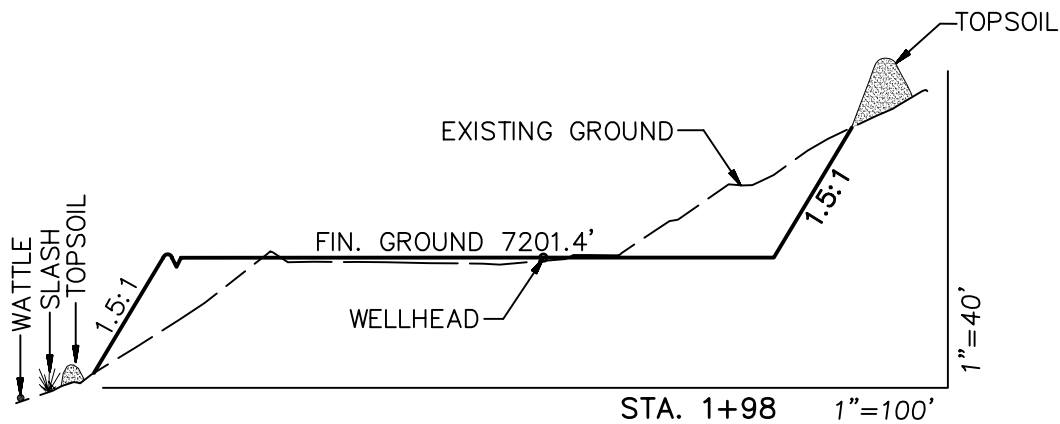
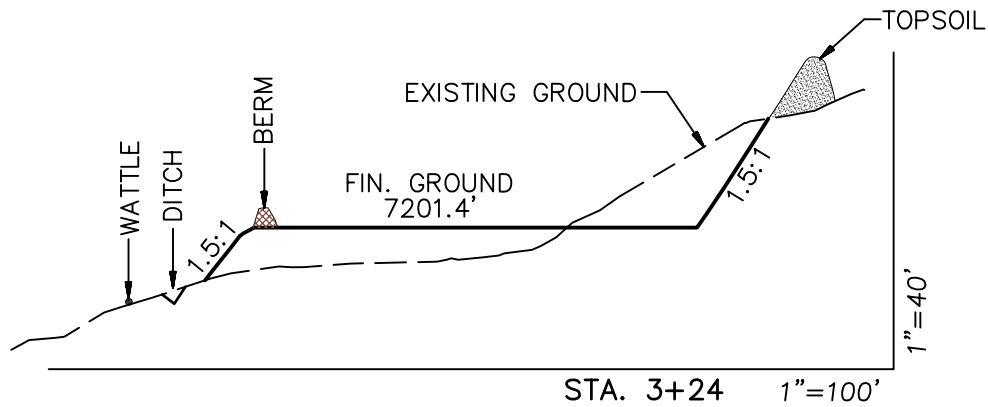
906 Main Street  
Evanston, Wyoming 82930  
Phone No. (307) 789-4545

<i>Surface Disturbance</i>		<i>Scale: 1" = 80'</i>	SHEET <b>7</b> OF 10
Project No.	11-04-53	Date Surveyed: 5/18/11	
Date Drawn:	8/24/11	Latest Revision Date:	

# EnCana Oil & Gas (USA) Inc.

## I27W Well Pad

### CROSS SECTIONS



#### SURFACE DISTURBANCE (IN ACRES)

Well Pad	2.14
Side Slopes	0.70
Stockpiles & Stormwater	0.69
TOTAL	3.53

#### NOTE:

ALL CUT AND FILL  
SLOPES ARE AT 1.5:1  
UNLESS OTHERWISE  
NOTED.

#### EARTHWORK QUANTITIES

(in Cubic Yards w/ 0% shrink/swell)

ITEM	CUT	FILL	6" TOPSOIL	EXCESS
PAD	12876	12876	Topsoil not included in Excavation	0
PIT	0	0		0
TOTALS	12876	12876	1890	0

#### Cross Sections

Project No. 11-04-53  
Date Drawn: 8/24/11

#### Scale: As Shown

Date Surveyed: 5/18/11  
Latest Revision Date:

#### SHEET

4

OF 10



906 Main Street  
Evanston, Wyoming 82930  
Phone No. (307) 789-4545