

## LEGEND

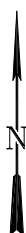
- EXISTING LOCATION
- EXISTING ROAD

## EnCana Oil & Gas (USA) Inc.

I27W PAD - ACCESS ROUTE  
SECTION 27, T7S, R93W, 6th, P.M.  
GARFIELD COUNTY, COLORADO



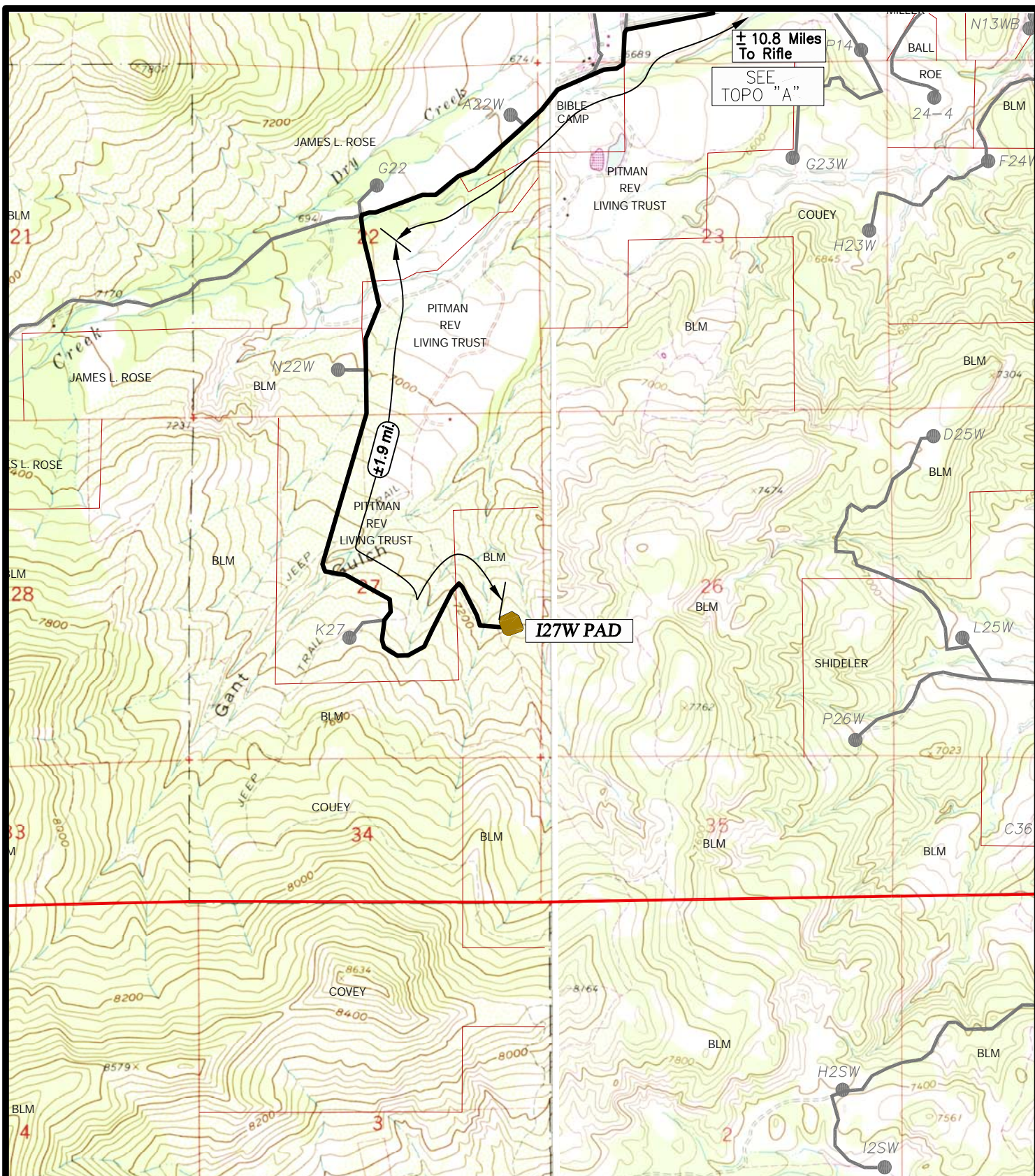
**Wasatch Surveying Associates**  
906 Main Street Evanston, Wyoming 82930  
Phone No. (307) 789-4545 Fax 307-789-5722



**TOPO A**

PROJECT NUMBER  
11-04-53  
DATE: 5/17/11  
SCALE: 1:100,000

**8**  
of 10

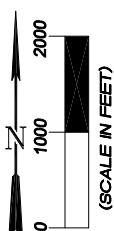


## LEGEND

- EXISTING ROAD
- EXISTING WELL PAD TO BE UPGRADED



**Wasatch Surveying Associates**  
 906 Main Street Evanston, Wyoming 82930  
 Phone No. (307) 789-4545 Fax 307-789-5722



## EnCana Oil & Gas (USA) Inc.

I27W Well Pad-Access Route  
 SECTION 27, T7S, R93W, 6th, P.M.  
 GARFIELD COUNTY, COLORADO

**TOPO B**

PROJECT NUMBER  
 11-04-53  
 DATE: 6/1/11  
 SCALE: 1" = 2000'

**9**  
 of 10