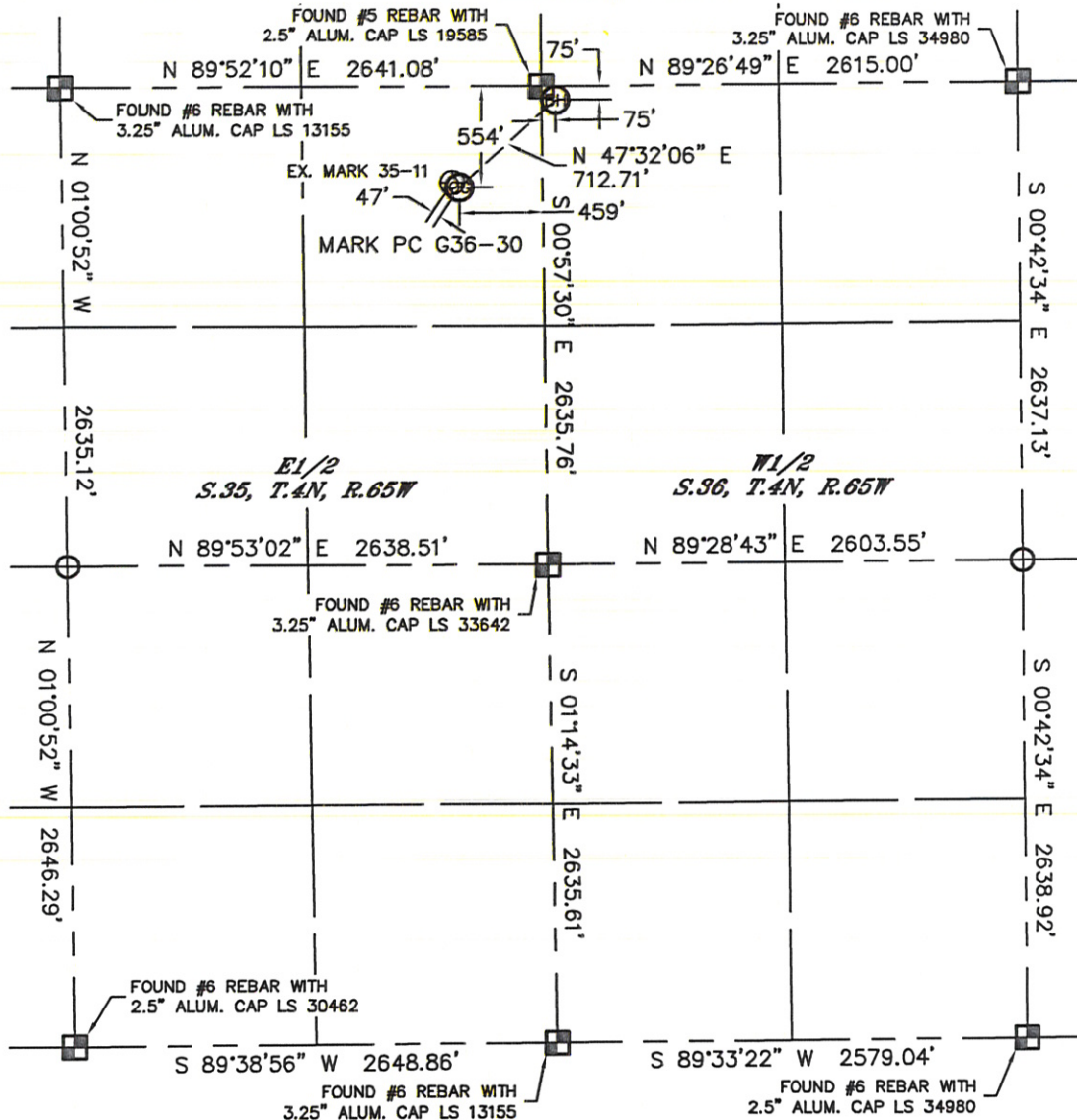


Lat40°, Inc. 1635 Foxtrail Drive, Suite 325 Loveland, CO 970-776-3321

WELL LOCATION CERTIFICATE

THIS MAP DOES NOT REPRESENT A BOUNDARY SURVEY

SECTION: 35
TOWNSHIP: 4N
RANGE: 65W



In accordance with a request from Matt Verbit with Noble Energy Inc., Lat40°, Inc. has determined the surface location of the MARK PC G36-30 to be 554' from the NORTH line and 459' from the EAST line as measured at right angles from the section lines of Section 35, Township 4 North, Range 65 West and the bottom hole to be 75' from the NORTH line and 75' from the WEST line as measured at right angles from the section lines of Section 36, Township 4 North, Range 65 West of the Sixth Principal Meridian, County of Weld, State of Colorado.

I hereby state that this Well Location Certificate was prepared by me, or under my direct supervision, that the fieldwork was completed on 10/21/2011, for and on behalf of Noble Energy Inc.. That this is not a Land Survey Plat or an Improvement Survey Plat, and that it is not to be relied upon for establishment of fence, building, or other future improvement lines.

NOTE:

- 1) Bearings shown are Grid Bearings of the Colorado State Plane Coordinate System, North Zone, North American Datum 1983/2007. The lineal dimensions as contained herein are based upon the "U.S. Survey Foot."
- 2) Ground elevations are based on an observed GPS elevation (NAVD 1988 DATUM).
- 3) NEAREST EXISTING WELL: MARK 35-11, 47'
- 4) IMPROVEMENTS: See LOCATION DRAWING for all visible improvements within 400' of disturbed area.
- 5) SURFACE USE: RANGELAND
- 6) INSTRUMENT OPERATOR: ADAM KELLY

SURFACE LOCATION
LATITUDE: 40.27446°N
LONGITUDE: 104.62272°W
PDOP: 1.3
ELEV: 4763'
1/4, 1/4: NE1/4NE1/4
NEAREST PROPERTY LINE: 459' E

BOTTOM HOLE
LATITUDE: 40.27577°N
LONGITUDE: 104.62082°W

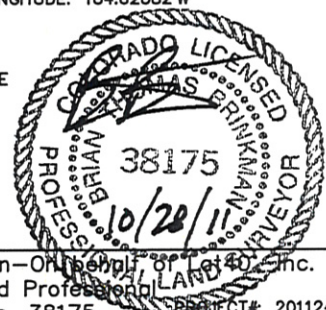
NOTE

According to Colorado law, you must commence any legal action based upon any defect in this W.L.C. within three years after you discover such defect. In no event, may any action based upon any defect in this survey be commenced more than ten years after the date of the certificate shown hereon. (13-80-105 C.R.S.)

LEGEND

- = ALIQUOT MONUMENT AS DESCRIBED
- = CALCULATED POSITION

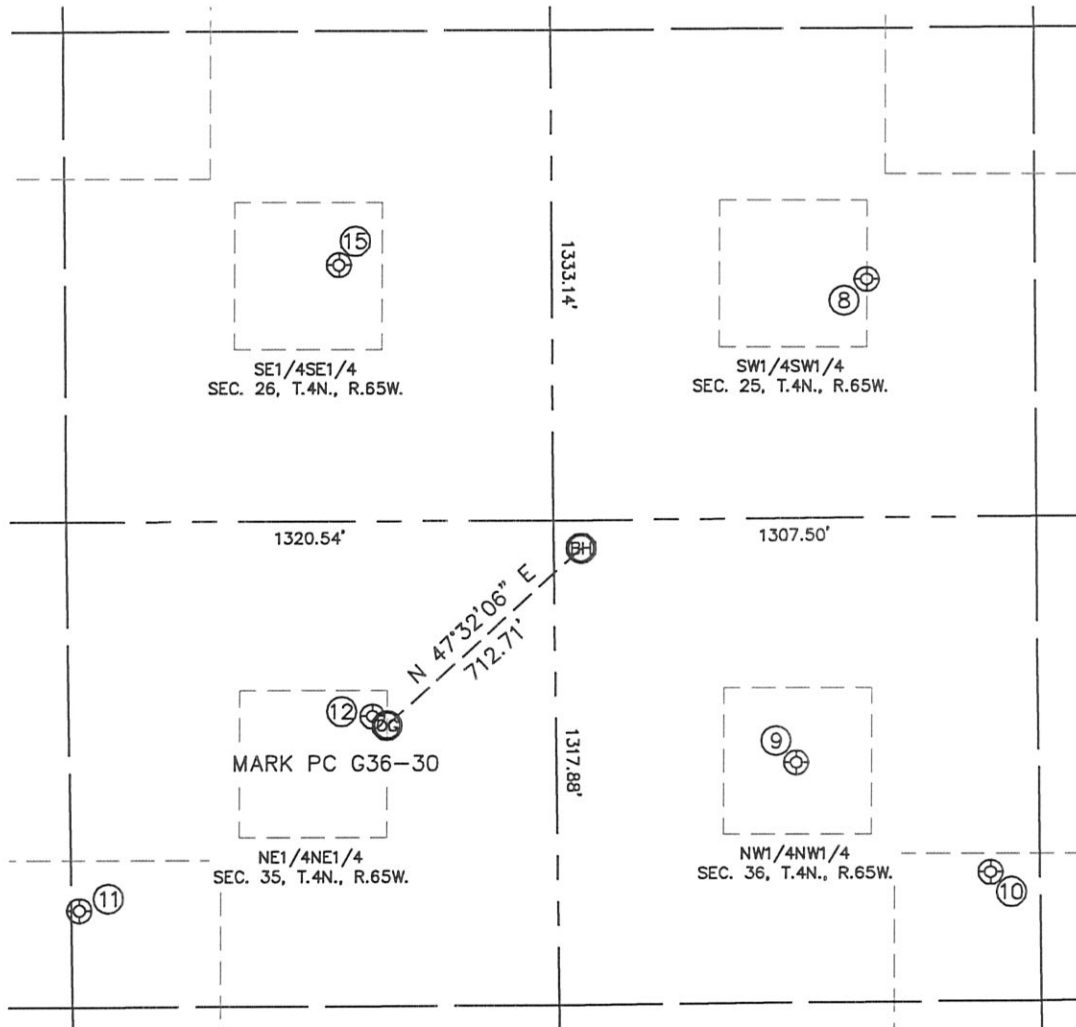
Brian T. Brinkman—On behalf of Lat40°, Inc.
Colorado Licensed Professional
Land Surveyor No. 38175
PROJECT#: 2011246



SITE SKETCH

MARK PC G36-30

SECTION: 35
TOWNSHIP: 4N
RANGE: 65W



⑧

BEEBE DRAW 3
SW1/4SW1/4
648' FSL
852' FWL
LAT-40.27775°N
LONG-104.61804°W
PDOP: 1.8
ELEV: 4794'

⑨

STATE R G 36-4
NW1/4NW1/4
664' FNL
649' FWL
LAT-40.27415°N
LONG-104.61875°W
PDOP: 2.5
ELEV: 4783'

⑩

OTIS STATE G36-19
NW1/4NW1/4
968' FNL
1172' FWL
LAT-40.27331°N
LONG-104.61687°W
PDOP: 2.5
ELEV: 4793'

⑪

MARK 35-15
NE1/4NE1/4
1054' FNL
1299' FEL
LAT-40.27311°N
LONG-104.62572°W
PDOP: 1.2
ELEV: 4762'

⑫

MARK 35-11
NE1/4NE1/4
529' FNL
498' FEL
LAT-40.27453°N
LONG-104.62286°W
PDOP: 1.2
ELEV: 4762'

⑮

BEEBE DRAW R G 26-16
SE1/4SE1/4
696' FSL
577' FEL
LAT-40.27789°N
LONG-104.62316°W
PDOP: 1.6
ELEV: 4768'

