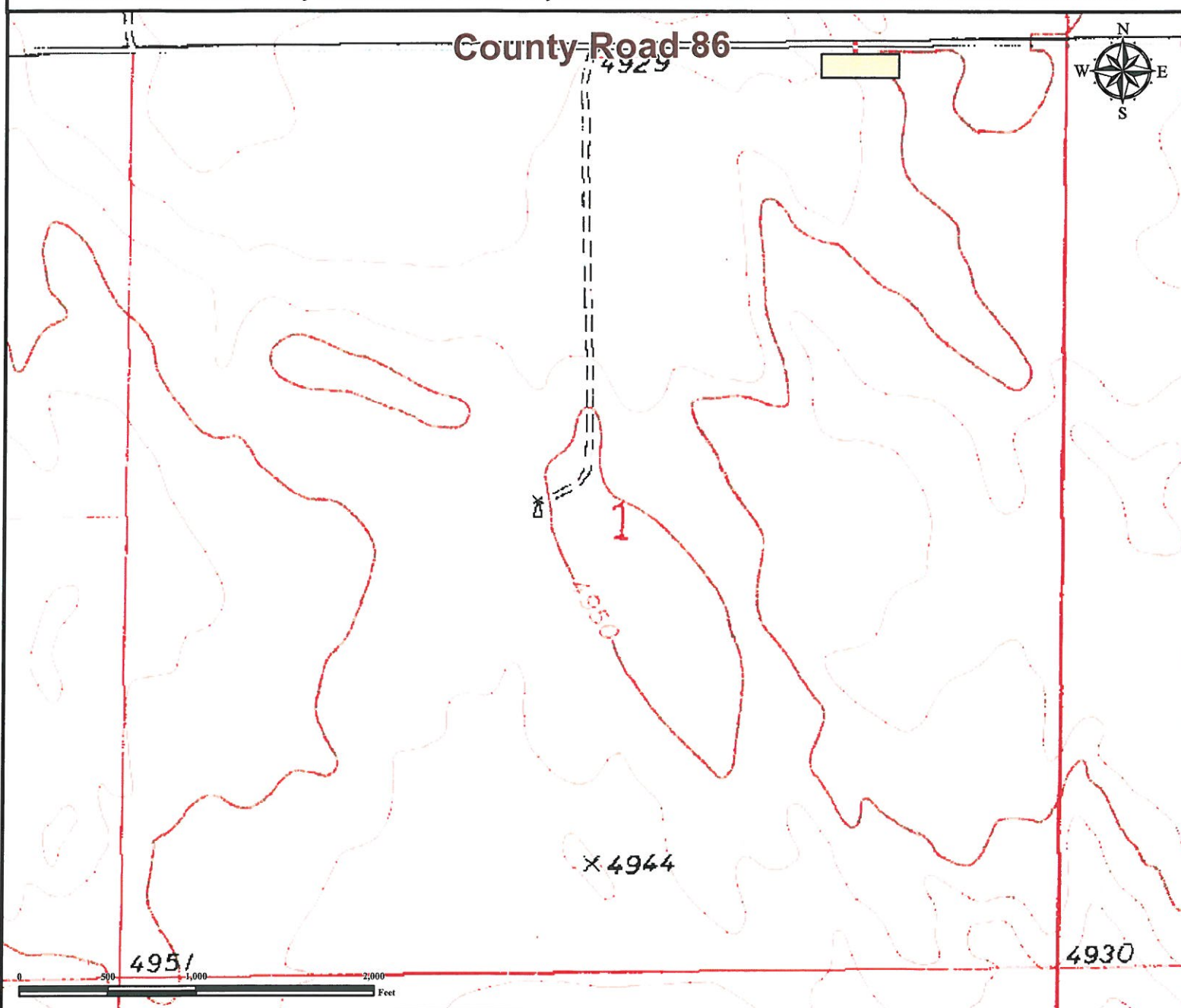


Access Road Map

GREEN 1-7 FACILITY

NE¼ NE¼ SECTION 01, TOWNSHIP 7 NORTH, RANGE 60 WEST OF THE 6TH PRINCIPAL MERIDIAN



From Briggsdale, CO: From the intersection of County Road 77/CO-392 and Highway 14/County Road 90, proceed East on Highway 14/County Road 90 ±13.9 miles to County Road 105.

Turn Right on County Road 105 and drive South for ±2.0 miles to County Road 86.

Turn Left County Road 86 and drive East for ±1.8 miles to proposed access road.

Turn Right onto proposed access road and continue south for ±0.01 mile to proposed facility location

Total distance from Briggsdale, CO to proposed facility location is ±17.71 miles.

*** Size of Facility has been exaggerated to be clearly visible at this scale.

Legend



Proposed Facility



Proposed Access Road

Reference Location

** All Measurements are Made from
★ Reference Point **

Lat: 40.611324° Long: -104.034410° (NAD83)
Elevation: 4946 Feet



Use our resources to find yours!
www.petro-fs.com
(303) 928-7128

Field Date: 03/22/2012
Drafting Date: 04/11/2012
Drafter: KLM
Checked By: BHF

Data Sources:
- TOPO courtesy of USGS

Prepared for:

Diversified Operating Corporation