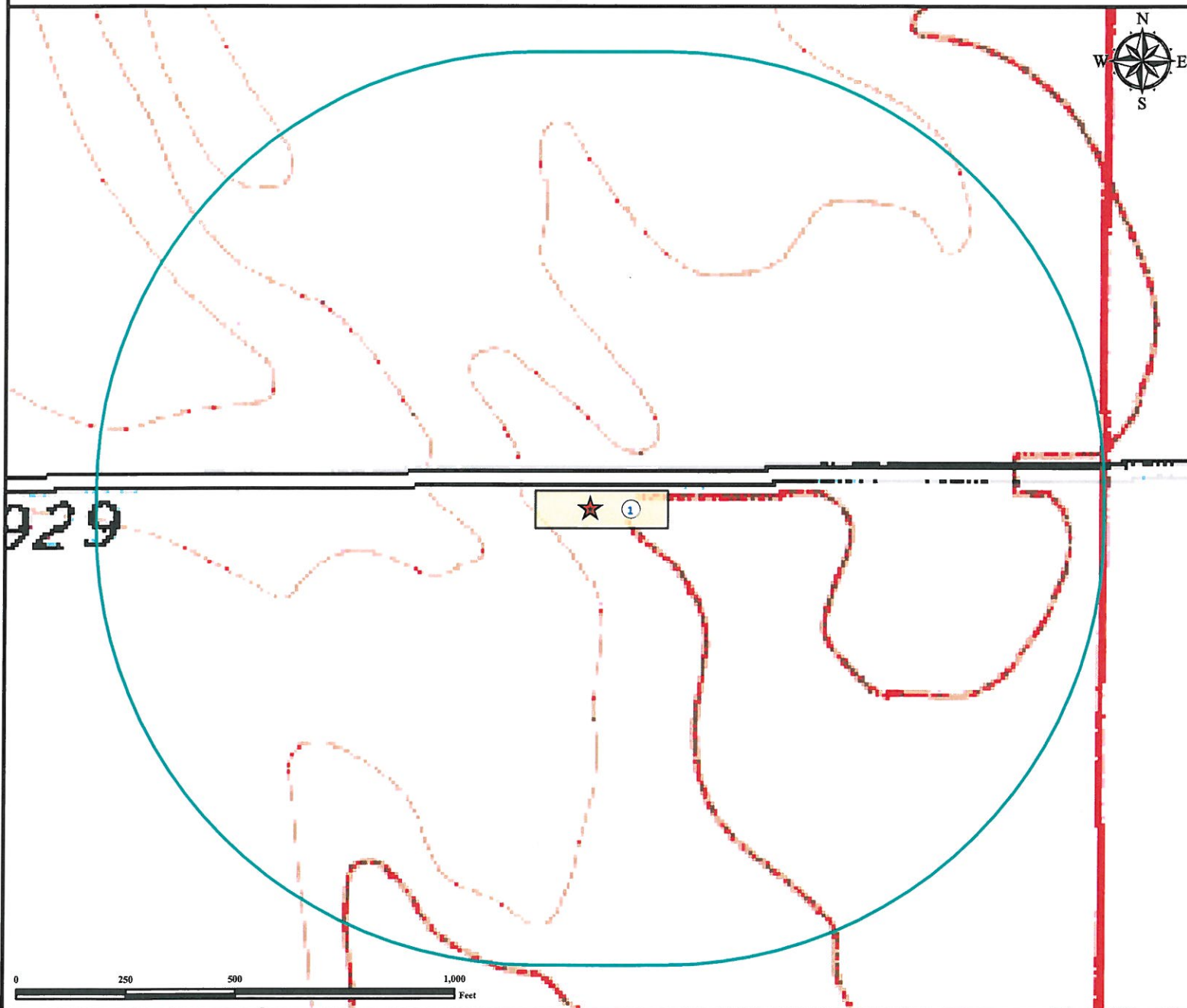


Hydrology Map

GREEN 1-7 FACILITY

NE¼ NE¼ SECTION 01, TOWNSHIP 7 NORTH, RANGE 60 WEST OF THE 6TH PRINCIPAL MERIDIAN



1. Proposed GREEN 1-7 FACILITY.

There are no surface waters within a 1000' radius of the proposed oil and gas facility location.

Legend

★ Reference Point

Proposed Facility

1000' Radius

Reference Location

** All Measurements are Made from
★ Reference Point **

Lat: 40.611324° Long: -104.034410° (NAD83)
Elevation: 4946 Feet



Use our resources to find yours!
www.petro-fs.com
(303) 928-7128

Field Date: 03/22/2012
Drafting Date: 04/11/2012
Drafter: KLM
Checked By: BHF

Data Sources:
TOPO courtesy USGS

Prepared for:

Diversified Operating Corporation