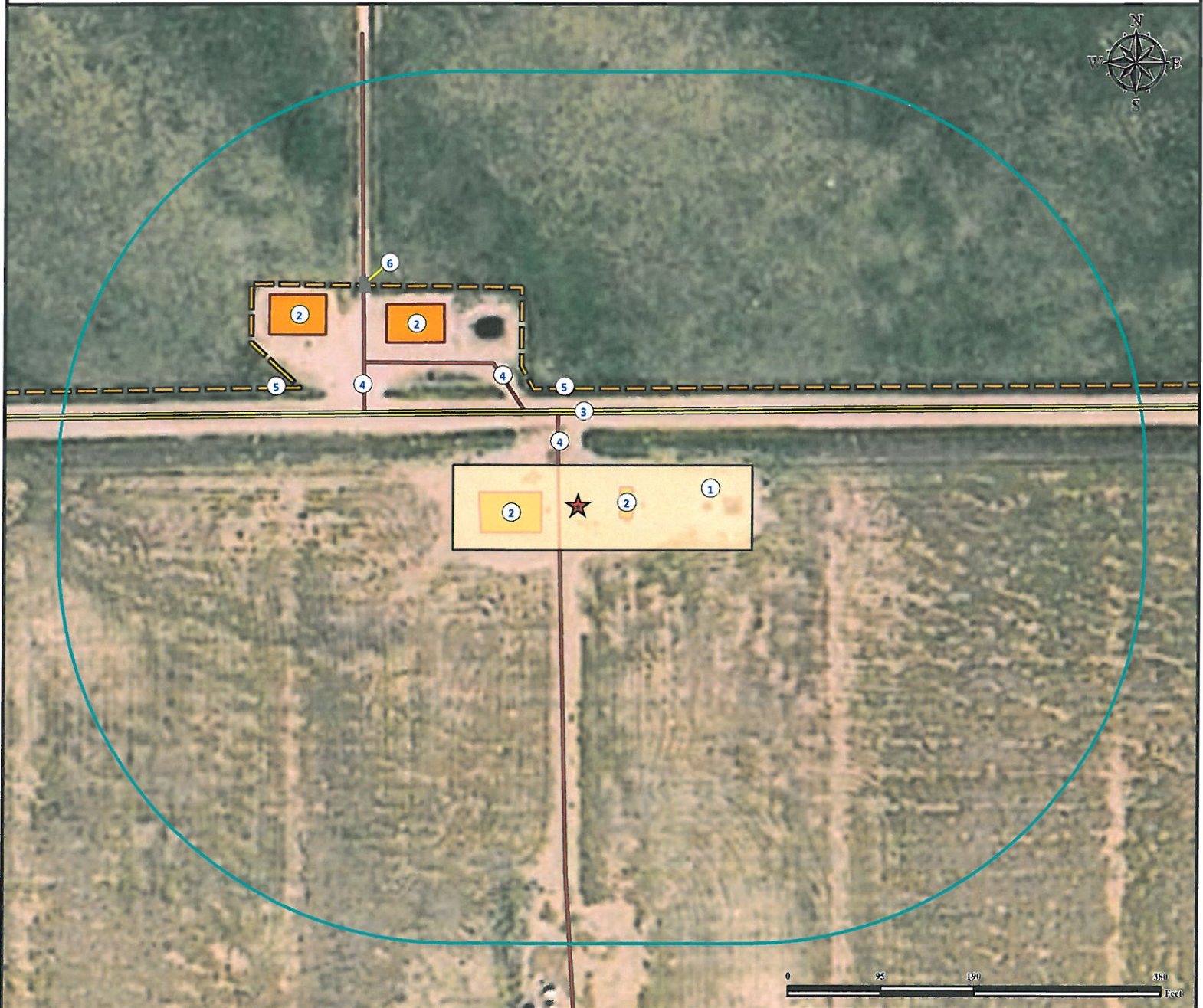


Location Drawing GREEN 1-7 FACILITY

NE¼ NE¼ SECTION 01, TOWNSHIP 7 NORTH, RANGE 60 WEST OF THE 6TH PRINCIPAL MERIDIAN



- | | |
|--|---|
| 1. Proposed GREEN 1-7 FACILITY. | 4. Private Roads are $\pm 20'$ W, $\pm 128'$ NW, and $\pm 250'$ NW. |
| 2. Existing Facilities are $\pm 37'$ W, $\pm 43'$ E, $\pm 214'$ NW, and $\pm 310'$ NW. | 5. Fences are $\pm 118'$ N and $\pm 307'$ NW. |
| 3. County Road 86 is $\pm 95'$ N. | 6. Gate is $\pm 312'$ NW. |

Legend

- | | | |
|---------------------|------------------------|----------------|
| ★ Reference Point | ■ Gate | — Private Road |
| □ Proposed Facility | ■ Facilities Enclosure | ≡ Public Road |
| □ 400' Radius | — Fence | |

Reference Location

** All Measurements are Made from

★ Reference Point **

Lat: 40.611324° Long: -104.034410° (NAD83)
Elevation: 4946 Feet

Surface Use: Non-Irrigated Crop



Use our resources to find yours!
www.petro-fs.com
(303) 928-7128

Field Date: 03/22/2012
Drafting Date: 04/10/2012
Drafter: KLM
Checked By: BHF

Data Sources:
- Aerial courtesy of NAIP (2009)

Prepared for:

Diversified Operating Corporation