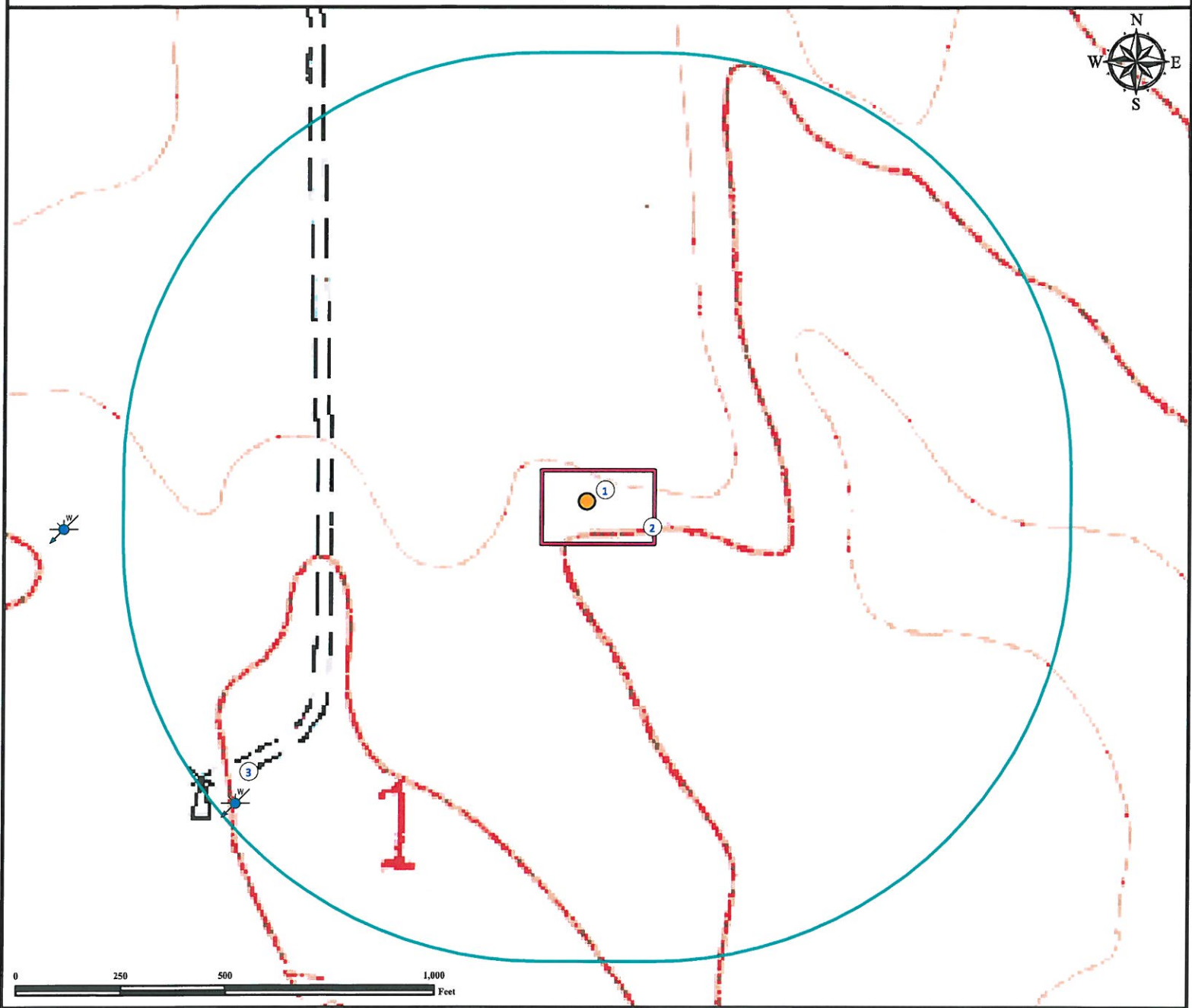


Hydrology Map

GREEN 1 - 7

SW¼ NE¼ SECTION 01, TOWNSHIP 7 NORTH, RANGE 60 WEST OF THE 6TH PRINCIPAL MERIDIAN



1. Proposed well GREEN 1-7.
2. Operational Disturbance Area.
3. Water Well (#95209, Well Abandoned) is ±1113' SW.

Legend

- Proposed Well
- Disturbance Area
- Water Well
- 1000' Radius

Reference Location

** All Measurements are Made from Reference Well GREEN 1-7 **

Lat: 40.606247° Long:-104.038158° (NAD83)
Elevation: 4942 Feet



Use our resources to find yours!
www.petro-fs.com
(303) 928-7128

Field Date: 03/22/2012
Drafting Date: 04/05/2012
Drafted: KLM
Checked By: BHF

Data Sources:
TOPO courtesy USGS
Water Wells courtesy of CDOWR

Prepared for:

