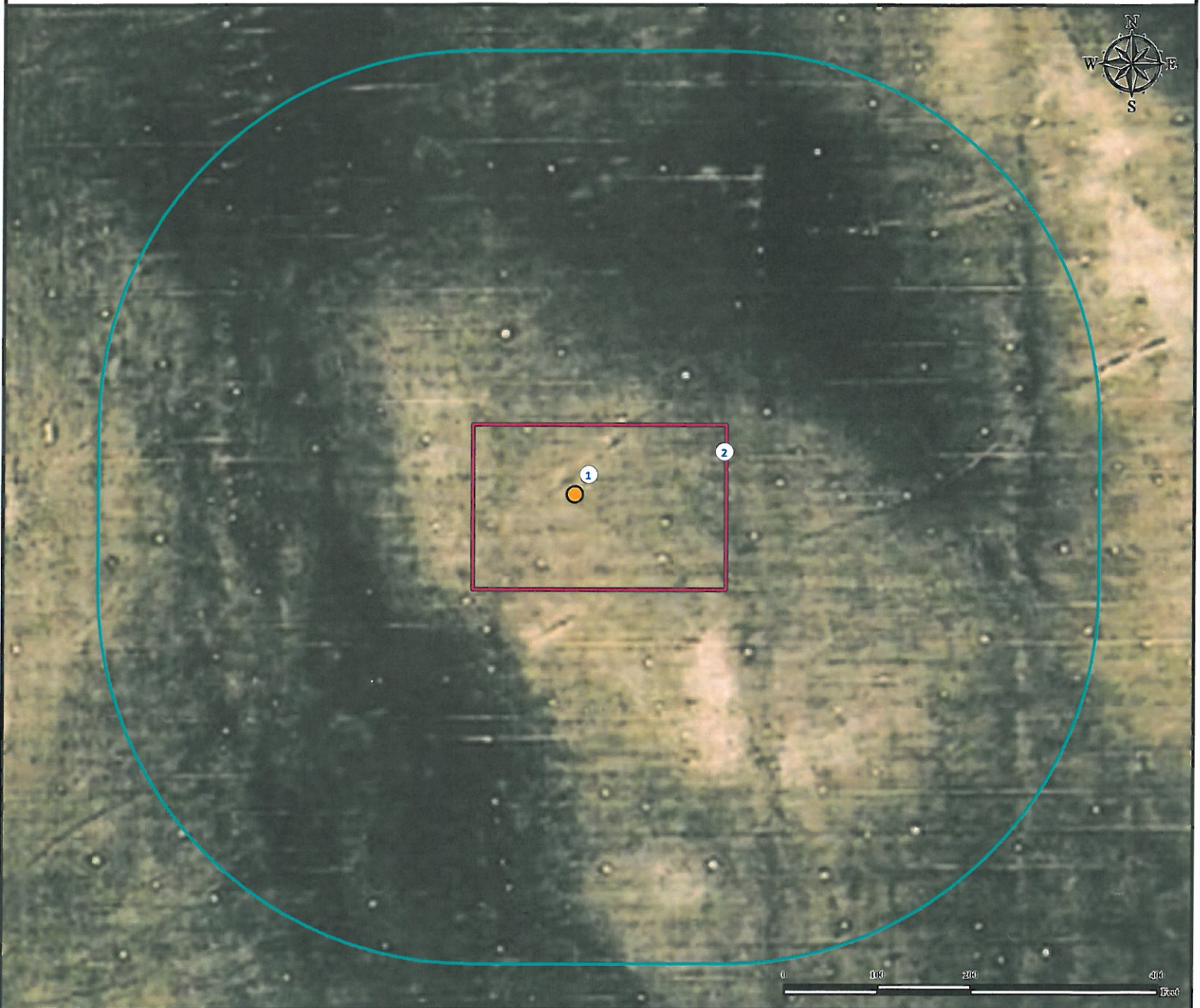


# Location Drawing

## GREEN 1 - 7

### Vertical Well Pad

SW¼ NE¼ SECTION 01, TOWNSHIP 7 NORTH, RANGE 60 WEST OF THE 6TH PRINCIPAL MERIDIAN



1. Proposed well GREEN 1-7.

2. Operational Disturbance Area.

There are no visible improvements within a 400' radius of the disturbance area of the proposed oil and gas location.

#### Legend

● Proposed Well      □ Disturbance Area      □ 400' Radius

#### Reference Location

\*\* All Measurements are Made from  
Reference Well GREEN 1-7 \*\*

Lat: 40.606247° Long: -104.038158° (NAD83)  
Elevation: 4942 Feet

Surface Use: Non-Irrigated Crop



Use our resources to find yours!  
[www.petro-fs.com](http://www.petro-fs.com)  
(303) 928-7128

Field Date: 03/22/2012  
Drafting Date: 04/05/2012  
Drafter: KLM  
Checked By: BHF

Data Sources:  
- Aerial courtesy of NAIP (2009)

Prepared for:

**Diversified Operating Corporation**