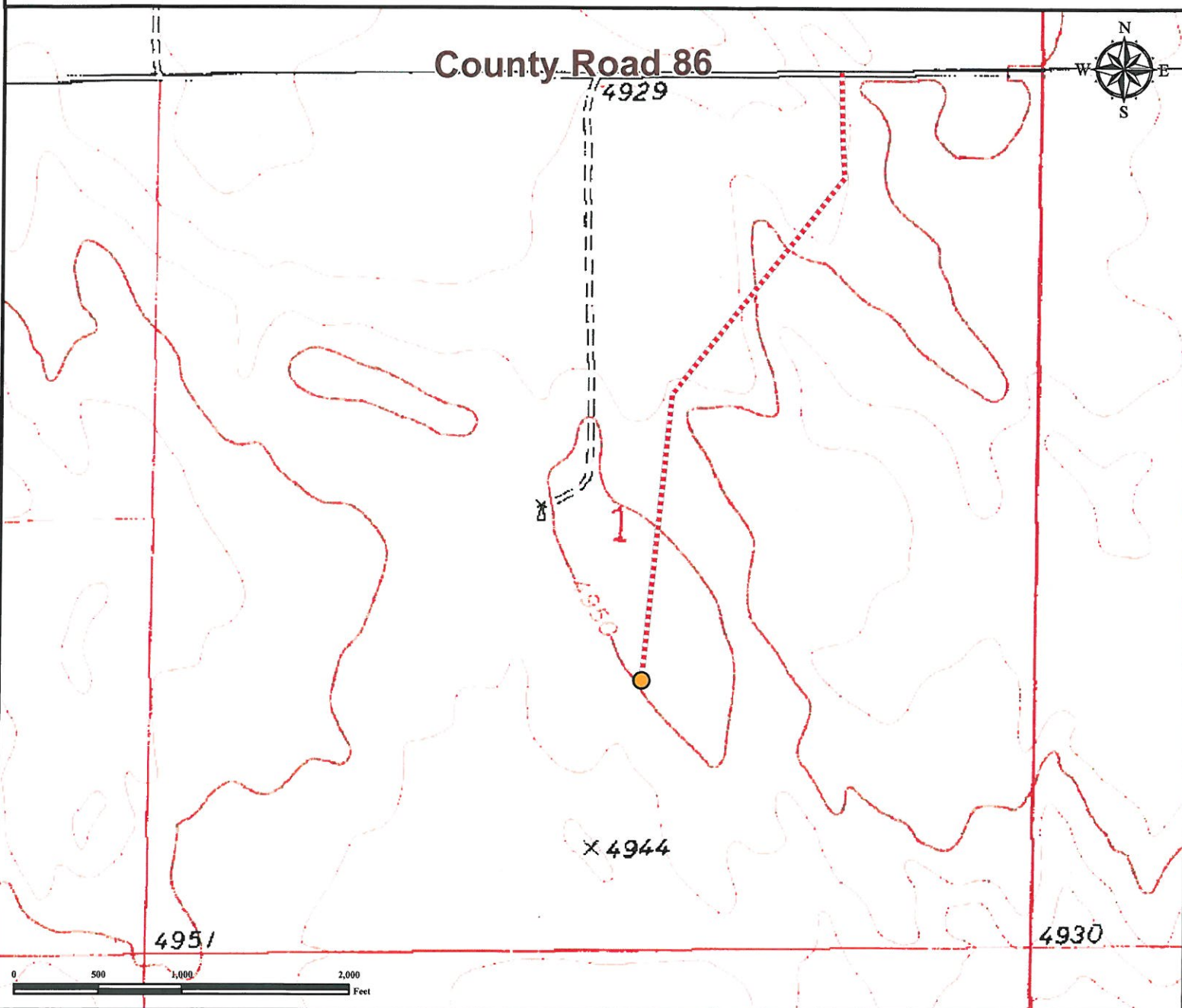


# Access Road Map

## GREEN 1-10

NW¼ SE¼ SECTION 01, TOWNSHIP 7 NORTH, RANGE 60 WEST OF THE 6TH PRINCIPAL MERIDIAN



**From Briggsdale, CO:** From the intersection of County Road 77/CO-392 and Highway 14/County Road 90, proceed East on Highway 14/County Road 90 ±13.9 miles to County Road 105.

**Turn Right** on County Road 105 and drive South for ±2.0 miles to County Road 86.

**Turn Left** County Road 86 and drive East for ±1.8 miles to proposed access road.

**Turn Right** onto proposed access road and continue south for ±0.1 mile. Follow road Southwest and continue ±0.3 mile. Continue on proposed access road and drive South for ±0.3 mile to proposed well pad location.

Total distance from Briggsdale, CO to proposed well pad location is ±18.4 miles.

### Legend

● Proposed Well Pad

---- Proposed Access Road

### Reference Location

\*\* All Measurements are Made from Reference Well GREEN 1-10 \*\*

Lat: 40.601578° Long: -104.038833° (NAD83)  
Elevation: 4948 Feet



Use our resources to find yours!

[www.petro-fs.com](http://www.petro-fs.com)  
(303) 928-7128

Field Date: 03/22/2012  
Drafting Date: 04/05/2012  
Drafter: KLM  
Checked By: BHF

Data Sources:  
- TOPO courtesy of USGS

Prepared for:

**Diversified Operating Corporation**