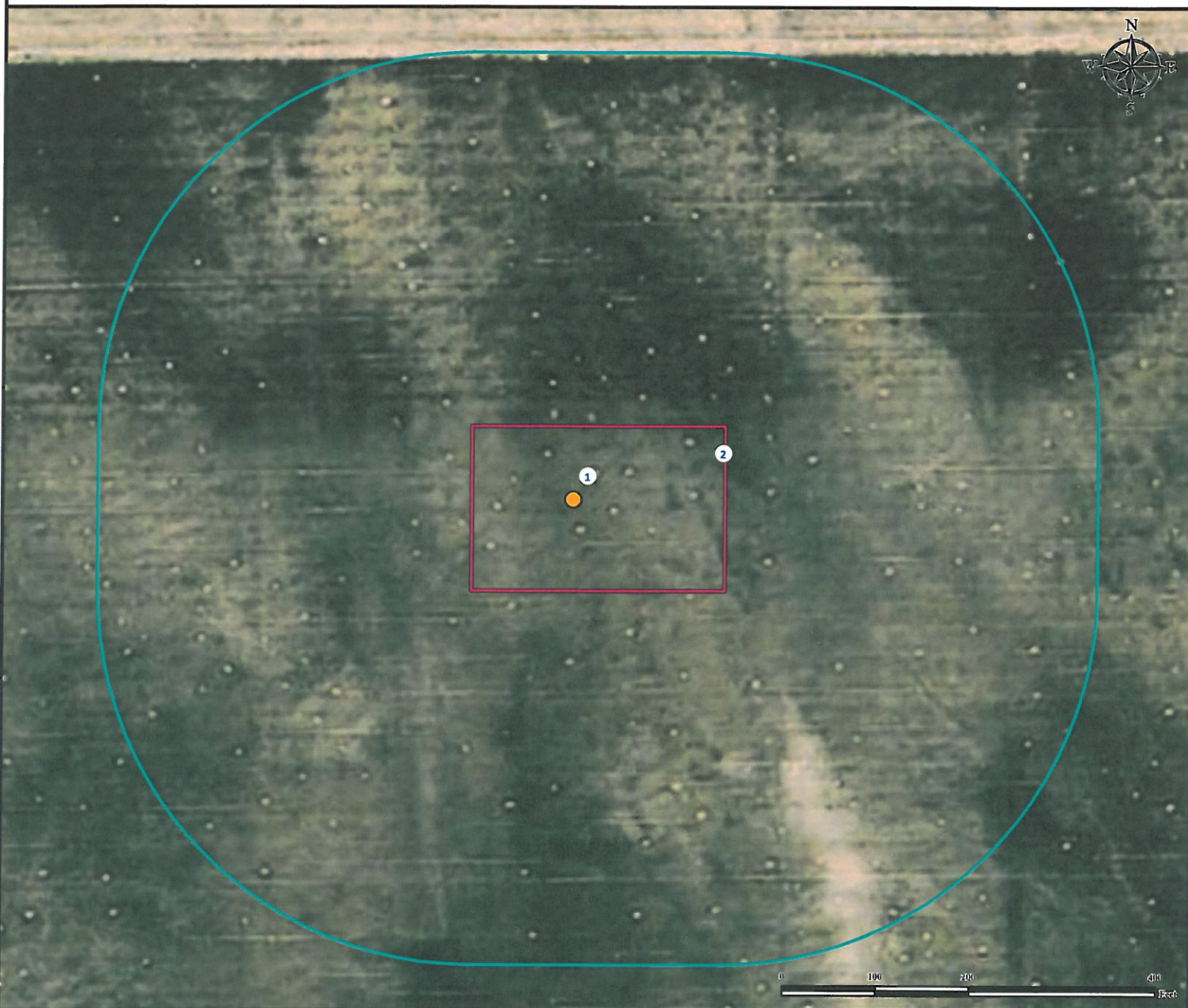


Location Drawing

GREEN 1-16

Vertical Well Pad

SE¼ SE¼ SECTION 01, TOWNSHIP 7 NORTH, RANGE 60 WEST OF THE 6TH PRINCIPAL MERIDIAN



1. Proposed well GREEN 1-16.

2. Operational Disturbance Area.

There are no visible improvements within a 400' radius of the disturbance area of the proposed oil and gas location.

Legend

● Proposed Well □ Disturbance Area □ 400' Radius

Reference Location

** All Measurements are Made from
Reference Well GREEN 1-16 **

Lat: 40.599389° Long: -104.035270° (NAD83)
Elevation: 4943 Feet

Surface Use: Non-Irrigated Crop

Prepared for:

Diversified Operating Corporation



Use our resources to find yours!
www.petro-fs.com
(303) 928-7128

Field Date: 03/22/2012
Drafting Date: 04/04/2012
Drafter: KLM
Checked By: BHF

Data Sources:
- Aerial courtesy of NAIP (2009)