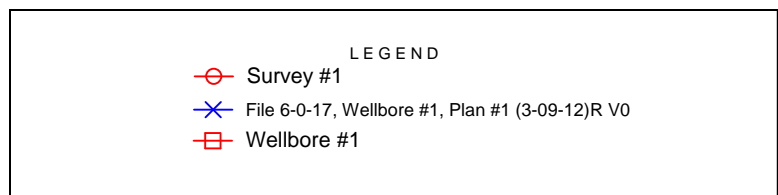
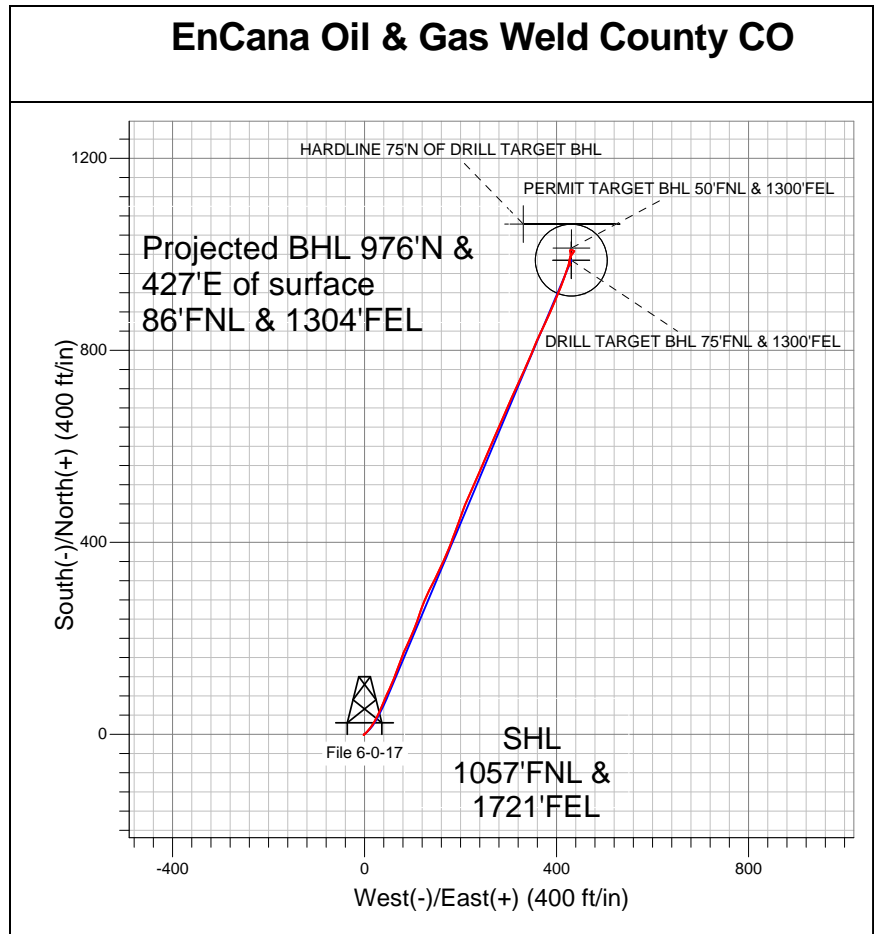
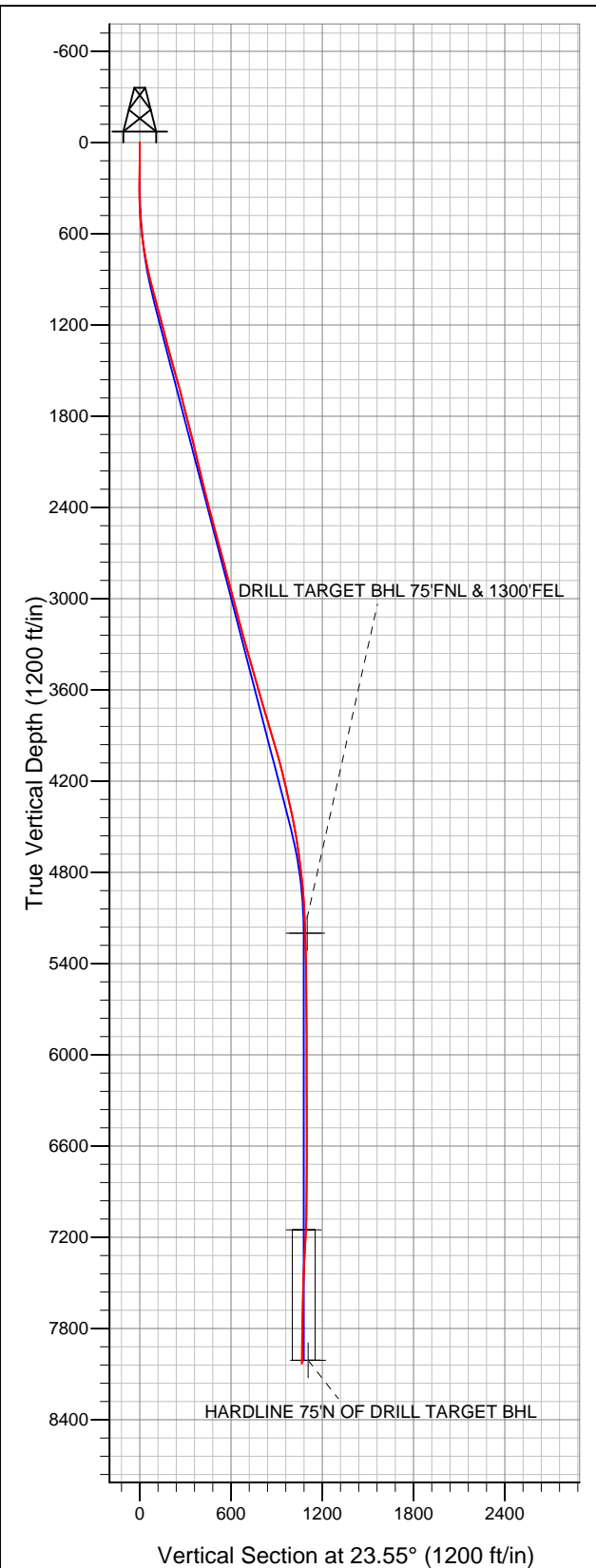




Well Name: File 6-0-17

Surface Location: File 31-17 Pad Sec.17-T2N-R68W
North American Datum 1983 US State Plane 1983Colorado Northern Zone
Ground Elevation: 4883.0

+N/-S	+E/-W	Northing	Easting	Latitude	Longitude	Slot
0.0	0.0	1295285.00	3133140.00	40.142970	-105.023760	
		Original Well Elev	WELL @ 4896.0ft (Original Well Elev)			



Final Survey Plot

Projected Final Survey -
8165'MD & 8030'TVD @ 1065'VS
0.70 deg Inc 246.40 deg AZ

Project: SEC.17-T2N-R68W
Site: File 31-17 Pad Sec.17-T2N-R68W
Well: File 6-0-17
Plan: Wellbore #1



EnCana Oil & Gas Weld County CO

SEC.17-T2N-R68W

File 31-17 Pad Sec.17-T2N-R68W

File 6-0-17

Wellbore #1

Survey: Survey #1

Standard Survey Report

20 March, 2012

Company:	EnCana Oil & Gas Weld County CO	Local Co-ordinate Reference:	Well File 6-0-17
Project:	SEC.17-T2N-R68W	TVD Reference:	WELL @ 4896.0ft (Original Well Elev)
Site:	File 31-17 Pad Sec.17-T2N-R68W	MD Reference:	WELL @ 4896.0ft (Original Well Elev)
Well:	File 6-0-17	North Reference:	True
Wellbore:	Wellbore #1	Survey Calculation Method:	Minimum Curvature
Design:	Wellbore #1	Database:	Landmark

Project	SEC.17-T2N-R68W, Weld County, CO		
Map System:	US State Plane 1983	System Datum:	Mean Sea Level
Geo Datum:	North American Datum 1983		Using Well Reference Point
Map Zone:	Colorado Northern Zone		Using geodetic scale factor

Site		File 31-17 Pad Sec.17-T2N-R68W			
Site Position:		Northing:	1,295,292.25 ft	Latitude:	40.142990
From:	Lat/Long	Easting:	3,133,131.57 ft	Longitude:	-105.023790
Position Uncertainty:	0.0 ft	Slot Radius:	"	Grid Convergence:	0.31 °

Well	File 6-0-17				
Well Position	+N/-S	0.0 ft	Northing:	1,295,285.00 ft	Latitude: 40.142970
	+E/-W	0.0 ft	Easting:	3,133,140.00 ft	Longitude: -105.023760
Position Uncertainty		0.0 ft	Wellhead Elevation:	ft	Ground Level: 4,883.0 ft

Wellbore	Wellbore #1				
Magnetics	Model Name	Sample Date	Declination (°)	Dip Angle (°)	Field Strength (nT)
	IGRF2010	3/9/2012	8.88	66.77	52,890

Design	Wellbore #1				
Audit Notes:					
Version:	1.0	Phase:	ACTUAL	Tie On Depth:	0.0
Vertical Section:	Depth From (TVD) (ft)	+N/-S (ft)	+E/-W (ft)	Direction (°)	
	0.0	0.0	0.0	23.55	

Survey Program		Date	3/20/2012		
From (ft)	To (ft)	Survey (Wellbore)	Tool Name	Description	
79.0	8,165.0	Survey #1 (Wellbore #1)	MWD	MWD - Standard	

Survey	Wellbore Data									
	Measured Depth (ft)	Inclination (°)	Azimuth (°)	Vertical Depth (ft)	+N/-S (ft)	+E/-W (ft)	Vertical Section (ft)	Dogleg Rate (°/100ft)	Build Rate (°/100ft)	Turn Rate (°/100ft)
Survey A	0.0	0.00	0.00	0.0	0.0	0.0	0.0	0.00	0.00	0.00
	79.0	0.50	238.80	79.0	-0.2	-0.3	-0.3	0.63	0.63	0.00
	170.0	1.10	239.50	170.0	-0.8	-1.4	-1.3	0.66	0.66	0.77
	262.0	0.30	221.10	262.0	-1.5	-2.3	-2.3	0.89	-0.87	-20.00
	323.0	0.30	51.70	323.0	-1.5	-2.3	-2.3	0.98	0.00	-277.71
	414.0	2.20	48.50	414.0	-0.2	-0.8	-0.5	2.09	2.09	-3.52
	506.0	4.20	44.40	505.8	3.4	2.9	4.3	2.19	2.17	-4.46
	597.0	7.00	43.10	596.4	9.8	9.0	12.6	3.08	3.08	-1.43
	689.0	8.60	31.80	687.5	19.8	16.5	24.7	2.40	1.74	-12.28
	781.0	11.40	27.70	778.1	33.7	24.3	40.6	3.14	3.04	-4.46
	874.0	13.30	23.50	869.0	51.6	32.9	60.5	2.26	2.04	-4.52
	967.0	14.90	23.20	959.2	72.4	41.8	83.1	1.72	1.72	-0.32
	997.0	15.00	24.30	988.1	79.5	45.0	90.8	1.00	0.33	3.67

Company:	EnCana Oil & Gas Weld County CO	Local Co-ordinate Reference:	Well File 6-0-17
Project:	SEC.17-T2N-R68W	TVD Reference:	WELL @ 4896.0ft (Original Well Elev)
Site:	File 31-17 Pad Sec.17-T2N-R68W	MD Reference:	WELL @ 4896.0ft (Original Well Elev)
Well:	File 6-0-17	North Reference:	True
Wellbore:	Wellbore #1	Survey Calculation Method:	Minimum Curvature
Design:	Wellbore #1	Database:	Landmark

Survey										
Measured Depth (ft)	Inclination (°)	Azimuth (°)	Vertical Depth (ft)	+N/-S (ft)	+E/-W (ft)	Vertical Section (ft)	Dogleg Rate (°/100ft)	Build Rate (°/100ft)	Turn Rate (°/100ft)	
1,039.0	15.10	24.50	1,028.7	89.4	49.5	101.8	0.27	0.24	0.48	
1,060.0	14.60	24.80	1,049.0	94.3	51.7	107.1	2.41	-2.38	1.43	
1,152.0	14.60	21.00	1,138.0	115.7	60.7	130.3	1.04	0.00	-4.13	
1,245.0	15.00	20.60	1,227.9	137.9	69.2	154.0	0.44	0.43	-0.43	
1,338.0	14.30	20.20	1,317.9	159.9	77.4	177.5	0.76	-0.75	-0.43	
1,431.0	15.70	24.60	1,407.7	182.2	86.6	201.6	1.94	1.51	4.73	
1,524.0	15.60	24.50	1,497.3	205.0	97.0	226.7	0.11	-0.11	-0.11	
1,648.0	15.30	20.00	1,616.8	235.5	109.5	259.7	1.00	-0.24	-3.63	
1,741.0	14.60	17.60	1,706.7	258.2	117.2	283.6	1.00	-0.75	-2.58	
1,833.0	13.80	22.50	1,795.9	279.4	124.9	306.1	1.57	-0.87	5.33	
1,926.0	14.20	26.00	1,886.1	299.9	134.2	328.6	1.01	0.43	3.76	
2,019.0	13.90	29.80	1,976.3	319.9	144.7	351.1	1.04	-0.32	4.09	
2,112.0	13.60	21.80	2,066.7	339.7	154.4	373.1	2.07	-0.32	-8.60	
2,205.0	13.20	26.60	2,157.1	359.4	163.2	394.6	1.27	-0.43	5.16	
2,298.0	13.90	24.10	2,247.6	379.1	172.5	416.4	0.98	0.75	-2.69	
2,391.0	13.40	18.20	2,337.9	399.5	180.4	438.3	1.59	-0.54	-6.34	
2,484.0	15.30	21.20	2,428.0	421.2	188.2	461.3	2.19	2.04	3.23	
2,577.0	15.30	19.40	2,517.7	444.2	196.7	485.8	0.51	0.00	-1.94	
2,670.0	15.20	20.50	2,607.5	467.2	205.1	510.2	0.33	-0.11	1.18	
2,763.0	15.30	24.80	2,697.2	489.7	214.5	534.6	1.22	0.11	4.62	
2,856.0	14.90	22.20	2,787.0	511.9	224.2	558.9	0.85	-0.43	-2.80	
2,949.0	14.40	23.60	2,876.9	533.6	233.3	582.4	0.66	-0.54	1.51	
3,042.0	14.90	24.30	2,966.9	555.1	242.9	605.9	0.57	0.54	0.75	
3,135.0	14.30	22.80	3,056.9	576.6	252.2	629.3	0.76	-0.65	-1.61	
3,228.0	15.10	23.30	3,146.9	598.3	261.5	652.9	0.87	0.86	0.54	
3,320.0	15.40	24.10	3,235.6	620.5	271.2	677.1	0.40	0.33	0.87	
3,413.0	15.70	22.50	3,325.2	643.4	281.1	702.1	0.56	0.32	-1.72	
3,506.0	16.20	25.10	3,414.7	666.7	291.4	727.6	0.94	0.54	2.80	
3,599.0	15.30	22.20	3,504.2	689.8	301.5	752.9	1.29	-0.97	-3.12	
3,692.0	15.90	25.50	3,593.7	712.7	311.6	777.9	1.15	0.65	3.55	
3,785.0	16.70	24.10	3,683.0	736.4	322.6	803.9	0.96	0.86	-1.51	
3,878.0	16.70	24.80	3,772.1	760.7	333.6	830.7	0.22	0.00	0.75	
3,971.0	16.40	22.00	3,861.2	785.0	344.2	857.1	0.92	-0.32	-3.01	
4,064.0	16.80	23.10	3,950.3	809.6	354.3	883.7	0.55	0.43	1.18	
4,157.0	15.30	25.40	4,039.7	833.0	364.9	909.4	1.75	-1.61	2.47	
4,250.0	14.00	25.10	4,129.7	854.3	374.9	932.9	1.40	-1.40	-0.32	
4,343.0	13.90	24.60	4,220.0	874.6	384.3	955.3	0.17	-0.11	-0.54	
4,436.0	12.40	21.80	4,310.5	894.1	392.7	976.5	1.75	-1.61	-3.01	
4,529.0	12.30	23.10	4,401.4	912.4	400.3	996.4	0.32	-0.11	1.40	
4,622.0	10.70	22.70	4,492.5	929.5	407.5	1,014.9	1.72	-1.72	-0.43	
4,715.0	9.30	19.40	4,584.1	944.6	413.3	1,031.0	1.63	-1.51	-3.55	
4,808.0	7.60	21.50	4,676.1	957.4	418.1	1,044.7	1.86	-1.83	2.26	
4,901.0	7.10	15.80	4,768.3	968.6	421.9	1,056.5	0.95	-0.54	-6.13	
4,993.0	6.10	17.80	4,859.7	978.8	425.0	1,067.0	1.12	-1.09	2.17	
5,085.0	4.20	11.10	4,951.3	986.7	427.1	1,075.2	2.16	-2.07	-7.28	
5,179.0	2.90	12.10	5,045.1	992.4	428.3	1,080.9	1.38	-1.38	1.06	
5,272.0	2.60	9.30	5,138.0	996.8	429.1	1,085.2	0.35	-0.32	-3.01	
5,333.6	2.09	354.85	5,199.5	999.3	429.2	1,087.6	1.26	-0.83	-23.48	
DRILL TARGET BHL 75'FNL & 1300'FEL										
5,334.5	2.08	354.56	5,200.5	999.3	429.2	1,087.6	1.26	-0.69	-29.00	
PERMIT TARGET BHL 50'FNL & 1300'FEL										
5,365.0	1.90	344.80	5,231.0	1,000.4	429.0	1,088.5	1.26	-0.60	-32.05	
5,458.0	1.50	356.40	5,323.9	1,003.1	428.5	1,090.8	0.57	-0.43	12.47	
5,551.0	1.00	355.40	5,416.9	1,005.1	428.4	1,092.6	0.54	-0.54	-1.08	

Company:	EnCana Oil & Gas Weld County CO	Local Co-ordinate Reference:	Well File 6-0-17
Project:	SEC.17-T2N-R68W	TVD Reference:	WELL @ 4896.0ft (Original Well Elev)
Site:	File 31-17 Pad Sec.17-T2N-R68W	MD Reference:	WELL @ 4896.0ft (Original Well Elev)
Well:	File 6-0-17	North Reference:	True
Wellbore:	Wellbore #1	Survey Calculation Method:	Minimum Curvature
Design:	Wellbore #1	Database:	Landmark

Survey									
Measured Depth (ft)	Inclination (°)	Azimuth (°)	Vertical Depth (ft)	+N/-S (ft)	+E/-W (ft)	Vertical Section (ft)	Dogleg Rate (°/100ft)	Build Rate (°/100ft)	Turn Rate (°/100ft)
5,644.0	0.90	322.90	5,509.9	1,006.5	427.9	1,093.6	0.58	-0.11	-34.95
5,737.0	0.60	4.80	5,602.9	1,007.6	427.5	1,094.4	0.65	-0.32	45.05
6,016.0	0.40	102.00	5,881.9	1,008.8	428.6	1,096.0	0.27	-0.07	34.84
6,295.0	0.20	54.30	6,160.9	1,008.9	429.9	1,096.6	0.11	-0.07	-17.10
6,573.0	0.70	105.40	6,438.9	1,008.7	432.0	1,097.3	0.21	0.18	18.38
6,852.0	0.90	117.60	6,717.8	1,007.3	435.5	1,097.4	0.09	0.07	4.37
7,131.0	0.70	236.20	6,996.8	1,005.3	436.1	1,095.8	0.49	-0.07	42.51
7,285.7	2.23	215.29	7,151.5	1,002.3	433.5	1,092.1	1.03	0.99	-13.51
TARGET CIRCLE 75'FNL & 1300'FEL									
7,410.0	3.50	212.00	7,275.6	997.1	430.1	1,085.9	1.03	1.02	-2.65
7,689.0	2.10	167.00	7,554.3	984.9	426.8	1,073.4	0.90	-0.50	-16.13
7,968.0	0.70	164.20	7,833.2	978.3	428.4	1,068.0	0.50	-0.50	-1.00
8,116.0	1.00	246.60	7,981.2	976.9	427.4	1,066.3	0.77	0.20	55.68
8,144.6	0.82	246.50	8,009.8	976.7	427.0	1,066.0	0.61	-0.61	-0.35
HARDLINE 75'N OF DRILL TARGET BHL									
8,165.0	0.70	246.40	8,030.2	976.6	426.8	1,065.8	0.61	-0.61	-0.49

Checked By: _____	Approved By: _____	Date: _____
-------------------	--------------------	-------------