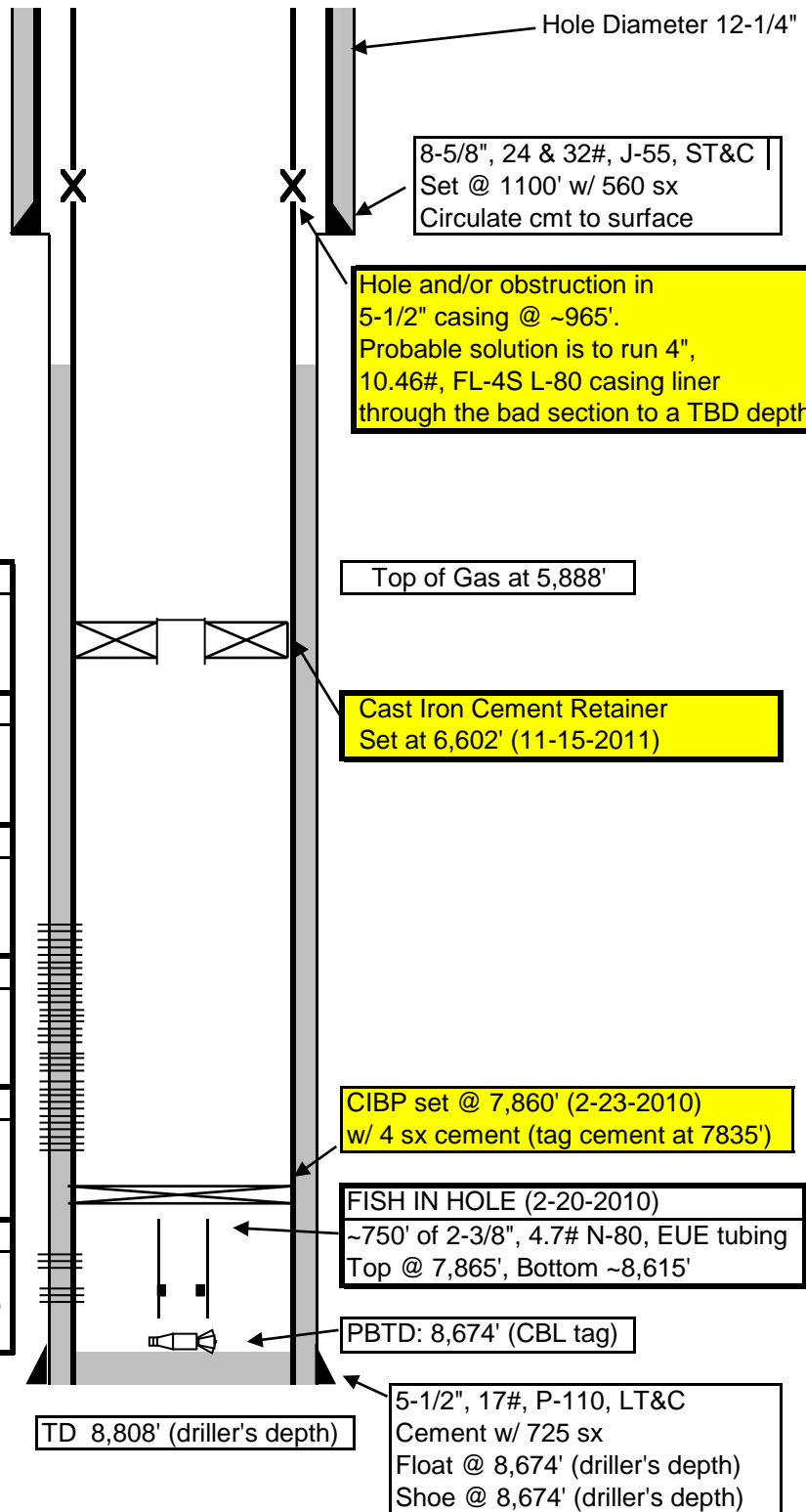


Wellbore Diagram

(Current 1/4/12)

Elev. GL: 5,644'
KB: 5,669'

Spud: 2/16/2008
TD: 3/26/2008
Completion: 6/20/2008



Top of Cement at 2,870'

Hole Diameter 12-1/4"

8-5/8", 24 & 32#, J-55, ST&C |
Set @ 1100' w/ 560 sx
Circulate cmt to surface

Hole and/or obstruction in
5-1/2" casing @ ~965'.
Probable solution is to run 4",
10.46#, FL-4S L-80 casing liner
through the bad section to a TBD depth

Top of Gas at 5,888'

Cast Iron Cement Retainer
Set at 6,602' (11-15-2011)

CIBP set @ 7,860' (2-23-2010)
w/ 4 sx cement (tag cement at 7835')

FISH IN HOLE (2-20-2010)
~750' of 2-3/8", 4.7# N-80, EUE tubing
Top @ 7,865', Bottom ~8,615'

PBTD: 8,674' (CBL tag)

5-1/2", 17#, P-110, LT&C
Cement w/ 725 sx
Float @ 8,674' (driller's depth)
Shoe @ 8,674' (driller's depth)

TD 8,808' (driller's depth)

<p>Cameo/WF perforations (6/14/08): 6672-73', 6783-84', 6805-06', 6820-22', 6840-42', 6878-80' 6904-06', 6938-40' (39 holes, 3 spf, 120 degree ph) Frac'd w/ 9,602 bw & 208K lbs 30/50 sand @ 80.4 bpm</p>
<p>Cameo perforations (6/13/08): 7003-05', 7019-20', 7036-37', 7052-54', 7061-62', 7099-7101' 7138-40', 7156-58' (39 holes, 3 spf, 120 degree ph) Frac'd w/ 4,711 bw & 76K lbs 30/50 sand @ 79.5 bpm</p>
<p>Cameo perforations (6/13/08): 7186-88', 7234-35', 7248-50', 7284-85', 7298-00', 7346-47', 7366-68', 7380-82' (39 holes, 3 spf, 120 degree ph) Frac'd w/ 10,822 bw & 240K lbs 30/50 sand @ 80.4 bpm</p>
<p>Cameo perforations (6/10/08): 7446-48', 7504-05', 7518-20', 7529-31', 7556-58', 7621-22' 7626-28', 7643-45' (42 holes, 3 spf, 120 degree ph) Frac'd w/ 6,642 bw & 139K lbs 30/50 sand @ 80.8 bpm</p>
<p>Cozzette perforations (6/10/08): 8230-31', 8246-48', 8274-75', 8318-20', 8342-44', 8404-06' (30 holes, 3 spf, 120 degree ph) Frac'd w/ 9,519 bw & 208K lbs 30/50 sand @ 80.9 bpm</p>
<p>Corcoran perforations (6/7/08): 8486-87', 8499-00', 8510-11', 8553-55', 8580-81', 8599-00', 8619-21', 8638-40', 8650-52', 8669-71' (45 holes, 3 spf, 120 degree ph) Frac'd w/ 16,092 bw & 351K lbs 30/50 sand @ 80.7 bpm</p>

Antero Resources Corporation
Robinson C5
API # 05-045-14666