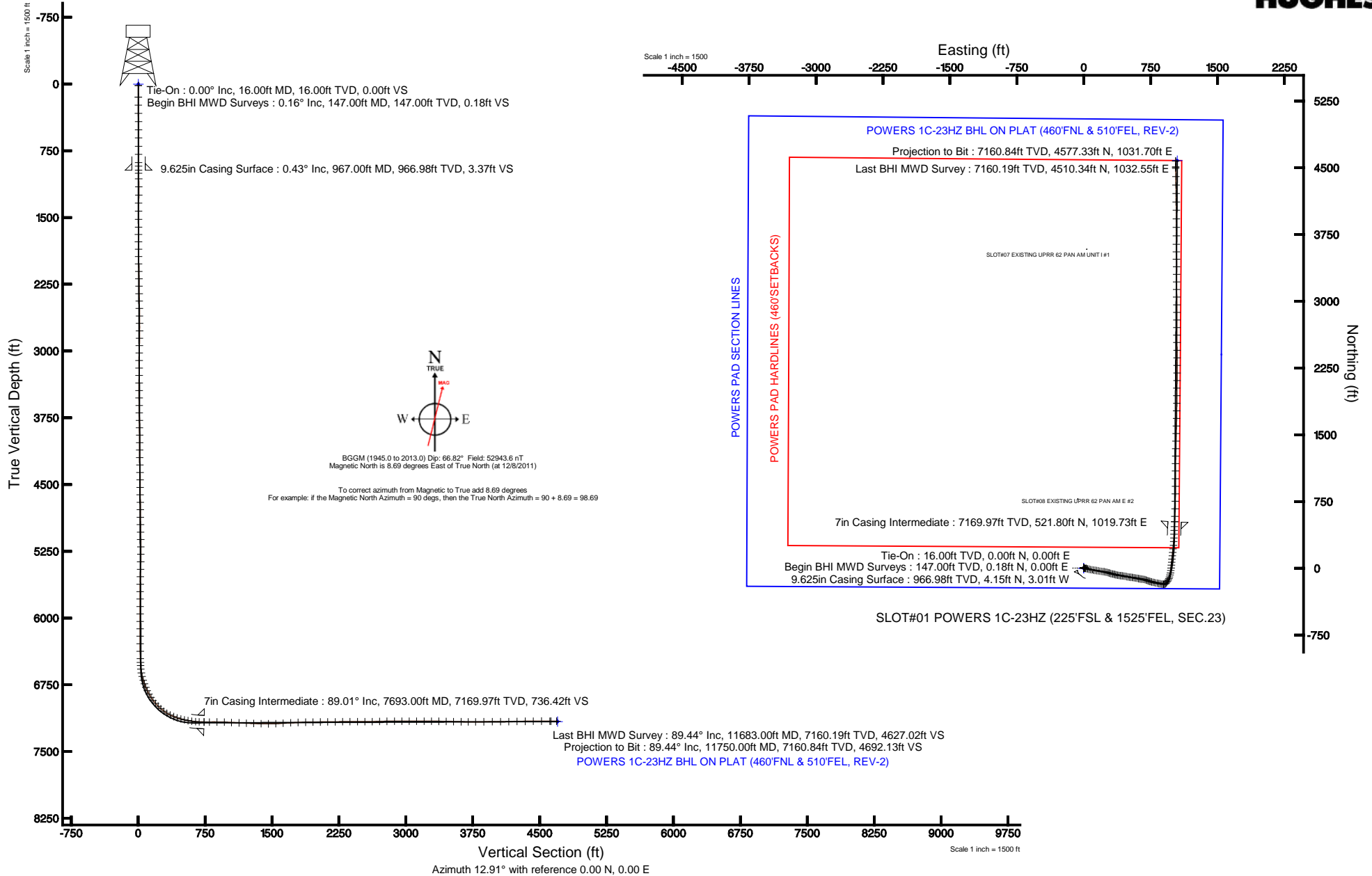


ANADARKO E&P COMPANY LP

Location: COLORADO Slot: SLOT#01 POWERS 1C-23HZ (225'FSL & 1525'FEL, SEC.23)
 Field: WELD COUNTY (KERR MCGEE) Well: POWERS 1C-23HZ
 Facility: SEC.23-T2N-R65W Wellbore: POWERS 1C-23HZ PWB

Plot reference wellpath is POWERS 1C-23HZ (REV-B.0) PWP	Grid System: NAD83 / Lambert Colorado SP, Northern Zone (501), US feet
True vertical depths are referenced to XTREME 6 (RKB)	North Reference: True north
Measured depths are referenced to XTREME 6 (RKB)	Scale: True distance
XTREME 6 (RKB) to Mean Sea Level: 4924 feet	Depths are in feet
Mean Sea Level to Mud line (At Slot: SLOT#01 POWERS 1C-23HZ (225'FSL & 1525'FEL, SEC.23)): 0 feet	Coordinates are in feet referenced to Slot
Created by: wilsjef02 on 1/31/2012	





Actual Wellpath Report

POWERS 1C-23HZ AWP

Page 1 of 6



REFERENCE WELLPATH IDENTIFICATION

Operator	ANADARKO E&P COMPANY LP	Slot	SLOT#01 POWERS 1C-23HZ (225'FSL & 1525'FEL, SEC.23)
Area	COLORADO	Well	POWERS 1C-23HZ
Field	WELD COUNTY (KERR MCGEE)	Wellbore	POWERS 1C-23HZ AWB
Facility	SEC.23-T2N-R65W		

REPORT SETUP INFORMATION

Projection System	NAD83 / Lambert Colorado SP, Northern Zone (501), US feet	Software System	WellArchitect® 3.0.2
North Reference	True	User	Wilsjef02
Scale	0.99996	Report Generated	1/31/2012 at 8:49:18 AM
Convergence at slot	0.56° East	Database/Source file	WA_ANADARKO/POWERS_1C-23HZ_AWB.xml

WELLPATH LOCATION

	Local coordinates		Grid coordinates		Geographic coordinates	
	North[ft]	East[ft]	Easting[US ft]	Northing[US ft]	Latitude	Longitude
Slot Location	-0.10	0.00	3244092.03	1286819.99	40°07'02.698"N	104°37'37.934"W
Facility Reference Pt			3244092.03	1286820.09	40°07'02.699"N	104°37'37.934"W
Field Reference Pt			3197771.84	1268891.29	40°04'09.600"N	104°47'36.000"W

WELLPATH DATUM

Calculation method	Minimum curvature	XTREME 6 (RKB) to Facility Vertical Datum	4924.00ft
Horizontal Reference Pt	Slot	XTREME 6 (RKB) to Mean Sea Level	4924.00ft
Vertical Reference Pt	XTREME 6 (RKB)	XTREME 6 (RKB) to Mud Line at Slot (SLOT#01 POWERS 1C-23HZ (225'FSL & 1525'FEL, SEC.23))	4924.00ft
MD Reference Pt	XTREME 6 (RKB)	Section Origin	N 0.00, E 0.00 ft
Field Vertical Reference	Mean Sea Level	Section Azimuth	12.91°



Actual Wellpath Report

POWERS 1C-23HZ AWP

Page 2 of 6



REFERENCE WELLPATH IDENTIFICATION			
Operator	ANADARKO E&P COMPANY LP	Slot	SLOT#01 POWERS 1C-23HZ (225'FSL & 1525'FEL, SEC.23)
Area	COLORADO	Well	POWERS 1C-23HZ
Field	WELD COUNTY (KERR MCGEE)	Wellbore	POWERS 1C-23HZ AWB
Facility	SEC.23-T2N-R65W		

WELLPATH DATA (153 stations) † = interpolated/extrapolated station										
MD [ft]	Inclination [°]	Azimuth [°]	TVD [ft]	Vert Sect [ft]	North [ft]	East [ft]	Latitude	Longitude	DLS [°/100ft]	Comments
0.00†	0.000	0.590	0.00	0.00	0.00	0.00	40°07'02.698"N	104°37'37.934"W	0.00	
16.00	0.000	0.590	16.00	0.00	0.00	0.00	40°07'02.698"N	104°37'37.934"W	0.00	Tie-On
147.00	0.160	0.590	147.00	0.18	0.18	0.00	40°07'02.700"N	104°37'37.934"W	0.12	Begin BHI MWD Surveys
237.00	0.380	346.830	237.00	0.57	0.60	-0.06	40°07'02.704"N	104°37'37.935"W	0.25	
329.00	0.410	13.110	329.00	1.17	1.22	-0.06	40°07'02.710"N	104°37'37.935"W	0.20	
421.00	0.570	341.560	420.99	1.89	1.97	-0.13	40°07'02.717"N	104°37'37.936"W	0.33	
513.00	0.640	299.000	512.99	2.43	2.65	-0.72	40°07'02.724"N	104°37'37.943"W	0.48	
605.00	0.300	352.290	604.99	2.79	3.14	-1.21	40°07'02.729"N	104°37'37.950"W	0.56	
698.00	0.550	295.470	697.98	3.12	3.58	-1.64	40°07'02.733"N	104°37'37.955"W	0.49	
790.00	0.410	267.180	789.98	3.13	3.75	-2.37	40°07'02.735"N	104°37'37.964"W	0.29	
882.00	0.180	20.990	881.98	3.18	3.87	-2.65	40°07'02.736"N	104°37'37.968"W	0.55	
922.00	0.380	294.930	921.98	3.27	3.98	-2.74	40°07'02.737"N	104°37'37.969"W	1.02	
1003.00	0.480	314.170	1002.98	3.50	4.33	-3.23	40°07'02.741"N	104°37'37.976"W	0.22	
1064.00	0.480	71.520	1063.98	3.77	4.59	-3.17	40°07'02.743"N	104°37'37.975"W	1.34	
1155.00	1.200	84.100	1154.97	4.27	4.81	-1.86	40°07'02.746"N	104°37'37.958"W	0.81	
1246.00	2.310	113.830	1245.92	4.23	4.17	0.76	40°07'02.739"N	104°37'37.924"W	1.54	
1337.00	4.060	111.900	1336.78	3.38	2.22	5.43	40°07'02.720"N	104°37'37.864"W	1.93	
1429.00	4.760	107.920	1428.51	2.54	-0.16	12.08	40°07'02.696"N	104°37'37.778"W	0.83	
1520.00	6.410	103.090	1519.07	2.19	-2.48	20.63	40°07'02.674"N	104°37'37.669"W	1.88	
1608.00	8.280	103.820	1606.35	2.08	-5.10	31.56	40°07'02.648"N	104°37'37.528"W	2.13	
1693.00	9.850	105.280	1690.28	1.68	-8.48	44.52	40°07'02.614"N	104°37'37.361"W	1.87	
1778.00	11.190	101.650	1773.85	1.56	-12.06	59.61	40°07'02.579"N	104°37'37.167"W	1.76	
1862.00	12.090	100.960	1856.12	2.04	-15.38	76.23	40°07'02.546"N	104°37'36.953"W	1.08	
1946.00	12.060	101.430	1938.27	2.56	-18.79	93.47	40°07'02.512"N	104°37'36.731"W	0.12	
2031.00	11.970	98.190	2021.40	3.52	-21.81	110.90	40°07'02.482"N	104°37'36.507"W	0.80	
2116.00	11.930	98.030	2104.56	4.99	-24.29	128.32	40°07'02.458"N	104°37'36.282"W	0.06	
2201.00	11.990	98.530	2187.72	6.41	-26.83	145.75	40°07'02.433"N	104°37'36.058"W	0.14	
2287.00	12.120	99.310	2271.82	7.66	-29.61	163.50	40°07'02.405"N	104°37'35.830"W	0.24	
2372.00	11.980	99.350	2354.95	8.77	-32.49	181.01	40°07'02.377"N	104°37'35.604"W	0.16	
2457.00	11.570	98.240	2438.16	10.01	-35.15	198.15	40°07'02.351"N	104°37'35.384"W	0.55	
2542.00	10.750	97.460	2521.55	11.45	-37.40	214.44	40°07'02.328"N	104°37'35.174"W	0.98	
2627.00	10.460	99.260	2605.10	12.70	-39.67	229.92	40°07'02.306"N	104°37'34.975"W	0.52	
2712.00	10.950	99.500	2688.62	13.67	-42.24	245.50	40°07'02.281"N	104°37'34.774"W	0.58	
2798.00	9.900	107.200	2773.20	13.60	-45.78	260.62	40°07'02.246"N	104°37'34.579"W	2.03	
2882.00	9.760	107.290	2855.97	12.52	-50.03	274.31	40°07'02.204"N	104°37'34.403"W	0.17	
2967.00	9.480	109.880	2939.77	11.12	-54.55	287.78	40°07'02.159"N	104°37'34.230"W	0.61	
3051.00	9.530	109.690	3022.62	9.46	-59.24	300.83	40°07'02.113"N	104°37'34.062"W	0.07	
3137.00	9.240	102.610	3107.47	8.65	-63.15	314.27	40°07'02.074"N	104°37'33.889"W	1.38	
3222.00	8.610	101.160	3191.44	8.88	-65.87	327.17	40°07'02.047"N	104°37'33.723"W	0.79	
3307.00	8.640	103.900	3275.48	8.97	-68.64	339.61	40°07'02.020"N	104°37'33.563"W	0.48	
3392.00	9.000	103.390	3359.48	8.80	-71.71	352.28	40°07'01.989"N	104°37'33.400"W	0.43	
3477.00	9.190	103.420	3443.41	8.68	-74.83	365.35	40°07'01.959"N	104°37'33.231"W	0.22	
3563.00	9.650	101.560	3528.25	8.79	-77.86	379.09	40°07'01.929"N	104°37'33.054"W	0.64	
3648.00	10.300	99.120	3611.96	9.46	-80.50	393.57	40°07'01.902"N	104°37'32.868"W	0.91	
3733.00	9.140	96.920	3695.74	10.67	-82.51	407.78	40°07'01.883"N	104°37'32.685"W	1.43	
3818.00	9.240	98.110	3779.65	11.94	-84.29	421.23	40°07'01.865"N	104°37'32.512"W	0.25	
3902.00	9.980	98.670	3862.47	13.05	-86.34	435.11	40°07'01.845"N	104°37'32.333"W	0.89	
3987.00	10.560	98.270	3946.11	14.22	-88.57	450.10	40°07'01.823"N	104°37'32.141"W	0.69	
4072.00	10.640	101.340	4029.66	15.06	-91.23	465.50	40°07'01.796"N	104°37'31.942"W	0.67	
4157.00	11.350	103.080	4113.10	15.25	-94.67	481.34	40°07'01.762"N	104°37'31.738"W	0.92	
4242.00	10.680	99.980	4196.53	15.63	-97.93	497.24	40°07'01.730"N	104°37'31.534"W	1.05	
4328.00	10.100	96.880	4281.12	16.83	-100.21	512.58	40°07'01.708"N	104°37'31.336"W	0.94	
4413.00	10.150	94.830	4364.80	18.67	-101.73	527.44	40°07'01.693"N	104°37'31.145"W	0.43	
4498.00	9.740	100.570	4448.53	20.01	-103.68	541.97	40°07'01.673"N	104°37'30.958"W	1.26	
4583.00	9.600	101.110	4532.32	20.53	-106.37	556.00	40°07'01.647"N	104°37'30.777"W	0.20	
4668.00	9.560	101.000	4616.13	20.99	-109.08	569.88	40°07'01.620"N	104°37'30.599"W	0.05	
4754.00	10.200	99.040	4700.86	21.74	-111.64	584.41	40°07'01.595"N	104°37'30.412"W	0.84	
4838.00	10.170	99.360	4783.53	22.70	-114.02	599.07	40°07'01.571"N	104°37'30.223"W	0.08	
4924.00	10.100	101.250	4868.19	23.39	-116.72	613.96	40°07'01.544"N	104°37'30.031"W	0.40	
5009.00	9.970	100.090	4951.89	23.96	-119.46	628.51	40°07'01.517"N	104°37'29.844"W	0.28	



Actual Wellpath Report

POWERS 1C-23HZ AWP

Page 3 of 6



REFERENCE WELLPATH IDENTIFICATION			
Operator	ANADARKO E&P COMPANY LP	Slot	SLOT#01 POWERS 1C-23HZ (225'FSL & 1525'FEL, SEC.23)
Area	COLORADO	Well	POWERS 1C-23HZ
Field	WELD COUNTY (KERR MCGEE)	Wellbore	POWERS 1C-23HZ AWB
Facility	SEC.23-T2N-R65W		

WELLPATH DATA (153 stations) † = interpolated/extrapolated station										
MD [ft]	Inclination [°]	Azimuth [°]	TVD [ft]	Vert Sect [ft]	North [ft]	East [ft]	Latitude	Longitude	DLS [°/100ft]	Comments
5094.00	9.990	97.690	5035.61	25.00	-121.74	643.06	40°07'01.495"N	104°37'29.657"W	0.49	
5179.00	10.720	95.480	5119.22	26.69	-123.48	658.24	40°07'01.478"N	104°37'29.461"W	0.98	
5262.00	10.210	98.990	5200.84	28.19	-125.37	673.19	40°07'01.459"N	104°37'29.269"W	0.98	
5347.00	9.060	107.980	5284.64	28.11	-128.61	687.00	40°07'01.427"N	104°37'29.091"W	2.22	
5432.00	8.910	110.290	5368.60	26.68	-132.96	699.54	40°07'01.384"N	104°37'28.930"W	0.46	
5518.00	8.610	113.160	5453.60	24.67	-137.80	711.70	40°07'01.336"N	104°37'28.773"W	0.62	
5603.00	8.700	109.780	5537.63	22.77	-142.48	723.60	40°07'01.290"N	104°37'28.620"W	0.61	
5688.00	9.250	109.260	5621.59	21.25	-146.91	736.10	40°07'01.246"N	104°37'28.459"W	0.65	
5773.00	9.390	105.540	5705.47	20.17	-151.02	749.23	40°07'01.205"N	104°37'28.290"W	0.73	
5856.00	9.810	102.410	5787.31	19.92	-154.35	762.66	40°07'01.173"N	104°37'28.117"W	0.81	
5942.00	10.140	103.120	5872.01	19.96	-157.65	777.19	40°07'01.140"N	104°37'27.930"W	0.41	
6027.00	11.100	103.150	5955.55	19.90	-161.21	792.44	40°07'01.105"N	104°37'27.734"W	1.13	
6112.00	11.000	104.620	6038.97	19.62	-165.11	808.26	40°07'01.066"N	104°37'27.530"W	0.35	
6197.00	10.670	103.540	6122.46	19.29	-169.00	823.75	40°07'01.028"N	104°37'27.331"W	0.46	
6282.00	10.620	98.590	6206.00	19.80	-172.02	839.15	40°07'00.998"N	104°37'27.133"W	1.08	
6367.00	10.650	102.370	6289.54	20.46	-174.87	854.57	40°07'00.970"N	104°37'26.934"W	0.82	
6453.00	10.250	98.660	6374.11	21.10	-177.72	869.89	40°07'00.942"N	104°37'26.737"W	0.91	
6538.00	11.050	94.250	6457.65	22.89	-179.47	885.49	40°07'00.924"N	104°37'26.536"W	1.34	
6581.00	10.890	94.150	6499.86	24.13	-180.06	893.65	40°07'00.918"N	104°37'26.431"W	0.37	
6616.00	10.680	92.090	6534.25	25.24	-180.42	900.19	40°07'00.915"N	104°37'26.347"W	1.25	
6659.00	10.940	72.590	6576.50	28.05	-179.35	908.07	40°07'00.926"N	104°37'26.246"W	8.49	
6702.00	13.720	54.950	6618.52	33.90	-175.19	916.14	40°07'00.967"N	104°37'26.142"W	10.82	
6744.00	17.380	42.620	6658.98	43.05	-167.71	924.47	40°07'01.040"N	104°37'26.035"W	11.70	
6787.00	18.450	36.630	6699.90	54.86	-157.53	932.88	40°07'01.141"N	104°37'25.926"W	4.95	
6830.00	21.550	28.650	6740.31	68.70	-145.13	940.73	40°07'01.264"N	104°37'25.825"W	9.59	
6872.00	22.240	29.080	6779.28	83.75	-131.41	948.29	40°07'01.399"N	104°37'25.728"W	1.69	
6915.00	25.390	23.440	6818.62	100.64	-115.84	955.92	40°07'01.553"N	104°37'25.630"W	9.03	
6957.00	28.920	18.150	6855.99	119.61	-97.92	962.67	40°07'01.730"N	104°37'25.543"W	10.18	
7000.00	32.960	13.010	6892.87	141.68	-76.63	968.54	40°07'01.941"N	104°37'25.467"W	11.22	
7042.00	36.440	10.150	6927.40	165.57	-53.21	973.31	40°07'02.172"N	104°37'25.406"W	9.15	
7085.00	41.130	7.490	6960.91	192.42	-26.60	977.41	40°07'02.435"N	104°37'25.353"W	11.57	
7128.00	45.120	5.080	6992.29	221.61	2.61	980.61	40°07'02.724"N	104°37'25.312"W	10.04	
7170.00	50.040	5.040	7020.61	252.31	33.48	983.34	40°07'03.029"N	104°37'25.277"W	11.71	
7213.00	52.940	5.870	7047.38	285.67	66.97	986.54	40°07'03.360"N	104°37'25.235"W	6.91	
7255.00	58.750	6.440	7070.95	320.17	101.51	990.27	40°07'03.701"N	104°37'25.187"W	13.88	
7298.00	63.440	5.860	7091.73	357.54	138.93	994.30	40°07'04.071"N	104°37'25.136"W	10.97	
7341.00	67.480	6.480	7109.59	396.38	177.81	998.51	40°07'04.455"N	104°37'25.081"W	9.49	
7383.00	71.960	5.980	7124.14	435.50	216.96	1002.78	40°07'04.842"N	104°37'25.026"W	10.72	
7426.00	75.040	5.790	7136.35	476.41	257.97	1007.00	40°07'05.247"N	104°37'24.972"W	7.18	
7469.00	77.750	3.530	7146.47	517.77	299.62	1010.39	40°07'05.659"N	104°37'24.928"W	8.11	
7511.00	80.460	1.890	7154.41	558.35	340.81	1012.34	40°07'06.066"N	104°37'24.903"W	7.51	
7554.00	83.170	1.100	7160.53	600.07	383.35	1013.45	40°07'06.486"N	104°37'24.889"W	6.56	
7597.00	84.290	2.700	7165.22	642.02	426.07	1014.87	40°07'06.908"N	104°37'24.871"W	4.52	
7639.00	87.380	3.030	7168.27	683.27	467.90	1016.96	40°07'07.322"N	104°37'24.844"W	7.40	
7693.00†	89.014	2.853	7169.97	736.42	521.80	1019.73	40°07'07.854"N	104°37'24.808"W	3.04	7" Casing Point
7755.00	90.890	2.650	7170.02	797.45	583.73	1022.71	40°07'08.466"N	104°37'24.770"W	3.04	
7840.00	89.500	1.990	7169.74	881.00	668.66	1026.15	40°07'09.306"N	104°37'24.725"W	1.81	
7924.00	88.150	0.240	7171.46	963.20	752.62	1027.78	40°07'10.135"N	104°37'24.704"W	2.63	
8007.00	86.560	0.690	7175.29	1044.16	835.52	1028.46	40°07'10.955"N	104°37'24.696"W	1.99	
8093.00	87.720	0.040	7179.58	1128.00	921.41	1029.00	40°07'11.803"N	104°37'24.688"W	1.55	
8178.00	87.690	0.100	7182.98	1210.81	1006.35	1029.11	40°07'12.643"N	104°37'24.687"W	0.08	
8264.00	87.790	359.900	7186.37	1294.57	1092.28	1029.11	40°07'13.492"N	104°37'24.687"W	0.26	
8347.00	88.670	1.270	7188.94	1375.62	1175.23	1029.95	40°07'14.312"N	104°37'24.676"W	1.96	
8432.00	90.520	0.960	7189.54	1458.82	1260.21	1031.61	40°07'15.151"N	104°37'24.655"W	2.21	
8515.00	92.060	1.560	7187.67	1540.09	1343.17	1033.43	40°07'15.971"N	104°37'24.631"W	1.99	
8601.00	93.140	1.370	7183.77	1624.29	1429.05	1035.63	40°07'16.820"N	104°37'24.603"W	1.28	
8686.00	93.040	1.230	7179.19	1707.43	1513.90	1037.55	40°07'17.658"N	104°37'24.578"W	0.20	
8771.00	92.860	1.320	7174.81	1790.57	1598.77	1039.44	40°07'18.497"N	104°37'24.554"W	0.24	
8857.00	90.710	1.690	7172.13	1874.83	1684.69	1041.70	40°07'19.346"N	104°37'24.525"W	2.54	
8942.00	90.860	0.170	7170.97	1957.97	1769.67	1043.08	40°07'20.186"N	104°37'24.507"W	1.80	



Actual Wellpath Report

POWERS 1C-23HZ AWP

Page 4 of 6



REFERENCE WELLPATH IDENTIFICATION

Operator	ANADARKO E&P COMPANY LP	Slot	SLOT#01 POWERS 1C-23HZ (225'FSL & 1525'FEL, SEC.23)
Area	COLORADO	Well	POWERS 1C-23HZ
Field	WELD COUNTY (KERR MCGEE)	Wellbore	POWERS 1C-23HZ AWB
Facility	SEC.23-T2N-R65W		

WELLPATH DATA (153 stations)

MD [ft]	Inclination [°]	Azimuth [°]	TVD [ft]	Vert Sect [ft]	North [ft]	East [ft]	Latitude	Longitude	DLS [°/100ft]	Comments
9027.00	90.950	0.720	7169.63	2040.95	1854.66	1043.74	40°07'21.026"N	104°37'24.498"W	0.66	
9112.00	90.890	0.550	7168.26	2124.00	1939.64	1044.68	40°07'21.866"N	104°37'24.486"W	0.21	
9198.00	90.000	359.720	7167.59	2207.87	2025.64	1044.88	40°07'22.715"N	104°37'24.483"W	1.42	
9283.00	91.410	2.080	7166.55	2290.99	2110.61	1046.22	40°07'23.555"N	104°37'24.466"W	3.23	
9368.00	90.340	359.950	7165.25	2374.15	2195.58	1047.72	40°07'24.395"N	104°37'24.447"W	2.80	
9453.00	89.630	0.250	7165.27	2457.04	2280.58	1047.87	40°07'25.235"N	104°37'24.445"W	0.91	
9538.00	89.720	359.270	7165.75	2539.81	2365.58	1047.52	40°07'26.075"N	104°37'24.449"W	1.16	
9623.00	91.010	359.180	7165.21	2622.39	2450.57	1046.37	40°07'26.915"N	104°37'24.464"W	1.52	
9709.00	91.560	359.840	7163.28	2706.03	2536.54	1045.63	40°07'27.764"N	104°37'24.474"W	1.00	
9794.00	90.400	359.470	7161.83	2788.75	2621.52	1045.12	40°07'28.604"N	104°37'24.480"W	1.43	
9879.00	90.270	359.630	7161.33	2871.45	2706.52	1044.45	40°07'29.444"N	104°37'24.489"W	0.24	
9964.00	90.150	359.730	7161.02	2954.19	2791.52	1043.98	40°07'30.284"N	104°37'24.495"W	0.18	
10049.00	90.150	0.120	7160.80	3037.02	2876.52	1043.87	40°07'31.124"N	104°37'24.496"W	0.46	
10134.00	90.000	359.900	7160.69	3119.87	2961.52	1043.88	40°07'31.964"N	104°37'24.496"W	0.31	
10220.00	89.970	359.530	7160.71	3203.60	3047.52	1043.45	40°07'32.814"N	104°37'24.501"W	0.43	
10305.00	89.570	359.710	7161.05	3286.33	3132.51	1042.89	40°07'33.654"N	104°37'24.509"W	0.52	
10390.00	89.170	359.380	7161.99	3369.02	3217.51	1042.22	40°07'34.494"N	104°37'24.517"W	0.61	
10476.00	88.890	359.530	7163.44	3452.65	3303.49	1041.40	40°07'35.343"N	104°37'24.528"W	0.37	
10561.00	88.950	0.190	7165.04	3535.44	3388.47	1041.19	40°07'36.183"N	104°37'24.530"W	0.78	
10646.00	88.580	359.400	7166.88	3618.20	3473.45	1040.89	40°07'37.023"N	104°37'24.534"W	1.03	
10729.00	89.900	0.000	7167.98	3699.00	3556.44	1040.45	40°07'37.843"N	104°37'24.540"W	1.75	
10814.00	90.240	359.880	7167.87	3781.83	3641.44	1040.36	40°07'38.683"N	104°37'24.541"W	0.42	
10909.00	90.580	359.970	7167.19	3874.40	3736.44	1040.24	40°07'39.622"N	104°37'24.542"W	0.37	
11005.00	89.910	0.010	7166.78	3967.97	3832.44	1040.22	40°07'40.570"N	104°37'24.543"W	0.70	
11100.00	90.550	359.480	7166.40	4060.47	3927.44	1039.80	40°07'41.509"N	104°37'24.548"W	0.87	
11196.00	90.640	359.350	7165.41	4153.81	4023.43	1038.82	40°07'42.458"N	104°37'24.560"W	0.16	
11291.00	91.320	359.670	7163.78	4246.21	4118.41	1038.01	40°07'43.396"N	104°37'24.571"W	0.79	
11385.00	90.950	359.200	7161.92	4337.61	4212.38	1037.08	40°07'44.325"N	104°37'24.583"W	0.64	
11480.00	90.550	358.980	7160.68	4429.85	4307.36	1035.57	40°07'45.264"N	104°37'24.602"W	0.48	
11574.00	90.300	359.140	7159.98	4521.11	4401.35	1034.03	40°07'46.192"N	104°37'24.622"W	0.32	
11669.00	89.590	359.290	7160.07	4613.41	4496.34	1032.73	40°07'47.131"N	104°37'24.639"W	0.76	
11683.00	89.440	359.270	7160.19	4627.02	4510.34	1032.55	40°07'47.269"N	104°37'24.641"W	1.08	Last BHI MWD Survey
11750.00	89.440	359.270	7160.84	4692.13	4577.33	1031.70	40°07'47.931"N	104°37'24.652"W	0.00	Projection to Bit

HOLE & CASING SECTIONS - Ref Wellbore: POWERS 1C-23HZ AWB Ref Wellpath: POWERS 1C-23HZ AWP

String/Diameter	Start MD [ft]	End MD [ft]	Interval [ft]	Start TVD [ft]	End TVD [ft]	Start N/S [ft]	Start E/W [ft]	End N/S [ft]	End E/W [ft]
13.5in Open Hole	16.00	967.00	951.00	16.00	966.98	0.00	0.00	4.15	-3.01
9.625in Casing Surface	16.00	967.00	951.00	16.00	966.98	0.00	0.00	4.15	-3.01
8.75in Open Hole	967.00	7698.00	6731.00	966.98	7170.05	4.15	-3.01	526.80	1019.98
7in Casing Intermediate	16.00	7693.00	7677.00	16.00	7169.97	0.00	0.00	521.80	1019.73
6.125in Open Hole	7693.00	11750.00	4057.00	7169.97	7160.84	521.80	1019.73	4577.33	1031.70



Actual Wellpath Report

POWERS 1C-23HZ AWP

Page 5 of 6



REFERENCE WELLPATH IDENTIFICATION

Operator	ANADARKO E&P COMPANY LP	Slot	SLOT#01 POWERS 1C-23HZ (225'FSL & 1525'FEL, SEC.23)
Area	COLORADO	Well	POWERS 1C-23HZ
Field	WELD COUNTY (KERR MCGEE)	Wellbore	POWERS 1C-23HZ AWB
Facility	SEC.23-T2N-R65W		

TARGETS

Name	MD [ft]	TVD [ft]	North [ft]	East [ft]	Grid East [US ft]	Grid North [US ft]	Latitude	Longitude	Shape
POWERS PAD SECTION LINES		0.00	0.00	0.00	3244092.03	1286819.99	40°07'02.698"N	104°37'37.934"W	polygon
POWERS 1C-23HZ BHL ON PLAT (460'FNL & 510'FEL, REV-2)		7165.00	4582.44	1050.25	3245097.09	1291412.36	40°07'47.982"N	104°37'24.413"W	point
POWERS PAD HARDLINES (460'SETBACKS)		7172.00	0.00	0.00	3244092.03	1286819.99	40°07'02.698"N	104°37'37.934"W	polygon

WELLPATH COMPOSITION - Ref Wellbore: POWERS 1C-23HZ AWB Ref Wellpath: POWERS 1C-23HZ AWP

Start MD [ft]	End MD [ft]	Positional Uncertainty Model	Log Name/Comment	Wellbore
16.00	922.00	NaviTrak (Standard)	BHI MWD SURVEYS 13 1/2" HOLE <147-922>	POWERS 1C-23HZ AWB
922.00	7639.00	NaviTrak (Standard)	BHI MWD SURVEYS 8 3/4" HOLE <1003-7639>	POWERS 1C-23HZ AWB
7639.00	11683.00	NaviTrak (Standard)	BHI MWD SURVEYS 6 1/8" HOLE <7755-11683>	POWERS 1C-23HZ AWB
11683.00	11750.00	Blind Drilling (std)	Projection to bit	POWERS 1C-23HZ AWB



Actual Wellpath Report

POWERS 1C-23HZ AWP

Page 6 of 6



REFERENCE WELLPATH IDENTIFICATION

Operator	ANADARKO E&P COMPANY LP	Slot	SLOT#01 POWERS 1C-23HZ (225'FSL & 1525'FEL, SEC.23)
Area	COLORADO	Well	POWERS 1C-23HZ
Field	WELD COUNTY (KERR MCGEE)	Wellbore	POWERS 1C-23HZ AWB
Facility	SEC.23-T2N-R65W		

WELLPATH COMMENTS

MD [ft]	Inclination [°]	Azimuth [°]	TVD [ft]	Comment
16.00	0.000	0.590	16.00	Tie-On
147.00	0.160	0.590	147.00	Begin BHI MWD Surveys
7693.00	89.014	2.853	7169.97	7" Casing Point
11683.00	89.440	359.270	7160.19	Last BHI MWD Survey
11750.00	89.440	359.270	7160.84	Projection to Bit