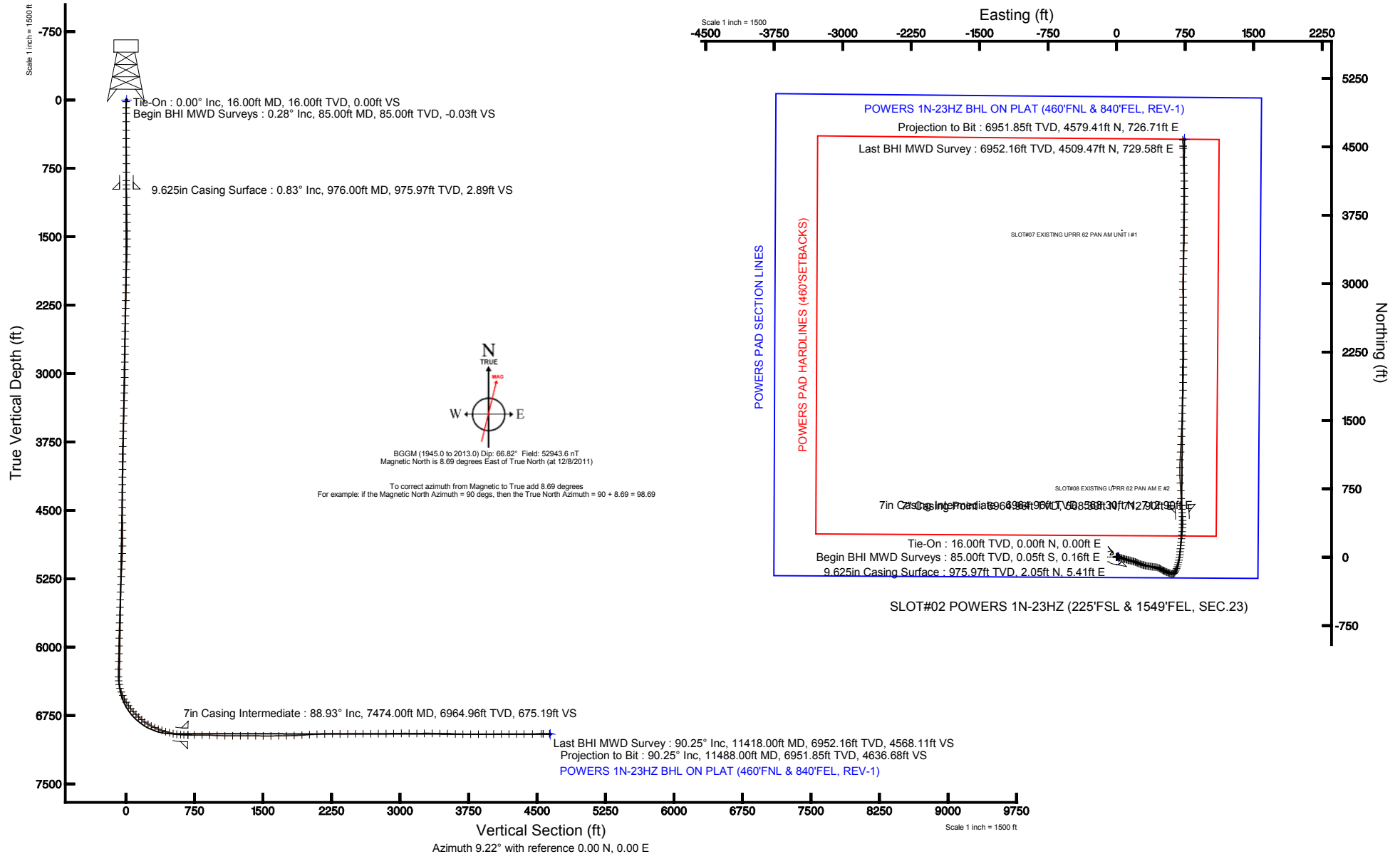


ANADARKO E&P COMPANY LP

Location: COLORADO Slot: SLOT#02 POWERS 1N-23HZ (225'FSL & 1549'FEL, SEC.23)
 Field: WELD COUNTY (KERR MCGEE) Well: POWERS 1N-23HZ
 Facility: SEC.23-T2N-R65W Wellbore: POWERS 1N-23HZ PWB



Plot reference wellpath is POWERS 1N-23HZ (REV-B.0) PWP	
True vertical depths are referenced to XTREME 6 (RKB)	Grid System: NAD83 / Lambert Colorado SP, Northern Zone (501), US feet
Measured depths are referenced to XTREME 6 (RKB)	North Reference: True north
XTREME 6 (RKB) to Mean Sea Level: 4924 feet	Scale: True distance
Mean Sea Level to Mud line (At Slot: SLOT#02 POWERS 1N-23HZ (225'FSL & 1549'FEL, SEC.23)): 0 feet	Depths are in feet
Coordinates are in feet referenced to Slot	Created by: wilsjef02 on 1/31/2012





Actual Wellpath Report

POWERS 1N-23HZ AWP

Page 1 of 6



REFERENCE WELLPATH IDENTIFICATION

Operator	ANADARKO E&P COMPANY LP	Slot	SLOT#02 POWERS 1N-23HZ (225'FSL & 1549'FEL, SEC.23)
Area	COLORADO	Well	POWERS 1N-23HZ
Field	WELD COUNTY (KERR MCGEE)	Wellbore	POWERS 1N-23HZ AWB
Facility	SEC.23-T2N-R65W		

REPORT SETUP INFORMATION

Projection System	NAD83 / Lambert Colorado SP, Northern Zone (501), US feet	Software System	WellArchitect® 3.0.2
North Reference	True	User	Wilsjef02
Scale	0.99996	Report Generated	1/31/2012 at 9:23:43 AM
Convergence at slot	0.56° East	Database/Source file	WA_ANADARKO/POWERS_1N-23HZ_AWB.xml

WELLPATH LOCATION

	Local coordinates		Grid coordinates		Geographic coordinates	
	North[ft]	East[ft]	Easting[US ft]	Northing[US ft]	Latitude	Longitude
Slot Location	0.20	-24.08	3244067.95	1286820.06	40°07'02.701"N	104°37'38.244"W
Facility Reference Pt			3244092.03	1286820.09	40°07'02.699"N	104°37'37.934"W
Field Reference Pt			3197771.84	1268891.29	40°04'09.600"N	104°47'36.000"W

WELLPATH DATUM

Calculation method	Minimum curvature	XTREME 6 (RKB) to Facility Vertical Datum	4924.00ft
Horizontal Reference Pt	Slot	XTREME 6 (RKB) to Mean Sea Level	4924.00ft
Vertical Reference Pt	XTREME 6 (RKB)	XTREME 6 (RKB) to Mud Line at Slot (SLOT#02 POWERS 1N-23HZ (225'FSL & 1549'FEL, SEC.23))	4924.00ft
MD Reference Pt	XTREME 6 (RKB)	Section Origin	N 0.00, E 0.00 ft
Field Vertical Reference	Mean Sea Level	Section Azimuth	9.22°



Actual Wellpath Report

POWERS 1N-23HZ AWP

Page 2 of 6



REFERENCE WELLPATH IDENTIFICATION									
Operator	ANADARKO E&P COMPANY LP					Slot	SLOT#02 POWERS 1N-23HZ (225'FSL & 1549'FEL, SEC.23)		
Area	COLORADO					Well	POWERS 1N-23HZ		
Field	WELD COUNTY (KERR MCGEE)					Wellbore	POWERS 1N-23HZ AWB		
Facility	SEC.23-T2N-R65W								

WELLPATH DATA (150 stations) † = interpolated/extrapolated station										
MD [ft]	Inclination [°]	Azimuth [°]	TVD [ft]	Vert Sect [ft]	North [ft]	East [ft]	Latitude	Longitude	DLS [°/100ft]	Comments
0.00†	0.000	108.990	0.00	0.00	0.00	0.00	40°07'02.701"N	104°37'38.244"W	0.00	
16.00	0.000	108.990	16.00	0.00	0.00	0.00	40°07'02.701"N	104°37'38.244"W	0.00	Tie-On
85.00	0.280	108.990	85.00	-0.03	-0.05	0.16	40°07'02.700"N	104°37'38.242"W	0.41	Begin BHI MWD Surveys
147.00	0.210	119.970	147.00	-0.09	-0.16	0.40	40°07'02.699"N	104°37'38.239"W	0.14	
237.00	0.450	136.650	237.00	-0.37	-0.50	0.79	40°07'02.696"N	104°37'38.234"W	0.28	
329.00	0.090	124.560	329.00	-0.62	-0.80	1.09	40°07'02.693"N	104°37'38.230"W	0.39	
421.00	0.710	31.290	420.99	-0.12	-0.36	1.45	40°07'02.697"N	104°37'38.225"W	0.78	
514.00	0.500	73.440	513.99	0.59	0.25	2.14	40°07'02.703"N	104°37'38.216"W	0.51	
606.00	0.510	25.910	605.99	1.16	0.73	2.70	40°07'02.708"N	104°37'38.209"W	0.44	
698.00	0.250	98.990	697.98	1.55	1.07	3.08	40°07'02.712"N	104°37'38.204"W	0.54	
790.00	0.370	57.770	789.98	1.75	1.20	3.53	40°07'02.713"N	104°37'38.199"W	0.27	
882.00	0.630	73.880	881.98	2.16	1.50	4.27	40°07'02.716"N	104°37'38.189"W	0.32	
930.00	0.830	65.810	929.98	2.46	1.71	4.84	40°07'02.718"N	104°37'38.182"W	0.47	
1067.00	0.940	31.770	1066.96	4.05	3.07	6.33	40°07'02.731"N	104°37'38.162"W	0.39	
1158.00	0.800	34.680	1157.95	5.31	4.23	7.09	40°07'02.743"N	104°37'38.153"W	0.16	
1251.00	0.950	23.510	1250.94	6.64	5.47	7.76	40°07'02.755"N	104°37'38.144"W	0.24	
1343.00	0.980	31.820	1342.93	8.11	6.84	8.48	40°07'02.769"N	104°37'38.135"W	0.16	
1435.00	0.830	11.590	1434.91	9.50	8.16	9.03	40°07'02.782"N	104°37'38.128"W	0.38	
1523.00	0.520	146.020	1522.91	9.85	8.45	9.38	40°07'02.785"N	104°37'38.123"W	1.42	
1609.00	1.800	131.910	1608.89	8.83	7.23	10.61	40°07'02.772"N	104°37'38.107"W	1.51	
1694.00	3.090	124.800	1693.81	7.12	5.03	13.48	40°07'02.751"N	104°37'38.070"W	1.56	
1777.00	4.770	119.410	1776.62	4.97	2.06	18.33	40°07'02.721"N	104°37'38.008"W	2.07	
1862.00	6.540	120.860	1861.20	1.96	-2.16	25.56	40°07'02.680"N	104°37'37.915"W	2.09	
1947.00	7.200	106.760	1945.59	-0.52	-6.18	34.82	40°07'02.640"N	104°37'37.796"W	2.12	
2032.00	8.050	98.570	2029.84	-1.15	-8.60	45.80	40°07'02.616"N	104°37'37.654"W	1.62	
2117.00	8.310	108.360	2113.98	-2.06	-11.43	57.52	40°07'02.588"N	104°37'37.504"W	1.66	
2202.00	8.050	110.090	2198.12	-4.16	-15.41	68.94	40°07'02.549"N	104°37'37.357"W	0.42	
2288.00	7.860	107.860	2283.29	-6.18	-19.28	80.19	40°07'02.511"N	104°37'37.212"W	0.42	
2373.00	7.650	107.140	2367.51	-7.83	-22.73	91.13	40°07'02.476"N	104°37'37.071"W	0.27	
2458.00	7.330	109.460	2451.79	-9.57	-26.20	101.65	40°07'02.442"N	104°37'36.936"W	0.52	
2543.00	8.170	104.020	2536.01	-11.04	-29.47	112.62	40°07'02.410"N	104°37'36.794"W	1.31	
2629.00	7.760	104.650	2621.18	-12.10	-32.42	124.17	40°07'02.381"N	104°37'36.646"W	0.49	
2714.00	7.270	103.320	2705.45	-13.03	-35.11	134.95	40°07'02.354"N	104°37'36.507"W	0.61	
2799.00	8.440	102.870	2789.65	-13.81	-37.74	146.27	40°07'02.328"N	104°37'36.361"W	1.38	
2884.00	8.510	103.720	2873.73	-14.70	-40.62	158.46	40°07'02.300"N	104°37'36.204"W	0.17	
2969.00	8.660	102.560	2957.77	-15.57	-43.50	170.81	40°07'02.271"N	104°37'36.045"W	0.27	
3055.00	7.690	107.960	3042.90	-16.82	-46.68	182.61	40°07'02.240"N	104°37'35.894"W	1.44	
3140.00	7.600	108.400	3127.14	-18.58	-50.21	193.35	40°07'02.205"N	104°37'35.755"W	0.13	
3225.00	7.330	106.960	3211.42	-20.21	-53.57	203.87	40°07'02.172"N	104°37'35.620"W	0.39	
3310.00	7.370	114.020	3295.73	-22.33	-57.37	214.04	40°07'02.134"N	104°37'35.489"W	1.06	
3395.00	6.850	113.980	3380.07	-25.01	-61.65	223.65	40°07'02.092"N	104°37'35.365"W	0.61	
3480.00	7.600	114.990	3464.40	-27.83	-66.08	233.37	40°07'02.048"N	104°37'35.240"W	0.89	
3565.00	8.490	110.870	3548.56	-30.63	-70.69	244.33	40°07'02.002"N	104°37'35.099"W	1.25	
3650.00	9.060	111.070	3632.57	-33.27	-75.34	256.44	40°07'01.957"N	104°37'34.943"W	0.67	
3734.00	8.570	110.060	3715.57	-35.80	-79.86	268.49	40°07'01.912"N	104°37'34.788"W	0.61	
3819.00	8.720	108.400	3799.61	-38.02	-84.07	280.55	40°07'01.870"N	104°37'34.633"W	0.34	
3904.00	7.470	105.200	3883.76	-39.62	-87.55	292.00	40°07'01.836"N	104°37'34.485"W	1.56	
3990.00	7.820	101.700	3969.00	-40.46	-90.20	303.12	40°07'01.810"N	104°37'34.342"W	0.68	
4073.00	8.990	103.610	4051.10	-41.20	-92.87	314.96	40°07'01.783"N	104°37'34.190"W	1.45	
4158.00	9.340	101.520	4135.02	-41.99	-95.81	328.17	40°07'01.754"N	104°37'34.020"W	0.57	
4243.00	9.240	100.030	4218.90	-42.36	-98.38	341.65	40°07'01.729"N	104°37'33.846"W	0.31	
4327.00	8.430	98.930	4301.91	-42.42	-100.51	354.37	40°07'01.708"N	104°37'33.683"W	0.98	
4412.00	8.680	101.840	4385.96	-42.68	-102.79	366.80	40°07'01.685"N	104°37'33.523"W	0.59	
4497.00	8.780	99.570	4469.98	-43.02	-105.19	379.48	40°07'01.662"N	104°37'33.359"W	0.42	
4582.00	9.010	96.080	4553.95	-42.69	-106.97	392.49	40°07'01.644"N	104°37'33.192"W	0.69	
4668.00	9.210	92.670	4638.87	-41.54	-108.00	406.06	40°07'01.634"N	104°37'33.017"W	0.67	
4753.00	9.150	96.220	4722.78	-40.41	-109.05	419.58	40°07'01.623"N	104°37'32.843"W	0.67	
4838.00	8.470	101.410	4806.78	-40.29	-111.02	432.43	40°07'01.604"N	104°37'32.678"W	1.23	
4923.00	8.720	105.710	4890.83	-41.26	-114.01	444.77	40°07'01.574"N	104°37'32.519"W	0.81	
5008.00	9.330	109.590	4974.77	-43.23	-118.06	457.47	40°07'01.534"N	104°37'32.356"W	1.01	



Actual Wellpath Report

POWERS 1N-23HZ AWP

Page 3 of 6



REFERENCE WELLPATH IDENTIFICATION

Operator	ANADARKO E&P COMPANY LP	Slot	SLOT#02 POWERS 1N-23HZ (225'FSL & 1549'FEL, SEC.23)
Area	COLORADO	Well	POWERS 1N-23HZ
Field	WELD COUNTY (KERR MCGEE)	Wellbore	POWERS 1N-23HZ AWB
Facility	SEC.23-T2N-R65W		

WELLPATH DATA (150 stations) † = interpolated/extrapolated station

MD [ft]	Inclination [°]	Azimuth [°]	TVD [ft]	Vert Sect [ft]	North [ft]	East [ft]	Latitude	Longitude	DLS [°/100ft]	Comments
5094.00	7.570	115.340	5059.84	-46.06	-122.82	469.15	40°07'01.487"N	104°37'32.205"W	2.27	
5179.00	8.210	120.510	5144.03	-49.81	-128.30	479.44	40°07'01.433"N	104°37'32.073"W	1.12	
5264.00	8.280	120.420	5228.16	-54.23	-134.48	489.95	40°07'01.372"N	104°37'31.938"W	0.08	
5349.00	6.900	124.090	5312.41	-58.59	-140.44	499.46	40°07'01.313"N	104°37'31.815"W	1.72	
5435.00	6.950	115.280	5397.78	-62.20	-145.56	508.44	40°07'01.263"N	104°37'31.700"W	1.24	
5520.00	6.980	114.710	5482.16	-65.00	-149.91	517.78	40°07'01.219"N	104°37'31.579"W	0.09	
5603.00	7.110	114.340	5564.53	-67.69	-154.14	527.04	40°07'01.178"N	104°37'31.460"W	0.17	
5689.00	6.340	116.170	5649.94	-70.46	-158.43	536.16	40°07'01.135"N	104°37'31.343"W	0.93	
5774.00	5.980	114.150	5734.45	-72.97	-162.31	544.41	40°07'01.097"N	104°37'31.237"W	0.49	
5859.00	6.140	114.320	5818.97	-75.30	-165.99	552.59	40°07'01.061"N	104°37'31.131"W	0.19	
5944.00	6.610	112.140	5903.45	-77.57	-169.71	561.26	40°07'01.024"N	104°37'31.020"W	0.62	
6030.00	6.910	105.800	5988.85	-79.27	-172.98	570.83	40°07'00.991"N	104°37'30.897"W	0.93	
6115.00	7.550	109.020	6073.17	-80.81	-176.19	581.03	40°07'00.960"N	104°37'30.765"W	0.89	
6200.00	7.790	111.440	6157.41	-82.98	-180.12	591.67	40°07'00.921"N	104°37'30.628"W	0.47	
6286.00	6.930	111.050	6242.70	-85.28	-184.11	601.93	40°07'00.881"N	104°37'30.496"W	1.00	
6372.00	8.960	89.820	6327.89	-85.25	-185.96	613.48	40°07'00.863"N	104°37'30.348"W	4.11	
6415.00	12.390	68.960	6370.16	-82.37	-184.29	621.14	40°07'00.880"N	104°37'30.249"W	11.89	
6457.00	13.160	49.990	6411.14	-76.48	-179.60	629.01	40°07'00.926"N	104°37'30.148"W	10.11	
6500.00	16.480	31.480	6452.72	-67.12	-171.24	635.95	40°07'01.009"N	104°37'30.058"W	13.36	
6542.00	21.060	24.210	6492.48	-54.31	-159.27	642.16	40°07'01.127"N	104°37'29.978"W	12.23	
6585.00	24.650	22.910	6532.10	-38.13	-143.96	648.82	40°07'01.278"N	104°37'29.893"W	8.43	
6628.00	27.780	24.190	6570.67	-19.73	-126.55	656.42	40°07'01.450"N	104°37'29.795"W	7.40	
6670.00	31.660	20.490	6607.15	0.55	-107.29	664.29	40°07'01.641"N	104°37'29.693"W	10.21	
6713.00	35.100	15.470	6643.05	23.91	-84.79	671.54	40°07'01.863"N	104°37'29.600"W	10.25	
6755.00	38.500	12.700	6676.68	48.98	-60.39	677.64	40°07'02.104"N	104°37'29.522"W	9.01	
6798.00	43.110	10.930	6709.22	77.04	-32.90	683.37	40°07'02.376"N	104°37'29.448"W	11.05	
6840.00	46.080	10.390	6739.13	106.51	-3.92	688.82	40°07'02.662"N	104°37'29.378"W	7.13	
6883.00	46.830	8.310	6768.75	137.68	26.83	693.88	40°07'02.966"N	104°37'29.313"W	3.92	
6926.00	50.040	5.350	6797.28	169.81	58.77	697.68	40°07'03.282"N	104°37'29.264"W	9.07	
6968.00	54.440	4.990	6822.99	202.92	91.83	700.67	40°07'03.608"N	104°37'29.225"W	10.50	
7011.00	58.530	5.030	6846.73	238.67	127.54	703.80	40°07'03.961"N	104°37'29.185"W	9.51	
7053.00	63.460	6.250	6867.09	275.32	164.08	707.42	40°07'04.322"N	104°37'29.138"W	12.01	
7095.00	66.150	6.550	6884.97	313.27	201.84	711.66	40°07'04.696"N	104°37'29.084"W	6.44	
7137.00	69.020	6.080	6900.98	352.05	240.43	715.93	40°07'05.077"N	104°37'29.029"W	6.91	
7179.00	71.280	5.560	6915.24	391.48	279.73	719.93	40°07'05.465"N	104°37'28.977"W	5.51	
7222.00	73.150	2.530	6928.38	432.25	320.56	722.81	40°07'05.869"N	104°37'28.940"W	8.00	
7265.00	74.590	0.670	6940.33	473.19	361.85	723.96	40°07'06.277"N	104°37'28.925"W	5.34	
7307.00	77.610	358.360	6950.42	513.36	402.61	723.61	40°07'06.680"N	104°37'28.930"W	8.96	
7350.00	82.130	356.500	6957.98	554.79	444.88	721.71	40°07'07.097"N	104°37'28.954"W	11.34	
7392.00	86.520	355.870	6962.13	595.49	486.58	718.93	40°07'07.509"N	104°37'28.990"W	10.56	
7429.00	88.210	355.560	6963.83	631.43	523.43	716.17	40°07'07.874"N	104°37'29.025"W	4.64	
7474.00†	88.927	356.102	6964.96	675.19	568.30	712.90	40°07'08.317"N	104°37'29.068"W	2.00	7" Casing Point
7547.00	90.090	356.980	6965.58	746.41	641.16	708.49	40°07'09.037"N	104°37'29.124"W	2.00	
7633.00	89.470	356.630	6965.91	830.40	727.03	703.70	40°07'09.885"N	104°37'29.186"W	0.83	
7718.00	88.240	357.160	6967.61	913.42	811.88	699.10	40°07'10.724"N	104°37'29.245"W	1.58	
7803.00	87.800	357.310	6970.55	996.52	896.73	695.00	40°07'11.563"N	104°37'29.298"W	0.55	
7888.00	88.210	1.400	6973.51	1080.19	981.66	694.04	40°07'12.402"N	104°37'29.310"W	4.83	
7974.00	90.520	3.440	6974.46	1165.57	1067.56	697.67	40°07'13.251"N	104°37'29.263"W	3.58	
8059.00	90.920	3.100	6973.39	1250.10	1152.42	702.52	40°07'14.089"N	104°37'29.201"W	0.62	
8143.00	89.130	2.670	6973.36	1333.59	1236.31	706.75	40°07'14.918"N	104°37'29.146"W	2.19	
8229.00	89.190	2.420	6974.62	1418.99	1322.21	710.57	40°07'15.767"N	104°37'29.097"W	0.30	
8312.00	89.600	1.870	6975.49	1501.36	1405.15	713.68	40°07'16.587"N	104°37'29.057"W	0.83	
8397.00	90.430	1.860	6975.47	1585.66	1490.11	716.44	40°07'17.426"N	104°37'29.022"W	0.98	
8482.00	90.770	2.000	6974.58	1669.96	1575.05	719.30	40°07'18.266"N	104°37'28.985"W	0.43	
8568.00	90.950	2.060	6973.29	1755.28	1660.99	722.35	40°07'19.115"N	104°37'28.945"W	0.22	
8653.00	91.570	3.390	6971.42	1839.71	1745.87	726.39	40°07'19.954"N	104°37'28.893"W	1.73	
8738.00	94.250	0.360	6967.10	1923.89	1830.70	729.17	40°07'20.792"N	104°37'28.858"W	4.76	
8823.00	93.980	0.600	6961.01	2007.68	1915.48	729.88	40°07'21.630"N	104°37'28.848"W	0.42	
8907.00	92.430	1.160	6956.31	2090.66	1999.33	731.17	40°07'22.459"N	104°37'28.832"W	1.96	
8992.00	92.470	0.440	6952.68	2174.67	2084.24	732.35	40°07'23.298"N	104°37'28.817"W	0.85	



Actual Wellpath Report

POWERS 1N-23HZ AWP

Page 4 of 6



REFERENCE WELLPATH IDENTIFICATION

Operator	ANADARKO E&P COMPANY LP	Slot	SLOT#02 POWERS 1N-23HZ (225'FSL & 1549'FEL, SEC.23)
Area	COLORADO	Well	POWERS 1N-23HZ
Field	WELD COUNTY (KERR MCGEE)	Wellbore	POWERS 1N-23HZ AWB
Facility	SEC.23-T2N-R65W		

WELLPATH DATA (150 stations)

MD [ft]	Inclination [°]	Azimuth [°]	TVD [ft]	Vert Sect [ft]	North [ft]	East [ft]	Latitude	Longitude	DLS [°/100ft]	Comments
9077.00	89.030	0.770	6951.56	2258.69	2169.22	733.25	40°07'24.137"N	104°37'28.805"W	4.07	
9162.00	89.480	359.850	6952.67	2342.65	2254.21	733.71	40°07'24.977"N	104°37'28.799"W	1.20	
9247.00	90.520	359.630	6952.67	2426.49	2339.21	733.33	40°07'25.817"N	104°37'28.804"W	1.25	
9333.00	91.350	359.670	6951.26	2511.28	2425.19	732.80	40°07'26.667"N	104°37'28.811"W	0.97	
9418.00	89.290	359.700	6950.79	2595.10	2510.19	732.33	40°07'27.507"N	104°37'28.817"W	2.42	
9503.00	90.710	0.010	6950.79	2678.97	2595.18	732.12	40°07'28.347"N	104°37'28.819"W	1.71	
9588.00	89.720	358.830	6950.47	2762.72	2680.18	731.26	40°07'29.187"N	104°37'28.830"W	1.81	
9673.00	90.360	359.460	6950.41	2846.41	2765.17	729.99	40°07'30.027"N	104°37'28.847"W	1.06	
9758.00	91.220	358.670	6949.24	2930.07	2850.15	728.60	40°07'30.866"N	104°37'28.865"W	1.37	
9843.00	90.610	359.850	6947.88	3013.78	2935.13	727.50	40°07'31.706"N	104°37'28.879"W	1.56	
9929.00	89.410	0.150	6947.87	3098.66	3021.12	727.50	40°07'32.556"N	104°37'28.879"W	1.44	
10014.00	90.090	1.570	6948.24	3182.76	3106.11	728.78	40°07'33.396"N	104°37'28.862"W	1.85	
10099.00	90.650	1.080	6947.69	3266.95	3191.09	730.75	40°07'34.236"N	104°37'28.837"W	0.88	
10184.00	89.100	2.250	6947.87	3351.20	3276.05	733.22	40°07'35.075"N	104°37'28.805"W	2.28	
10269.00	90.120	1.990	6948.45	3435.55	3360.98	736.36	40°07'35.915"N	104°37'28.765"W	1.24	
10354.00	87.960	0.840	6949.88	3519.74	3445.94	738.46	40°07'36.754"N	104°37'28.737"W	2.88	
10440.00	87.740	0.780	6953.10	3604.76	3531.87	739.67	40°07'37.603"N	104°37'28.722"W	0.27	
10525.00	88.270	0.790	6956.06	3688.79	3616.81	740.84	40°07'38.443"N	104°37'28.707"W	0.62	
10610.00	90.120	0.850	6957.26	3772.86	3701.79	742.05	40°07'39.282"N	104°37'28.691"W	2.18	
10695.00	90.800	0.770	6956.57	3856.95	3786.78	743.26	40°07'40.122"N	104°37'28.676"W	0.81	
10781.00	90.060	1.110	6955.93	3942.05	3872.76	744.67	40°07'40.972"N	104°37'28.657"W	0.95	
10866.00	90.470	359.540	6955.54	4026.02	3957.76	745.15	40°07'41.812"N	104°37'28.651"W	1.91	
10951.00	91.450	359.150	6954.11	4109.75	4042.74	744.18	40°07'42.652"N	104°37'28.664"W	1.24	
11036.00	89.750	358.100	6953.22	4193.29	4127.71	742.14	40°07'43.491"N	104°37'28.690"W	2.35	
11119.00	89.570	357.320	6953.71	4274.62	4210.64	738.82	40°07'44.311"N	104°37'28.732"W	0.96	
11204.00	90.090	357.820	6953.97	4357.87	4295.56	735.22	40°07'45.150"N	104°37'28.779"W	0.85	
11299.00	90.940	359.150	6953.11	4451.20	4390.52	732.71	40°07'46.089"N	104°37'28.811"W	1.66	
11394.00	90.120	358.140	6952.23	4544.58	4485.49	730.46	40°07'47.027"N	104°37'28.840"W	1.37	
11418.00	90.250	357.650	6952.16	4568.11	4509.47	729.58	40°07'47.264"N	104°37'28.851"W	2.11	Last BHI MWD Survey
11488.00	90.250	357.650	6951.85	4636.68	4579.41	726.71	40°07'47.955"N	104°37'28.888"W	0.00	Projection to Bit

HOLE & CASING SECTIONS - Ref Wellbore: POWERS 1N-23HZ AWB Ref Wellpath: POWERS 1N-23HZ AWP

String/Diameter	Start MD [ft]	End MD [ft]	Interval [ft]	Start TVD [ft]	End TVD [ft]	Start N/S [ft]	Start E/W [ft]	End N/S [ft]	End E/W [ft]
13.5in Open Hole	16.00	976.00	960.00	16.00	975.97	0.00	0.00	2.05	5.41
9.625in Casing Surface	16.00	976.00	960.00	16.00	975.97	0.00	0.00	2.05	5.41
8.75in Open Hole	976.00	7484.00	6508.00	975.97	6965.13	2.05	5.41	578.27	712.23
7in Casing Intermediate	16.00	7474.00	7458.00	16.00	6964.96	0.00	0.00	568.30	712.90
6.125in Open Hole	7474.00	11488.00	4014.00	6964.96	6951.85	568.30	712.90	4579.41	726.71



Actual Wellpath Report

POWERS 1N-23HZ AWP

Page 5 of 6



REFERENCE WELLPATH IDENTIFICATION

Operator	ANADARKO E&P COMPANY LP	Slot	SLOT#02 POWERS 1N-23HZ (225'FSL & 1549'FEL, SEC.23)
Area	COLORADO	Well	POWERS 1N-23HZ
Field	WELD COUNTY (KERR MCGEE)	Wellbore	POWERS 1N-23HZ AWB
Facility	SEC.23-T2N-R65W		

TARGETS

Name	MD [ft]	TVD [ft]	North [ft]	East [ft]	Grid East [US ft]	Grid North [US ft]	Latitude	Longitude	Shape
POWERS PAD SECTION LINES		0.00	-0.30	24.08	3244092.03	1286819.99	40°07'02.698"N	104°37'37.934"W	polygon
POWERS 1N-23HZ BHL ON PLAT (460'FNL & 840'FEL, REV-1)		6957.00	4585.06	744.36	3244767.12	1291412.03	40°07'48.011"N	104°37'28.661"W	point
POWERS PAD HARDLINES (460'SETBACKS)		7172.00	-0.30	24.08	3244092.03	1286819.99	40°07'02.698"N	104°37'37.934"W	polygon

WELLPATH COMPOSITION - Ref Wellbore: POWERS 1N-23HZ AWB Ref Wellpath: POWERS 1N-23HZ AWP

Start MD [ft]	End MD [ft]	Positional Uncertainty Model	Log Name/Comment	Wellbore
16.00	930.00	NaviTrak (Standard)	BHI MWD SURVEYS 13 1/2" HOLE <85-930>	POWERS 1N-23HZ AWB
930.00	7429.00	NaviTrak (Standard)	BHI MWD SURVEYS 8 3/4" HOLE <1067-7429>	POWERS 1N-23HZ AWB
7429.00	11418.00	OnTrak (Standard)	BHI MWD SURVEYS 6 1/8" HOLE <7547-11418>	POWERS 1N-23HZ AWB
11418.00	11488.00	Blind Drilling (std)	Projection to bit	POWERS 1N-23HZ AWB



Actual Wellpath Report

POWERS 1N-23HZ AWP

Page 6 of 6



REFERENCE WELLPATH IDENTIFICATION

Operator	ANADARKO E&P COMPANY LP	Slot	SLOT#02 POWERS 1N-23HZ (225'FSL & 1549'FEL, SEC.23)
Area	COLORADO	Well	POWERS 1N-23HZ
Field	WELD COUNTY (KERR MCGEE)	Wellbore	POWERS 1N-23HZ AWB
Facility	SEC.23-T2N-R65W		

WELLPATH COMMENTS

MD [ft]	Inclination [°]	Azimuth [°]	TVD [ft]	Comment
16.00	0.000	108.990	16.00	Tie-On
85.00	0.280	108.990	85.00	Begin BHI MWD Surveys
7474.00	88.927	356.102	6964.96	7" Casing Point
11418.00	90.250	357.650	6952.16	Last BHI MWD Survey
11488.00	90.250	357.650	6951.85	Projection to Bit