

S 1/4 Cor. Sec. 32  
1970 Brass Cap, 0.2' High  
E-W Fenceline  
Lat: 39.651225°  
Long: 108.192233°

**T5S, R96W, 6th P.M.**

SE Cor. Sec. 33  
1953 Brass Cap  
0.2' High, Pile  
of Stones, Fence  
Lat: 39.651322°  
Long: 108.164147°

**Encana OIL & GAS (USA) INC.**

Well location, N. PARACHUTE UWF07C-03 H04 596 (SURFACE LOCATION), located as shown in the SE 1/4 NE 1/4 of Section 4, T5S, R96W, 6th P.M., Garfield County, Colorado.

**BASIS OF ELEVATION**

BENCH MARK (H79) LOCATED IN THE NE 1/4 OF SECTION 35, T4S, R98W, 6th P.M. TAKEN FROM THE BULL FORK QUADRANGLE, COLORADO, 7.5 MINUTE SERIES (TOPO GRAPHICAL MAP) PUBLISHED BY THE UNITED STATES DEPARTMENT OF THE INTERIOR, GEOLOGICAL SURVEY. SAID ELEVATION IS MARKED AS BEING 8535 FEET.

**BASIS OF BEARINGS**

BASIS OF BEARINGS IS A G.P.S. OBSERVATION.

*Sheet 1y of 9*



**CERTIFICATE**

THIS IS TO CERTIFY THAT THE ABOVE PLAT WAS PREPARED AND LOCATION AS SHOWN WAS STAKED ON THE GROUND FROM FIELD NOTES OF ACTUAL SURVEYS MADE BY ME OR UNDER MY SUPERVISION AND THAT THE SAME ARE TRUE AND CORRECT TO THE BEST OF MY KNOWLEDGE AND BELIEF.

REGISTERED LAND SURVEYOR  
REGISTRATION NO. 17492  
STATE OF COLORADO  
04-20-12

**UINTAH ENGINEERING & LAND SURVEYING**  
85 SOUTH 200 EAST - VERNAL, UTAH 84078  
(435) 789-1017

**LEGEND:**

- └─ = 90° SYMBOL
- = PROPOSED WELL HEAD.
- ▲ = SECTION CORNERS LOCATED.
- △ = SECTION CORNERS RE-ESTABLISHED.  
(Not Set on Ground.)

**LINE TABLE**

LINE	DIRECTION	LENGTH
L1	N89°35'21"E	195.03'
L2	S89°37'21"W	200.90'

PDOP = 1.4

**NAD 83 (SURFACE LOCATION)**

LATITUDE = 39°38'45.68" (39.646022)  
LONGITUDE = 108°09'53.89" (108.164969)

**NAD 27 (SURFACE LOCATION)**

LATITUDE = 39°38'45.77" (39.646047)  
LONGITUDE = 108°09'51.60" (108.164333)

SCALE 1" = 1000'	DATE SURVEYED: 04-11-12	DATE DRAWN: 04-17-12
PARTY B.B. C.C. T.B.	REFERENCES G.L.O. PLAT	
WEATHER COLD	FILE Encana OIL & GAS (USA) INC.	

N00°14'57"W  
2630.20' (Meas. to C.C.)

N00°14'57"W  
2630.20' (Meas. to True)

N00°08'02"W - 2634.58' (Meas.)

LOT 4

LOT 3

LOT 2

LOT 1

1930'

N00°18'20"W - 2634.55' (Meas.)

N00°11'23"W  
2654.26' (Meas. To C.C.)

N00°11'23"W  
2653.24' (Meas. To True)

**N. PARACHUTE UWF07C-03 H04 596**  
Elev. Graded Ground = 8270.5'

1917 Brass Cap  
2.0' High  
Lat: 39.644039°  
Long: 108.183539°

NOTE:  
THE PROPOSED BOTTOM HOLE FOR THIS WELL  
IS LOCATED IN THE SE 1/4 NE 1/4 OF SECTION  
3, T5S, R96W, 6th P.M. AT A DISTANCE OF 2066'  
FNL 1272' FEL. IT BEARS S88°26'06"E 4032.79'  
FROM THE PROPOSED WELL HEAD.

NOTE:  
THE PROPERTY LINE IS LOCATED N52°W  
3078' FROM THE PROPOSED WELL HEAD.

NOTE:  
SEE SHEET 6A FOR EXISTING IMPROVEMENTS  
WITHIN 400' OF THE PROPOSED WELL  
DISTURBANCE.

1917 Brass Cap  
2.5' High  
Lat: 39.636808°  
Long: 108.183536°

1917 Brass Cap  
2.0' High  
Lat: 39.636814°  
Long: 108.174164°

1917 Brass Cap  
2.3' High  
Lat: 39.636808°  
Long: 108.164797°

S89°50'59"W - 2640.58' (Meas.)

S89°55'26"W - 2638.66' (Meas.)

T5S, R96W, 6th P.M.

Encana OIL & GAS (USA) INC.

Well location, N. PARACHUTE UWF07C-03 H04 596 (TARGET BOTTOM HOLE), located as shown in the SE 1/4 NE 1/4 of Section 3, T5S, R96W, 6th P.M., Garfield County, Colorado.

### BASIS OF ELEVATION

BENCH MARK (H79) LOCATED IN THE NE 1/4 OF SECTION 35, T4S, R98W, 6th P.M. TAKEN FROM THE BULL FORK QUADRANGLE, COLORADO, 7.5 MINUTE SERIES (TOPO GRAPHICAL MAP) PUBLISHED BY THE UNITED STATES DEPARTMENT OF THE INTERIOR, GEOLOGICAL SURVEY. SAID ELEVATION IS MARKED AS BEING 8535 FEET.

### BASIS OF BEARINGS

BASIS OF BEARINGS IS A G.P.S. OBSERVATION.

Sheet 1z of 9



### CERTIFICATE

THIS IS TO CERTIFY THAT THE ABOVE PLAT WAS PREPARED AND LOCATION AS SHOWN WAS STAKED ON THE GROUND FROM FIELD NOTES OF ACTUAL SURVEYS MADE BY ME OR UNDER MY SUPERVISION AND THAT THE SAME ARE TRUE AND CORRECT TO THE BEST OF MY KNOWLEDGE AND BELIEF.

REGISTERED LAND SURVEYOR  
REGISTRATION NO. 17492  
STATE OF COLORADO  
04-20-12

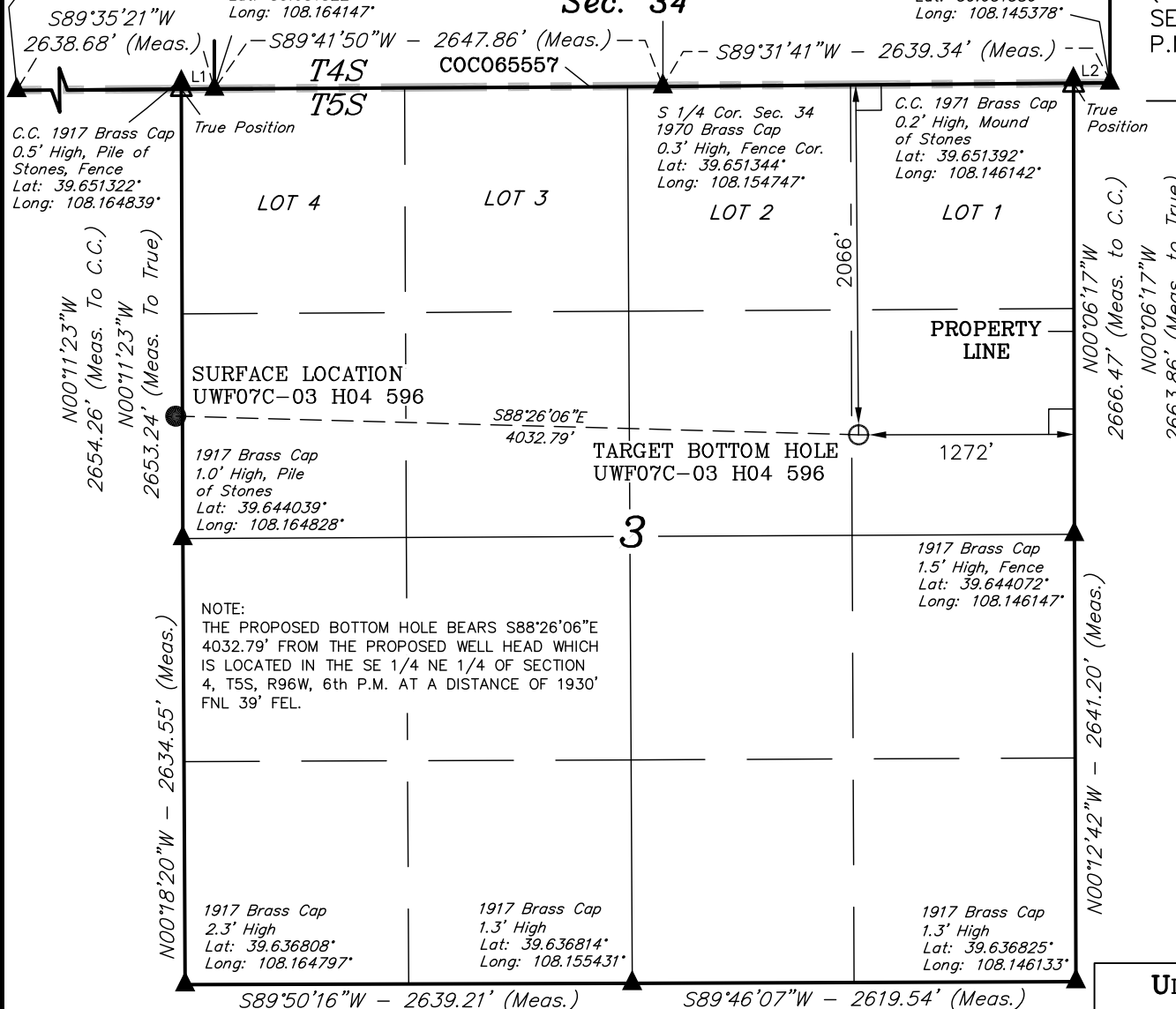
**UINTAH ENGINEERING & LAND SURVEYING**  
85 SOUTH 200 EAST - VERNAL, UTAH 84078  
(435) 789-1017

SCALE 1" = 1000'	DATE SURVEYED: 04-11-12	DATE DRAWN: 04-17-12
PARTY B.B. C.C. T.B.	REFERENCES G.L.O. PLAT	
WEATHER COLD	FILE Encana OIL & GAS (USA) INC.	

S 1/4 Cor. Sec. 33  
1970 Brass Cap  
0.3' High, Fence Cor.  
Lat: 39.651286°  
Long: 108.173514°

SW Cor. Sec. 34  
1953 Brass Cap  
0.2' High, Pile  
of Stones, Fence  
Lat: 39.651322°  
Long: 108.164147°

SE Cor. Sec. 34  
1953 Brass Cap  
0.2' High, E-W  
Fenceline, Mound  
of Stones, Steel Post  
Lat: 39.651386°  
Long: 108.145378°



### LEGEND: