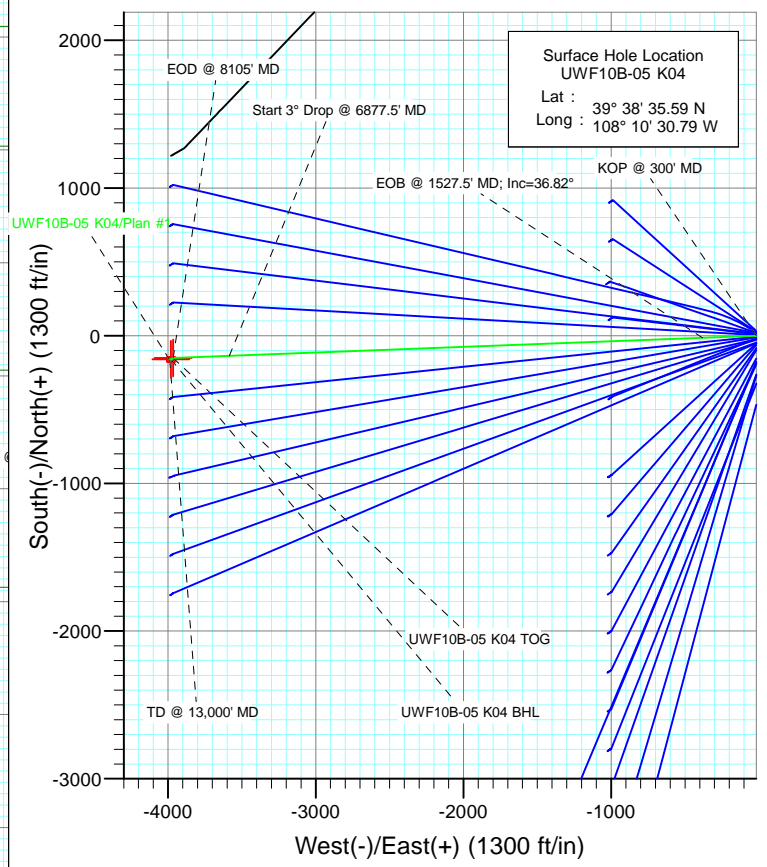


SECTION DETAILS

Sec	MD	Inc	Azi	TVD	+N/-S	+E/-W	Dleg	TFace	V Sect	Target
1	0.0	0.00	0.00	0.0	0.0	0.0	0.00	0.00	0.0	
2	300.0	0.00	0.00	300.0	0.0	0.0	0.00	0.00	0.0	
3	1527.5	36.82	267.83	1444.7	-14.5	-380.8	3.00	267.83	381.1	
4	6877.5	36.82	267.83	5727.3	-136.1	-3585.1	0.00	0.00	3587.7	
5	8105.0	0.00	0.00	6872.0	-150.6	-3965.9	3.00	180.00	3968.7	UWF10B-05 K04 TOG
6	9841.1	0.39	236.43	8608.1	-153.9	-3970.9	0.02	236.43	3973.8	
7	11599.1	0.39	236.43	10366.0	-160.6	-3980.9	0.00	0.00	3984.1	UWF10B-05 K04 BHL
8	13000.0	0.39	236.43	11766.9	-165.9	-3988.9	0.00	0.00	3992.4	



**T M**

Azimuths to True North  
 Magnetic North: 10.34°

Magnetic Field  
 Strength: 52205.4snT  
 Dip Angle: 65.80°  
 Date: 4/12/2012  
 Model: IGRF2010

FORMATION TOP DETAILS

TVDPath	MDPath	Formation
964.0	978.2	A_GROOVE_TVD
1115.0	1142.0	B_GROOVE_TVD
1155.0	1186.0	B_GROOVE_BASE_TVD
1909.0	2107.5	GARDEN_GULCH_TVD
2968.0	3430.5	WASATCH_FM_TVD
4949.0	5905.2	WASATCH_G_TVD
6872.0	8105.0	WILLIAMS_FORK_TVD
10366.0	11599.1	ROLLINS_TVD
10630.0	11863.1	COZZETTE_TVD
10803.0	12036.1	CORCORAN_TVD
11101.0	12334.1	UPPER_SEGO_TVD

Plan #1  
 UWF10B-05 K04  
 WELL @ 8226.0ft (Original Well Elev)  
 North American Datum 1983  
 Well UWF10B-05 K04, True North

Type	Target	Azimuth	Origin	N/S	E/W	From TVD
TD	No Target (Freehand)	267.62	Type Slot	0.0	0.0	0.0
Name	TVD	+N/-S	+E/-W	Latitude	Longitude	
UWF10B-05 K04 TOG	6872.0	-150.6	-3965.9	39° 38' 34.10 N	108° 11' 21.49 W	
UWF10B-05 K04 BHL	10366.0	-160.6	-3980.9	39° 38' 34.00 N	108° 11' 21.68 W	

## Planning Report

<b>Database:</b>	USA EDM 5000 Multi Users DB	<b>Local Co-ordinate Reference:</b>	Well UWF10B-05 K04
<b>Company:</b>	EnCana Oil & Gas (USA) Inc	<b>TVD Reference:</b>	WELL @ 8226.0ft (Original Well Elev)
<b>Project:</b>	North Piceance	<b>MD Reference:</b>	WELL @ 8226.0ft (Original Well Elev)
<b>Site:</b>	K04 Pad	<b>North Reference:</b>	True
<b>Well:</b>	UWF10B-05 K04	<b>Survey Calculation Method:</b>	Minimum Curvature
<b>Wellbore:</b>	DD		
<b>Design:</b>	Plan #1		

<b>Project</b>	North Piceance		
<b>Map System:</b>	US State Plane 1983	<b>System Datum:</b>	Mean Sea Level
<b>Geo Datum:</b>	North American Datum 1983		
<b>Map Zone:</b>	Colorado Central Zone		

<b>Site</b>	K04 Pad				
<b>Site Position:</b>		<b>Northing:</b>	1,636,938.27 ft	<b>Latitude:</b>	39° 33' 11.18 N
<b>From:</b>	Lat/Long	<b>Easting:</b>	2,263,572.45 ft	<b>Longitude:</b>	108° 6' 43.51 W
<b>Position Uncertainty:</b>	0.0 ft	<b>Slot Radius:</b>	13.200 in	<b>Grid Convergence:</b>	-1.65 °

<b>Well</b>	UWF10B-05 K04					
<b>Well Position</b>	<b>+N/-S</b>	0.0 ft	<b>Northing:</b>	1,670,266.26 ft	<b>Latitude:</b>	39° 38' 35.59 N
	<b>+E/-W</b>	0.0 ft	<b>Easting:</b>	2,246,744.30 ft	<b>Longitude:</b>	108° 10' 30.79 W
<b>Position Uncertainty</b>		0.0 ft	<b>Wellhead Elevation:</b>	ft	<b>Ground Level:</b>	8,193.0 ft

<b>Wellbore</b>	DD				
<b>Magnetics</b>	<b>Model Name</b>	<b>Sample Date</b>	<b>Declination</b>	<b>Dip Angle</b>	<b>Field Strength</b>
	IGRF2010	4/12/2012	(°)	(°)	(nT)
			10.34	65.80	52,205

<b>Design</b>	Plan #1			
<b>Audit Notes:</b>				
<b>Version:</b>	<b>Phase:</b>	PLAN	<b>Tie On Depth:</b>	0.0
<b>Vertical Section:</b>	<b>Depth From (TVD)</b>	<b>+N/-S</b>	<b>+E/-W</b>	<b>Direction</b>
	(ft)	(ft)	(ft)	(°)
	0.0	0.0	0.0	267.62

Plan Sections										
Measured Depth (ft)	Inclination (°)	Azimuth (°)	Vertical Depth (ft)	+N/-S (ft)	+E/-W (ft)	Dogleg Rate (°/100ft)	Build Rate (°/100ft)	Turn Rate (°/100ft)	TFO (°)	Target
0.0	0.00	0.00	0.0	0.0	0.0	0.00	0.00	0.00	0.00	
300.0	0.00	0.00	300.0	0.0	0.0	0.00	0.00	0.00	0.00	
1,527.5	36.82	267.83	1,444.7	-14.5	-380.8	3.00	3.00	0.00	267.83	
6,877.5	36.82	267.83	5,727.3	-136.1	-3,585.1	0.00	0.00	0.00	0.00	
8,105.0	0.00	0.00	6,872.0	-150.6	-3,965.9	3.00	-3.00	0.00	180.00	UWF10B-05 K04 TOC
9,841.1	0.39	236.43	8,608.1	-153.9	-3,970.9	0.02	0.02	-7.12	236.43	
11,599.1	0.39	236.43	10,366.0	-160.6	-3,980.9	0.00	0.00	0.00	0.00	UWF10B-05 K04 BHL
13,000.0	0.39	236.43	11,766.9	-165.9	-3,988.9	0.00	0.00	0.00	0.00	

## Planning Report

<b>Database:</b>	USA EDM 5000 Multi Users DB	<b>Local Co-ordinate Reference:</b>	Well UWF10B-05 K04
<b>Company:</b>	EnCana Oil & Gas (USA) Inc	<b>TVD Reference:</b>	WELL @ 8226.0ft (Original Well Elev)
<b>Project:</b>	North Piceance	<b>MD Reference:</b>	WELL @ 8226.0ft (Original Well Elev)
<b>Site:</b>	K04 Pad	<b>North Reference:</b>	True
<b>Well:</b>	UWF10B-05 K04	<b>Survey Calculation Method:</b>	Minimum Curvature
<b>Wellbore:</b>	DD		
<b>Design:</b>	Plan #1		

Planned Survey									
Measured Depth (ft)	Inclination (°)	Azimuth (°)	Vertical Depth (ft)	+N/-S (ft)	+E/-W (ft)	Vertical Section (ft)	Dogleg Rate (°/100ft)	Build Rate (°/100ft)	Comments / Formations
0.0	0.00	0.00	0.0	0.0	0.0	0.0	0.00	0.00	
100.0	0.00	0.00	100.0	0.0	0.0	0.0	0.00	0.00	
200.0	0.00	0.00	200.0	0.0	0.0	0.0	0.00	0.00	
300.0	0.00	0.00	300.0	0.0	0.0	0.0	0.00	0.00	KOP @ 300' MD
400.0	3.00	267.83	400.0	-0.1	-2.6	2.6	3.00	3.00	
500.0	6.00	267.83	499.6	-0.4	-10.5	10.5	3.00	3.00	
600.0	9.00	267.83	598.8	-0.9	-23.5	23.5	3.00	3.00	
700.0	12.00	267.83	697.1	-1.6	-41.7	41.7	3.00	3.00	
800.0	15.00	267.83	794.3	-2.5	-65.0	65.1	3.00	3.00	
900.0	18.00	267.83	890.2	-3.5	-93.4	93.5	3.00	3.00	
978.2	20.34	267.83	964.0	-4.5	-119.1	119.1	3.00	3.00	A_GROOVE_TVD
1,000.0	21.00	267.83	984.4	-4.8	-126.8	126.9	3.00	3.00	
1,100.0	24.00	267.83	1,076.8	-6.3	-165.0	165.1	3.00	3.00	
1,142.0	25.26	267.83	1,115.0	-6.9	-182.5	182.6	3.00	3.00	B_GROOVE_TVD
1,186.5	26.59	267.83	1,155.0	-7.7	-201.9	202.1	3.00	3.00	B_GROOVE_BASE_TVD
1,200.0	27.00	267.83	1,167.1	-7.9	-208.0	208.2	3.00	3.00	
1,300.0	30.00	267.83	1,254.9	-9.7	-255.7	255.9	3.00	3.00	
1,400.0	33.00	267.83	1,340.2	-11.7	-307.9	308.1	3.00	3.00	
1,500.0	36.00	267.83	1,422.6	-13.8	-364.5	364.7	3.00	3.00	
1,527.5	36.82	267.83	1,444.7	-14.5	-380.8	381.1	3.00	3.00	EOB @ 1527.5' MD; Inc=36.82°
1,600.0	36.82	267.83	1,502.8	-16.1	-424.2	424.5	0.00	0.00	
1,700.0	36.82	267.83	1,582.8	-18.4	-484.1	484.5	0.00	0.00	
1,800.0	36.82	267.83	1,662.8	-20.7	-544.0	544.4	0.00	0.00	
1,900.0	36.82	267.83	1,742.9	-22.9	-603.9	604.3	0.00	0.00	
2,000.0	36.82	267.83	1,822.9	-25.2	-663.8	664.3	0.00	0.00	
2,100.0	36.82	267.83	1,903.0	-27.5	-723.7	724.2	0.00	0.00	
2,107.5	36.82	267.83	1,909.0	-27.7	-728.2	728.7	0.00	0.00	GARDEN_GULCH_TVD
2,200.0	36.82	267.83	1,983.0	-29.8	-783.6	784.1	0.00	0.00	
2,300.0	36.82	267.83	2,063.1	-32.0	-843.5	844.1	0.00	0.00	
2,400.0	36.82	267.83	2,143.1	-34.3	-903.4	904.0	0.00	0.00	
2,500.0	36.82	267.83	2,223.2	-36.6	-963.3	963.9	0.00	0.00	
2,600.0	36.82	267.83	2,303.2	-38.9	-1,023.2	1,023.9	0.00	0.00	
2,700.0	36.82	267.83	2,383.3	-41.1	-1,083.0	1,083.8	0.00	0.00	
2,800.0	36.82	267.83	2,463.3	-43.4	-1,142.9	1,143.8	0.00	0.00	
2,900.0	36.82	267.83	2,543.4	-45.7	-1,202.8	1,203.7	0.00	0.00	
3,000.0	36.82	267.83	2,623.4	-48.0	-1,262.7	1,263.6	0.00	0.00	
3,100.0	36.82	267.83	2,703.5	-50.2	-1,322.6	1,323.6	0.00	0.00	
3,200.0	36.82	267.83	2,783.5	-52.5	-1,382.5	1,383.5	0.00	0.00	
3,300.0	36.82	267.83	2,863.6	-54.8	-1,442.4	1,443.4	0.00	0.00	
3,400.0	36.82	267.83	2,943.6	-57.0	-1,502.3	1,503.4	0.00	0.00	
3,430.5	36.82	267.83	2,968.0	-57.7	-1,520.6	1,521.6	0.00	0.00	WASATCH_FM_TVD
3,500.0	36.82	267.83	3,023.7	-59.3	-1,562.2	1,563.3	0.00	0.00	
3,600.0	36.82	267.83	3,103.7	-61.6	-1,622.1	1,623.2	0.00	0.00	
3,700.0	36.82	267.83	3,183.8	-63.9	-1,682.0	1,683.2	0.00	0.00	
3,800.0	36.82	267.83	3,263.8	-66.1	-1,741.9	1,743.1	0.00	0.00	
3,900.0	36.82	267.83	3,343.8	-68.4	-1,801.8	1,803.1	0.00	0.00	
4,000.0	36.82	267.83	3,423.9	-70.7	-1,861.7	1,863.0	0.00	0.00	
4,100.0	36.82	267.83	3,503.9	-73.0	-1,921.6	1,922.9	0.00	0.00	
4,200.0	36.82	267.83	3,584.0	-75.2	-1,981.4	1,982.9	0.00	0.00	
4,300.0	36.82	267.83	3,664.0	-77.5	-2,041.3	2,042.8	0.00	0.00	
4,400.0	36.82	267.83	3,744.1	-79.8	-2,101.2	2,102.7	0.00	0.00	
4,500.0	36.82	267.83	3,824.1	-82.1	-2,161.1	2,162.7	0.00	0.00	

## Planning Report

<b>Database:</b>	USA EDM 5000 Multi Users DB	<b>Local Co-ordinate Reference:</b>	Well UWF10B-05 K04
<b>Company:</b>	EnCana Oil & Gas (USA) Inc	<b>TVD Reference:</b>	WELL @ 8226.0ft (Original Well Elev)
<b>Project:</b>	North Piceance	<b>MD Reference:</b>	WELL @ 8226.0ft (Original Well Elev)
<b>Site:</b>	K04 Pad	<b>North Reference:</b>	True
<b>Well:</b>	UWF10B-05 K04	<b>Survey Calculation Method:</b>	Minimum Curvature
<b>Wellbore:</b>	DD		
<b>Design:</b>	Plan #1		

Planned Survey									
Measured Depth (ft)	Inclination (°)	Azimuth (°)	Vertical Depth (ft)	+N/-S (ft)	+E/-W (ft)	Vertical Section (ft)	Dogleg Rate (°/100ft)	Build Rate (°/100ft)	Comments / Formations
4,600.0	36.82	267.83	3,904.2	-84.3	-2,221.0	2,222.6	0.00	0.00	
4,700.0	36.82	267.83	3,984.2	-86.6	-2,280.9	2,282.5	0.00	0.00	
4,800.0	36.82	267.83	4,064.3	-88.9	-2,340.8	2,342.5	0.00	0.00	
4,900.0	36.82	267.83	4,144.3	-91.2	-2,400.7	2,402.4	0.00	0.00	
5,000.0	36.82	267.83	4,224.4	-93.4	-2,460.6	2,462.4	0.00	0.00	
5,100.0	36.82	267.83	4,304.4	-95.7	-2,520.5	2,522.3	0.00	0.00	
5,200.0	36.82	267.83	4,384.5	-98.0	-2,580.4	2,582.2	0.00	0.00	
5,300.0	36.82	267.83	4,464.5	-100.3	-2,640.3	2,642.2	0.00	0.00	
5,400.0	36.82	267.83	4,544.6	-102.5	-2,700.2	2,702.1	0.00	0.00	
5,500.0	36.82	267.83	4,624.6	-104.8	-2,760.1	2,762.0	0.00	0.00	
5,600.0	36.82	267.83	4,704.7	-107.1	-2,820.0	2,822.0	0.00	0.00	
5,700.0	36.82	267.83	4,784.7	-109.4	-2,879.8	2,881.9	0.00	0.00	
5,800.0	36.82	267.83	4,864.8	-111.6	-2,939.7	2,941.8	0.00	0.00	
5,900.0	36.82	267.83	4,944.8	-113.9	-2,999.6	3,001.8	0.00	0.00	
5,905.2	36.82	267.83	4,949.0	-114.0	-3,002.8	3,004.9	0.00	0.00	WASATCH_G_TVD
6,000.0	36.82	267.83	5,024.8	-116.2	-3,059.5	3,061.7	0.00	0.00	
6,100.0	36.82	267.83	5,104.9	-118.5	-3,119.4	3,121.6	0.00	0.00	
6,200.0	36.82	267.83	5,184.9	-120.7	-3,179.3	3,181.6	0.00	0.00	
6,300.0	36.82	267.83	5,265.0	-123.0	-3,239.2	3,241.5	0.00	0.00	
6,400.0	36.82	267.83	5,345.0	-125.3	-3,299.1	3,301.5	0.00	0.00	
6,500.0	36.82	267.83	5,425.1	-127.6	-3,359.0	3,361.4	0.00	0.00	
6,600.0	36.82	267.83	5,505.1	-129.8	-3,418.9	3,421.3	0.00	0.00	
6,700.0	36.82	267.83	5,585.2	-132.1	-3,478.8	3,481.3	0.00	0.00	
6,800.0	36.82	267.83	5,665.2	-134.4	-3,538.7	3,541.2	0.00	0.00	
6,877.5	36.82	267.83	5,727.3	-136.1	-3,585.1	3,587.7	0.00	0.00	Start 3° Drop @ 6877.5' MD
6,900.0	36.15	267.83	5,745.4	-136.6	-3,598.5	3,601.0	3.00	-3.00	
7,000.0	33.15	267.83	5,827.6	-138.8	-3,655.3	3,657.9	3.00	-3.00	
7,100.0	30.15	267.83	5,912.7	-140.8	-3,707.7	3,710.3	3.00	-3.00	
7,200.0	27.15	267.83	6,000.5	-142.6	-3,755.6	3,758.3	3.00	-3.00	
7,300.0	24.15	267.83	6,090.6	-144.3	-3,798.9	3,801.6	3.00	-3.00	
7,400.0	21.15	267.83	6,182.9	-145.7	-3,837.3	3,840.1	3.00	-3.00	
7,500.0	18.15	267.83	6,277.0	-147.0	-3,870.9	3,873.7	3.00	-3.00	
7,600.0	15.15	267.83	6,372.8	-148.1	-3,899.6	3,902.4	3.00	-3.00	
7,700.0	12.15	267.83	6,470.0	-149.0	-3,923.1	3,925.9	3.00	-3.00	
7,800.0	9.15	267.83	6,568.3	-149.7	-3,941.6	3,944.4	3.00	-3.00	
7,900.0	6.15	267.83	6,667.4	-150.2	-3,954.9	3,957.7	3.00	-3.00	
8,000.0	3.15	267.83	6,767.0	-150.5	-3,963.0	3,965.8	3.00	-3.00	
8,100.0	0.15	267.83	6,867.0	-150.6	-3,965.9	3,968.7	3.00	-3.00	
8,105.0	0.00	0.00	6,872.0	-150.6	-3,965.9	3,968.7	3.00	-3.00	EOD @ 8105' MD - WILLIAMS_FORK_TVD - U
8,200.0	0.02	236.43	6,967.0	-150.6	-3,965.9	3,968.7	0.02	0.02	
8,300.0	0.04	236.43	7,067.0	-150.6	-3,966.0	3,968.8	0.02	0.02	
8,400.0	0.07	236.43	7,167.0	-150.7	-3,966.0	3,968.9	0.02	0.02	
8,500.0	0.09	236.43	7,267.0	-150.8	-3,966.2	3,969.0	0.02	0.02	
8,600.0	0.11	236.43	7,367.0	-150.9	-3,966.3	3,969.1	0.02	0.02	
8,700.0	0.13	236.43	7,467.0	-151.0	-3,966.5	3,969.3	0.02	0.02	
8,800.0	0.16	236.43	7,567.0	-151.1	-3,966.7	3,969.5	0.02	0.02	
8,900.0	0.18	236.43	7,667.0	-151.3	-3,966.9	3,969.8	0.02	0.02	
9,000.0	0.20	236.43	7,767.0	-151.5	-3,967.2	3,970.1	0.02	0.02	
9,100.0	0.23	236.43	7,867.0	-151.7	-3,967.5	3,970.4	0.02	0.02	
9,200.0	0.25	236.43	7,967.0	-151.9	-3,967.9	3,970.8	0.02	0.02	
9,300.0	0.27	236.43	8,067.0	-152.2	-3,968.3	3,971.1	0.02	0.02	
9,400.0	0.29	236.43	8,167.0	-152.4	-3,968.7	3,971.6	0.02	0.02	

## Planning Report

<b>Database:</b>	USA EDM 5000 Multi Users DB	<b>Local Co-ordinate Reference:</b>	Well UWF10B-05 K04
<b>Company:</b>	EnCana Oil & Gas (USA) Inc	<b>TVD Reference:</b>	WELL @ 8226.0ft (Original Well Elev)
<b>Project:</b>	North Piceance	<b>MD Reference:</b>	WELL @ 8226.0ft (Original Well Elev)
<b>Site:</b>	K04 Pad	<b>North Reference:</b>	True
<b>Well:</b>	UWF10B-05 K04	<b>Survey Calculation Method:</b>	Minimum Curvature
<b>Wellbore:</b>	DD		
<b>Design:</b>	Plan #1		

Planned Survey									
Measured Depth (ft)	Inclination (°)	Azimuth (°)	Vertical Depth (ft)	+N/-S (ft)	+E/-W (ft)	Vertical Section (ft)	Dogleg Rate (°/100ft)	Build Rate (°/100ft)	Comments / Formations
9,500.0	0.32	236.43	8,267.0	-152.7	-3,969.1	3,972.0	0.02	0.02	
9,600.0	0.34	236.43	8,367.0	-153.0	-3,969.6	3,972.5	0.02	0.02	
9,700.0	0.36	236.43	8,467.0	-153.4	-3,970.1	3,973.0	0.02	0.02	
9,800.0	0.38	236.43	8,567.0	-153.7	-3,970.6	3,973.6	0.02	0.02	
9,841.1	0.39	236.43	8,608.1	-153.9	-3,970.9	3,973.8	0.02	0.02	
9,900.0	0.39	236.43	8,667.0	-154.1	-3,971.2	3,974.2	0.00	0.00	
10,000.0	0.39	236.43	8,767.0	-154.5	-3,971.8	3,974.8	0.00	0.00	
10,100.0	0.39	236.43	8,867.0	-154.9	-3,972.3	3,975.3	0.00	0.00	
10,200.0	0.39	236.43	8,967.0	-155.3	-3,972.9	3,975.9	0.00	0.00	
10,300.0	0.39	236.43	9,067.0	-155.6	-3,973.5	3,976.5	0.00	0.00	
10,400.0	0.39	236.43	9,167.0	-156.0	-3,974.1	3,977.1	0.00	0.00	
10,500.0	0.39	236.43	9,267.0	-156.4	-3,974.6	3,977.7	0.00	0.00	
10,600.0	0.39	236.43	9,366.9	-156.8	-3,975.2	3,978.3	0.00	0.00	
10,700.0	0.39	236.43	9,466.9	-157.1	-3,975.8	3,978.9	0.00	0.00	
10,800.0	0.39	236.43	9,566.9	-157.5	-3,976.3	3,979.5	0.00	0.00	
10,900.0	0.39	236.43	9,666.9	-157.9	-3,976.9	3,980.0	0.00	0.00	
11,000.0	0.39	236.43	9,766.9	-158.3	-3,977.5	3,980.6	0.00	0.00	
11,100.0	0.39	236.43	9,866.9	-158.7	-3,978.1	3,981.2	0.00	0.00	
11,200.0	0.39	236.43	9,966.9	-159.0	-3,978.6	3,981.8	0.00	0.00	
11,300.0	0.39	236.43	10,066.9	-159.4	-3,979.2	3,982.4	0.00	0.00	
11,400.0	0.39	236.43	10,166.9	-159.8	-3,979.8	3,983.0	0.00	0.00	
11,500.0	0.39	236.43	10,266.9	-160.2	-3,980.3	3,983.6	0.00	0.00	
11,599.1	0.39	236.43	10,366.0	-160.6	-3,980.9	3,984.1	0.00	0.00	ROLLINS_TVD - UWF10B-05 K04 BHL
11,600.0	0.39	236.43	10,366.9	-160.6	-3,980.9	3,984.1	0.00	0.00	
11,700.0	0.39	236.43	10,466.9	-160.9	-3,981.5	3,984.7	0.00	0.00	
11,800.0	0.39	236.43	10,566.9	-161.3	-3,982.1	3,985.3	0.00	0.00	
11,863.1	0.39	236.43	10,630.0	-161.6	-3,982.4	3,985.7	0.00	0.00	COZZETTE_TVD
11,900.0	0.39	236.43	10,666.9	-161.7	-3,982.6	3,985.9	0.00	0.00	
12,000.0	0.39	236.43	10,766.9	-162.1	-3,983.2	3,986.5	0.00	0.00	
12,036.1	0.39	236.43	10,803.0	-162.2	-3,983.4	3,986.7	0.00	0.00	CORCORAN_TVD
12,100.0	0.39	236.43	10,866.9	-162.5	-3,983.8	3,987.1	0.00	0.00	
12,200.0	0.39	236.43	10,966.9	-162.8	-3,984.3	3,987.7	0.00	0.00	
12,300.0	0.39	236.43	11,066.9	-163.2	-3,984.9	3,988.3	0.00	0.00	
12,334.1	0.39	236.43	11,101.0	-163.3	-3,985.1	3,988.5	0.00	0.00	UPPER_SEGO_TVD
12,400.0	0.39	236.43	11,166.9	-163.6	-3,985.5	3,988.8	0.00	0.00	
12,500.0	0.39	236.43	11,266.9	-164.0	-3,986.1	3,989.4	0.00	0.00	
12,600.0	0.39	236.43	11,366.9	-164.4	-3,986.6	3,990.0	0.00	0.00	
12,700.0	0.39	236.43	11,466.9	-164.7	-3,987.2	3,990.6	0.00	0.00	
12,800.0	0.39	236.43	11,566.9	-165.1	-3,987.8	3,991.2	0.00	0.00	
12,900.0	0.39	236.43	11,666.9	-165.5	-3,988.3	3,991.8	0.00	0.00	
13,000.0	0.39	236.43	11,766.9	-165.9	-3,988.9	3,992.4	0.00	0.00	TD @ 13,000' MD

## Planning Report

<b>Database:</b>	USA EDM 5000 Multi Users DB	<b>Local Co-ordinate Reference:</b>	Well UWF10B-05 K04
<b>Company:</b>	EnCana Oil & Gas (USA) Inc	<b>TVD Reference:</b>	WELL @ 8226.0ft (Original Well Elev)
<b>Project:</b>	North Piceance	<b>MD Reference:</b>	WELL @ 8226.0ft (Original Well Elev)
<b>Site:</b>	K04 Pad	<b>North Reference:</b>	True
<b>Well:</b>	UWF10B-05 K04	<b>Survey Calculation Method:</b>	Minimum Curvature
<b>Wellbore:</b>	DD		
<b>Design:</b>	Plan #1		

Targets									
Target Name	Dip Angle	Dip Dir.	TVD	+N/-S	+E/-W	Northing	Easting	Latitude	Longitude
- hit/miss target	(°)	(°)	(ft)	(ft)	(ft)	(ft)	(ft)		
- Shape									
UWF10B-05 K04 BHL - plan hits target center - Rectangle (sides W30.0 H50.0 D0.0)	0.00	0.00	10,366.0	-160.6	-3,980.9	1,670,222.99	2,242,760.40	39° 38' 34.00 N	108° 11' 21.68 W
UWF10B-05 K04 TOG - plan hits target center - Point	0.00	0.00	6,872.0	-150.6	-3,965.9	1,670,232.50	2,242,775.69	39° 38' 34.10 N	108° 11' 21.49 W

Formations					
Measured Depth	Vertical Depth	Name	Lithology	Dip	Dip Direction
(ft)	(ft)			(°)	(°)
978.2	964.0	A_GROOVE_TVD			
1,142.0	1,115.0	B_GROOVE_TVD			
1,186.5	1,155.0	B_GROOVE_BASE_TVD			
2,107.5	1,909.0	GARDEN_GULCH_TVD			
3,430.5	2,968.0	WASATCH_FM_TVD			
5,905.2	4,949.0	WASATCH_G_TVD			
8,105.0	6,872.0	WILLIAMS_FORK_TVD			
11,599.1	10,366.0	ROLLINS_TVD			
11,863.1	10,630.0	COZZETTE_TVD			
12,036.1	10,803.0	CORCORAN_TVD			
12,334.1	11,101.0	UPPER_SEGO_TVD			

Plan Annotations				
Measured Depth	Vertical Depth	Local Coordinates		Comment
(ft)	(ft)	+N/-S (ft)	+E/-W (ft)	
300.0	300.0	0.0	0.0	KOP @ 300' MD
1,527.5	1,444.7	-14.5	-380.8	EOB @ 1527.5' MD; Inc=36.82°
6,877.5	5,727.3	-136.1	-3,585.1	Start 3° Drop @ 6877.5' MD
8,105.0	6,872.0	-150.6	-3,965.9	EOD @ 8105' MD
13,000.0	11,766.9	-165.9	-3,988.9	TD @ 13,000' MD