

S 1/4 Cor. Sec. 32
 1970 Brass Cap, 0.2' High
 E-W Fenceline
 Lat: 39.651225°
 Long: 108.192233°

T5S, R96W, 6th P.M.

SE Cor. Sec. 33
 1953 Brass Cap
 0.2' High, Pile
 of Stones, Fence
 Lat: 39.651322°
 Long: 108.164147°

SW Cor. Sec. 33
 1970 Brass Cap, 0.2' High
 Steel Post, Fenceline
 Lat: 39.651258°
 Long: 108.182847°

Sec. 33

S89°35'21"W - 2638.68' (Meas.)

C.C. 1917 Brass Cap
 0.5' High, Pile of Stones, Fence
 Lat: 39.651322°
 Long: 108.164839°

S89°37'21"W
 2643.75' (Meas.)
 True Position L2

S89°40'56"W - 2629.55' (Meas.)

N00°14'57"W
 2629.58' (Meas. To C.C.)
 N00°14'57"W
 2630.20' (Meas. To True)

C.C. 1917 Brass Cap
 Lat: 39.651256°
 Long: 108.183561°

PROPERTY LINE

LOT 4

LOT 3

T4S

S 1/4 Cor. Sec. 33
 1970 Brass Cap
 0.3' High, Fence Cor.
 Lat: 39.651286°
 Long: 108.173514°

LOT 2

LOT 1

True Position
 N00°11'23"W
 2654.26' (Meas. To C.C.)
 N00°11'23"W
 2653.24' (Meas. To True)

NOTE:
 SEE SHEET 6A FOR EXISTING IMPROVEMENTS
 WITHIN 400' OF THE PROPOSED WELL
 DISTURBANCE.

1917 Brass Cap
 2.0' High
 Lat: 39.644039°
 Long: 108.183539°

1917 Brass Cap
 1.0' High, Pile
 of Stones
 Lat: 39.644039°
 Long: 108.164828°

N00°08'02"W - 2634.58' (Meas.)

2344'

4
N. PARACHUTE
UWF10B-05 K04 596
 Elev. Graded Ground = 8199.1'

N00°18'20"W - 2634.55' (Meas.)

NOTE:
 THE PROPOSED BOTTOM HOLE FOR THIS WELL
 IS LOCATED IN THE NW 1/4 SE 1/4 OF
 SECTION 5, T5S, R96W, 6th P.M. AT A
 DISTANCE OF 2174' FSL 1639' FEL. IT BEARS
 S87°34'11"W 3986.16' FROM THE PROPOSED
 WELL HEAD.

1917 Brass Cap
 2.5' High
 Lat: 39.636808°
 Long: 108.183536°

2335'

NOTE:
 THE PROPERTY LINE IS LOCATED NORTH 2937'
 FROM THE PROPOSED WELL HEAD.

1917 Brass Cap
 2.0' High
 Lat: 39.636814°
 Long: 108.174164°

1917 Brass Cap
 2.3' High
 Lat: 39.636808°
 Long: 108.164797°

S89°50'59"W 2640.58' (Meas.) S89°55'26"W - 2638.66' (Meas.)

Encana OIL & GAS (USA) INC.

Well location, N. PARACHUTE UWF10B-05 K04 596 (SURFACE LOCATION), located as shown in the NE 1/4 SW 1/4 of Section 4, T5S, R96W, 6th P.M., Garfield County, Colorado.

BASIS OF ELEVATION

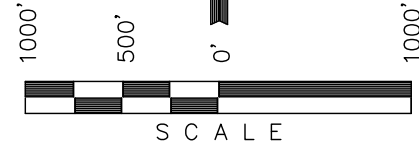
BENCH MARK (H79) LOCATED IN THE NE 1/4 OF SECTION 35, T4S, R98W, 6th P.M. TAKEN FROM THE BULL FORK QUADRANGLE, COLORADO, 7.5 MINUTE SERIES (TOPO GRAPHICAL MAP) PUBLISHED BY THE UNITED STATES DEPARTMENT OF THE INTERIOR, GEOLOGICAL SURVEY. SAID ELEVATION IS MARKED AS BEING 8535 FEET.

BASIS OF BEARINGS

BASIS OF BEARINGS IS A G.P.S. OBSERVATION.

Sheet 111 of 9

LINE TABLE		
LINE	DIRECTION	LENGTH
L1	N89°35'21"E	195.03'
L2	S89°37'21"W	200.90'



CERTIFICATE

THIS IS TO CERTIFY THAT THE ABOVE PLAT WAS PREPARED AND LOCATION AS SHOWN WAS STAKED ON THE GROUND FROM FIELD NOTES OF ACTUAL SURVEYS MADE BY ME OR UNDER MY SUPERVISION AND THAT THE SAME ARE TRUE AND CORRECT TO THE BEST OF MY KNOWLEDGE AND BELIEF.

[Signature]
 17492
 REGISTERED LAND SURVEYOR
 REGISTRATION NO. 17492
 STATE OF COLORADO
 04-20-12

LEGEND:

- └─┘ = 90° SYMBOL
- = PROPOSED WELL HEAD.
- ▲ = SECTION CORNERS LOCATED.
- △ = SECTION CORNERS RE-ESTABLISHED. (Not Set on Ground.)

PDOP = 1.2

NAD 83 (SURFACE LOCATION)	
LATITUDE = 39°38'35.59"	(39.643219)
LONGITUDE = 108°10'30.79"	(108.175219)
NAD 27 (SURFACE LOCATION)	
LATITUDE = 39°38'35.68"	(39.643244)
LONGITUDE = 108°10'28.50"	(108.174583)

UINTAH ENGINEERING & LAND SURVEYING			
85 SOUTH 200 EAST - VERNAL, UTAH 84078			
(435) 789-0917			
SCALE 1" = 1000'	DATE SURVEYED: 04-11-12	DATE DRAWN: 04-17-12	
PARTY B.B. C.C. M.D.	REFERENCES G.L.O. PLAT		
WEATHER COLD	FILE Encana OIL & GAS (USA) INC.		

S 1/4 Cor. Sec. 32
1917 Brass Cap
Lat: 39.651225°
Long: 108.192233°

T5S, R96W, 6th P.M.

SW Cor. Sec. 33
1970 Brass Cap
0.2' High Steel Post, Fence
Lat: 39.651258°
Long: 108.182847°

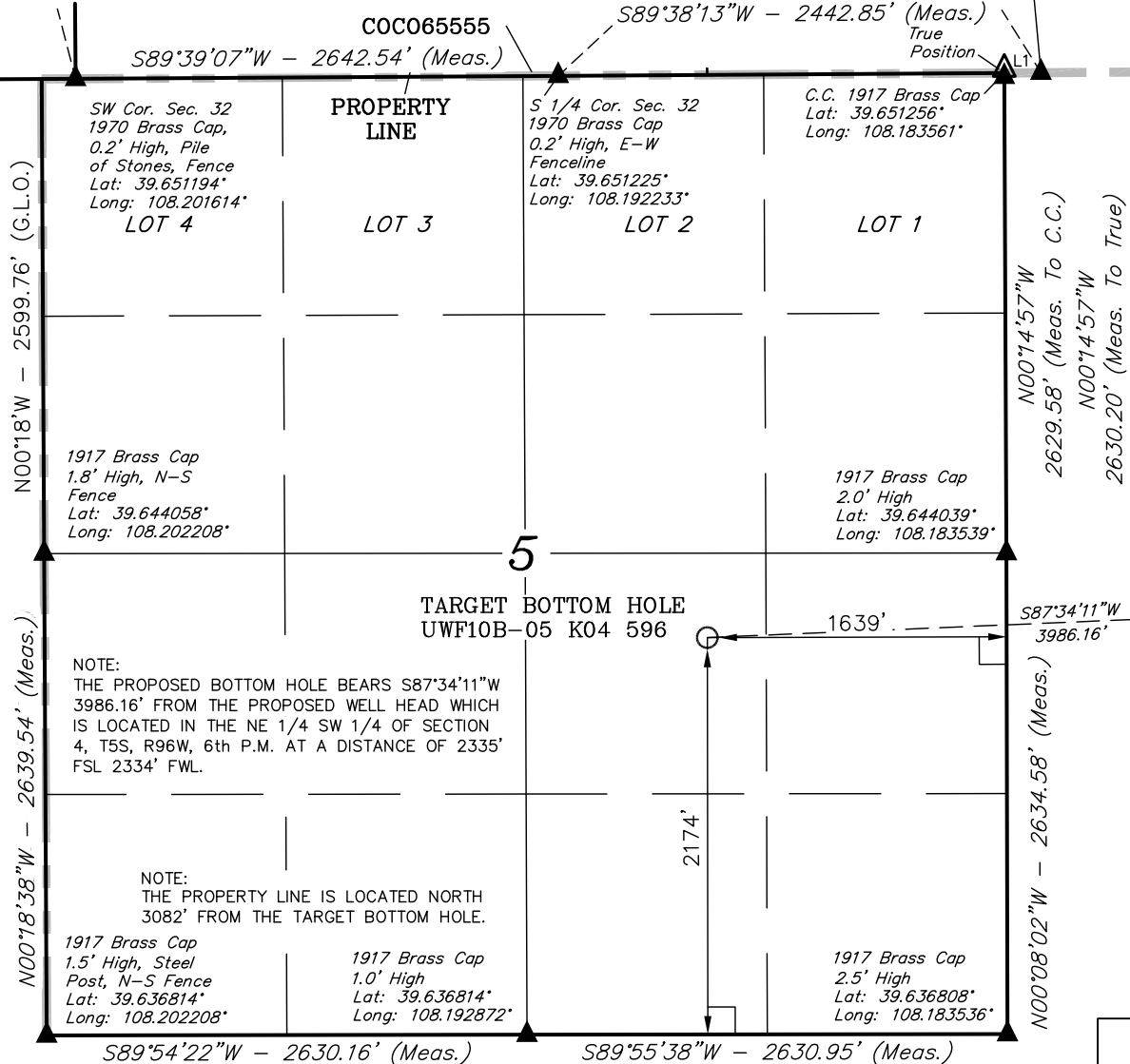
Encana OIL & GAS (USA) INC.

Well location, N. PARACHUTE UWF10B-05 K04 596 (TARGET BOTTOM HOLE), located as shown in the NW 1/4 SE 1/4 of Section 5, T5S, R96W, 6th P.M., Garfield County, Colorado.

S89°40'59"W
2641.17' (Meas.)

Sec. 32

COC065555
S89°39'07"W - 2642.54' (Meas.)
S89°38'13"W - 2442.85' (Meas.)
True Position



BASIS OF ELEVATION

BENCH MARK (H79) LOCATED IN THE NE 1/4 OF SECTION 35, T4S, R98W, 6th P.M. TAKEN FROM THE BULL FORK QUADRANGLE, COLORADO, 7.5 MINUTE SERIES (TOPO GRAPHICAL MAP) PUBLISHED BY THE UNITED STATES DEPARTMENT OF THE INTERIOR, GEOLOGICAL SURVEY. SAID ELEVATION IS MARKED AS BEING 8535 FEET.

BASIS OF BEARINGS

BASIS OF BEARINGS IS A G.P.S. OBSERVATION.

LINE TABLE		
LINE	DIRECTION	LENGTH
L1	S89°37'21"W	200.90'

Sheet 1mm of 9



SURFACE LOCATION
UWF10B-05 K04 596



CERTIFICATE

THIS IS TO CERTIFY THAT THE ABOVE PLAT WAS PREPARED AND LOCATION AS SHOWN WAS STAKED ON THE GROUND FROM FIELD NOTES OF ACTUAL SURVEYS MADE BY ME OR UNDER MY SUPERVISION AND THAT THE SAME ARE TRUE AND CORRECT TO THE BEST OF MY KNOWLEDGE AND BELIEF.

[Signature]
REGISTERED LAND SURVEYOR
REGISTRATION NO. 17492
STATE OF COLORADO
04-20-12

LEGEND:

- = 90° SYMBOL
- = PROPOSED WELL HEAD.
- = SECTION CORNERS LOCATED.
- = SECTION CORNERS RE-ESTABLISHED. (Not Set on Ground.)

NAD 83 (TARGET BOTTOM HOLE)	
LATITUDE = 39°38'34.00"	(39.642778)
LONGITUDE = 108°11'21.68"	(108.189356)
NAD 27 (TARGET BOTTOM HOLE)	
LATITUDE = 39°38'34.09"	(39.642803)
LONGITUDE = 108°11'19.38"	(108.188717)

UINTAH ENGINEERING & LAND SURVEYING 85 SOUTH 200 EAST - VERNAL, UTAH 84078 (435) 789-0917		
SCALE 1" = 1000'	DATE SURVEYED: 04-11-12	DATE DRAWN: 04-17-12
PARTY B.B. C.C. M.D.	REFERENCES G.L.O. PLAT	
WEATHER COLD	FILE Encana OIL & GAS (USA) INC.	