

S 1/4 Cor. Sec. 32
1970 Brass Cap, 0.2' High
E-W Fenceline
Lat: 39.651225°
Long: 108.192233°

T5S, R96W, 6th P.M.

SE Cor. Sec. 33
1953 Brass Cap
0.2' High, Pile
of Stones, Fence
Lat: 39.651322°
Long: 108.164147°

SW Cor. Sec. 33
1970 Brass Cap, 0.2' High
Steel Post, Fenceline
Lat: 39.651258°
Long: 108.182847°

Sec. 33

S89°35'21"W - 2638.68' (Meas.)

C.C. 1917 Brass Cap
0.5' High, Pile of Stones, Fence
Lat: 39.651322°
Long: 108.164839°

S89°37'21"W
2643.75' (Meas.)
True Position L2

S89°40'56"W - 2629.55' (Meas.)

PROPERTY LINE

T4S

S 1/4 Cor. Sec. 33
1970 Brass Cap
0.3' High, Fence Cor.
Lat: 39.651286°
Long: 108.173514°

True Position L1

N00°14'57"W
2629.58' (Meas. To C.C.)
N00°14'57"W
2630.20' (Meas. To True)

NOTE:
SEE SHEET 6A FOR EXISTING IMPROVEMENTS
WITHIN 400' OF THE PROPOSED WELL
DISTURBANCE.

LOT 4

LOT 3

LOT 2

LOT 1

N00°11'23"W
2654.26' (Meas. To C.C.)
N00°11'23"W
2653.24' (Meas. To True)

1917 Brass Cap
2.0' High
Lat: 39.644039°
Long: 108.183539°

1917 Brass Cap
1.0' High, Pile
of Stones
Lat: 39.644039°
Long: 108.164828°

N00°08'02"W - 2634.58' (Meas.)

2393'

N. PARACHUTE
UWF05B-09 K04 596
Elev. Graded Ground = 8198.7'

NOTE:
THE PROPERTY LINE IS LOCATED NORTH 3036'
FROM THE PROPOSED WELL HEAD.

NOTE:
THE PROPOSED BOTTOM HOLE FOR THIS WELL
IS LOCATED IN THE SE 1/4 NE 1/4 OF
SECTION 9, T5S, R96W, 6th P.M. AT A
DISTANCE OF 1848' FNL 1326' FWL. IT BEARS
S14°29'54"W 4220.73' FROM THE PROPOSED
WELL HEAD.

2236'

1917 Brass Cap
2.5' High
Lat: 39.636808°
Long: 108.183536°

1917 Brass Cap
2.0' High
Lat: 39.636814°
Long: 108.174164°

1917 Brass Cap
2.3' High
Lat: 39.636808°
Long: 108.164797°

S89°50'59"W 2640.58' (Meas.) S89°55'26"W - 2638.66' (Meas.)

Encana OIL & GAS (USA) INC.

Well location, N. PARACHUTE UWF05B-09 K04 596 (SURFACE LOCATION), located as shown in the NE 1/4 SW 1/4 of Section 4, T5S, R96W, 6th P.M., Garfield County, Colorado.

BASIS OF ELEVATION

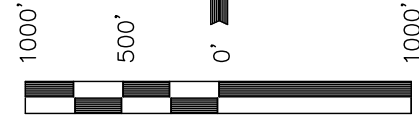
BENCH MARK (H79) LOCATED IN THE NE 1/4 OF SECTION 35, T4S, R98W, 6th P.M. TAKEN FROM THE BULL FORK QUADRANGLE, COLORADO, 7.5 MINUTE SERIES (TOPO GRAPHICAL MAP) PUBLISHED BY THE UNITED STATES DEPARTMENT OF THE INTERIOR, GEOLOGICAL SURVEY. SAID ELEVATION IS MARKED AS BEING 8535 FEET.

BASIS OF BEARINGS

BASIS OF BEARINGS IS A G.P.S. OBSERVATION.

Sheet 1c of 9

LINE TABLE		
LINE	DIRECTION	LENGTH
L1	N89°35'21"E	195.03'
L2	S89°37'21"W	200.90'



CERTIFICATE

THIS IS TO CERTIFY THAT THE ABOVE PLAT WAS PREPARED AND LOCATION AS SHOWN WAS STAKED ON THE GROUND FROM FIELD NOTES OF ACTUAL SURVEYS MADE BY ME OR UNDER MY SUPERVISION AND THAT THE SAME ARE TRUE AND CORRECT TO THE BEST OF MY KNOWLEDGE AND BELIEF.

REGISTERED LAND SURVEYOR
REGISTRATION NO. 17492
STATE OF COLORADO
04-20-12

LEGEND:

- └─┘ = 90° SYMBOL
- = PROPOSED WELL HEAD.
- ▲ = SECTION CORNERS LOCATED.
- △ = SECTION CORNERS RE-ESTABLISHED. (Not Set on Ground.)

PDOP = 1.3

NAD 83 (SURFACE LOCATION)	
LATITUDE = 39°38'34.62"	(39.642950)
LONGITUDE = 108°10'30.15"	(108.175042)
NAD 27 (SURFACE LOCATION)	
LATITUDE = 39°38'34.71"	(39.642975)
LONGITUDE = 108°10'27.86"	(108.174406)

UINTAH ENGINEERING & LAND SURVEYING		
85 SOUTH 200 EAST - VERNAL, UTAH 84078		
(435) 789-0917		
SCALE 1" = 1000'	DATE SURVEYED: 04-11-12	DATE DRAWN: 04-17-12
PARTY B.B. C.C. M.D.	REFERENCES G.L.O. PLAT	
WEATHER COLD	FILE Encana OIL & GAS (USA) INC.	

Encana OIL & GAS (USA) INC.

Well location, N. PARACHUTE UWF05B-09 K04 596 (TARGET BOTTOM HOLE), located as shown in the SE 1/4 NW 1/4 of Section 9, T5S, R96W, 6th P.M., Garfield County, Colorado.

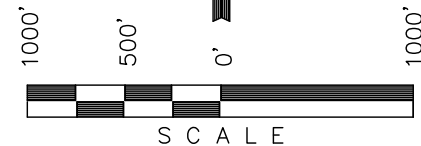
BASIS OF ELEVATION

BENCH MARK (H79) LOCATED IN THE NE 1/4 OF SECTION 35, T4S, R98W, 6th P.M. TAKEN FROM THE BULL FORK QUADRANGLE, COLORADO, 7.5 MINUTE SERIES (TOPO GRAPHICAL MAP) PUBLISHED BY THE UNITED STATES DEPARTMENT OF THE INTERIOR, GEOLOGICAL SURVEY. SAID ELEVATION IS MARKED AS BEING 8535 FEET.

BASIS OF BEARINGS

BASIS OF BEARINGS IS A G.P.S. OBSERVATION.

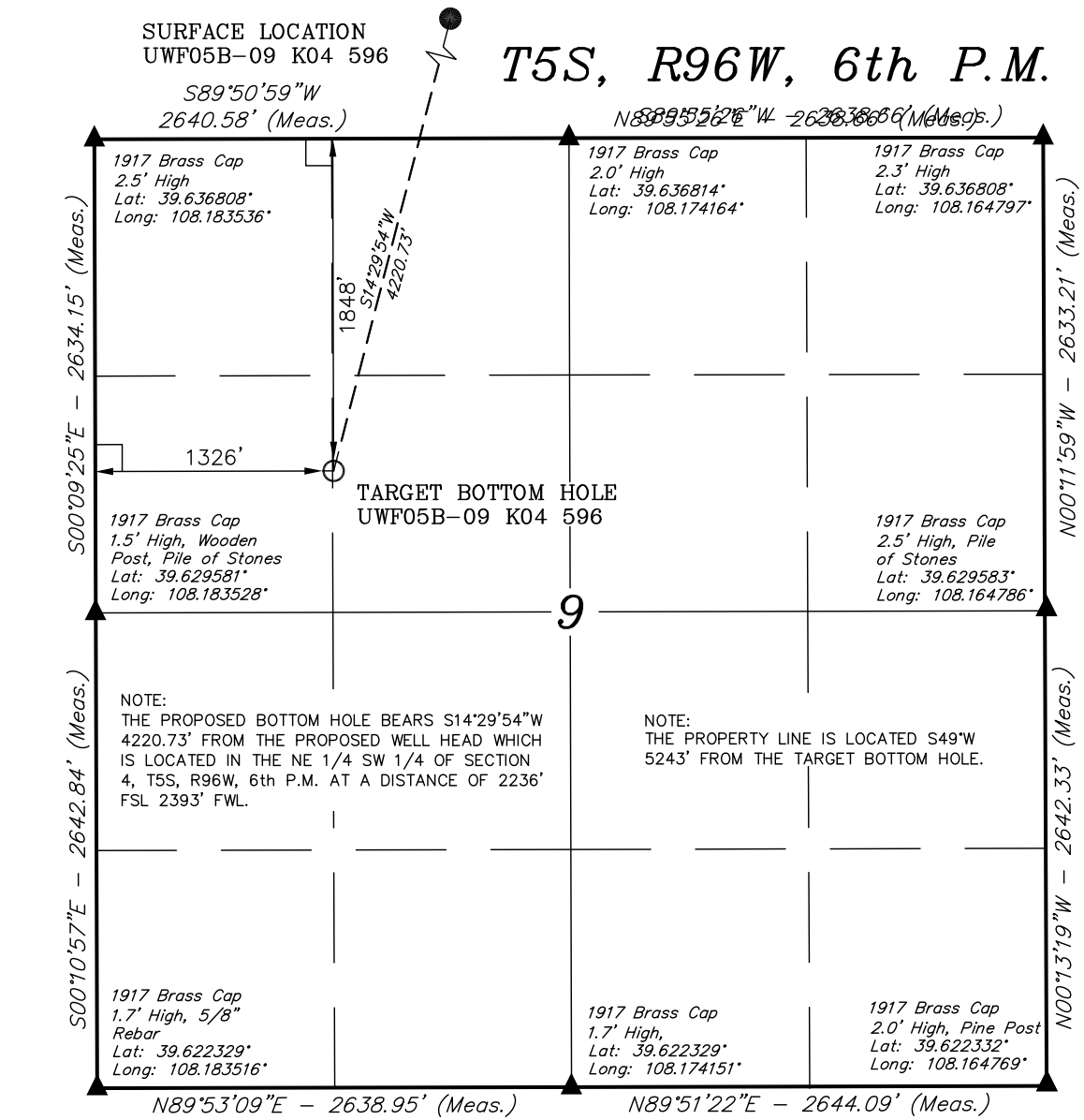
Sheet 1d of 9



CERTIFICATE

THIS IS TO CERTIFY THAT THE ABOVE PLAT WAS PREPARED AND LOCATION AS SHOWN WAS STAKED ON THE GROUND FROM FIELD NOTES OF ACTUAL SURVEYS MADE BY ME OR UNDER MY SUPERVISION AND THAT THE SAME ARE TRUE AND CORRECT TO THE BEST OF MY KNOWLEDGE AND BELIEF.

[Signature]
 REGISTERED LAND SURVEYOR
 REGISTRATION NO. 17492
 STATE OF COLORADO
 04-20-12



LEGEND:

- = 90° SYMBOL
- = PROPOSED WELL HEAD.
- = SECTION CORNERS LOCATED.
- = SECTION CORNERS RE-ESTABLISHED. (Not Set on Ground.)

NAD 83 (TARGET BOTTOM HOLE)	
LATITUDE = 39°37'54.27" (39.631742)	
LONGITUDE = 108°10'43.76" (108.178822)	
NAD 27 (TARGET BOTTOM HOLE)	
LATITUDE = 39°37'54.36" (39.631767)	
LONGITUDE = 108°10'41.47" (108.178186)	

UINTAH ENGINEERING & LAND SURVEYING		
85 SOUTH 200 EAST - VERNAL, UTAH 84078		
(435) 789-0917		
SCALE 1" = 1000'	DATE SURVEYED: 04-11-12	DATE DRAWN: 04-17-12
PARTY B.B. C.C. M.D.	REFERENCES G.L.O. PLAT	
WEATHER COLD	FILE Encana OIL & GAS (USA) INC.	