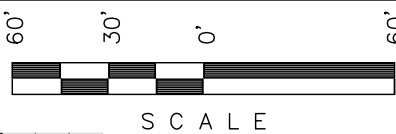


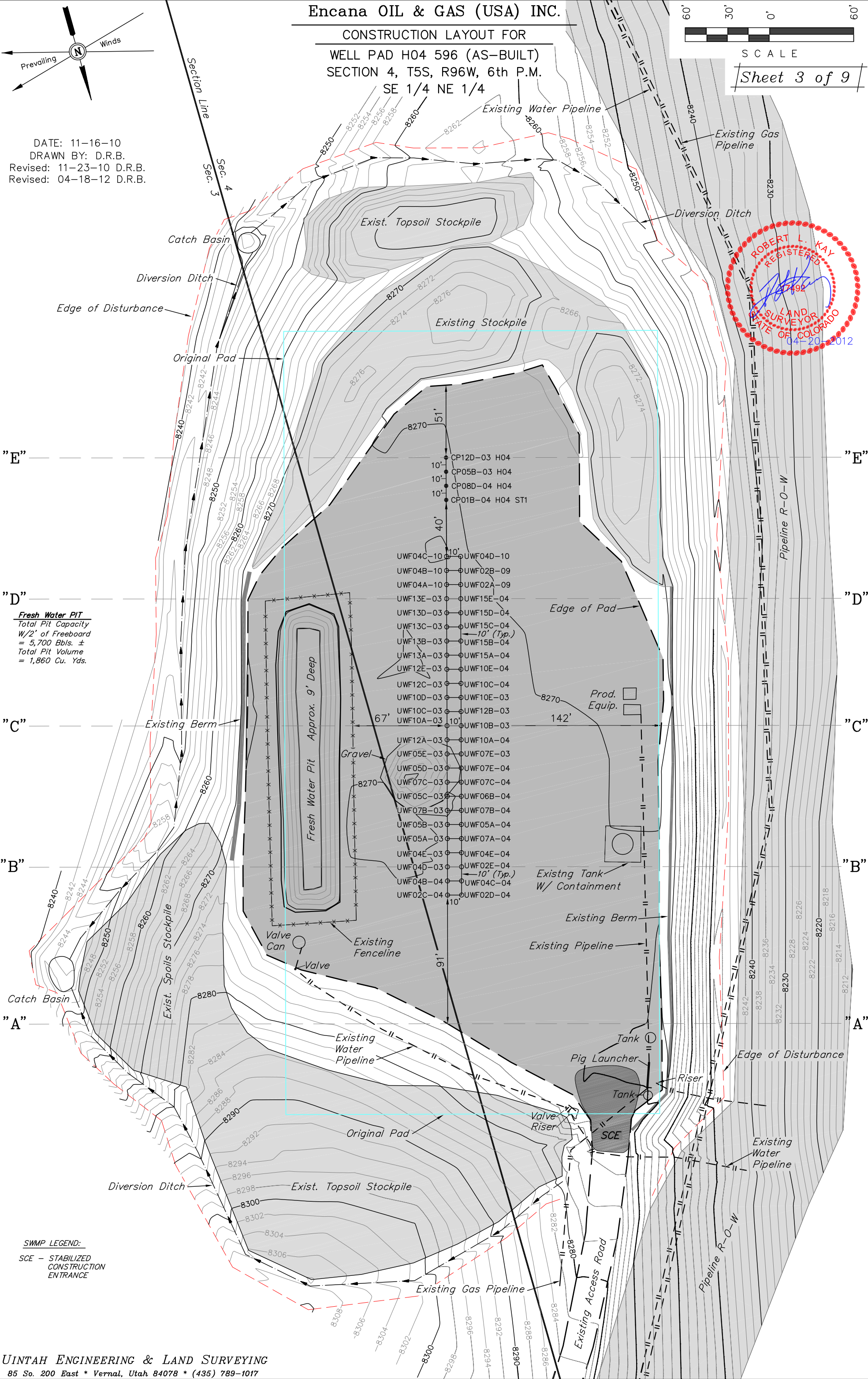
Encana OIL & GAS (USA) INC.

CONSTRUCTION LAYOUT FOR
WELL PAD H04 596 (AS-BUILT)
SECTION 4, T5S, R96W, 6th P.M.
SE 1/4 NE 1/4



Sheet 3 of 9

DATE: 11-16-10
DRAWN BY: D.R.B.
Revised: 11-23-10 D.R.B.
Revised: 04-18-12 D.R.B.



ROBERT L. KAY
REGISTERED
LAND SURVEYOR
STATE OF COLORADO
04-20-2012

Fresh Water PIT
Total Pit Capacity
W/2' of Freeboard
= 5,700 Bbls. ±
Total Pit Volume
= 1,860 Cu. Yds.

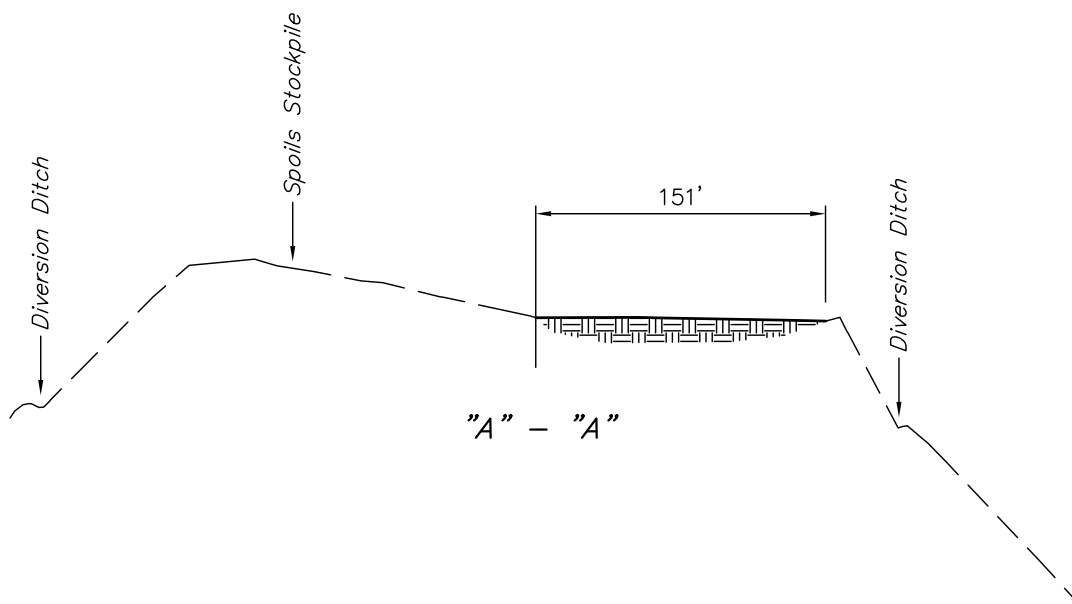
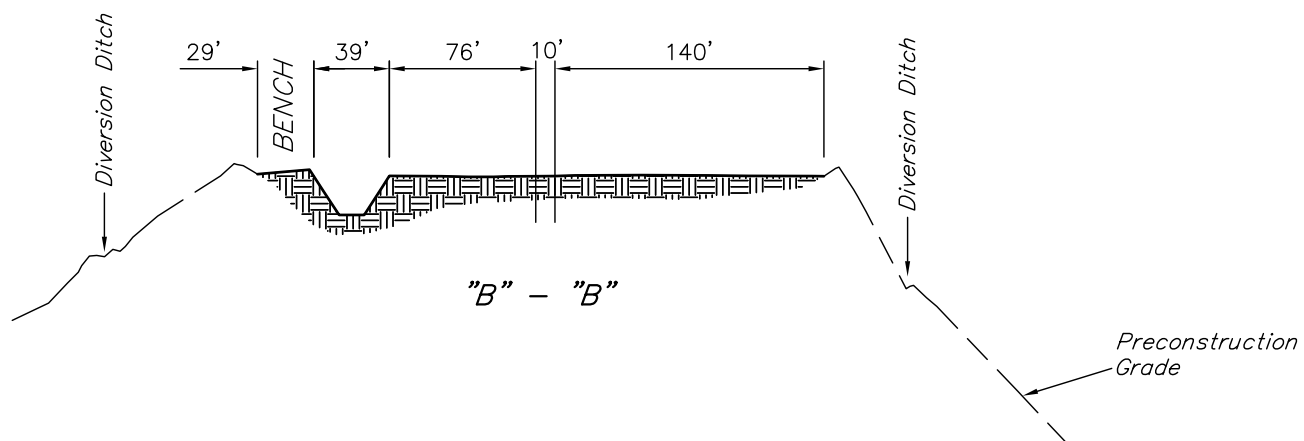
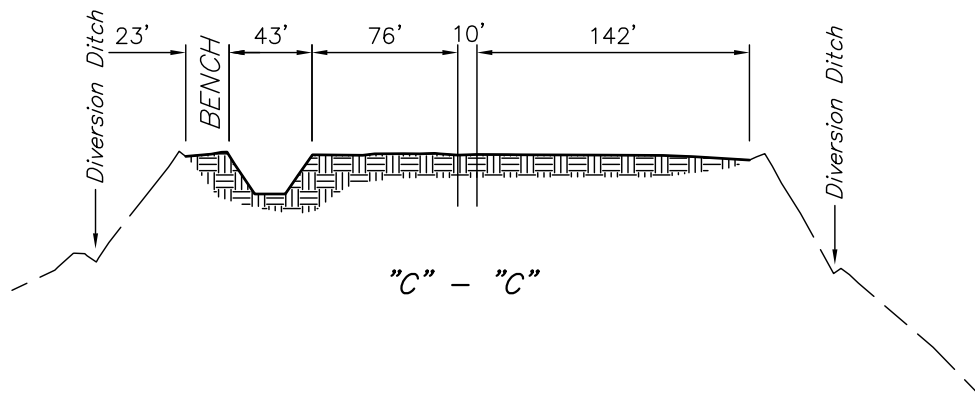
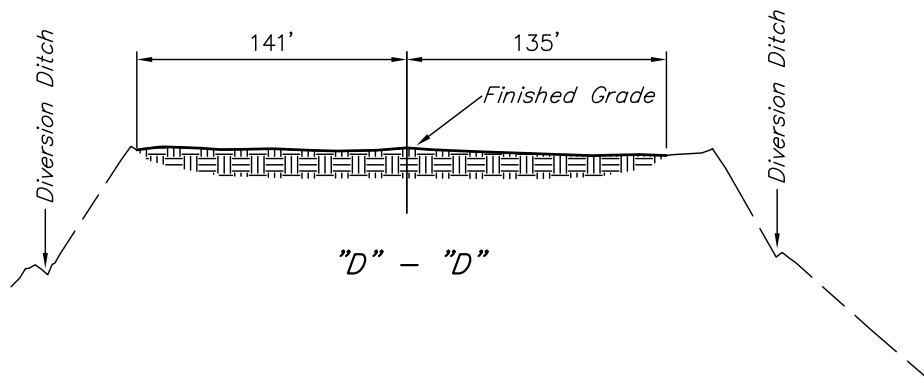
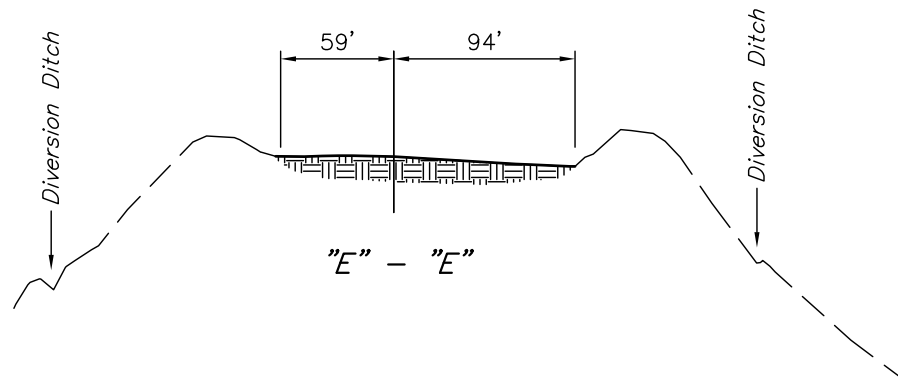
SWMP LEGEND:
SCE - STABILIZED
CONSTRUCTION
ENTRANCE

1" = 40'
X-Section
Scale
1" = 100'

Encana OIL & GAS (USA) INC.
CONSTRUCTION LAYOUT CROSS SECTION FOR
WELL PAD H04 596 (AS-BUILT)
SECTION 4, T5S, R96W, 6th P.M.
SE 1/4 NE 1/4

Sheet 4 of 9

DATE: 11-16-10
DRAWN BY: D.R.B.
Revised: 11-23-10 D.R.B.
Revised: 04-18-12 D.R.B.



SE 1/4 NE 1/4

Sheet 5 of 9

UINTAH ENGINEERING & LAND SURVEYING
85 So. 200 East * Vernal, Utah 84078 * (435) 789-1017

Encana OIL & GAS (USA) INC.

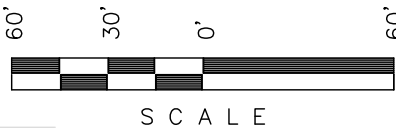
SURFACE DISTURBANCE AREA FOR

WELL PAD H04 596 (AS-BUILT)

SECTION 4, T5S, R96W, 6th P.M.

SE 1/4 NE 1/4 Existing Water Pipeline

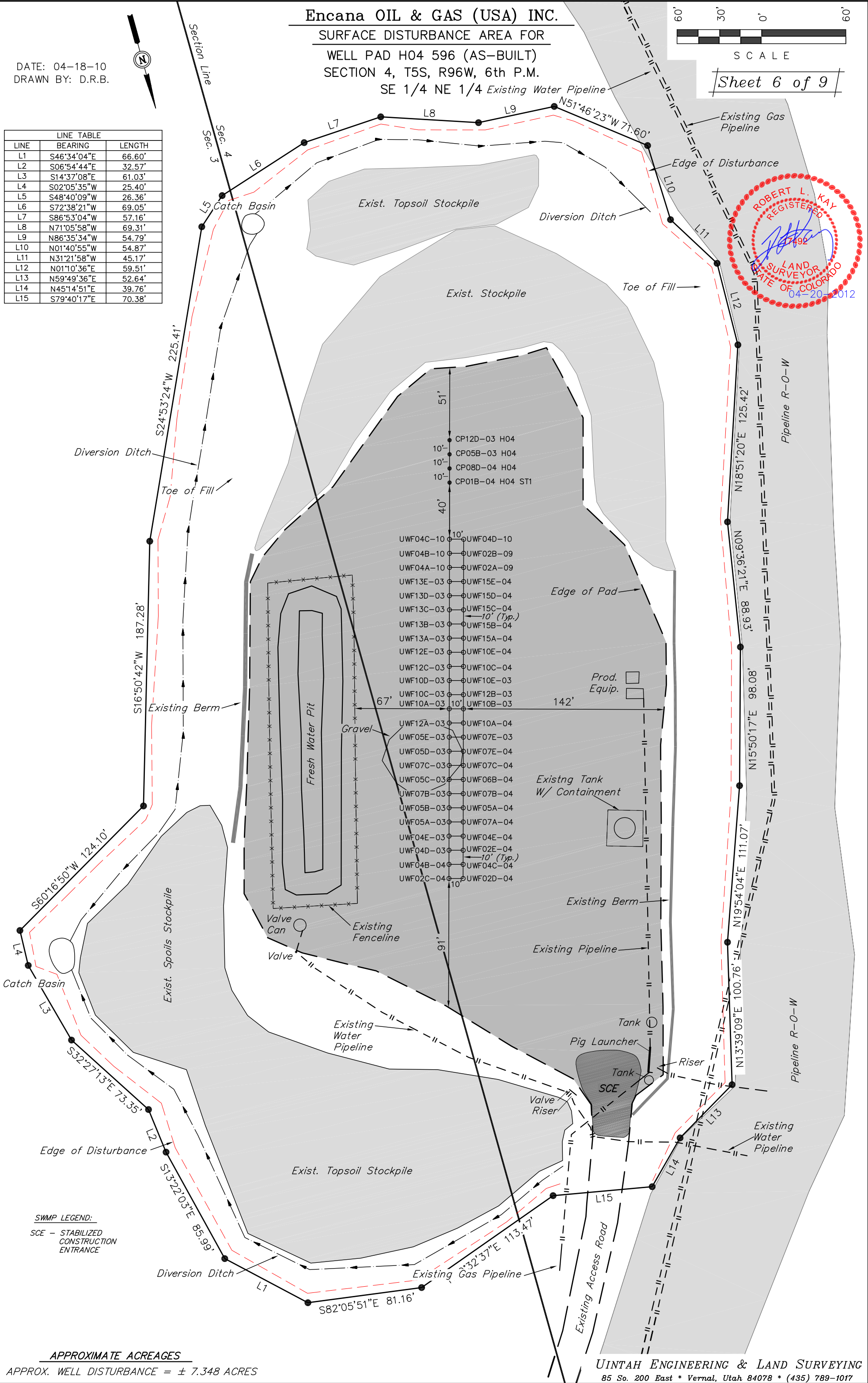
DATE: 04-18-10
DRAWN BY: D.R.B.



SCALE

Sheet 6 of 9

LINE TABLE		
LINE	BEARING	LENGTH
L1	S46°34'04"E	66.60'
L2	S06°54'44"E	32.57'
L3	S14°37'08"E	61.03'
L4	S02°05'35"W	25.40'
L5	S48°40'09"W	26.36'
L6	S72°38'21"W	69.05'
L7	S86°53'04"W	57.16'
L8	N71°05'58"W	69.31'
L9	N86°35'34"W	54.79'
L10	N01°40'55"W	54.87'
L11	N31°21'58"W	45.17'
L12	N01°10'36"E	59.51'
L13	N59°49'36"E	52.64'
L14	N45°14'51"E	39.76'
L15	S79°40'17"E	70.38'



SWMP LEGEND:

SCE - STABILIZED
CONSTRUCTION
ENTRANCE

APPROXIMATE ACREAGES

APPROX. WELL DISTURBANCE = ± 7.348 ACRES

UINTAH ENGINEERING & LAND SURVEYING
85 So. 200 East * Vernal, Utah 84078 * (435) 789-1017