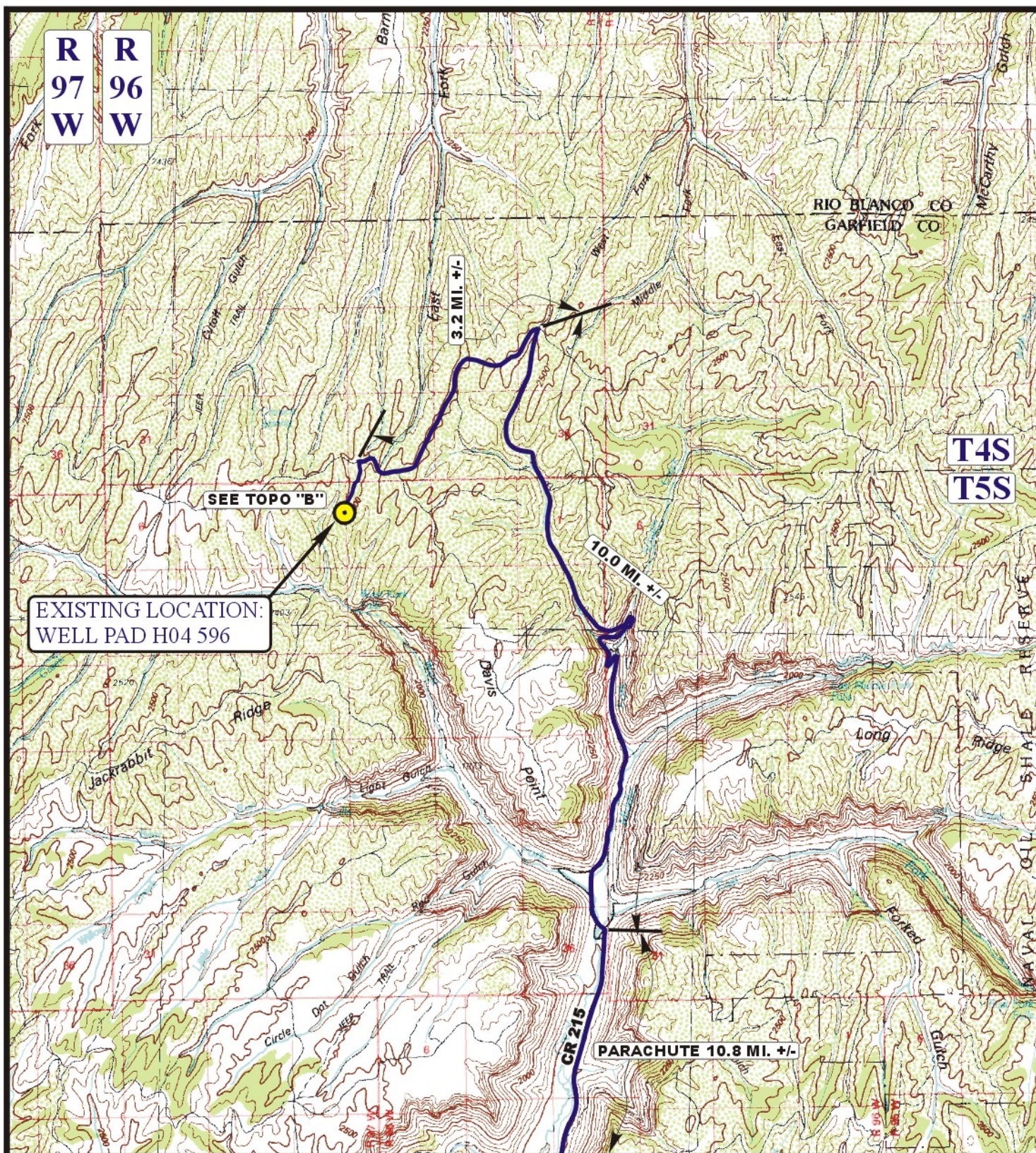


Encana OIL & GAS (USA) INC.
WELL PAD H04 596
SECTION 4, T5S, R96W, 6th P.M.

PROCEED IN A NORTHWESTERLY DIRECTION FROM PARACHUTE, COLORADO ALONG COUNTY ROAD 215 APPROXIMATELY 10.8 MILES TO THE JUNCTION OF THIS ROAD AND AN EXISTING ROAD TO THE NORTHWEST; TURN LEFT AND PROCEED IN A NORTHWESTERLY DIRECTION APPROXIMATELY 10.0 MILES TO THE JUNCTION OF THIS ROAD AND AN EXISTING ROAD SOUTHWEST; TURN LEFT AND PROCEED IN A SOUTHWESTERLY, THEN NORTHWESTERLY, THEN SOUTHWESTERLY, THEN NORTHWESTERLY DIRECTION APPROXIMATELY 3.2 MILES TO THE JUNCTION OF THIS ROAD AND AN EXISTING ROAD TO THE SOUTH; TURN LEFT AND PROCEED IN A SOUTHERLY, DIRECTION APPROXIMATELY 0.3 MILES TO THE JUNCTION OF THIS ROAD AND AN EXISTING ROAD TO THE SOUTHWEST; TURN RIGHT AND PROCEED IN A SOUTHWESTERLY DIRECTION APPROXIMATELY 0.3 MILES TO THE EXISTING LOCATION.

TOTAL DISTANCE FROM PARACHUTE, COLORADO TO THE EXISTING WELL LOCATION IS APPROXIMATELY 24.6 MILES.



LEGEND:

 PROPOSED LOCATION

Encana OIL & GAS (USA) INC.

WELL PAD H04 596
SECTION 4, T5S, R96W, 6th P.M.
SE 1/4 NE 1/4

SHEET 7 of 9



Uintah Engineering & Land Surveying
85 South 200 East Vernal, Utah 84078
(435) 789-1017 * FAX (435) 789-1813

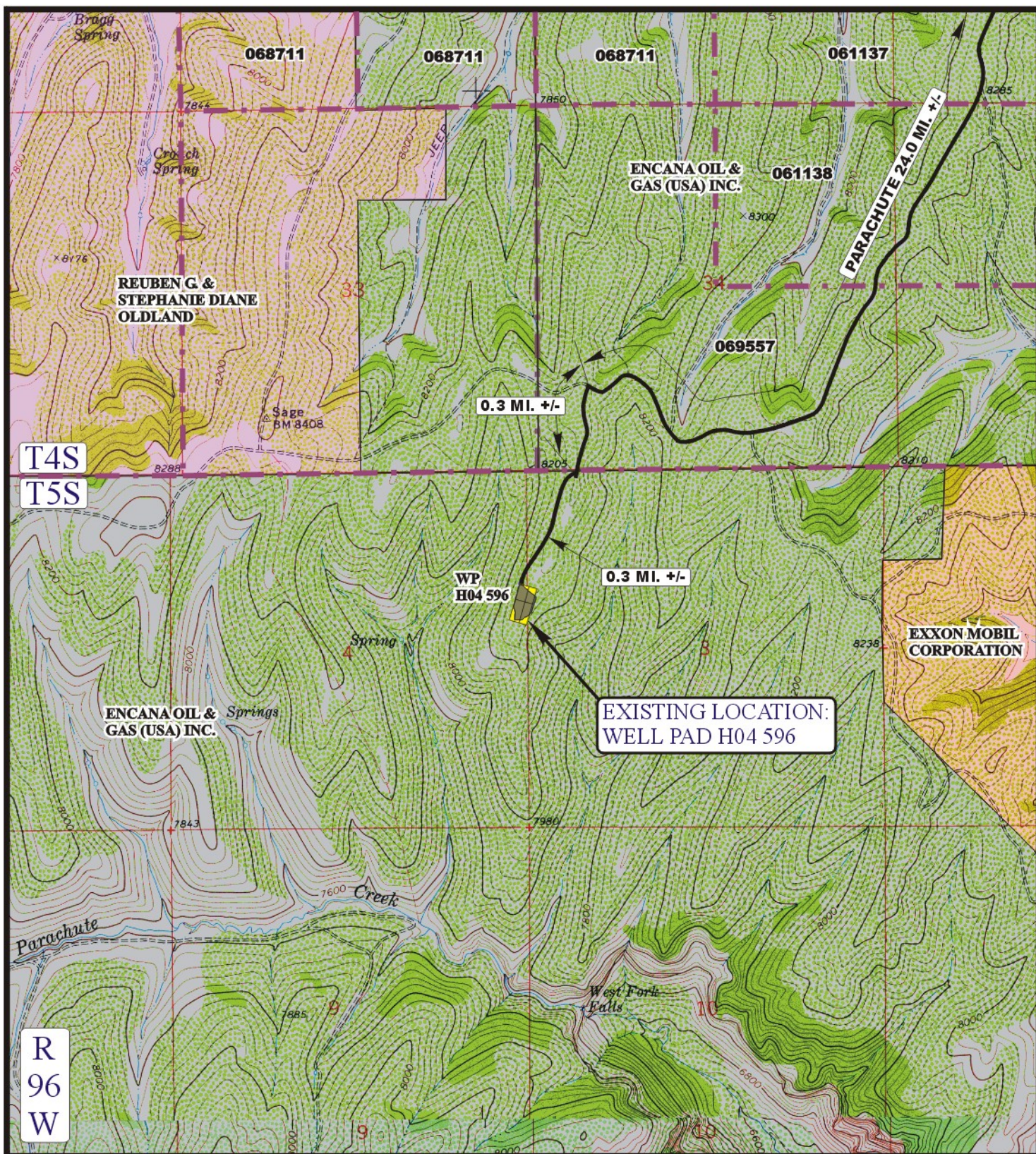


**ACCESS ROAD
MAP**

04 18 12
MONTH DAY YEAR

SCALE: 1:100,000 DRAWN BY: J.L.G. REVISED: 00-00-00





T4S
T5S

R
96
W

LEGEND:

— EXISTING ROAD



Encana OIL & GAS (USA) INC.

WELL PAD H04 596

SECTION 4, T5S, R96W, 6th P.M.

SE 1/4 NE 1/4

SHEET 8 OF 9



Uintah Engineering & Land Surveying
85 South 200 East Vernal, Utah 84078
(435) 789-1017 * FAX (435) 789-1813

**ACCESS ROAD
MAP**

04 18 12
MONTH DAY YEAR

B
TOPO

SCALE: 1" = 2000' DRAWN BY: J.L.G. REVISED: 00-00-00