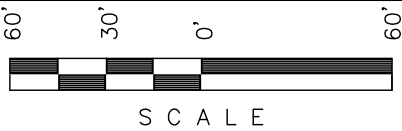


CONSTRUCTION LAYOUT FOR
WELL PAD K04 596 (AS-BUILT)
SECTION 4, T5S, R96W, 6th P.M.
NE 1/4 SW 1/4

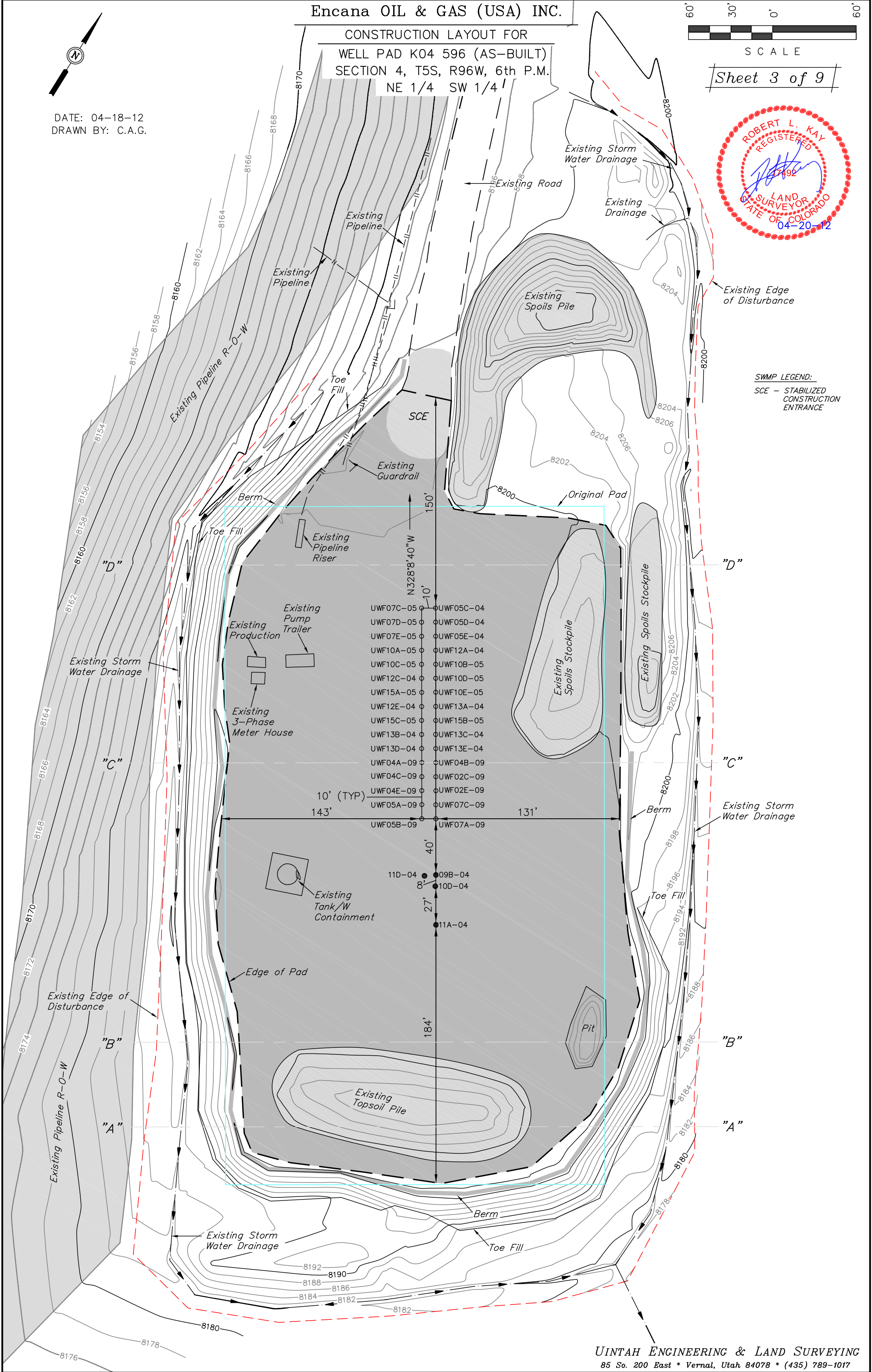
DATE: 04-18-12
DRAWN BY: C.A.G.



Sheet 3 of 9



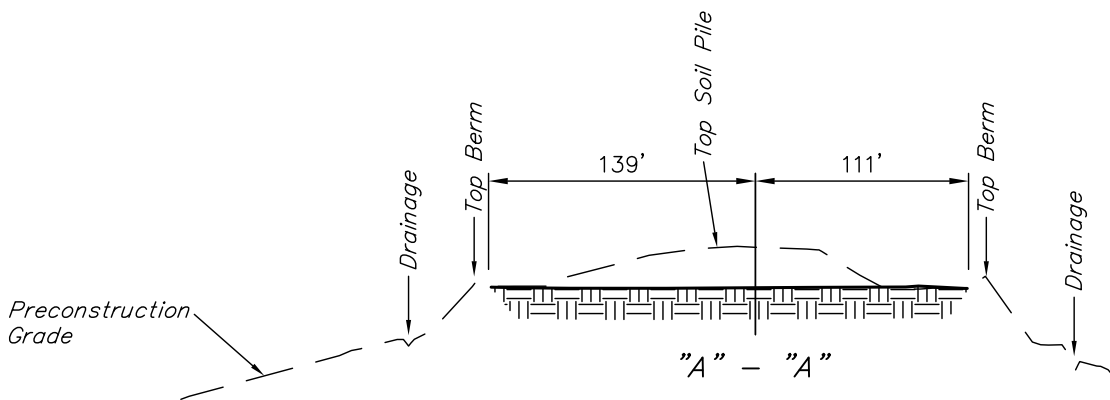
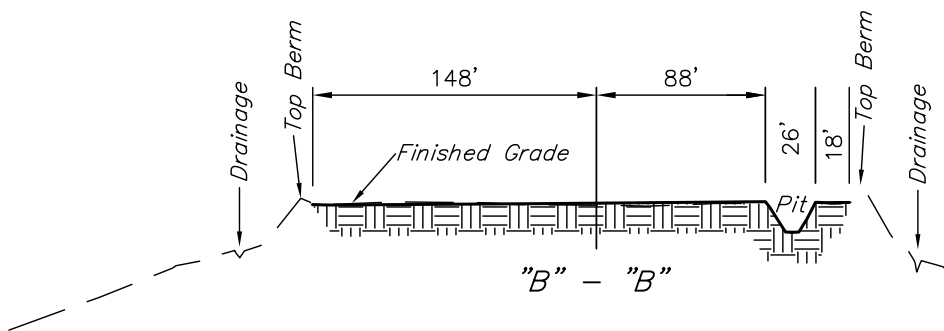
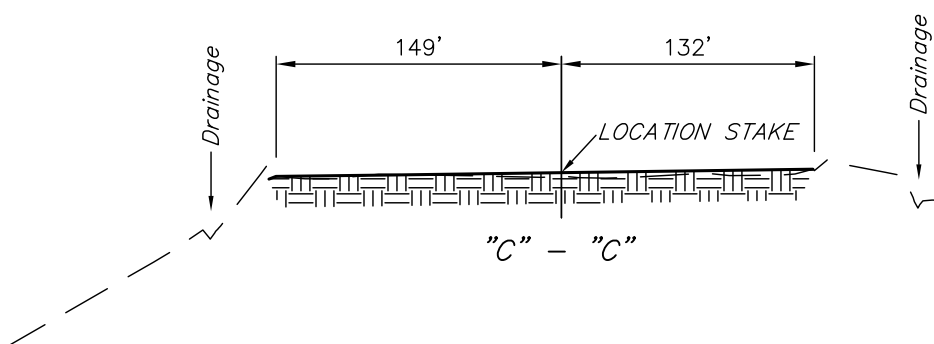
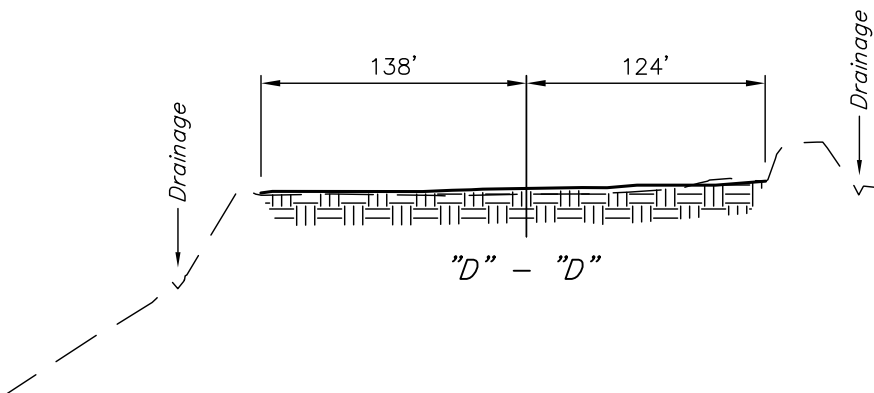
SWAMP LEGEND:
SCE - STABILIZED
CONSTRUCTION
ENTRANCE



Encana OIL & GAS (USA) INC.
CONSTRUCTION LAYOUT CROSS SECTION FOR
WELL PAD K04 596 (AS-BUILT)
SECTION 4, T5S, R96W, 6th P.M.
NE 1/4 SW 1/4

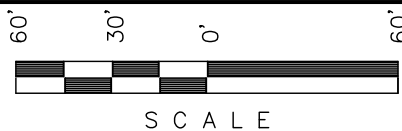
Sheet 4 of 9

1" = 40'
X-Section
Scale
1" = 100'
DATE: 04-18-12
DRAWN BY: C.A.G.



Encana OIL & GAS (USA) INC.

PRODUCTION SCHEMATIC FOR
WELL PAD K04 596 (AS-BUILT)
SECTION 4, T5S, R96W, 6th P.M.
NE 1/4 SW 1/4



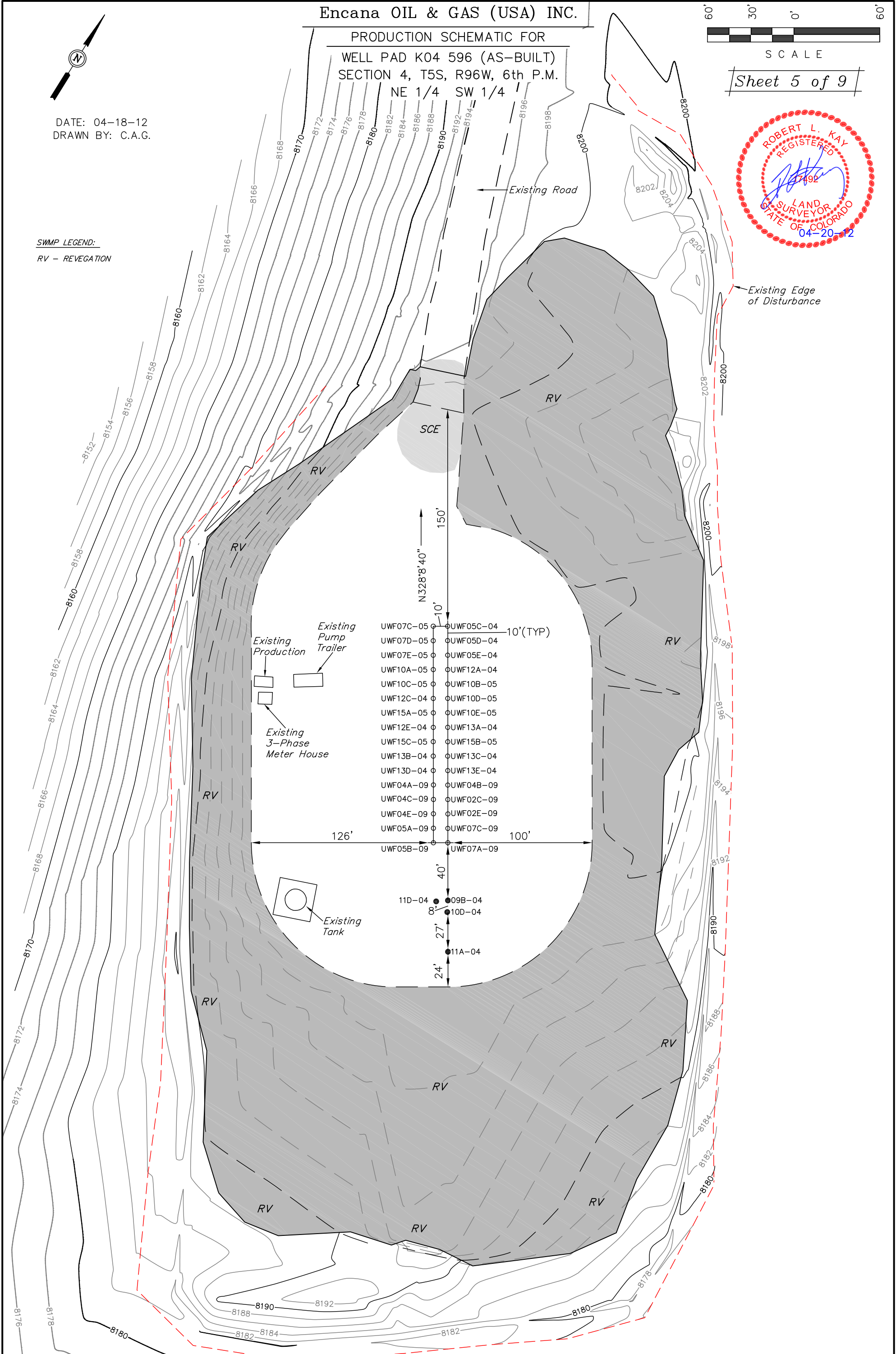
SCALE

Sheet 5 of 9



DATE: 04-18-12
DRAWN BY: C.A.G.

SWMP LEGEND:
RV - REVEGATION

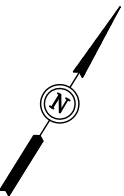


APPROXIMATE ACREAGES

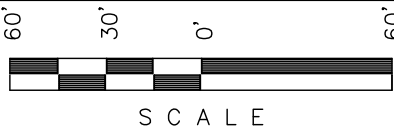
TOTAL RECLAIMED AREA = ± 2.861 ACRES
UN-RECLAIMED AREA = ± 1.726 ACRES

Encana OIL & GAS (USA) INC.

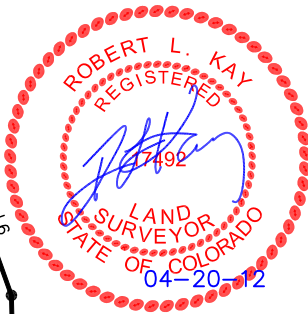
SURFACE DISTURBANCE AREA FOR
WELL PAD K04 596 (AS-BUILT)
SECTION 4, T5S, R96W, 6th P.M.
NE 1/4 SW 1/4



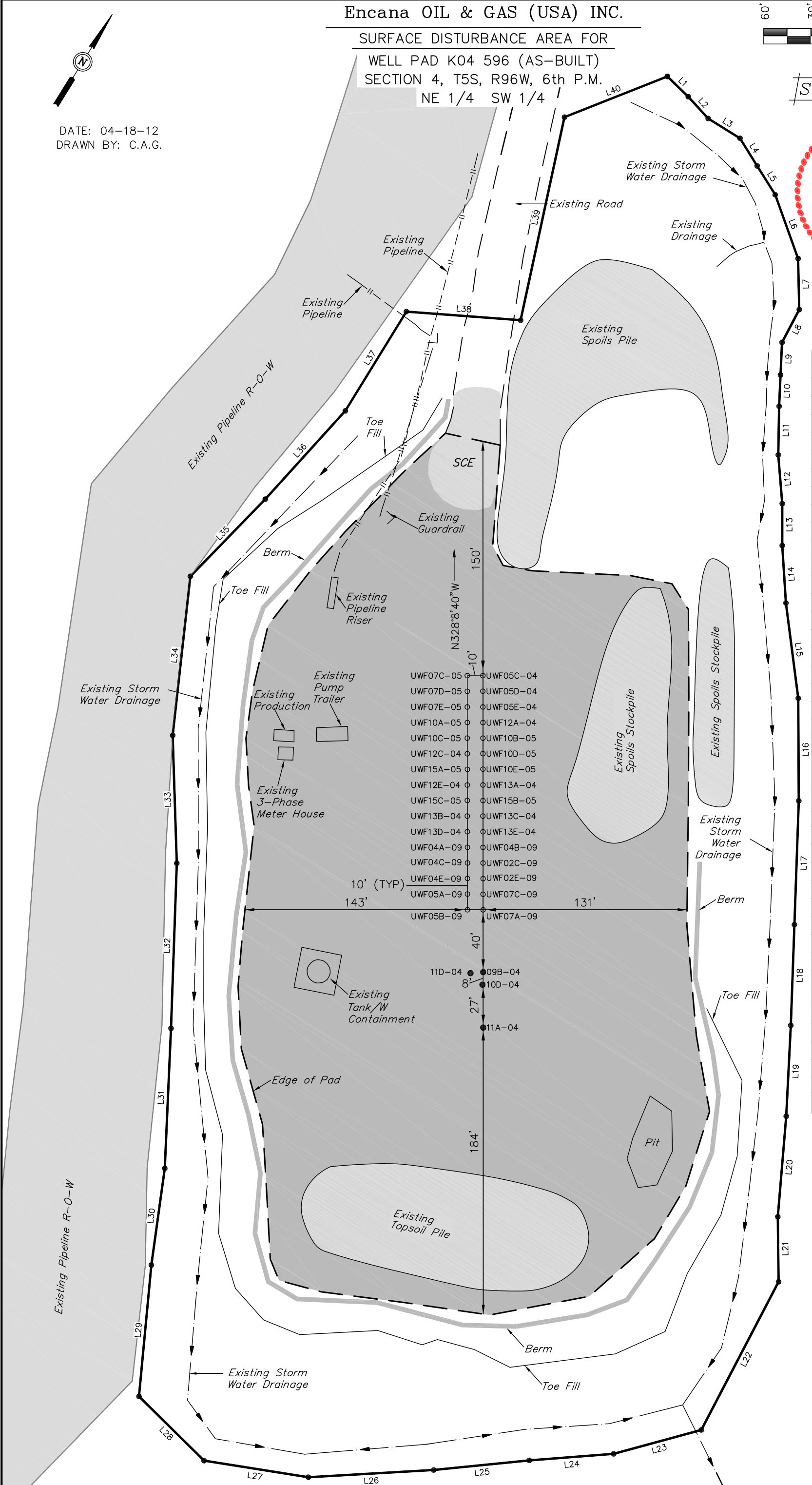
DATE: 04-18-12
DRAWN BY: C.A.G.



Sheet 6 of 9



LINE TABLE		
LINE	DIRECTION	LENGTH
L1	S77°43'38"E	18.67'
L2	S74°15'19"E	18.91'
L3	S89°59'54"E	24.02'
L4	S63°42'21"E	20.84'
L5	S63°54'13"E	21.80'
L6	S51°35'42"E	43.49'
L7	N33°10'32"W	32.69'
L8	S04°07'37"E	23.78'
L9	S29°11'06"E	20.83'
L10	S29°18'36"E	20.14'
L11	S30°51'31"E	31.24'
L12	S36°31'49"E	31.29'
L13	S31°51'41"E	26.89'
L14	S35°31'31"E	36.87'
L15	S39°13'45"E	61.54'
L16	S32°09'20"E	65.78'
L17	S29°50'03"E	79.41'
L18	S29°47'33"E	64.63'
L19	S28°59'31"E	58.32'
L20	S27°02'30"E	64.64'
L21	S32°33'44"E	41.65'
L22	S04°18'14"E	107.15'
L23	S42°53'18"W	58.25'
L24	S53°44'39"W	54.22'
L25	S52°23'29"W	61.66'
L26	S54°50'58"W	80.44'
L27	S67°09'24"W	67.73'
L28	N77°15'44"W	58.63'
L29	N26°27'02"W	84.61'
L30	N23°56'47"W	62.49'
L31	N29°18'16"W	89.92'
L32	N29°50'38"W	105.88'
L33	N33°42'57"W	81.97'
L34	N25°30'21"W	102.60'
L35	N12°18'39"E	68.96'
L36	N10°19'04"E	76.38'
L37	N00°14'36"W	74.71'
L38	N62°27'17"E	73.47'
L39	N19°39'58"W	133.16'
L40	N36°33'49"E	70.96'



APPROXIMATE ACREAGES
APPROX. WELL DISTURBANCE = ± 6.731 ACRES

UINTAH ENGINEERING & LAND SURVEYING
85 So. 200 East * Vernal, Utah 84078 * (435) 789-1017