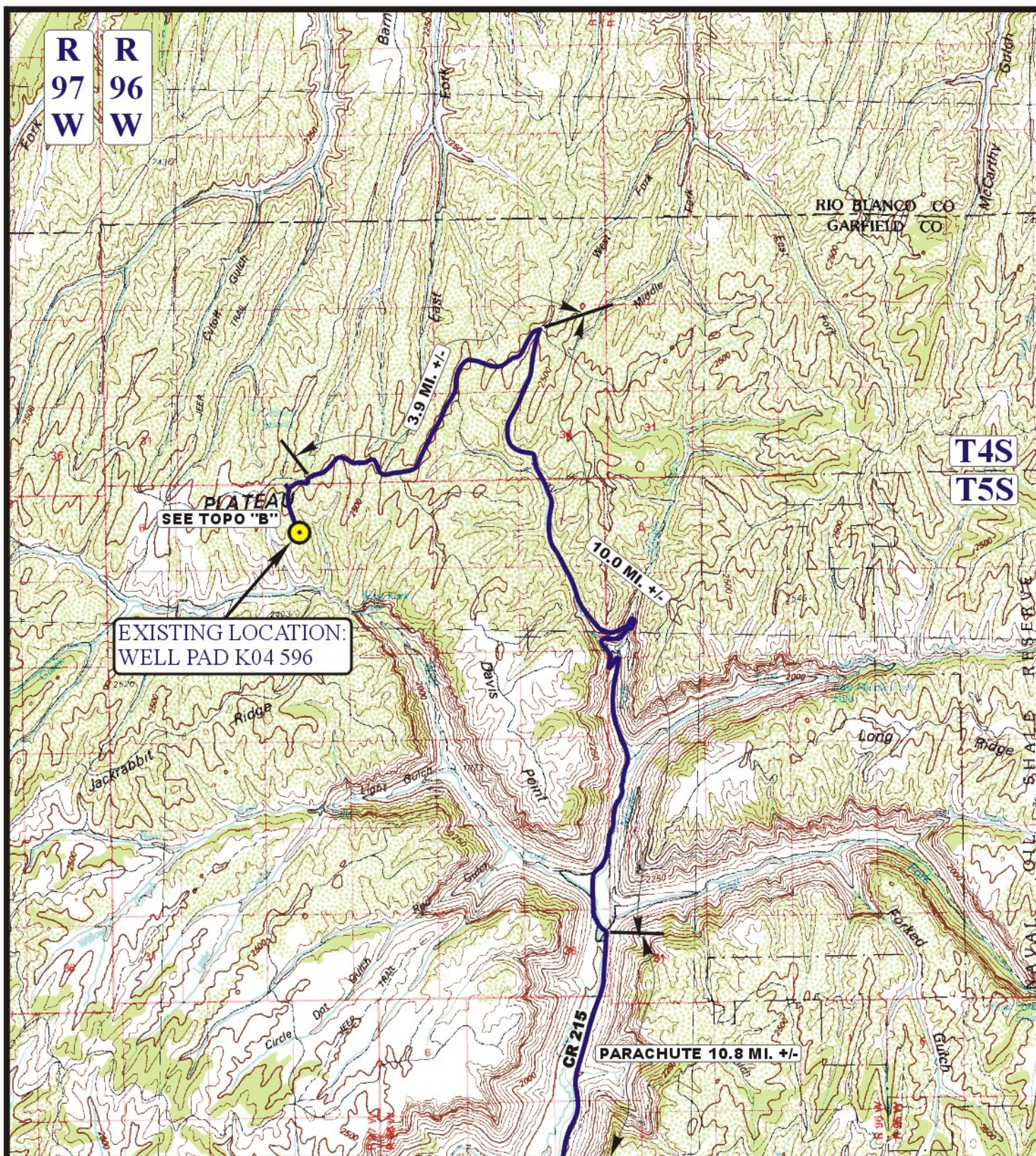


Encana OIL & GAS (USA) INC.
WELL PAD K04 596
SECTION 4, T5S, R96W, 6th P.M.

PROCEED IN A NORTHWESTERLY DIRECTION FROM PARACHUTE, COLORADO ALONG COUNTY ROAD 215 APPROXIMATELY 10.8 MILES TO THE JUNCTION OF THIS ROAD AND AN EXISTING ROAD TO THE NORTHWEST; TURN LEFT AND PROCEED IN A NORTHWESTERLY DIRECTION APPROXIMATELY 10.0 MILES TO THE JUNCTION OF THIS ROAD AND AN EXISTING ROAD SOUTHWEST; TURN LEFT AND PROCEED IN A SOUTHWESTERLY, THEN NORTHWESTERLY, THEN SOUTHWESTERLY, THEN NORTHWESTERLY DIRECTION APPROXIMATELY 3.9 MILES TO THE JUNCTION OF THIS ROAD AND AN EXISTING ROAD TO THE SOUTH; TURN LEFT AND PROCEED IN A SOUTHERLY, THEN SOUTHWESTERLY DIRECTION APPROXIMATELY 0.3 MILES TO THE JUNCTION OF THIS ROAD AND AN EXISTING ROAD TO THE SOUTHWEST; TURN LEFT AND PROCEED IN A SOUTHWESTERLY, SOUTHEASTERLY DIRECTION APPROXIMATELY 0.5 MILES TO THE EXISTING LOCATION, WELL PAD K04-596.

TOTAL DISTANCE FROM PARACHUTE, COLORADO TO THE EXISTING WELL LOCATION IS APPROXIMATELY 25.5 MILES.



LEGEND:

 PROPOSED LOCATION

Encana OIL & GAS (USA) INC.

WELL PAD K04 596
 SECTION 4, T5S, R96W, 6th P.M.
 NE 1/4 SW 1/4 SHEET 7 of 9



Uintah Engineering & Land Surveying
 85 South 200 East Vernal, Utah 84078
 (435) 789-1017 * FAX (435) 789-1813

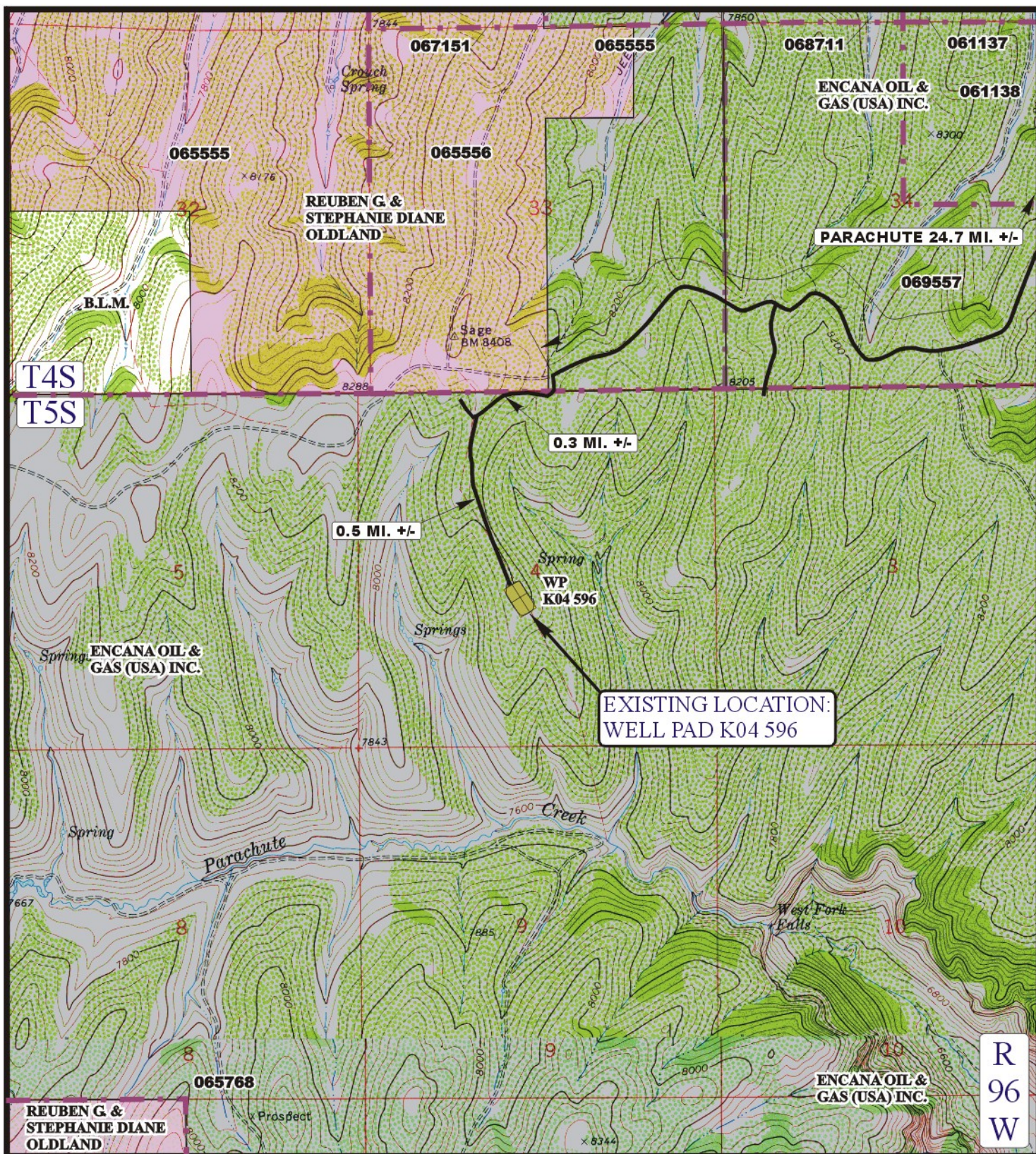


ACCESS ROAD
 MAP

04 18 12
 MONTH DAY YEAR

SCALE: 1:100,000 DRAWN BY: J.L.G. REVISED: 00-00-00





LEGEND:

— EXISTING ROAD



Encana OIL & GAS (USA) INC.

WELL PAD K04 596

SECTION 4, T5S, R96W, 6th P.M.

NE 1/4 SW 1/4

SHEET 8 OF 9



Uintah Engineering & Land Surveying
85 South 200 East Vernal, Utah 84078
(435) 789-1017 * FAX (435) 789-1813

**ACCESS ROAD
MAP**

04 18 12
MONTH DAY YEAR

SCALE: 1" = 2000'

DRAWN BY: J.L.G.

REVISED: 00-00-00

B
TOPO