

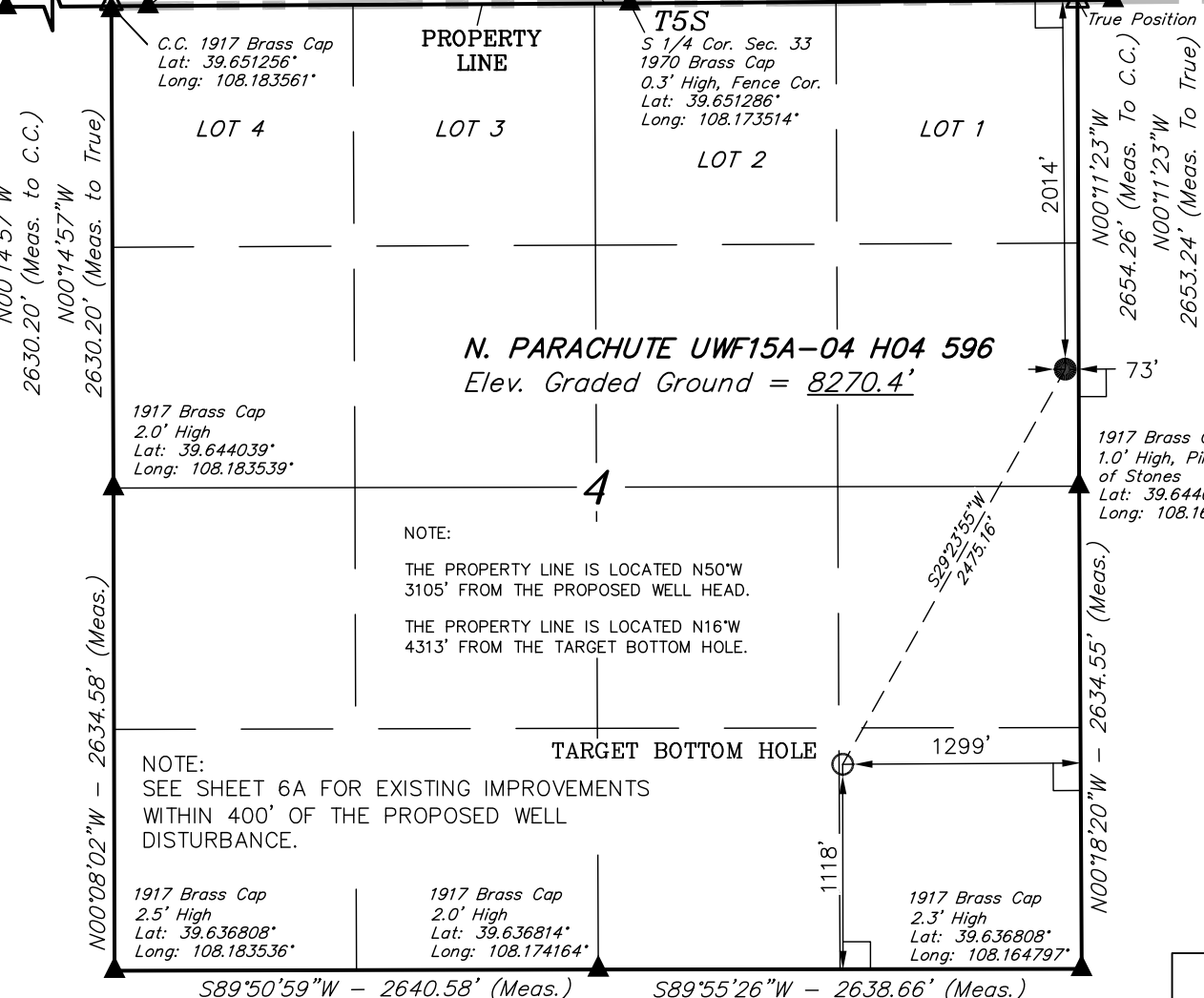
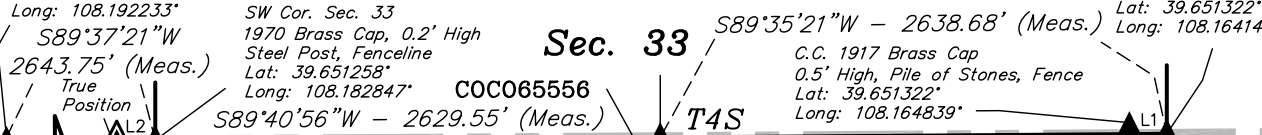
S 1/4 Cor. Sec. 32
1970 Brass Cap, 0.2' High
E-W Fenceline
Lat: 39.651225°
Long: 108.192233°

T5S, R96W, 6th P.M.

SE Cor. Sec. 33
1953 Brass Cap
0.2' High, Pile
of Stones, Fence
Lat: 39.651322°
Long: 108.164147°

Encana OIL & GAS (USA) INC.

Well location, N. PARACHUTE UWF15A-04 H04 596,
located as shown in the SE 1/4 NE 1/4 of
Section 4, T5S, R96W, 6th P.M., Garfield County,
Colorado.



N. PARACHUTE UWF15A-04 H04 596
Elev. Graded Ground = 8270.4'

NOTE:
THE PROPERTY LINE IS LOCATED N50°W
3105' FROM THE PROPOSED WELL HEAD.

THE PROPERTY LINE IS LOCATED N16°W
4313' FROM THE TARGET BOTTOM HOLE.

NOTE:
SEE SHEET 6A FOR EXISTING IMPROVEMENTS
WITHIN 400' OF THE PROPOSED WELL
DISTURBANCE.

BASIS OF ELEVATION

BENCH MARK (H79) LOCATED IN THE NE 1/4 OF SECTION
35, T4S, R98W, 6th P.M. TAKEN FROM THE BULL FORK
QUADRANGLE, COLORADO, 7.5 MINUTE SERIES (TOPO
GRAPHICAL MAP) PUBLISHED BY THE UNITED STATES
DEPARTMENT OF THE INTERIOR, GEOLOGICAL SURVEY.
SAID ELEVATION IS MARKED AS BEING 8535 FEET.

BASIS OF BEARINGS

BASIS OF BEARINGS IS A G.P.S. OBSERVATION.

LINE TABLE		
LINE	DIRECTION	LENGTH
L1	N89°35'21\"E	195.03'
L2	S89°37'21\"W	200.90'



Sheet 1yy of 9



CERTIFICATE

THIS IS TO CERTIFY THAT THE ABOVE PLAT WAS PREPARED AND
LOCATION AS SHOWN WAS STAKED ON THE GROUND FROM FIELD
NOTES OF ACTUAL SURVEYS MADE BY ME OR UNDER MY
SUPERVISION AND THAT THE SAME ARE TRUE AND CORRECT TO
THE BEST OF MY KNOWLEDGE AND BELIEF.

REGISTERED LAND SURVEYOR
REGISTRATION NO. 17492
STATE OF COLORADO
04-20-12

LEGEND:

- = 90° SYMBOL
- = PROPOSED WELL HEAD.
- = SECTION CORNERS LOCATED.
- = SECTION CORNERS RE-ESTABLISHED. (Not Set on Ground.)

NAD 83 (TARGET BOTTOM HOLE)		NAD 83 (SURFACE LOCATION)	
LATITUDE = 39°38'23.57\"	(39.639881)	LATITUDE = 39°38'44.85\"	(39.645792)
LONGITUDE = 108°10'09.91\"	(108.169419)	LONGITUDE = 108°09'54.33\"	(108.165092)
NAD 27 (TARGET BOTTOM HOLE)		NAD 27 (SURFACE LOCATION)	
LATITUDE = 39°38'23.66\"	(39.639906)	LATITUDE = 39°38'44.94\"	(39.645817)
LONGITUDE = 108°10'07.62\"	(108.168783)	LONGITUDE = 108°09'52.04\"	(108.164456)

UINTAH ENGINEERING & LAND SURVEYING			
85 SOUTH 200 EAST - VERNAL, UTAH 84078			
(435) 789-1017			
SCALE 1" = 1000'	DATE SURVEYED: 04-11-12	DATE DRAWN: 04-17-12	
PARTY B.B. C.C. T.B.	REFERENCES G.L.O. PLAT		
WEATHER COLD	FILE Encana OIL & GAS (USA) INC.		