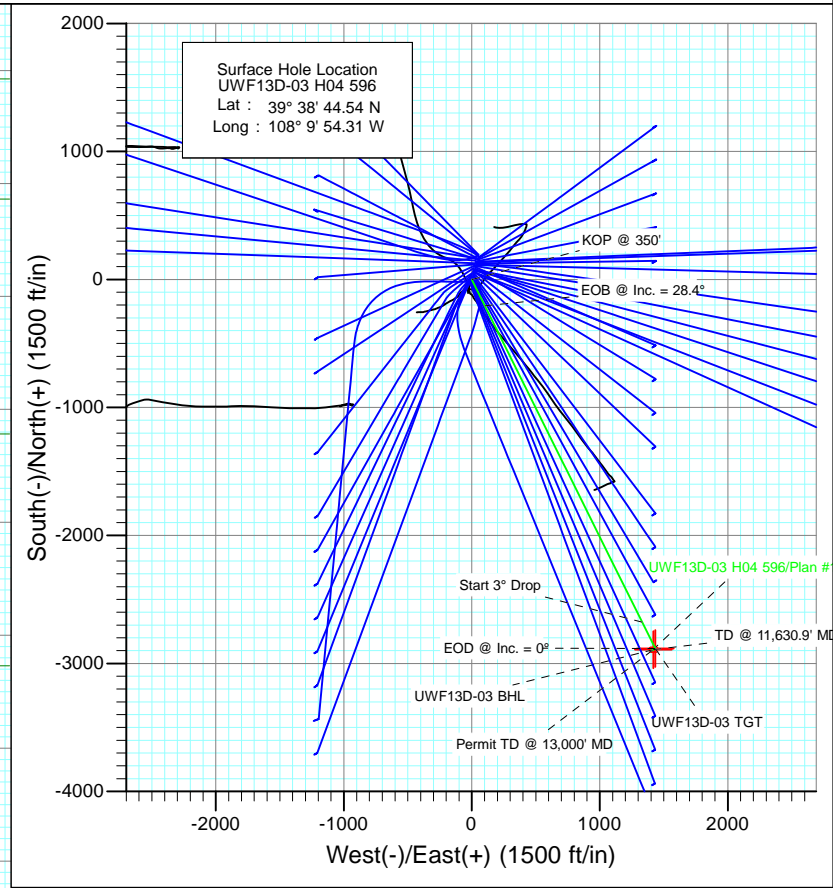


**SECTION DETAILS**

Sec	MD	Inc	Azi	TVD	+N/-S	+E/-W	Dleg	TFace	VSec	Target
1	0.0	0.00	0.00	0.0	0.0	0.0	0.00	0.00	0.0	
2	350.0	0.00	0.00	350.0	0.0	0.0	0.00	0.00	0.0	
3	1296.7	28.40	153.58	1258.4	-205.9	102.3	3.00	153.58	229.9	
4	7098.2	28.40	153.58	6361.6	-2676.9	1330.3	0.00	0.00	2989.2	
5	8044.9	0.00	0.00	7270.0	-2882.8	1432.6	3.00	180.00	3219.0	UWF13D-03 TGT
6	9792.8	0.38	236.51	9018.0	-2886.0	1427.8	0.02	236.51	3219.8	
7	11630.9	0.38	236.51	10856.0	-2892.8	1417.6	0.00	0.00	3221.4	UWF13D-03 BHL
8	13000.0	0.38	236.51	12225.1	-2897.8	1410.0	0.00	0.00	3222.6	



Azimuths to True North  
Magnetic North: 10.34°

Magnetic Field  
Strength: 52205.6snT  
Dip Angle: 65.81°  
Date: 4/19/2012  
Model: IGRF2010

**FORMATION TOP DETAILS**

TVDPath	MDPath	Formation
1063.0	1080.7	A GROOVE
1223.0	1256.7	B GROOVE
1263.0	1301.9	B GROOVE BASE
2073.0	2222.8	GARDEN GULCH
3138.0	3433.5	WASATCH FM
5217.0	5796.9	WASATCH G
7270.0	8044.9	WILLIAMS FORK
10856.0	11630.9	ROLLINS
11115.0	11889.9	COZZETTE
11291.0	12065.9	CORCORAN
11587.0	12361.9	UPPER SEGO

Plan #1  
UWF13D-03 H04 596  
WELL @ 8293.0ft (Original Well Elev)  
North American Datum 1983  
Well UWF13D-03 H04 596, True North

Type TD	Target No Target (Freehand)	Azimuth 154.05	Origin Type Slot	N/S 0.0	E/W 0.0	From TVD 0.0
Name	TVD	+N/-S	+E/-W	Latitude	Longitude	
UWF13D-03 TGT	7270.0	-2882.8	1432.6	39° 38' 16.05 N	108° 9' 36.00 W	
UWF13D-03 BHL	10856.0	-2892.8	1417.6	39° 38' 15.95 N	108° 9' 36.19 W	

# Cathedral Energy Services

## Planning Report

<b>Database:</b>	USA EDM 5000 Multi Users DB	<b>Local Co-ordinate Reference:</b>	Well UWF13D-03 H04 596
<b>Company:</b>	EnCana Oil & Gas (USA) Inc	<b>TVD Reference:</b>	WELL @ 8293.0ft (Original Well Elev)
<b>Project:</b>	North Piceance	<b>MD Reference:</b>	WELL @ 8293.0ft (Original Well Elev)
<b>Site:</b>	H04 Pad	<b>North Reference:</b>	True
<b>Well:</b>	UWF13D-03 H04 596	<b>Survey Calculation Method:</b>	Minimum Curvature
<b>Wellbore:</b>	DD		
<b>Design:</b>	Plan #1		

<b>Project</b>	North Piceance		
<b>Map System:</b>	US State Plane 1983	<b>System Datum:</b>	Mean Sea Level
<b>Geo Datum:</b>	North American Datum 1983		
<b>Map Zone:</b>	Colorado Central Zone		

<b>Site</b>	H04 Pad				
<b>Site Position:</b>		<b>Northing:</b>	1,671,070.85 ft	<b>Latitude:</b>	39° 38' 44.37 N
<b>From:</b>	Lat/Long	<b>Easting:</b>	2,249,607.93 ft	<b>Longitude:</b>	108° 9' 54.50 W
<b>Position Uncertainty:</b>	0.0 ft	<b>Slot Radius:</b>	13.200 in	<b>Grid Convergence:</b>	-1.68 °

<b>Well</b>	UWF13D-03 H04 596					
<b>Well Position</b>	<b>+N/-S</b>	0.0 ft	<b>Northing:</b>	1,671,087.59 ft	<b>Latitude:</b>	39° 38' 44.54 N
	<b>+E/-W</b>	0.0 ft	<b>Easting:</b>	2,249,623.29 ft	<b>Longitude:</b>	108° 9' 54.31 W
<b>Position Uncertainty</b>		0.0 ft	<b>Wellhead Elevation:</b>	ft	<b>Ground Level:</b>	8,260.0 ft

<b>Wellbore</b>	DD				
<b>Magnetics</b>	<b>Model Name</b>	<b>Sample Date</b>	<b>Declination</b>	<b>Dip Angle</b>	<b>Field Strength</b>
	IGRF2010	4/19/2012	(°)	(°)	(nT)
			10.34	65.81	52,206

<b>Design</b>	Plan #1			
<b>Audit Notes:</b>				
<b>Version:</b>	<b>Phase:</b>	PLAN	<b>Tie On Depth:</b>	0.0
<b>Vertical Section:</b>	<b>Depth From (TVD)</b>	<b>+N/-S</b>	<b>+E/-W</b>	<b>Direction</b>
	(ft)	(ft)	(ft)	(°)
	0.0	0.0	0.0	154.05

Plan Sections										
Measured Depth (ft)	Inclination (°)	Azimuth (°)	Vertical Depth (ft)	+N/-S (ft)	+E/-W (ft)	Dogleg Rate (°/100ft)	Build Rate (°/100ft)	Turn Rate (°/100ft)	TFO (°)	Target
0.0	0.00	0.00	0.0	0.0	0.0	0.00	0.00	0.00	0.00	
350.0	0.00	0.00	350.0	0.0	0.0	0.00	0.00	0.00	0.00	
1,296.7	28.40	153.58	1,258.4	-205.9	102.3	3.00	3.00	0.00	153.58	
7,098.2	28.40	153.58	6,361.6	-2,676.9	1,330.3	0.00	0.00	0.00	0.00	
8,044.9	0.00	0.00	7,270.0	-2,882.8	1,432.6	3.00	-3.00	0.00	180.00	UWF13D-03 TGT
9,792.8	0.38	236.51	9,018.0	-2,886.0	1,427.8	0.02	0.02	-7.06	236.51	
11,630.9	0.38	236.51	10,856.0	-2,892.8	1,417.6	0.00	0.00	0.00	0.00	UWF13D-03 BHL
13,000.0	0.38	236.51	12,225.1	-2,897.8	1,410.0	0.00	0.00	0.00	0.00	

# Cathedral Energy Services

## Planning Report

<b>Database:</b>	USA EDM 5000 Multi Users DB	<b>Local Co-ordinate Reference:</b>	Well UWF13D-03 H04 596
<b>Company:</b>	EnCana Oil & Gas (USA) Inc	<b>TVD Reference:</b>	WELL @ 8293.0ft (Original Well Elev)
<b>Project:</b>	North Piceance	<b>MD Reference:</b>	WELL @ 8293.0ft (Original Well Elev)
<b>Site:</b>	H04 Pad	<b>North Reference:</b>	True
<b>Well:</b>	UWF13D-03 H04 596	<b>Survey Calculation Method:</b>	Minimum Curvature
<b>Wellbore:</b>	DD		
<b>Design:</b>	Plan #1		

Planned Survey									
Measured Depth (ft)	Inclination (°)	Azimuth (°)	Vertical Depth (ft)	+N/-S (ft)	+E/-W (ft)	Vertical Section (ft)	Dogleg Rate (°/100ft)	Build Rate (°/100ft)	Comments / Formations
0.0	0.00	0.00	0.0	0.0	0.0	0.0	0.00	0.00	
100.0	0.00	0.00	100.0	0.0	0.0	0.0	0.00	0.00	
200.0	0.00	0.00	200.0	0.0	0.0	0.0	0.00	0.00	
300.0	0.00	0.00	300.0	0.0	0.0	0.0	0.00	0.00	
350.0	0.00	0.00	350.0	0.0	0.0	0.0	0.00	0.00	KOP @ 350'
400.0	1.50	153.58	400.0	-0.6	0.3	0.7	3.00	3.00	
500.0	4.50	153.58	499.8	-5.3	2.6	5.9	3.00	3.00	
600.0	7.50	153.58	599.3	-14.6	7.3	16.3	3.00	3.00	
700.0	10.50	153.58	698.0	-28.6	14.2	32.0	3.00	3.00	
800.0	13.50	153.58	795.8	-47.3	23.5	52.8	3.00	3.00	
900.0	16.50	153.58	892.4	-70.4	35.0	78.6	3.00	3.00	
1,000.0	19.50	153.58	987.5	-98.1	48.8	109.5	3.00	3.00	
1,080.7	21.92	153.58	1,063.0	-123.7	61.5	138.1	3.00	3.00	A GROOVE
1,100.0	22.50	153.58	1,080.9	-130.2	64.7	145.4	3.00	3.00	
1,200.0	25.50	153.58	1,172.2	-166.6	82.8	186.0	3.00	3.00	
1,256.7	27.20	153.58	1,223.0	-189.1	94.0	211.2	3.00	3.00	B GROOVE
1,296.7	28.40	153.58	1,258.4	-205.9	102.3	229.9	3.00	3.00	EOB @ Inc. = 28.4°
1,300.0	28.40	153.58	1,261.3	-207.3	103.0	231.4	0.00	0.00	
1,301.9	28.40	153.58	1,263.0	-208.1	103.4	232.3	0.00	0.00	B GROOVE BASE
1,400.0	28.40	153.58	1,349.3	-249.9	124.2	279.0	0.00	0.00	
1,500.0	28.40	153.58	1,437.2	-292.4	145.3	326.6	0.00	0.00	
1,600.0	28.40	153.58	1,525.2	-335.0	166.5	374.1	0.00	0.00	
1,700.0	28.40	153.58	1,613.2	-377.6	187.7	421.7	0.00	0.00	
1,800.0	28.40	153.58	1,701.1	-420.2	208.8	469.2	0.00	0.00	
1,900.0	28.40	153.58	1,789.1	-462.8	230.0	516.8	0.00	0.00	
2,000.0	28.40	153.58	1,877.1	-505.4	251.2	564.4	0.00	0.00	
2,100.0	28.40	153.58	1,965.0	-548.0	272.3	611.9	0.00	0.00	
2,200.0	28.40	153.58	2,053.0	-590.6	293.5	659.5	0.00	0.00	
2,222.8	28.40	153.58	2,073.0	-600.3	298.3	670.3	0.00	0.00	GARDEN GULCH
2,300.0	28.40	153.58	2,140.9	-633.2	314.7	707.1	0.00	0.00	
2,400.0	28.40	153.58	2,228.9	-675.8	335.8	754.6	0.00	0.00	
2,500.0	28.40	153.58	2,316.9	-718.4	357.0	802.2	0.00	0.00	
2,600.0	28.40	153.58	2,404.8	-761.0	378.2	849.7	0.00	0.00	
2,700.0	28.40	153.58	2,492.8	-803.6	399.3	897.3	0.00	0.00	
2,800.0	28.40	153.58	2,580.8	-846.2	420.5	944.9	0.00	0.00	
2,900.0	28.40	153.58	2,668.7	-888.8	441.7	992.4	0.00	0.00	
3,000.0	28.40	153.58	2,756.7	-931.4	462.8	1,040.0	0.00	0.00	
3,100.0	28.40	153.58	2,844.7	-974.0	484.0	1,087.6	0.00	0.00	
3,200.0	28.40	153.58	2,932.6	-1,016.6	505.2	1,135.1	0.00	0.00	
3,300.0	28.40	153.58	3,020.6	-1,059.1	526.3	1,182.7	0.00	0.00	
3,400.0	28.40	153.58	3,108.6	-1,101.7	547.5	1,230.2	0.00	0.00	
3,433.5	28.40	153.58	3,138.0	-1,116.0	554.6	1,246.2	0.00	0.00	WASATCH FM
3,500.0	28.40	153.58	3,196.5	-1,144.3	568.7	1,277.8	0.00	0.00	
3,600.0	28.40	153.58	3,284.5	-1,186.9	589.8	1,325.4	0.00	0.00	
3,700.0	28.40	153.58	3,372.4	-1,229.5	611.0	1,372.9	0.00	0.00	
3,800.0	28.40	153.58	3,460.4	-1,272.1	632.2	1,420.5	0.00	0.00	
3,900.0	28.40	153.58	3,548.4	-1,314.7	653.3	1,468.1	0.00	0.00	
4,000.0	28.40	153.58	3,636.3	-1,357.3	674.5	1,515.6	0.00	0.00	
4,100.0	28.40	153.58	3,724.3	-1,399.9	695.7	1,563.2	0.00	0.00	
4,200.0	28.40	153.58	3,812.3	-1,442.5	716.8	1,610.7	0.00	0.00	
4,300.0	28.40	153.58	3,900.2	-1,485.1	738.0	1,658.3	0.00	0.00	
4,400.0	28.40	153.58	3,988.2	-1,527.7	759.2	1,705.9	0.00	0.00	

# Cathedral Energy Services

## Planning Report

<b>Database:</b>	USA EDM 5000 Multi Users DB	<b>Local Co-ordinate Reference:</b>	Well UWF13D-03 H04 596
<b>Company:</b>	EnCana Oil & Gas (USA) Inc	<b>TVD Reference:</b>	WELL @ 8293.0ft (Original Well Elev)
<b>Project:</b>	North Piceance	<b>MD Reference:</b>	WELL @ 8293.0ft (Original Well Elev)
<b>Site:</b>	H04 Pad	<b>North Reference:</b>	True
<b>Well:</b>	UWF13D-03 H04 596	<b>Survey Calculation Method:</b>	Minimum Curvature
<b>Wellbore:</b>	DD		
<b>Design:</b>	Plan #1		

Planned Survey									
Measured Depth (ft)	Inclination (°)	Azimuth (°)	Vertical Depth (ft)	+N/-S (ft)	+E/-W (ft)	Vertical Section (ft)	Dogleg Rate (°/100ft)	Build Rate (°/100ft)	Comments / Formations
4,500.0	28.40	153.58	4,076.2	-1,570.3	780.3	1,753.4	0.00	0.00	
4,600.0	28.40	153.58	4,164.1	-1,612.9	801.5	1,801.0	0.00	0.00	
4,700.0	28.40	153.58	4,252.1	-1,655.5	822.7	1,848.5	0.00	0.00	
4,800.0	28.40	153.58	4,340.0	-1,698.1	843.8	1,896.1	0.00	0.00	
4,900.0	28.40	153.58	4,428.0	-1,740.7	865.0	1,943.7	0.00	0.00	
5,000.0	28.40	153.58	4,516.0	-1,783.2	886.2	1,991.2	0.00	0.00	
5,100.0	28.40	153.58	4,603.9	-1,825.8	907.3	2,038.8	0.00	0.00	
5,200.0	28.40	153.58	4,691.9	-1,868.4	928.5	2,086.4	0.00	0.00	
5,300.0	28.40	153.58	4,779.9	-1,911.0	949.7	2,133.9	0.00	0.00	
5,400.0	28.40	153.58	4,867.8	-1,953.6	970.9	2,181.5	0.00	0.00	
5,500.0	28.40	153.58	4,955.8	-1,996.2	992.0	2,229.0	0.00	0.00	
5,600.0	28.40	153.58	5,043.8	-2,038.8	1,013.2	2,276.6	0.00	0.00	
5,700.0	28.40	153.58	5,131.7	-2,081.4	1,034.4	2,324.2	0.00	0.00	
5,796.9	28.40	153.58	5,217.0	-2,122.7	1,054.9	2,370.3	0.00	0.00	WASATCH G
5,800.0	28.40	153.58	5,219.7	-2,124.0	1,055.5	2,371.7	0.00	0.00	
5,900.0	28.40	153.58	5,307.7	-2,166.6	1,076.7	2,419.3	0.00	0.00	
6,000.0	28.40	153.58	5,395.6	-2,209.2	1,097.9	2,466.9	0.00	0.00	
6,100.0	28.40	153.58	5,483.6	-2,251.8	1,119.0	2,514.4	0.00	0.00	
6,200.0	28.40	153.58	5,571.5	-2,294.4	1,140.2	2,562.0	0.00	0.00	
6,300.0	28.40	153.58	5,659.5	-2,337.0	1,161.4	2,609.5	0.00	0.00	
6,400.0	28.40	153.58	5,747.5	-2,379.6	1,182.5	2,657.1	0.00	0.00	
6,500.0	28.40	153.58	5,835.4	-2,422.2	1,203.7	2,704.7	0.00	0.00	
6,600.0	28.40	153.58	5,923.4	-2,464.8	1,224.9	2,752.2	0.00	0.00	
6,700.0	28.40	153.58	6,011.4	-2,507.4	1,246.0	2,799.8	0.00	0.00	
6,800.0	28.40	153.58	6,099.3	-2,549.9	1,267.2	2,847.4	0.00	0.00	
6,900.0	28.40	153.58	6,187.3	-2,592.5	1,288.4	2,894.9	0.00	0.00	
7,000.0	28.40	153.58	6,275.3	-2,635.1	1,309.5	2,942.5	0.00	0.00	
7,098.2	28.40	153.58	6,361.6	-2,676.9	1,330.3	2,989.2	0.00	0.00	Start 3° Drop
7,100.0	28.35	153.58	6,363.2	-2,677.7	1,330.7	2,990.0	3.00	-3.00	
7,200.0	25.35	153.58	6,452.4	-2,718.2	1,350.8	3,035.2	3.00	-3.00	
7,300.0	22.35	153.58	6,543.9	-2,754.4	1,368.8	3,075.6	3.00	-3.00	
7,400.0	19.35	153.58	6,637.3	-2,786.2	1,384.6	3,111.2	3.00	-3.00	
7,500.0	16.35	153.58	6,732.5	-2,813.7	1,398.2	3,141.8	3.00	-3.00	
7,600.0	13.35	153.58	6,829.2	-2,836.6	1,409.6	3,167.5	3.00	-3.00	
7,700.0	10.35	153.58	6,927.0	-2,855.0	1,418.8	3,188.0	3.00	-3.00	
7,800.0	7.35	153.58	7,025.8	-2,868.8	1,425.6	3,203.4	3.00	-3.00	
7,900.0	4.35	153.58	7,125.3	-2,877.9	1,430.2	3,213.5	3.00	-3.00	
8,000.0	1.35	153.58	7,225.2	-2,882.3	1,432.4	3,218.5	3.00	-3.00	
8,044.9	0.00	0.00	7,270.0	-2,882.8	1,432.6	3,219.0	3.00	-3.00	EOD @ Inc. = 0° - WILLIAMS FORK
8,100.0	0.01	236.51	7,325.1	-2,882.8	1,432.6	3,219.0	0.02	0.02	
8,200.0	0.03	236.51	7,425.1	-2,882.8	1,432.6	3,219.0	0.02	0.02	
8,300.0	0.06	236.51	7,525.1	-2,882.9	1,432.5	3,219.0	0.02	0.02	
8,400.0	0.08	236.51	7,625.1	-2,882.9	1,432.4	3,219.1	0.02	0.02	
8,500.0	0.10	236.51	7,725.1	-2,883.0	1,432.3	3,219.1	0.02	0.02	
8,600.0	0.12	236.51	7,825.1	-2,883.1	1,432.1	3,219.1	0.02	0.02	
8,700.0	0.14	236.51	7,925.1	-2,883.2	1,431.9	3,219.1	0.02	0.02	
8,800.0	0.16	236.51	8,025.1	-2,883.4	1,431.7	3,219.2	0.02	0.02	
8,900.0	0.19	236.51	8,125.1	-2,883.6	1,431.4	3,219.2	0.02	0.02	
9,000.0	0.21	236.51	8,225.1	-2,883.8	1,431.2	3,219.3	0.02	0.02	
9,100.0	0.23	236.51	8,325.1	-2,884.0	1,430.8	3,219.3	0.02	0.02	
9,200.0	0.25	236.51	8,425.1	-2,884.2	1,430.5	3,219.4	0.02	0.02	
9,300.0	0.27	236.51	8,525.1	-2,884.5	1,430.1	3,219.4	0.02	0.02	

# Cathedral Energy Services

## Planning Report

<b>Database:</b>	USA EDM 5000 Multi Users DB	<b>Local Co-ordinate Reference:</b>	Well UWF13D-03 H04 596
<b>Company:</b>	EnCana Oil & Gas (USA) Inc	<b>TVD Reference:</b>	WELL @ 8293.0ft (Original Well Elev)
<b>Project:</b>	North Piceance	<b>MD Reference:</b>	WELL @ 8293.0ft (Original Well Elev)
<b>Site:</b>	H04 Pad	<b>North Reference:</b>	True
<b>Well:</b>	UWF13D-03 H04 596	<b>Survey Calculation Method:</b>	Minimum Curvature
<b>Wellbore:</b>	DD		
<b>Design:</b>	Plan #1		

Planned Survey									
Measured Depth (ft)	Inclination (°)	Azimuth (°)	Vertical Depth (ft)	+N/-S (ft)	+E/-W (ft)	Vertical Section (ft)	Dogleg Rate (°/100ft)	Build Rate (°/100ft)	Comments / Formations
9,400.0	0.30	236.51	8,625.1	-2,884.7	1,429.7	3,219.5	0.02	0.02	
9,500.0	0.32	236.51	8,725.1	-2,885.0	1,429.2	3,219.6	0.02	0.02	
9,600.0	0.34	236.51	8,825.1	-2,885.3	1,428.8	3,219.6	0.02	0.02	
9,700.0	0.36	236.51	8,925.1	-2,885.7	1,428.3	3,219.7	0.02	0.02	
9,792.8	0.38	236.51	9,018.0	-2,886.0	1,427.8	3,219.8	0.02	0.02	
9,800.0	0.38	236.51	9,025.1	-2,886.0	1,427.7	3,219.8	0.00	0.00	
9,900.0	0.38	236.51	9,125.1	-2,886.4	1,427.2	3,219.9	0.00	0.00	
10,000.0	0.38	236.51	9,225.1	-2,886.8	1,426.6	3,220.0	0.00	0.00	
10,100.0	0.38	236.51	9,325.1	-2,887.1	1,426.0	3,220.1	0.00	0.00	
10,200.0	0.38	236.51	9,425.1	-2,887.5	1,425.5	3,220.1	0.00	0.00	
10,300.0	0.38	236.51	9,525.1	-2,887.9	1,424.9	3,220.2	0.00	0.00	
10,400.0	0.38	236.51	9,625.1	-2,888.2	1,424.4	3,220.3	0.00	0.00	
10,500.0	0.38	236.51	9,725.1	-2,888.6	1,423.8	3,220.4	0.00	0.00	
10,600.0	0.38	236.51	9,825.1	-2,889.0	1,423.3	3,220.5	0.00	0.00	
10,700.0	0.38	236.51	9,925.1	-2,889.3	1,422.7	3,220.6	0.00	0.00	
10,800.0	0.38	236.51	10,025.1	-2,889.7	1,422.2	3,220.7	0.00	0.00	
10,900.0	0.38	236.51	10,125.1	-2,890.1	1,421.6	3,220.8	0.00	0.00	
11,000.0	0.38	236.51	10,225.1	-2,890.4	1,421.1	3,220.8	0.00	0.00	
11,100.0	0.38	236.51	10,325.1	-2,890.8	1,420.5	3,220.9	0.00	0.00	
11,200.0	0.38	236.51	10,425.1	-2,891.2	1,419.9	3,221.0	0.00	0.00	
11,300.0	0.38	236.51	10,525.1	-2,891.5	1,419.4	3,221.1	0.00	0.00	
11,400.0	0.38	236.51	10,625.1	-2,891.9	1,418.8	3,221.2	0.00	0.00	
11,500.0	0.38	236.51	10,725.1	-2,892.3	1,418.3	3,221.3	0.00	0.00	
11,600.0	0.38	236.51	10,825.1	-2,892.6	1,417.7	3,221.4	0.00	0.00	
11,630.9	0.38	236.51	10,856.0	-2,892.8	1,417.6	3,221.4	0.00	0.00	TD @ 11,630.9' MD - ROLLINS
11,700.0	0.38	236.51	10,925.1	-2,893.0	1,417.2	3,221.5	0.00	0.00	
11,800.0	0.38	236.51	11,025.1	-2,893.4	1,416.6	3,221.5	0.00	0.00	
11,889.9	0.38	236.51	11,115.0	-2,893.7	1,416.1	3,221.6	0.00	0.00	COZZETTE
11,900.0	0.38	236.51	11,125.1	-2,893.7	1,416.1	3,221.6	0.00	0.00	
12,000.0	0.38	236.51	11,225.1	-2,894.1	1,415.5	3,221.7	0.00	0.00	
12,065.9	0.38	236.51	11,291.0	-2,894.3	1,415.1	3,221.8	0.00	0.00	CORCORAN
12,100.0	0.38	236.51	11,325.1	-2,894.5	1,414.9	3,221.8	0.00	0.00	
12,200.0	0.38	236.51	11,425.1	-2,894.8	1,414.4	3,221.9	0.00	0.00	
12,300.0	0.38	236.51	11,525.1	-2,895.2	1,413.8	3,222.0	0.00	0.00	
12,361.9	0.38	236.51	11,587.0	-2,895.4	1,413.5	3,222.0	0.00	0.00	UPPER SEGO
12,400.0	0.38	236.51	11,625.1	-2,895.6	1,413.3	3,222.1	0.00	0.00	
12,500.0	0.38	236.51	11,725.1	-2,895.9	1,412.7	3,222.2	0.00	0.00	
12,600.0	0.38	236.51	11,825.1	-2,896.3	1,412.2	3,222.2	0.00	0.00	
12,700.0	0.38	236.51	11,925.1	-2,896.7	1,411.6	3,222.3	0.00	0.00	
12,800.0	0.38	236.51	12,025.1	-2,897.0	1,411.1	3,222.4	0.00	0.00	
12,900.0	0.38	236.51	12,125.1	-2,897.4	1,410.5	3,222.5	0.00	0.00	
13,000.0	0.38	236.51	12,225.1	-2,897.8	1,410.0	3,222.6	0.00	0.00	Permit TD @ 13,000' MD

# Cathedral Energy Services

## Planning Report

<b>Database:</b>	USA EDM 5000 Multi Users DB	<b>Local Co-ordinate Reference:</b>	Well UWF13D-03 H04 596
<b>Company:</b>	EnCana Oil & Gas (USA) Inc	<b>TVD Reference:</b>	WELL @ 8293.0ft (Original Well Elev)
<b>Project:</b>	North Piceance	<b>MD Reference:</b>	WELL @ 8293.0ft (Original Well Elev)
<b>Site:</b>	H04 Pad	<b>North Reference:</b>	True
<b>Well:</b>	UWF13D-03 H04 596	<b>Survey Calculation Method:</b>	Minimum Curvature
<b>Wellbore:</b>	DD		
<b>Design:</b>	Plan #1		

Targets									
Target Name	Dip Angle	Dip Dir.	TVD	+N/-S	+E/-W	Northing	Easting	Latitude	Longitude
- hit/miss target	(°)	(°)	(ft)	(ft)	(ft)	(ft)	(ft)		
- Shape									
UWF13D-03 TGT - plan hits target center - Point	0.00	0.00	7,270.0	-2,882.8	1,432.6	1,668,164.01	2,250,970.71	39° 38' 16.05 N	108° 9' 36.00 W
UWF13D-03 BHL - plan hits target center - Point	0.00	0.00	10,856.0	-2,892.8	1,417.6	1,668,154.50	2,250,955.38	39° 38' 15.95 N	108° 9' 36.19 W

Formations						
Measured Depth	Vertical Depth	Name	Lithology	Dip	Dip Direction	
(ft)	(ft)			(°)	(°)	
1,080.7	1,063.0	A GROOVE				
1,256.7	1,223.0	B GROOVE				
1,301.9	1,263.0	B GROOVE BASE				
2,222.8	2,073.0	GARDEN GULCH				
3,433.5	3,138.0	WASATCH FM				
5,796.9	5,217.0	WASATCH G				
8,044.9	7,270.0	WILLIAMS FORK				
11,630.9	10,856.0	ROLLINS				
11,889.9	11,115.0	COZZETTE				
12,065.9	11,291.0	CORCORAN				
12,361.9	11,587.0	UPPER SEGO				

Plan Annotations					
Measured Depth	Vertical Depth	Local Coordinates		Comment	
(ft)	(ft)	+N/-S	+E/-W		
		(ft)	(ft)		
350.0	350.0	0.0	0.0	KOP @ 350'	
1,296.7	1,258.4	-205.9	102.3	EOB @ Inc. = 28.4°	
7,098.2	6,361.6	-2,676.9	1,330.3	Start 3° Drop	
8,044.9	7,270.0	-2,882.8	1,432.6	EOD @ Inc. = 0°	
11,630.9	10,856.0	-2,892.8	1,417.6	TD @ 11,630.9' MD	
13,000.0	12,225.1	-2,897.8	1,410.0	Permit TD @ 13,000' MD	