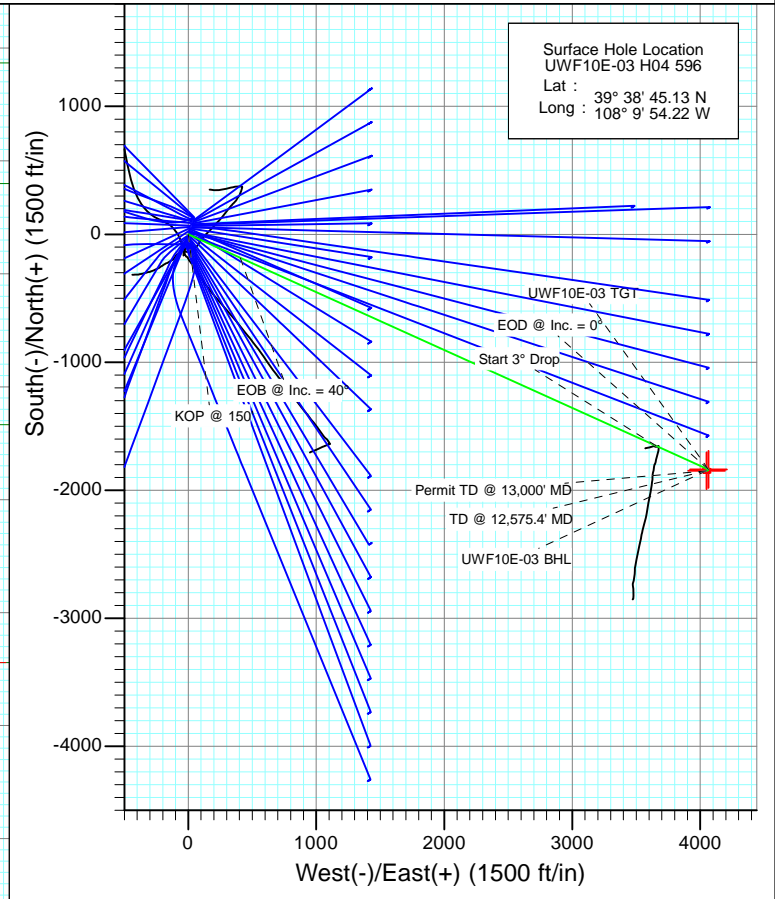


SECTION DETAILS										
Sec	MD	Inc	Azi	TVD	+N/-S	+E/-W	Dleg	TFace	V Sect	Target
1	0.0	0.00	0.00	0.0	0.0	0.0	0.00	0.00	0.0	
2	150.0	0.00	0.00	150.0	0.0	0.0	0.00	0.00	0.0	
3	1483.5	40.00	114.33	1377.8	-184.1	407.2	3.00	114.33	446.9	
4	7029.9	40.00	114.33	5626.2	-1653.2	3656.1	0.00	0.00	4012.4	
5	8363.4	0.00	0.00	6854.0	-1837.3	4063.3	3.00	180.00	4459.3	UWF10E-03 TGT
6	8950.4	0.00	0.00	7441.0	-1837.3	4063.3	0.00	0.00	4459.3	
7	10701.3	0.38	236.42	9191.9	-1840.5	4058.5	0.02	236.42	4456.3	UWF10E-03 BHL
8	12575.4	0.38	236.42	11066.0	-1847.3	4048.3	0.00	0.00	4449.8	
9	13095.6	0.38	236.42	11586.2	-1849.1	4045.5	0.00	0.00	4448.0	



**T M**

Azimuths to True North  
 Magnetic North: 10.34°

Magnetic Field  
 Strength: 52205.7nT  
 Dip Angle: 65.81°  
 Date: 4/19/2012  
 Model: IGRF2010

FORMATION TOP DETAILS		
TVDPath	MDPath	Formation
1082.0	1123.6	A GROOVE
1240.0	1310.0	B GROOVE
1280.0	1359.2	B GROOVE BASE
2132.0	2468.2	GARDEN GULCH
3200.0	3862.4	WASATCH FM
5335.0	6649.7	WASATCH G
7441.0	8950.4	WILLIAMS FORK
11066.0	12575.4	ROLLINS
11299.0	12808.5	COZZETTE
11482.0	12991.5	CORCORAN

Plan #1  
 UWF10E-03 H04 596  
 WELL @ 8293.0ft (Original Well Elev)  
 North American Datum 1983  
 Well UWF10E-03 H04 596, True North

Type	Target	Azimuth	Origin	Type	N/S	E/W	From TVD
TD	No Target (Freehand)	114.56	Slot		0.0	0.0	0.0
Name	TVD	+N/-S	+E/-W	Latitude	Longitude		
UWF10E-03 TGT	7441.0	-1837.3	4063.3	39° 38' 26.97 N	108° 9' 2.28 W		
UWF10E-03 BHL	11066.0	-1847.3	4048.3	39° 38' 26.87 N	108° 9' 2.47 W		

# Cathedral Energy Services

## Planning Report

<b>Database:</b> USA EDM 5000 Multi Users DB	<b>Local Co-ordinate Reference:</b> Well UWF10E-03 H04 596
<b>Company:</b> EnCana Oil & Gas (USA) Inc	<b>TVD Reference:</b> WELL @ 8293.0ft (Original Well Elev)
<b>Project:</b> North Piceance	<b>MD Reference:</b> WELL @ 8293.0ft (Original Well Elev)
<b>Site:</b> H04 Pad	<b>North Reference:</b> True
<b>Well:</b> UWF10E-03 H04 596	<b>Survey Calculation Method:</b> Minimum Curvature
<b>Wellbore:</b> DD	
<b>Design:</b> Plan #1	

<b>Project</b> North Piceance		
<b>Map System:</b> US State Plane 1983	<b>System Datum:</b> Mean Sea Level	
<b>Geo Datum:</b> North American Datum 1983		
<b>Map Zone:</b> Colorado Central Zone		

<b>Site</b> H04 Pad					
<b>Site Position:</b>		<b>Northing:</b>	1,671,070.85 ft	<b>Latitude:</b>	39° 38' 44.37 N
<b>From:</b>	Lat/Long	<b>Easting:</b>	2,249,607.93 ft	<b>Longitude:</b>	108° 9' 54.50 W
<b>Position Uncertainty:</b>	0.0 ft	<b>Slot Radius:</b>	13.200 in	<b>Grid Convergence:</b>	-1.68 °

<b>Well</b> UWF10E-03 H04 596					
<b>Well Position</b>	<b>+N/-S</b>	0.0 ft	<b>Northing:</b>	1,671,147.06 ft	<b>Latitude:</b> 39° 38' 45.13 N
	<b>+E/-W</b>	0.0 ft	<b>Easting:</b>	2,249,632.08 ft	<b>Longitude:</b> 108° 9' 54.22 W
<b>Position Uncertainty</b>		0.0 ft	<b>Wellhead Elevation:</b>	ft	<b>Ground Level:</b> 8,260.0 ft

<b>Wellbore</b> DD					
<b>Magnetics</b>	<b>Model Name</b>	<b>Sample Date</b>	<b>Declination</b>	<b>Dip Angle</b>	<b>Field Strength</b>
	IGRF2010	4/19/2012	(°) 10.34	(°) 65.81	(nT) 52,206

<b>Design</b> Plan #1				
<b>Audit Notes:</b>				
<b>Version:</b>	<b>Phase:</b>	PLAN	<b>Tie On Depth:</b>	0.0
<b>Vertical Section:</b>	<b>Depth From (TVD)</b>	<b>+N/-S</b>	<b>+E/-W</b>	<b>Direction</b>
	(ft)	(ft)	(ft)	(°)
	0.0	0.0	0.0	114.56

<b>Plan Sections</b>										
Measured Depth (ft)	Inclination (°)	Azimuth (°)	Vertical Depth (ft)	+N/-S (ft)	+E/-W (ft)	Dogleg Rate (°/100ft)	Build Rate (°/100ft)	Turn Rate (°/100ft)	TFO (°)	Target
0.0	0.00	0.00	0.0	0.0	0.0	0.00	0.00	0.00	0.00	
150.0	0.00	0.00	150.0	0.0	0.0	0.00	0.00	0.00	0.00	
1,483.5	40.00	114.33	1,377.8	-184.1	407.2	3.00	3.00	0.00	114.33	
7,029.9	40.00	114.33	5,626.2	-1,653.2	3,656.1	0.00	0.00	0.00	0.00	
8,363.4	0.00	0.00	6,854.0	-1,837.3	4,063.3	3.00	-3.00	0.00	180.00	
8,950.4	0.00	0.00	7,441.0	-1,837.3	4,063.3	0.00	0.00	0.00	0.00	UWF10E-03 TGT
10,701.3	0.38	236.42	9,191.9	-1,840.5	4,058.5	0.02	0.02	-7.06	236.42	
12,575.4	0.38	236.42	11,066.0	-1,847.3	4,048.3	0.00	0.00	0.00	0.00	UWF10E-03 BHL
13,095.6	0.38	236.42	11,586.2	-1,849.1	4,045.5	0.00	0.00	0.00	0.00	

# Cathedral Energy Services

## Planning Report

<b>Database:</b>	USA EDM 5000 Multi Users DB	<b>Local Co-ordinate Reference:</b>	Well UWF10E-03 H04 596
<b>Company:</b>	EnCana Oil & Gas (USA) Inc	<b>TVD Reference:</b>	WELL @ 8293.0ft (Original Well Elev)
<b>Project:</b>	North Piceance	<b>MD Reference:</b>	WELL @ 8293.0ft (Original Well Elev)
<b>Site:</b>	H04 Pad	<b>North Reference:</b>	True
<b>Well:</b>	UWF10E-03 H04 596	<b>Survey Calculation Method:</b>	Minimum Curvature
<b>Wellbore:</b>	DD		
<b>Design:</b>	Plan #1		

Planned Survey									
Measured Depth (ft)	Inclination (°)	Azimuth (°)	Vertical Depth (ft)	+N/-S (ft)	+E/-W (ft)	Vertical Section (ft)	Dogleg Rate (°/100ft)	Build Rate (°/100ft)	Comments / Formations
0.0	0.00	0.00	0.0	0.0	0.0	0.0	0.00	0.00	
100.0	0.00	0.00	100.0	0.0	0.0	0.0	0.00	0.00	
150.0	0.00	0.00	150.0	0.0	0.0	0.0	0.00	0.00	KOP @ 150'
200.0	1.50	114.33	200.0	-0.3	0.6	0.7	3.00	3.00	
300.0	4.50	114.33	299.8	-2.4	5.4	5.9	3.00	3.00	
400.0	7.50	114.33	399.3	-6.7	14.9	16.3	3.00	3.00	
500.0	10.50	114.33	498.0	-13.2	29.1	32.0	3.00	3.00	
600.0	13.50	114.33	595.8	-21.7	48.1	52.8	3.00	3.00	
700.0	16.50	114.33	692.4	-32.4	71.7	78.6	3.00	3.00	
800.0	19.50	114.33	787.5	-45.1	99.8	109.5	3.00	3.00	
900.0	22.50	114.33	880.9	-59.9	132.5	145.4	3.00	3.00	
1,000.0	25.50	114.33	972.2	-76.7	169.5	186.0	3.00	3.00	
1,100.0	28.50	114.33	1,061.3	-95.4	210.9	231.4	3.00	3.00	
1,123.6	29.21	114.33	1,082.0	-100.1	221.3	242.8	3.00	3.00	A GROOVE
1,200.0	31.50	114.33	1,147.9	-116.0	256.4	281.4	3.00	3.00	
1,300.0	34.50	114.33	1,231.8	-138.4	306.1	335.9	3.00	3.00	
1,310.0	34.80	114.33	1,240.0	-140.7	311.3	341.6	3.00	3.00	B GROOVE
1,359.2	36.28	114.33	1,280.0	-152.5	337.3	370.2	3.00	3.00	B GROOVE BASE
1,400.0	37.50	114.33	1,312.6	-162.6	359.6	394.7	3.00	3.00	
1,483.5	40.00	114.33	1,377.8	-184.1	407.2	446.9	3.00	3.00	EOB @ Inc. = 40°
1,500.0	40.00	114.33	1,390.4	-188.5	416.9	457.5	0.00	0.00	
1,600.0	40.00	114.33	1,467.0	-215.0	475.5	521.8	0.00	0.00	
1,700.0	40.00	114.33	1,543.6	-241.5	534.0	586.1	0.00	0.00	
1,800.0	40.00	114.33	1,620.2	-268.0	592.6	650.4	0.00	0.00	
1,900.0	40.00	114.33	1,696.8	-294.5	651.2	714.7	0.00	0.00	
2,000.0	40.00	114.33	1,773.4	-320.9	709.8	779.0	0.00	0.00	
2,100.0	40.00	114.33	1,850.0	-347.4	768.4	843.2	0.00	0.00	
2,200.0	40.00	114.33	1,926.6	-373.9	826.9	907.5	0.00	0.00	
2,300.0	40.00	114.33	2,003.2	-400.4	885.5	971.8	0.00	0.00	
2,400.0	40.00	114.33	2,079.8	-426.9	944.1	1,036.1	0.00	0.00	
2,468.2	40.00	114.33	2,132.0	-444.9	984.0	1,079.9	0.00	0.00	GARDEN GULCH
2,500.0	40.00	114.33	2,156.4	-453.4	1,002.7	1,100.4	0.00	0.00	
2,600.0	40.00	114.33	2,233.0	-479.9	1,061.2	1,164.7	0.00	0.00	
2,700.0	40.00	114.33	2,309.6	-506.3	1,119.8	1,229.0	0.00	0.00	
2,800.0	40.00	114.33	2,386.2	-532.8	1,178.4	1,293.2	0.00	0.00	
2,900.0	40.00	114.33	2,462.8	-559.3	1,237.0	1,357.5	0.00	0.00	
3,000.0	40.00	114.33	2,539.4	-585.8	1,295.5	1,421.8	0.00	0.00	
3,100.0	40.00	114.33	2,616.0	-612.3	1,354.1	1,486.1	0.00	0.00	
3,200.0	40.00	114.33	2,692.6	-638.8	1,412.7	1,550.4	0.00	0.00	
3,300.0	40.00	114.33	2,769.2	-665.3	1,471.3	1,614.7	0.00	0.00	
3,400.0	40.00	114.33	2,845.8	-691.7	1,529.8	1,678.9	0.00	0.00	
3,500.0	40.00	114.33	2,922.4	-718.2	1,588.4	1,743.2	0.00	0.00	
3,600.0	40.00	114.33	2,999.0	-744.7	1,647.0	1,807.5	0.00	0.00	
3,700.0	40.00	114.33	3,075.6	-771.2	1,705.6	1,871.8	0.00	0.00	
3,800.0	40.00	114.33	3,152.2	-797.7	1,764.1	1,936.1	0.00	0.00	
3,862.4	40.00	114.33	3,200.0	-814.2	1,800.7	1,976.2	0.00	0.00	WASATCH FM
3,900.0	40.00	114.33	3,228.8	-824.2	1,822.7	2,000.4	0.00	0.00	
4,000.0	40.00	114.33	3,305.4	-850.7	1,881.3	2,064.7	0.00	0.00	
4,100.0	40.00	114.33	3,382.0	-877.1	1,939.9	2,128.9	0.00	0.00	
4,200.0	40.00	114.33	3,458.6	-903.6	1,998.4	2,193.2	0.00	0.00	
4,300.0	40.00	114.33	3,535.2	-930.1	2,057.0	2,257.5	0.00	0.00	
4,400.0	40.00	114.33	3,611.8	-956.6	2,115.6	2,321.8	0.00	0.00	

# Cathedral Energy Services

## Planning Report

**Database:** USA EDM 5000 Multi Users DB  
**Company:** EnCana Oil & Gas (USA) Inc  
**Project:** North Piceance  
**Site:** H04 Pad  
**Well:** UWF10E-03 H04 596  
**Wellbore:** DD  
**Design:** Plan #1

**Local Co-ordinate Reference:** Well UWF10E-03 H04 596  
**TVD Reference:** WELL @ 8293.0ft (Original Well Elev)  
**MD Reference:** WELL @ 8293.0ft (Original Well Elev)  
**North Reference:** True  
**Survey Calculation Method:** Minimum Curvature

### Planned Survey

Measured Depth (ft)	Inclination (°)	Azimuth (°)	Vertical Depth (ft)	+N/-S (ft)	+E/-W (ft)	Vertical Section (ft)	Dogleg Rate (°/100ft)	Build Rate (°/100ft)	Comments / Formations
4,500.0	40.00	114.33	3,688.4	-983.1	2,174.2	2,386.1	0.00	0.00	
4,600.0	40.00	114.33	3,765.0	-1,009.6	2,232.7	2,450.4	0.00	0.00	
4,700.0	40.00	114.33	3,841.6	-1,036.1	2,291.3	2,514.6	0.00	0.00	
4,800.0	40.00	114.33	3,918.2	-1,062.5	2,349.9	2,578.9	0.00	0.00	
4,900.0	40.00	114.33	3,994.8	-1,089.0	2,408.5	2,643.2	0.00	0.00	
5,000.0	40.00	114.33	4,071.4	-1,115.5	2,467.0	2,707.5	0.00	0.00	
5,100.0	40.00	114.33	4,148.0	-1,142.0	2,525.6	2,771.8	0.00	0.00	
5,200.0	40.00	114.33	4,224.6	-1,168.5	2,584.2	2,836.1	0.00	0.00	
5,300.0	40.00	114.33	4,301.2	-1,195.0	2,642.8	2,900.4	0.00	0.00	
5,400.0	40.00	114.33	4,377.8	-1,221.5	2,701.3	2,964.6	0.00	0.00	
5,500.0	40.00	114.33	4,454.4	-1,247.9	2,759.9	3,028.9	0.00	0.00	
5,600.0	40.00	114.33	4,531.0	-1,274.4	2,818.5	3,093.2	0.00	0.00	
5,700.0	40.00	114.33	4,607.6	-1,300.9	2,877.1	3,157.5	0.00	0.00	
5,800.0	40.00	114.33	4,684.2	-1,327.4	2,935.6	3,221.8	0.00	0.00	
5,900.0	40.00	114.33	4,760.8	-1,353.9	2,994.2	3,286.1	0.00	0.00	
6,000.0	40.00	114.33	4,837.4	-1,380.4	3,052.8	3,350.4	0.00	0.00	
6,100.0	40.00	114.33	4,913.9	-1,406.9	3,111.4	3,414.6	0.00	0.00	
6,200.0	40.00	114.33	4,990.5	-1,433.4	3,170.0	3,478.9	0.00	0.00	
6,300.0	40.00	114.33	5,067.1	-1,459.8	3,228.5	3,543.2	0.00	0.00	
6,400.0	40.00	114.33	5,143.7	-1,486.3	3,287.1	3,607.5	0.00	0.00	
6,500.0	40.00	114.33	5,220.3	-1,512.8	3,345.7	3,671.8	0.00	0.00	
6,600.0	40.00	114.33	5,296.9	-1,539.3	3,404.3	3,736.1	0.00	0.00	
6,649.7	40.00	114.33	5,335.0	-1,552.5	3,433.4	3,768.0	0.00	0.00	WASATCH G
6,700.0	40.00	114.33	5,373.5	-1,565.8	3,462.8	3,800.3	0.00	0.00	
6,800.0	40.00	114.33	5,450.1	-1,592.3	3,521.4	3,864.6	0.00	0.00	
6,900.0	40.00	114.33	5,526.7	-1,618.8	3,580.0	3,928.9	0.00	0.00	
7,000.0	40.00	114.33	5,603.3	-1,645.2	3,638.6	3,993.2	0.00	0.00	
7,029.9	40.00	114.33	5,626.2	-1,653.2	3,656.1	4,012.4	0.00	0.00	Start 3° Drop
7,100.0	37.90	114.33	5,680.8	-1,671.3	3,696.2	4,056.5	3.00	-3.00	
7,200.0	34.90	114.33	5,761.2	-1,695.8	3,750.3	4,115.8	3.00	-3.00	
7,300.0	31.90	114.33	5,844.7	-1,718.4	3,800.4	4,170.9	3.00	-3.00	
7,400.0	28.90	114.33	5,930.9	-1,739.3	3,846.6	4,221.5	3.00	-3.00	
7,500.0	25.90	114.33	6,019.7	-1,758.2	3,888.5	4,267.5	3.00	-3.00	
7,600.0	22.90	114.33	6,110.8	-1,775.3	3,926.1	4,308.8	3.00	-3.00	
7,700.0	19.90	114.33	6,203.9	-1,790.3	3,959.4	4,345.3	3.00	-3.00	
7,800.0	16.90	114.33	6,298.7	-1,803.3	3,988.1	4,376.8	3.00	-3.00	
7,900.0	13.90	114.33	6,395.1	-1,814.2	4,012.3	4,403.4	3.00	-3.00	
8,000.0	10.90	114.33	6,492.8	-1,823.1	4,031.9	4,424.9	3.00	-3.00	
8,100.0	7.90	114.33	6,591.4	-1,829.8	4,046.8	4,441.2	3.00	-3.00	
8,200.0	4.90	114.33	6,690.8	-1,834.4	4,056.9	4,452.4	3.00	-3.00	
8,300.0	1.90	114.33	6,790.6	-1,836.9	4,062.3	4,458.3	3.00	-3.00	
8,363.4	0.00	0.00	6,854.0	-1,837.3	4,063.3	4,459.3	3.00	-3.00	EOD @ Inc. = 0°
8,400.0	0.00	0.00	6,890.6	-1,837.3	4,063.3	4,459.3	0.00	0.00	
8,500.0	0.00	0.00	6,990.6	-1,837.3	4,063.3	4,459.3	0.00	0.00	
8,600.0	0.00	0.00	7,090.6	-1,837.3	4,063.3	4,459.3	0.00	0.00	
8,700.0	0.00	0.00	7,190.6	-1,837.3	4,063.3	4,459.3	0.00	0.00	
8,800.0	0.00	0.00	7,290.6	-1,837.3	4,063.3	4,459.3	0.00	0.00	
8,900.0	0.00	0.00	7,390.6	-1,837.3	4,063.3	4,459.3	0.00	0.00	
8,950.4	0.00	0.00	7,441.0	-1,837.3	4,063.3	4,459.3	0.00	0.00	WILLIAMS FORK
9,000.0	0.01	236.42	7,490.6	-1,837.3	4,063.3	4,459.3	0.02	0.02	
9,100.0	0.03	236.42	7,590.6	-1,837.3	4,063.3	4,459.3	0.02	0.02	
9,200.0	0.05	236.42	7,690.6	-1,837.4	4,063.2	4,459.3	0.02	0.02	

# Cathedral Energy Services

## Planning Report

**Database:** USA EDM 5000 Multi Users DB  
**Company:** EnCana Oil & Gas (USA) Inc  
**Project:** North Piceance  
**Site:** H04 Pad  
**Well:** UWF10E-03 H04 596  
**Wellbore:** DD  
**Design:** Plan #1

**Local Co-ordinate Reference:** Well UWF10E-03 H04 596  
**TVD Reference:** WELL @ 8293.0ft (Original Well Elev)  
**MD Reference:** WELL @ 8293.0ft (Original Well Elev)  
**North Reference:** True  
**Survey Calculation Method:** Minimum Curvature

### Planned Survey

Measured Depth (ft)	Inclination (°)	Azimuth (°)	Vertical Depth (ft)	+N/-S (ft)	+E/-W (ft)	Vertical Section (ft)	Dogleg Rate (°/100ft)	Build Rate (°/100ft)	Comments / Formations
9,300.0	0.07	236.42	7,790.6	-1,837.4	4,063.1	4,459.2	0.02	0.02	
9,400.0	0.10	236.42	7,890.6	-1,837.5	4,063.0	4,459.1	0.02	0.02	
9,500.0	0.12	236.42	7,990.6	-1,837.6	4,062.8	4,459.0	0.02	0.02	
9,600.0	0.14	236.42	8,090.6	-1,837.7	4,062.6	4,458.9	0.02	0.02	
9,700.0	0.16	236.42	8,190.6	-1,837.9	4,062.4	4,458.8	0.02	0.02	
9,800.0	0.18	236.42	8,290.6	-1,838.0	4,062.2	4,458.6	0.02	0.02	
9,900.0	0.20	236.42	8,390.6	-1,838.2	4,061.9	4,458.5	0.02	0.02	
10,000.0	0.22	236.42	8,490.6	-1,838.4	4,061.6	4,458.3	0.02	0.02	
10,100.0	0.25	236.42	8,590.6	-1,838.7	4,061.2	4,458.0	0.02	0.02	
10,200.0	0.27	236.42	8,690.6	-1,838.9	4,060.9	4,457.8	0.02	0.02	
10,300.0	0.29	236.42	8,790.6	-1,839.2	4,060.5	4,457.5	0.02	0.02	
10,400.0	0.31	236.42	8,890.6	-1,839.5	4,060.0	4,457.3	0.02	0.02	
10,500.0	0.33	236.42	8,990.6	-1,839.8	4,059.6	4,457.0	0.02	0.02	
10,600.0	0.35	236.42	9,090.6	-1,840.1	4,059.1	4,456.7	0.02	0.02	
10,701.3	0.38	236.42	9,191.9	-1,840.5	4,058.5	4,456.3	0.02	0.02	
10,800.0	0.38	236.42	9,290.6	-1,840.8	4,058.0	4,456.0	0.00	0.00	
10,900.0	0.38	236.42	9,390.6	-1,841.2	4,057.4	4,455.6	0.00	0.00	
11,000.0	0.38	236.42	9,490.6	-1,841.5	4,056.9	4,455.3	0.00	0.00	
11,100.0	0.38	236.42	9,590.6	-1,841.9	4,056.3	4,454.9	0.00	0.00	
11,200.0	0.38	236.42	9,690.6	-1,842.3	4,055.8	4,454.6	0.00	0.00	
11,300.0	0.38	236.42	9,790.6	-1,842.6	4,055.3	4,454.2	0.00	0.00	
11,400.0	0.38	236.42	9,890.6	-1,843.0	4,054.7	4,453.9	0.00	0.00	
11,500.0	0.38	236.42	9,990.6	-1,843.4	4,054.2	4,453.6	0.00	0.00	
11,600.0	0.38	236.42	10,090.6	-1,843.7	4,053.6	4,453.2	0.00	0.00	
11,700.0	0.38	236.42	10,190.6	-1,844.1	4,053.1	4,452.9	0.00	0.00	
11,800.0	0.38	236.42	10,290.6	-1,844.4	4,052.5	4,452.5	0.00	0.00	
11,900.0	0.38	236.42	10,390.6	-1,844.8	4,052.0	4,452.2	0.00	0.00	
12,000.0	0.38	236.42	10,490.6	-1,845.2	4,051.4	4,451.8	0.00	0.00	
12,100.0	0.38	236.42	10,590.6	-1,845.5	4,050.9	4,451.5	0.00	0.00	
12,200.0	0.38	236.42	10,690.6	-1,845.9	4,050.3	4,451.1	0.00	0.00	
12,300.0	0.38	236.42	10,790.6	-1,846.3	4,049.8	4,450.8	0.00	0.00	
12,400.0	0.38	236.42	10,890.6	-1,846.6	4,049.3	4,450.4	0.00	0.00	
12,500.0	0.38	236.42	10,990.6	-1,847.0	4,048.7	4,450.1	0.00	0.00	
12,575.4	0.38	236.42	11,066.0	-1,847.3	4,048.3	4,449.8	0.00	0.00	TD @ 12,575.4' MD - ROLLINS
12,600.0	0.38	236.42	11,090.6	-1,847.3	4,048.2	4,449.8	0.00	0.00	
12,700.0	0.38	236.42	11,190.6	-1,847.7	4,047.6	4,449.4	0.00	0.00	
12,800.0	0.38	236.42	11,290.5	-1,848.1	4,047.1	4,449.1	0.00	0.00	
12,808.5	0.38	236.42	11,299.0	-1,848.1	4,047.0	4,449.0	0.00	0.00	COZZETTE
12,900.0	0.38	236.42	11,390.5	-1,848.4	4,046.5	4,448.7	0.00	0.00	
12,991.5	0.38	236.42	11,482.0	-1,848.8	4,046.0	4,448.4	0.00	0.00	CORCORAN
13,000.0	0.38	236.42	11,490.5	-1,848.8	4,046.0	4,448.4	0.00	0.00	Permit TD @ 13,000' MD
13,095.6	0.38	236.42	11,586.2	-1,849.1	4,045.5	4,448.0	0.00	0.00	

# Cathedral Energy Services

## Planning Report

<b>Database:</b>	USA EDM 5000 Multi Users DB	<b>Local Co-ordinate Reference:</b>	Well UWF10E-03 H04 596
<b>Company:</b>	EnCana Oil & Gas (USA) Inc	<b>TVD Reference:</b>	WELL @ 8293.0ft (Original Well Elev)
<b>Project:</b>	North Piceance	<b>MD Reference:</b>	WELL @ 8293.0ft (Original Well Elev)
<b>Site:</b>	H04 Pad	<b>North Reference:</b>	True
<b>Well:</b>	UWF10E-03 H04 596	<b>Survey Calculation Method:</b>	Minimum Curvature
<b>Wellbore:</b>	DD		
<b>Design:</b>	Plan #1		

Targets									
Target Name	Dip Angle	Dip Dir.	TVD	+N/-S	+E/-W	Northing	Easting	Latitude	Longitude
- hit/miss target	(°)	(°)	(ft)	(ft)	(ft)	(ft)	(ft)		
- Shape									
UWF10E-03 TGT - plan hits target center - Point	0.00	0.00	7,441.0	-1,837.3	4,063.3	1,669,191.37	2,253,639.74	39° 38' 26.97 N	108° 9' 2.28 W
UWF10E-03 BHL - plan hits target center - Point	0.00	0.00	11,066.0	-1,847.3	4,048.3	1,669,181.85	2,253,624.45	39° 38' 26.87 N	108° 9' 2.47 W

Formations						
Measured Depth	Vertical Depth	Name	Lithology	Dip	Dip Direction	
(ft)	(ft)			(°)	(°)	
1,123.6	1,082.0	A GROOVE				
1,310.0	1,240.0	B GROOVE				
1,359.2	1,280.0	B GROOVE BASE				
2,468.2	2,132.0	GARDEN GULCH				
3,862.4	3,200.0	WASATCH FM				
6,649.7	5,335.0	WASATCH G				
8,950.4	7,441.0	WILLIAMS FORK				
12,575.4	11,066.0	ROLLINS				
12,808.5	11,299.0	COZZETTE				
12,991.5	11,482.0	CORCORAN				

Plan Annotations					
Measured Depth	Vertical Depth	Local Coordinates		Comment	
(ft)	(ft)	+N/-S (ft)	+E/-W (ft)		
150.0	150.0	0.0	0.0	KOP @ 150'	
1,483.5	1,377.8	-184.1	407.2	EOB @ Inc. = 40°	
7,029.9	5,626.2	-1,653.2	3,656.1	Start 3° Drop	
8,363.4	6,854.0	-1,837.3	4,063.3	EOD @ Inc. = 0°	
12,575.4	11,066.0	-1,847.3	4,048.3	TD @ 12,575.4' MD	
13,000.0	11,490.5	-1,848.8	4,046.0	Permit TD @ 13,000' MD	