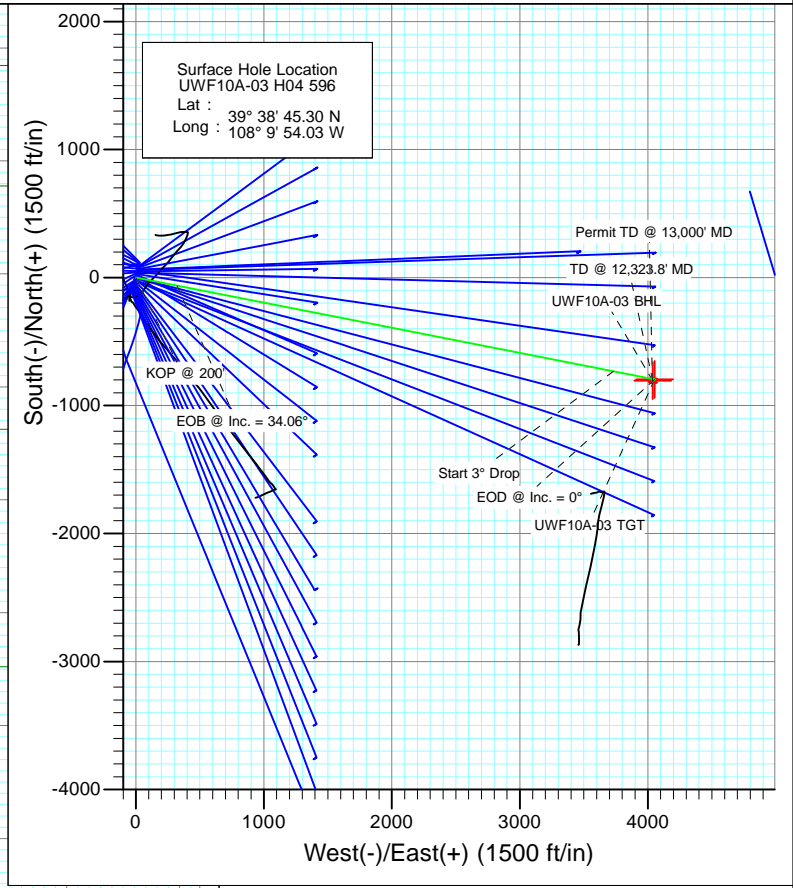


SECTION DETAILS										
Sec	MD	Inc	Azi	TVD	+N/-S	+E/-W	Dleg	TFace	VSec	Target
1	0.0	0.00	0.00	0.0	0.0	0.0	0.00	0.00	0.0	
2	200.0	0.00	0.00	200.0	0.0	0.0	0.00	0.00	0.0	
3	1335.3	34.06	101.10	1269.6	-63.1	321.5	3.00	101.10	327.6	
4	7540.5	34.06	101.10	6410.4	-732.0	3731.5	0.00	0.00	3802.6	
5	8675.7	0.00	0.00	7480.0	-795.1	4053.0	3.00	180.00	4130.2	UWF10A-03 TGT
6	10430.6	0.37	236.43	9234.9	-798.3	4048.2	0.02	236.43	4126.2	
7	12323.8	0.37	236.43	11128.0	-805.1	4038.0	0.00	0.00	4117.4	UWF10A-03 BHL
8	13000.0	0.37	236.43	11804.2	-807.5	4034.3	0.00	0.00	4114.3	



Azimuths to True North
 Magnetic North: 10.34°
 Magnetic Field
 Strength: 52205.7snT
 Dip Angle: 65.81°
 Date: 4/19/2012
 Model: IGRF2010

FORMATION TOP DETAILS		
TVDPath	MDPath	Formation
1089.0	1124.7	A GROOVE
1249.0	1310.5	B GROOVE
1289.0	1358.7	B GROOVE BASE
2155.0	2404.0	GARDEN GULCH
3223.0	3693.1	WASATCH FM
5376.0	6291.9	WASATCH G
7480.0	8675.7	WILLIAMS FORK
11128.0	12323.8	ROLLINS
11375.0	12570.8	COZZETTE
11553.0	12748.8	CORCORAN

Plan #1 UWF10A-03 H04 596 WELL @ 8293.0ft (Original Well Elev) North American Datum 1983 Well UWF10A-03 H04 596, True North						
Type	Target	Azimuth	Origin Type	N/S	E/W	From TVD
TD	No Target (Freehand)	101.32	Slot	0.0	0.0	0.0
Name	TVD	+N/-S	+E/-W	Latitude	Longitude	
UWF10A-03 TGT	7480.0	-795.1	4053.0	39° 38' 37.44 N	108° 9' 2.22 W	
UWF10A-03 BHL	11128.0	-805.1	4038.0	39° 38' 37.34 N	108° 9' 2.41 W	

Cathedral Energy Services

Planning Report

Database: USA EDM 5000 Multi Users DB	Local Co-ordinate Reference: Well UWF10A-03 H04 596
Company: EnCana Oil & Gas (USA) Inc	TVD Reference: WELL @ 8293.0ft (Original Well Elev)
Project: North Piceance	MD Reference: WELL @ 8293.0ft (Original Well Elev)
Site: H04 Pad	North Reference: True
Well: UWF10A-03 H04 596	Survey Calculation Method: Minimum Curvature
Wellbore: DD	
Design: Plan #1	

Project North Piceance		
Map System: US State Plane 1983	System Datum: Mean Sea Level	
Geo Datum: North American Datum 1983		
Map Zone: Colorado Central Zone		

Site H04 Pad					
Site Position:		Northing:	1,671,070.85 ft	Latitude:	39° 38' 44.37 N
From:	Lat/Long	Easting:	2,249,607.93 ft	Longitude:	108° 9' 54.50 W
Position Uncertainty:	0.0 ft	Slot Radius:	13.200 in	Grid Convergence:	-1.68 °

Well UWF10A-03 H04 596					
Well Position	+N/-S	0.0 ft	Northing:	1,671,163.81 ft	Latitude: 39° 38' 45.30 N
	+E/-W	0.0 ft	Easting:	2,249,647.44 ft	Longitude: 108° 9' 54.03 W
Position Uncertainty		0.0 ft	Wellhead Elevation:	ft	Ground Level: 8,260.0 ft

Wellbore DD					
Magnetics	Model Name	Sample Date	Declination	Dip Angle	Field Strength
	IGRF2010	4/19/2012	(°)	(°)	(nT)
			10.34	65.81	52,206

Design Plan #1				
Audit Notes:				
Version:	Phase:	PLAN	Tie On Depth:	0.0
Vertical Section:	Depth From (TVD)	+N/-S	+E/-W	Direction
	(ft)	(ft)	(ft)	(°)
	0.0	0.0	0.0	101.32

Plan Sections										
Measured Depth (ft)	Inclination (°)	Azimuth (°)	Vertical Depth (ft)	+N/-S (ft)	+E/-W (ft)	Dogleg Rate (°/100ft)	Build Rate (°/100ft)	Turn Rate (°/100ft)	TFO (°)	Target
0.0	0.00	0.00	0.0	0.0	0.0	0.00	0.00	0.00	0.00	
200.0	0.00	0.00	200.0	0.0	0.0	0.00	0.00	0.00	0.00	
1,335.3	34.06	101.10	1,269.6	-63.1	321.5	3.00	3.00	0.00	101.10	
7,540.5	34.06	101.10	6,410.4	-732.0	3,731.5	0.00	0.00	0.00	0.00	
8,675.7	0.00	0.00	7,480.0	-795.1	4,053.0	3.00	-3.00	0.00	180.00	UWF10A-03 TGT
10,430.6	0.37	236.43	9,234.9	-798.3	4,048.2	0.02	0.02	-7.04	236.43	
12,323.8	0.37	236.43	11,128.0	-805.1	4,038.0	0.00	0.00	0.00	0.00	UWF10A-03 BHL
13,000.0	0.37	236.43	11,804.2	-807.5	4,034.3	0.00	0.00	0.00	0.00	

Cathedral Energy Services

Planning Report

Database:	USA EDM 5000 Multi Users DB	Local Co-ordinate Reference:	Well UWF10A-03 H04 596
Company:	EnCana Oil & Gas (USA) Inc	TVD Reference:	WELL @ 8293.0ft (Original Well Elev)
Project:	North Piceance	MD Reference:	WELL @ 8293.0ft (Original Well Elev)
Site:	H04 Pad	North Reference:	True
Well:	UWF10A-03 H04 596	Survey Calculation Method:	Minimum Curvature
Wellbore:	DD		
Design:	Plan #1		

Planned Survey

Measured Depth (ft)	Inclination (°)	Azimuth (°)	Vertical Depth (ft)	+N/-S (ft)	+E/-W (ft)	Vertical Section (ft)	Dogleg Rate (°/100ft)	Build Rate (°/100ft)	Comments / Formations
0.0	0.00	0.00	0.0	0.0	0.0	0.0	0.00	0.00	
100.0	0.00	0.00	100.0	0.0	0.0	0.0	0.00	0.00	
200.0	0.00	0.00	200.0	0.0	0.0	0.0	0.00	0.00	KOP @ 200'
300.0	3.00	101.10	300.0	-0.5	2.6	2.6	3.00	3.00	
400.0	6.00	101.10	399.6	-2.0	10.3	10.5	3.00	3.00	
500.0	9.00	101.10	498.8	-4.5	23.1	23.5	3.00	3.00	
600.0	12.00	101.10	597.1	-8.0	41.0	41.7	3.00	3.00	
700.0	15.00	101.10	694.3	-12.5	63.9	65.1	3.00	3.00	
800.0	18.00	101.10	790.2	-18.0	91.7	93.5	3.00	3.00	
900.0	21.00	101.10	884.4	-24.4	124.5	126.9	3.00	3.00	
1,000.0	24.00	101.10	976.8	-31.8	162.0	165.1	3.00	3.00	
1,100.0	27.00	101.10	1,067.1	-40.1	204.3	208.2	3.00	3.00	
1,124.7	27.74	101.10	1,089.0	-42.3	215.4	219.5	3.00	3.00	A GROOVE
1,200.0	30.00	101.10	1,154.9	-49.3	251.1	255.9	3.00	3.00	
1,300.0	33.00	101.10	1,240.2	-59.3	302.4	308.1	3.00	3.00	
1,310.5	33.32	101.10	1,249.0	-60.4	308.0	313.9	3.00	3.00	B GROOVE
1,335.3	34.06	101.10	1,269.6	-63.1	321.5	327.6	3.00	3.00	EOB @ Inc. = 34.06°
1,358.7	34.06	101.10	1,289.0	-65.6	334.3	340.7	0.00	0.00	B GROOVE BASE
1,400.0	34.06	101.10	1,323.2	-70.0	357.0	363.8	0.00	0.00	
1,500.0	34.06	101.10	1,406.1	-80.8	412.0	419.8	0.00	0.00	
1,600.0	34.06	101.10	1,488.9	-91.6	467.0	475.9	0.00	0.00	
1,700.0	34.06	101.10	1,571.8	-102.4	521.9	531.9	0.00	0.00	
1,800.0	34.06	101.10	1,654.6	-113.2	576.9	587.9	0.00	0.00	
1,900.0	34.06	101.10	1,737.4	-123.9	631.8	643.9	0.00	0.00	
2,000.0	34.06	101.10	1,820.3	-134.7	686.8	699.9	0.00	0.00	
2,100.0	34.06	101.10	1,903.1	-145.5	741.7	755.9	0.00	0.00	
2,200.0	34.06	101.10	1,986.0	-156.3	796.7	811.9	0.00	0.00	
2,300.0	34.06	101.10	2,068.8	-167.1	851.6	867.9	0.00	0.00	
2,400.0	34.06	101.10	2,151.7	-177.9	906.6	923.9	0.00	0.00	
2,404.0	34.06	101.10	2,155.0	-178.3	908.8	926.1	0.00	0.00	GARDEN GULCH
2,500.0	34.06	101.10	2,234.5	-188.6	961.5	979.9	0.00	0.00	
2,600.0	34.06	101.10	2,317.4	-199.4	1,016.5	1,035.9	0.00	0.00	
2,700.0	34.06	101.10	2,400.2	-210.2	1,071.5	1,091.9	0.00	0.00	
2,800.0	34.06	101.10	2,483.1	-221.0	1,126.4	1,147.9	0.00	0.00	
2,900.0	34.06	101.10	2,565.9	-231.8	1,181.4	1,203.9	0.00	0.00	
3,000.0	34.06	101.10	2,648.8	-242.5	1,236.3	1,259.9	0.00	0.00	
3,100.0	34.06	101.10	2,731.6	-253.3	1,291.3	1,315.9	0.00	0.00	
3,200.0	34.06	101.10	2,814.5	-264.1	1,346.2	1,371.9	0.00	0.00	
3,300.0	34.06	101.10	2,897.3	-274.9	1,401.2	1,427.9	0.00	0.00	
3,400.0	34.06	101.10	2,980.2	-285.7	1,456.1	1,483.9	0.00	0.00	
3,500.0	34.06	101.10	3,063.0	-296.4	1,511.1	1,539.9	0.00	0.00	
3,600.0	34.06	101.10	3,145.9	-307.2	1,566.1	1,595.9	0.00	0.00	
3,693.1	34.06	101.10	3,223.0	-317.3	1,617.2	1,648.0	0.00	0.00	WASATCH FM
3,700.0	34.06	101.10	3,228.7	-318.0	1,621.0	1,651.9	0.00	0.00	
3,800.0	34.06	101.10	3,311.6	-328.8	1,676.0	1,707.9	0.00	0.00	
3,900.0	34.06	101.10	3,394.4	-339.6	1,730.9	1,763.9	0.00	0.00	
4,000.0	34.06	101.10	3,477.2	-350.3	1,785.9	1,819.9	0.00	0.00	
4,100.0	34.06	101.10	3,560.1	-361.1	1,840.8	1,875.9	0.00	0.00	
4,200.0	34.06	101.10	3,642.9	-371.9	1,895.8	1,931.9	0.00	0.00	
4,300.0	34.06	101.10	3,725.8	-382.7	1,950.7	1,987.9	0.00	0.00	
4,400.0	34.06	101.10	3,808.6	-393.5	2,005.7	2,043.9	0.00	0.00	
4,500.0	34.06	101.10	3,891.5	-404.2	2,060.7	2,099.9	0.00	0.00	

Cathedral Energy Services

Planning Report

Database:	USA EDM 5000 Multi Users DB	Local Co-ordinate Reference:	Well UWF10A-03 H04 596
Company:	EnCana Oil & Gas (USA) Inc	TVD Reference:	WELL @ 8293.0ft (Original Well Elev)
Project:	North Piceance	MD Reference:	WELL @ 8293.0ft (Original Well Elev)
Site:	H04 Pad	North Reference:	True
Well:	UWF10A-03 H04 596	Survey Calculation Method:	Minimum Curvature
Wellbore:	DD		
Design:	Plan #1		

Planned Survey									
Measured Depth (ft)	Inclination (°)	Azimuth (°)	Vertical Depth (ft)	+N/-S (ft)	+E/-W (ft)	Vertical Section (ft)	Dogleg Rate (°/100ft)	Build Rate (°/100ft)	Comments / Formations
4,600.0	34.06	101.10	3,974.3	-415.0	2,115.6	2,155.9	0.00	0.00	
4,700.0	34.06	101.10	4,057.2	-425.8	2,170.6	2,211.9	0.00	0.00	
4,800.0	34.06	101.10	4,140.0	-436.6	2,225.5	2,267.9	0.00	0.00	
4,900.0	34.06	101.10	4,222.9	-447.4	2,280.5	2,323.9	0.00	0.00	
5,000.0	34.06	101.10	4,305.7	-458.2	2,335.4	2,379.9	0.00	0.00	
5,100.0	34.06	101.10	4,388.6	-468.9	2,390.4	2,435.9	0.00	0.00	
5,200.0	34.06	101.10	4,471.4	-479.7	2,445.3	2,491.9	0.00	0.00	
5,300.0	34.06	101.10	4,554.3	-490.5	2,500.3	2,547.9	0.00	0.00	
5,400.0	34.06	101.10	4,637.1	-501.3	2,555.2	2,603.9	0.00	0.00	
5,500.0	34.06	101.10	4,720.0	-512.1	2,610.2	2,659.9	0.00	0.00	
5,600.0	34.06	101.10	4,802.8	-522.8	2,665.2	2,715.9	0.00	0.00	
5,700.0	34.06	101.10	4,885.7	-533.6	2,720.1	2,771.9	0.00	0.00	
5,800.0	34.06	101.10	4,968.5	-544.4	2,775.1	2,827.9	0.00	0.00	
5,900.0	34.06	101.10	5,051.4	-555.2	2,830.0	2,883.9	0.00	0.00	
6,000.0	34.06	101.10	5,134.2	-566.0	2,885.0	2,939.9	0.00	0.00	
6,100.0	34.06	101.10	5,217.0	-576.7	2,939.9	2,995.9	0.00	0.00	
6,200.0	34.06	101.10	5,299.9	-587.5	2,994.9	3,052.0	0.00	0.00	
6,291.9	34.06	101.10	5,376.0	-597.4	3,045.4	3,103.4	0.00	0.00	WASATCH G
6,300.0	34.06	101.10	5,382.7	-598.3	3,049.8	3,108.0	0.00	0.00	
6,400.0	34.06	101.10	5,465.6	-609.1	3,104.8	3,164.0	0.00	0.00	
6,500.0	34.06	101.10	5,548.4	-619.9	3,159.8	3,220.0	0.00	0.00	
6,600.0	34.06	101.10	5,631.3	-630.6	3,214.7	3,276.0	0.00	0.00	
6,700.0	34.06	101.10	5,714.1	-641.4	3,269.7	3,332.0	0.00	0.00	
6,800.0	34.06	101.10	5,797.0	-652.2	3,324.6	3,388.0	0.00	0.00	
6,900.0	34.06	101.10	5,879.8	-663.0	3,379.6	3,444.0	0.00	0.00	
7,000.0	34.06	101.10	5,962.7	-673.8	3,434.5	3,500.0	0.00	0.00	
7,100.0	34.06	101.10	6,045.5	-684.5	3,489.5	3,556.0	0.00	0.00	
7,200.0	34.06	101.10	6,128.4	-695.3	3,544.4	3,612.0	0.00	0.00	
7,300.0	34.06	101.10	6,211.2	-706.1	3,599.4	3,668.0	0.00	0.00	
7,400.0	34.06	101.10	6,294.1	-716.9	3,654.3	3,724.0	0.00	0.00	
7,500.0	34.06	101.10	6,376.9	-727.7	3,709.3	3,780.0	0.00	0.00	
7,540.5	34.06	101.10	6,410.4	-732.0	3,731.5	3,802.6	0.00	0.00	Start 3° Drop
7,600.0	32.27	101.10	6,460.3	-738.3	3,763.5	3,835.2	3.00	-3.00	
7,700.0	29.27	101.10	6,546.2	-748.2	3,813.7	3,886.4	3.00	-3.00	
7,800.0	26.27	101.10	6,634.7	-757.1	3,859.4	3,933.0	3.00	-3.00	
7,900.0	23.27	101.10	6,725.4	-765.2	3,900.5	3,974.8	3.00	-3.00	
8,000.0	20.27	101.10	6,818.3	-772.3	3,936.9	4,011.9	3.00	-3.00	
8,100.0	17.27	101.10	6,913.0	-778.5	3,968.5	4,044.1	3.00	-3.00	
8,200.0	14.27	101.10	7,009.2	-783.7	3,995.2	4,071.3	3.00	-3.00	
8,300.0	11.27	101.10	7,106.7	-788.0	4,016.9	4,093.4	3.00	-3.00	
8,400.0	8.27	101.10	7,205.2	-791.3	4,033.5	4,110.4	3.00	-3.00	
8,500.0	5.27	101.10	7,304.5	-793.5	4,045.1	4,122.1	3.00	-3.00	
8,600.0	2.27	101.10	7,404.3	-794.8	4,051.5	4,128.7	3.00	-3.00	
8,675.7	0.00	0.00	7,480.0	-795.1	4,053.0	4,130.2	3.00	-3.00	EOD @ Inc. = 0° - WILLIAMS FORK
8,700.0	0.01	236.43	7,504.3	-795.1	4,053.0	4,130.2	0.02	0.02	
8,800.0	0.03	236.43	7,604.3	-795.1	4,053.0	4,130.2	0.02	0.02	
8,900.0	0.05	236.43	7,704.3	-795.1	4,052.9	4,130.2	0.02	0.02	
9,000.0	0.07	236.43	7,804.3	-795.2	4,052.8	4,130.1	0.02	0.02	
9,100.0	0.09	236.43	7,904.3	-795.3	4,052.7	4,130.0	0.02	0.02	
9,200.0	0.11	236.43	8,004.3	-795.4	4,052.6	4,129.9	0.02	0.02	
9,300.0	0.13	236.43	8,104.3	-795.5	4,052.4	4,129.7	0.02	0.02	
9,400.0	0.15	236.43	8,204.3	-795.6	4,052.2	4,129.5	0.02	0.02	

Cathedral Energy Services

Planning Report

Database: USA EDM 5000 Multi Users DB
Company: EnCana Oil & Gas (USA) Inc
Project: North Piceance
Site: H04 Pad
Well: UWF10A-03 H04 596
Wellbore: DD
Design: Plan #1

Local Co-ordinate Reference: Well UWF10A-03 H04 596
TVD Reference: WELL @ 8293.0ft (Original Well Elev)
MD Reference: WELL @ 8293.0ft (Original Well Elev)
North Reference: True
Survey Calculation Method: Minimum Curvature

Planned Survey

Measured Depth (ft)	Inclination (°)	Azimuth (°)	Vertical Depth (ft)	+N/-S (ft)	+E/-W (ft)	Vertical Section (ft)	Dogleg Rate (°/100ft)	Build Rate (°/100ft)	Comments / Formations
9,500.0	0.18	236.43	8,304.3	-795.8	4,051.9	4,129.3	0.02	0.02	
9,600.0	0.20	236.43	8,404.3	-796.0	4,051.7	4,129.1	0.02	0.02	
9,700.0	0.22	236.43	8,504.3	-796.2	4,051.4	4,128.8	0.02	0.02	
9,800.0	0.24	236.43	8,604.3	-796.4	4,051.0	4,128.6	0.02	0.02	
9,900.0	0.26	236.43	8,704.3	-796.6	4,050.7	4,128.3	0.02	0.02	
10,000.0	0.28	236.43	8,804.3	-796.9	4,050.3	4,127.9	0.02	0.02	
10,100.0	0.30	236.43	8,904.3	-797.2	4,049.9	4,127.6	0.02	0.02	
10,200.0	0.32	236.43	9,004.3	-797.5	4,049.4	4,127.2	0.02	0.02	
10,300.0	0.35	236.43	9,104.3	-797.8	4,048.9	4,126.8	0.02	0.02	
10,400.0	0.37	236.43	9,204.3	-798.1	4,048.4	4,126.3	0.02	0.02	
10,430.6	0.37	236.43	9,234.9	-798.3	4,048.2	4,126.2	0.02	0.02	
10,500.0	0.37	236.43	9,304.3	-798.5	4,047.9	4,125.9	0.00	0.00	
10,600.0	0.37	236.43	9,404.3	-798.9	4,047.3	4,125.4	0.00	0.00	
10,700.0	0.37	236.43	9,504.3	-799.2	4,046.8	4,124.9	0.00	0.00	
10,800.0	0.37	236.43	9,604.3	-799.6	4,046.2	4,124.5	0.00	0.00	
10,900.0	0.37	236.43	9,704.3	-799.9	4,045.7	4,124.0	0.00	0.00	
11,000.0	0.37	236.43	9,804.3	-800.3	4,045.1	4,123.5	0.00	0.00	
11,100.0	0.37	236.43	9,904.3	-800.7	4,044.6	4,123.1	0.00	0.00	
11,200.0	0.37	236.43	10,004.3	-801.0	4,044.1	4,122.6	0.00	0.00	
11,300.0	0.37	236.43	10,104.3	-801.4	4,043.5	4,122.2	0.00	0.00	
11,400.0	0.37	236.43	10,204.3	-801.7	4,043.0	4,121.7	0.00	0.00	
11,500.0	0.37	236.43	10,304.3	-802.1	4,042.4	4,121.2	0.00	0.00	
11,600.0	0.37	236.43	10,404.3	-802.5	4,041.9	4,120.8	0.00	0.00	
11,700.0	0.37	236.43	10,504.2	-802.8	4,041.3	4,120.3	0.00	0.00	
11,800.0	0.37	236.43	10,604.2	-803.2	4,040.8	4,119.8	0.00	0.00	
11,900.0	0.37	236.43	10,704.2	-803.6	4,040.3	4,119.4	0.00	0.00	
12,000.0	0.37	236.43	10,804.2	-803.9	4,039.7	4,118.9	0.00	0.00	
12,100.0	0.37	236.43	10,904.2	-804.3	4,039.2	4,118.5	0.00	0.00	
12,200.0	0.37	236.43	11,004.2	-804.6	4,038.6	4,118.0	0.00	0.00	
12,300.0	0.37	236.43	11,104.2	-805.0	4,038.1	4,117.5	0.00	0.00	
12,323.8	0.37	236.43	11,128.0	-805.1	4,038.0	4,117.4	0.00	0.00	TD @ 12,323.8' MD - ROLLINS
12,400.0	0.37	236.43	11,204.2	-805.4	4,037.5	4,117.1	0.00	0.00	
12,500.0	0.37	236.43	11,304.2	-805.7	4,037.0	4,116.6	0.00	0.00	
12,570.8	0.37	236.43	11,375.0	-806.0	4,036.6	4,116.3	0.00	0.00	COZZETTE
12,600.0	0.37	236.43	11,404.2	-806.1	4,036.5	4,116.2	0.00	0.00	
12,700.0	0.37	236.43	11,504.2	-806.4	4,035.9	4,115.7	0.00	0.00	
12,748.8	0.37	236.43	11,553.0	-806.6	4,035.6	4,115.5	0.00	0.00	CORCORAN
12,800.0	0.37	236.43	11,604.2	-806.8	4,035.4	4,115.2	0.00	0.00	
12,900.0	0.37	236.43	11,704.2	-807.2	4,034.8	4,114.8	0.00	0.00	
13,000.0	0.37	236.43	11,804.2	-807.5	4,034.3	4,114.3	0.00	0.00	Permit TD @ 13,000' MD

Cathedral Energy Services

Planning Report

Database: USA EDM 5000 Multi Users DB	Local Co-ordinate Reference: Well UWF10A-03 H04 596
Company: EnCana Oil & Gas (USA) Inc	TVD Reference: WELL @ 8293.0ft (Original Well Elev)
Project: North Piceance	MD Reference: WELL @ 8293.0ft (Original Well Elev)
Site: H04 Pad	North Reference: True
Well: UWF10A-03 H04 596	Survey Calculation Method: Minimum Curvature
Wellbore: DD	
Design: Plan #1	

Targets									
Target Name	Dip Angle	Dip Dir.	TVD	+N/-S	+E/-W	Northing	Easting	Latitude	Longitude
- hit/miss target	(°)	(°)	(ft)	(ft)	(ft)	(ft)	(ft)		
- Shape									
UWF10A-03 TGT - plan hits target center - Point	0.00	0.00	7,480.0	-795.1	4,053.0	1,670,250.18	2,253,675.37	39° 38' 37.44 N	108° 9' 2.22 W
UWF10A-03 BHL - plan hits target center - Point	0.00	0.00	11,128.0	-805.1	4,038.0	1,670,240.64	2,253,660.04	39° 38' 37.34 N	108° 9' 2.41 W

Formations						
Measured Depth	Vertical Depth	Name	Lithology	Dip	Dip Direction	
(ft)	(ft)			(°)	(°)	
1,124.7	1,089.0	A GROOVE				
1,310.5	1,249.0	B GROOVE				
1,358.7	1,289.0	B GROOVE BASE				
2,404.0	2,155.0	GARDEN GULCH				
3,693.1	3,223.0	WASATCH FM				
6,291.9	5,376.0	WASATCH G				
8,675.7	7,480.0	WILLIAMS FORK				
12,323.8	11,128.0	ROLLINS				
12,570.8	11,375.0	COZZETTE				
12,748.8	11,553.0	CORCORAN				

Plan Annotations					
Measured Depth	Vertical Depth	Local Coordinates		Comment	
(ft)	(ft)	+N/-S	+E/-W		
		(ft)	(ft)		
200.0	200.0	0.0	0.0	KOP @ 200'	
1,335.3	1,269.6	-63.1	321.5	EOB @ Inc. = 34.06°	
7,540.5	6,410.4	-732.0	3,731.5	Start 3° Drop	
8,675.7	7,480.0	-795.1	4,053.0	EOD @ Inc. = 0°	
12,323.8	11,128.0	-805.1	4,038.0	TD @ 12,323.8' MD	
13,000.0	11,804.2	-807.5	4,034.3	Permit TD @ 13,000' MD	