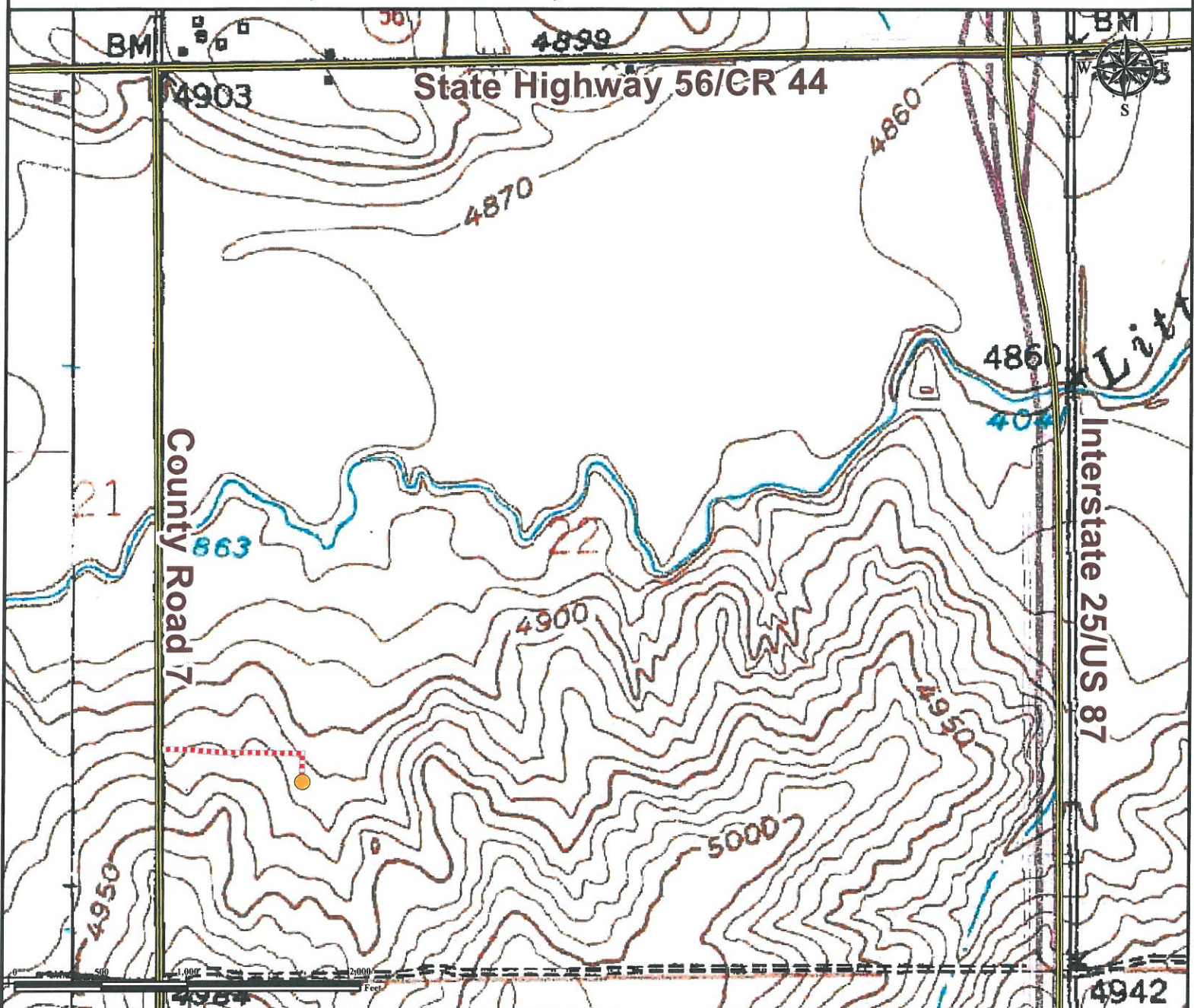


Access Road Map

HFE 24-22

SW¼ SW¼ SECTION 22, TOWNSHIP 4 NORTH, RANGE 68 WEST OF THE 6TH PRINCIPAL MERIDIAN



From Johnstown, CO: From the intersection of US Interstate 25 and State Highway 60, Drive South on I-25 and proceed for ±1.8 miles.
Turn Right on Exit 250 towards State Highway 56 and proceed for ±0.2 miles.
Turn Right onto Highway 56/ County Road 44 and drive West for ±0.9 miles.
Turn Left onto County Road 7 and proceed for 0.8 miles.
Turn Left onto proposed access road and follow it East for ±0.19 miles.
Total distance from Johnstown, CO to proposed well pad location is ±3.89 miles.

Legend

● Proposed Well Pad - - - - Proposed Access Road

Reference Location

** All Measurements are Made from Reference Well HFE 24-22 **

Lat: 40.294695° Long: -104.995731° (NAD83)
Elevation: 4920 Feet

Use our resources to find yours!
www.petro-fs.com
(303) 928-7128

Field Date: 03/28/2012
Drafting Date: 04/19/2012
Drafter: DLR
Checked By: BHF

Data Sources:
- TOPO courtesy of USGS

Prepared for:

